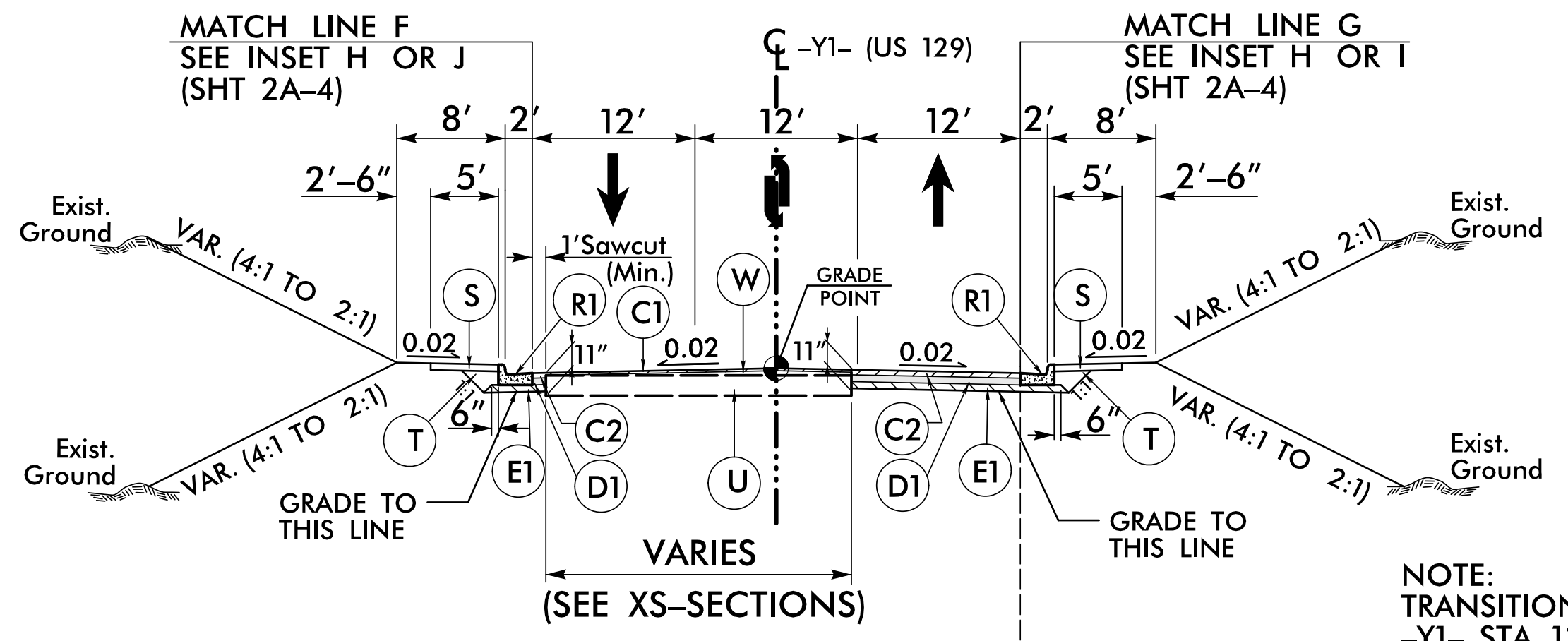


6/2/2022

PAVEMENT SCHEDULE			
C1	1.5" S9.5C	R1	2'-6" C&G
C2	3" S9.5C	S	SIDEWALK
D1	4" I19.0C	T	EARTH MATERIAL
D2	2 1/2" I19.0C	U	EXISTING PAVEMENT
E1	4" B25.0C	W	WEDGING
J1	6" ABC		

PAVEMENT EDGE SLOPES ARE 1:1 UNLESS SHOWN OTHERWISE. SEE SHEET 2A-1 FOR DETAILED PAVEMENT SCHEDULE.



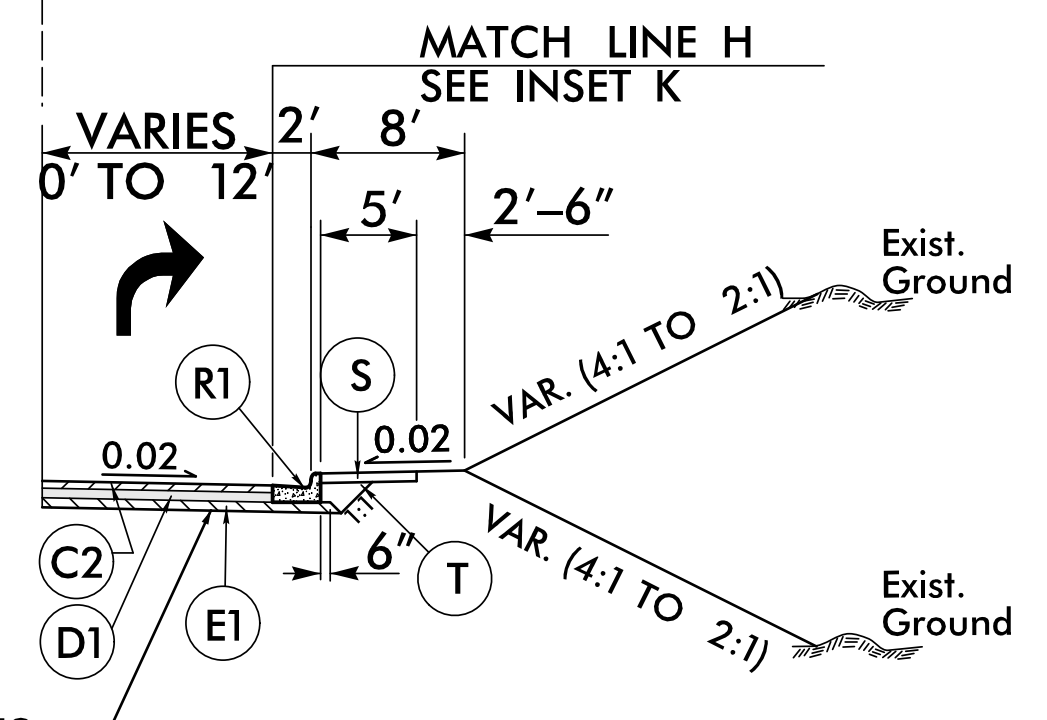
TYPICAL SECTION NO. 6

USE TYPICAL SECTION NO. 6
-Y1- STA. 14+70.00 TO -Y1- STA. 35+70.00

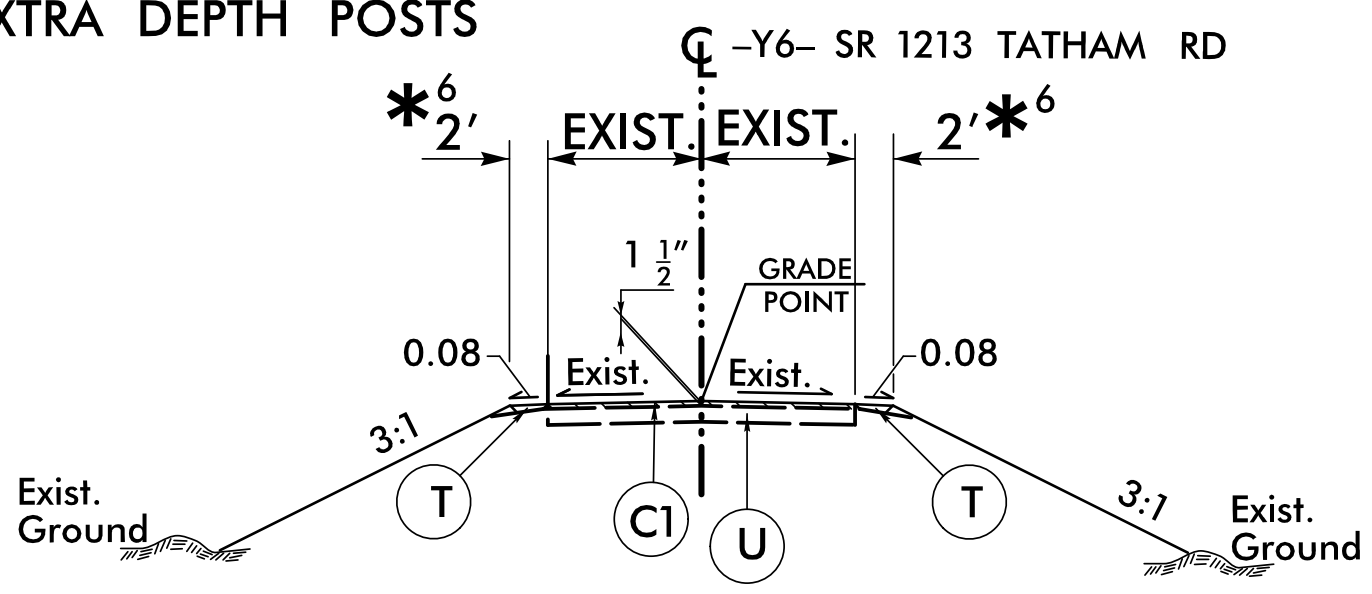
NOTE:
TRANSITION BETWEEN EXISTING AND TYP. SECT. NO 6 AS FOLLOWS:
-Y1- STA. 13+70.00 TO -Y1- STA. 14+70.00
-Y1- STA. 35+70.00 TO -Y1- STA. 36+70.00
NOTE:
SEE PLANS FOR SIDEWALK LOCATION.

PART SECTION NO. 6A

USE PART SECTION NO. 6A
-Y1- STA. 32+50.00 TO -Y1- STA. 35+76.33,RT

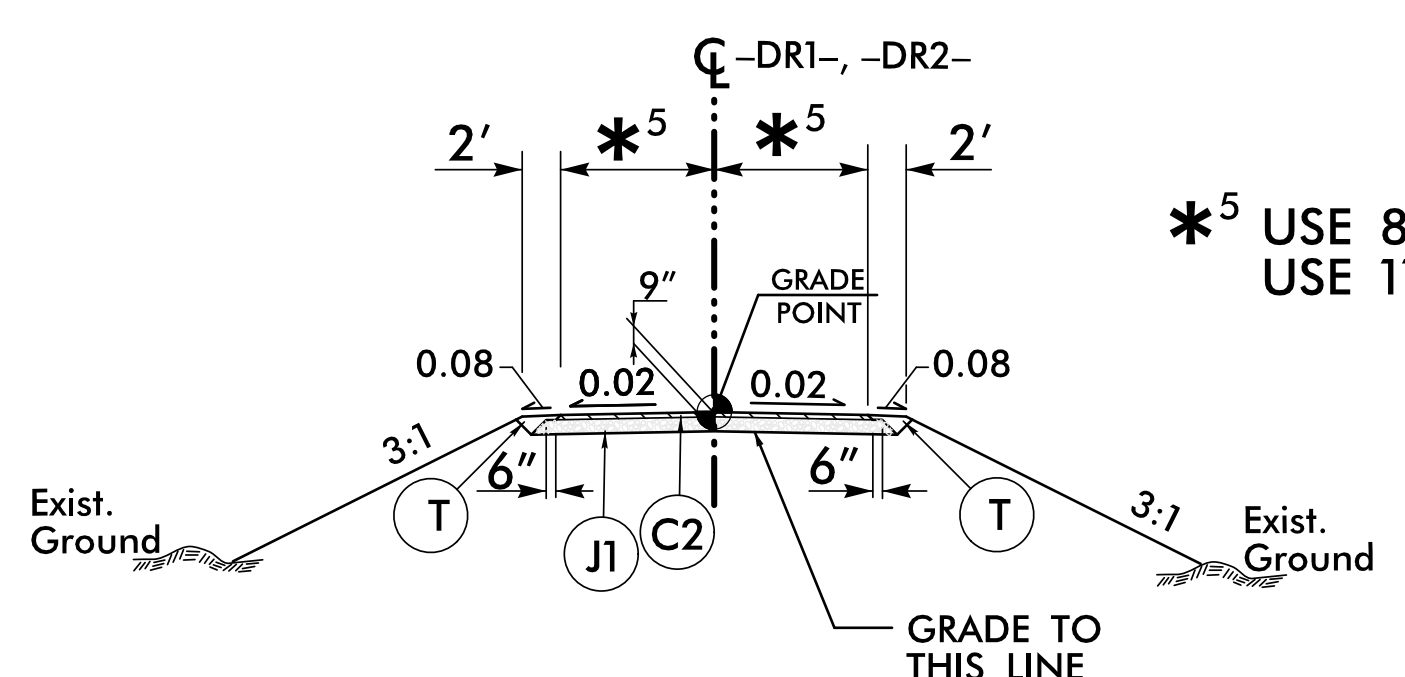


*6 FOR GUARDRAIL WIDEN 3'MIN BEHIND THE FACE OF GUARDRAIL OR USE EXTRA DEPTH POSTS



TYPICAL SECTION NO. 7

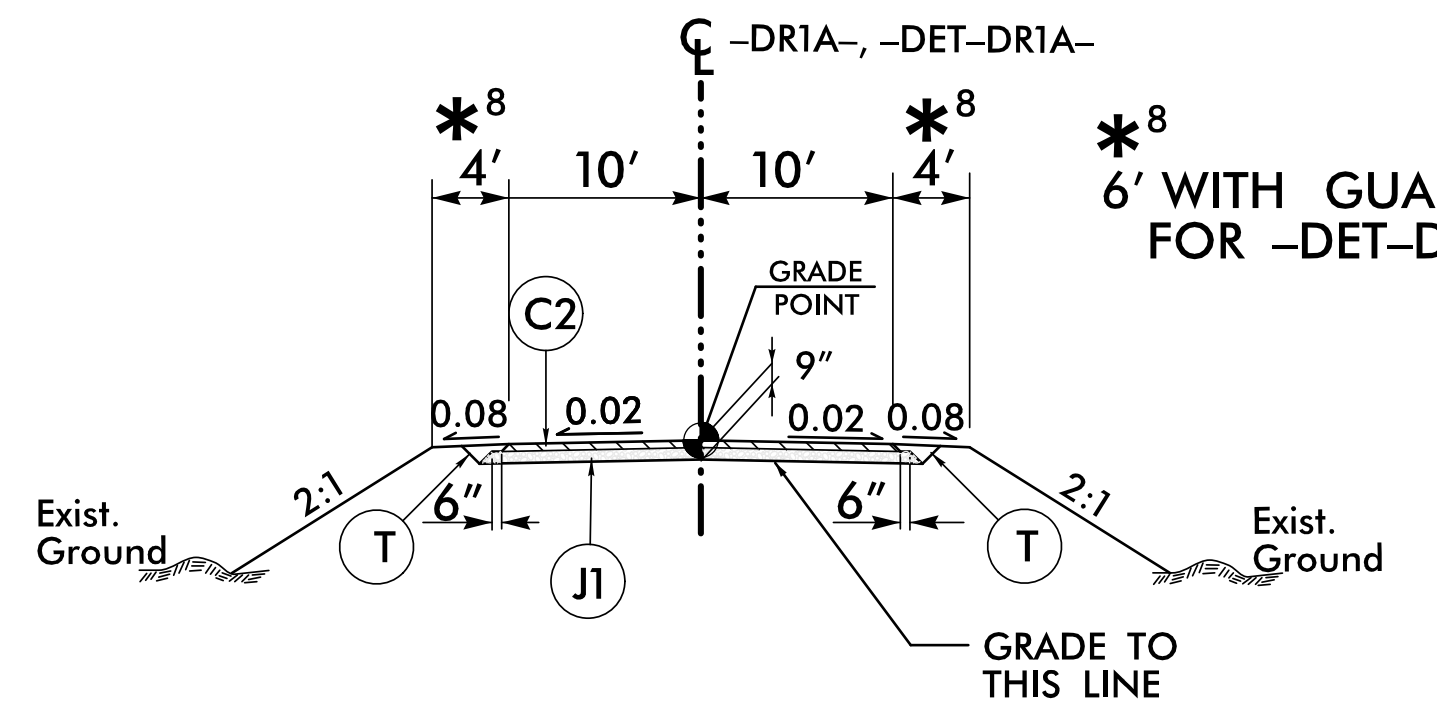
USE TYPICAL SECTION NO. 7
-Y6- STA. 11+05.00 TO -Y6- STA. 12+85.70



TYPICAL SECTION NO. 8

USE TYPICAL SECTION NO. 8
-DR1- STA. 10+20.00 TO -DR1- STA. 11+71.39
-DR2- STA. 10+26.60 TO -DR2- STA. 11+60.00

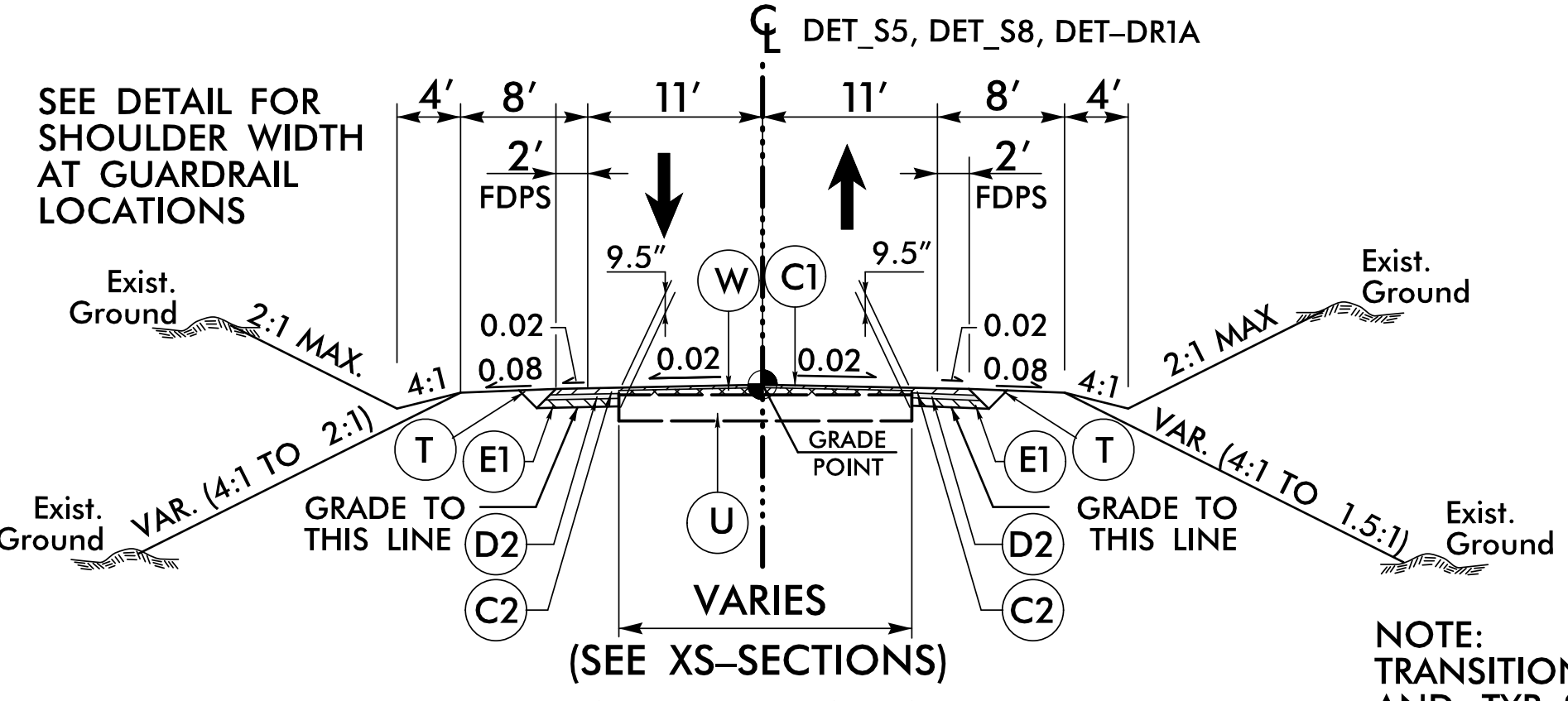
*5 USE 8' FOR -DR1-
USE 11' FOR -DR2-



TYPICAL SECTION NO. 9

USE TYPICAL SECTION NO. 9
-DR1A- STA. 10+05.00 TO -DR1A- STA. 11+07.00
-DET-DR1A- STA. 10+00.00 TO -DET-DR1A- STA. 14+00.15

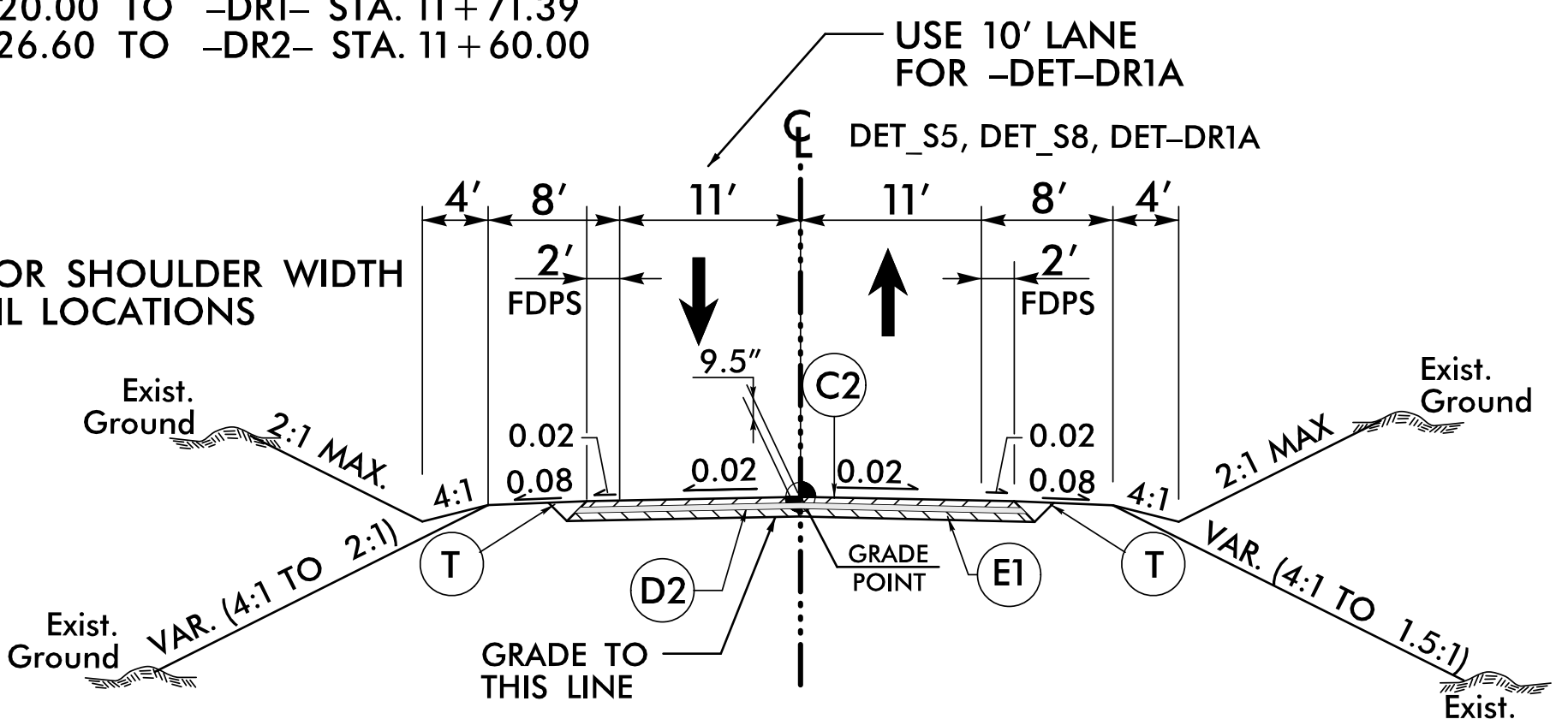
*8 6' WITH GUARDRAIL FOR -DET-DR1A-



TYPICAL SECTION NO. 10

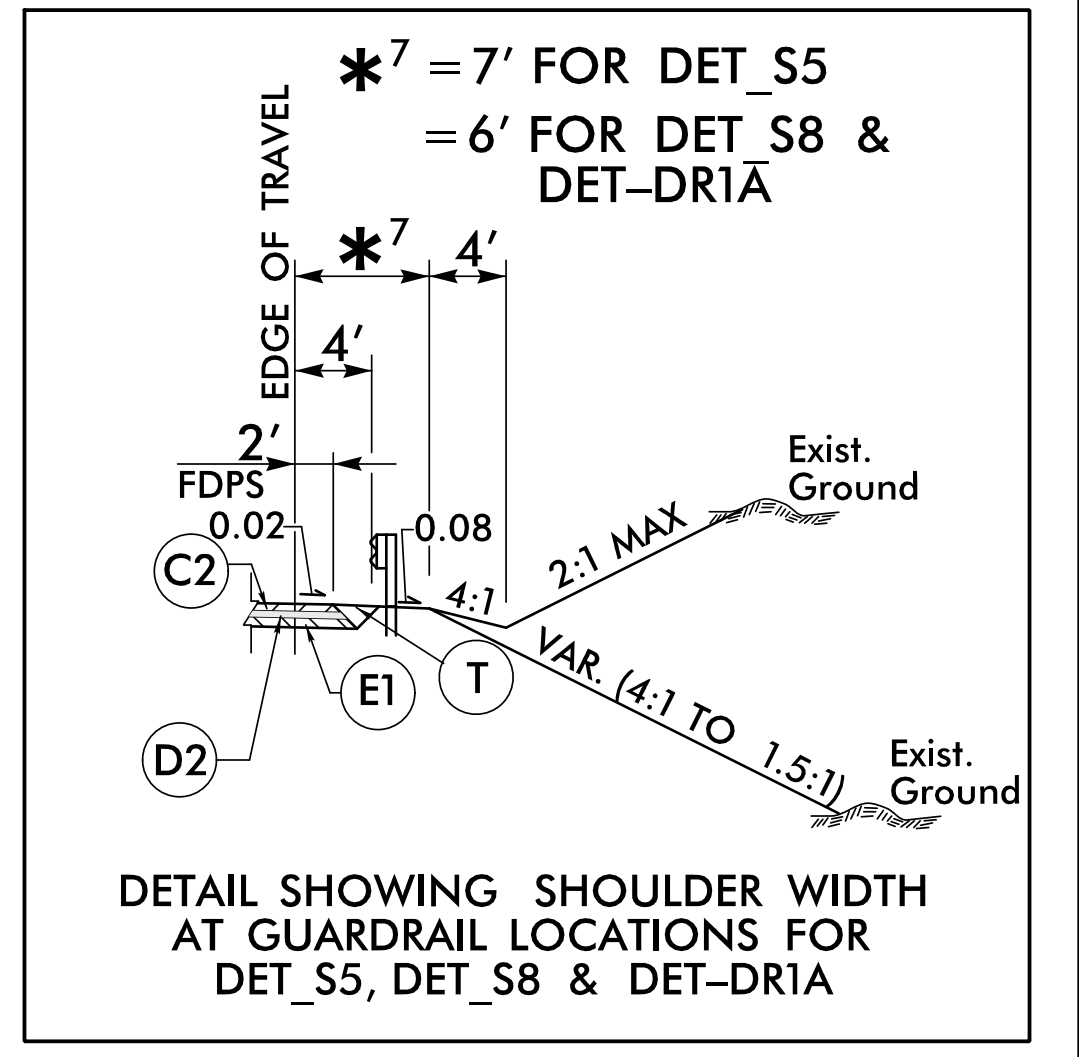
USE TYPICAL SECTION NO. 10
DET_S5 STA. 11+00.00 TO DET_S5 STA. 13+40.66
DET_S5 STA. 20+30.45 TO DET_S5 STA. 22+33.00
DET_S8 STA. 11+00.00 TO DET_S8 STA. 12+99.64
DET_S8 STA. 19+23.61 TO DET_S8 STA. 21+25.00

NOTE:
TRANSITION BETWEEN EXISTING AND TYP. SECT. NO 10 AS FOLLOWS:
DET_S5 STA. 10.00.00 TO DET_S5 STA. 11+00.00
DET_S5 STA. 22+33.00 TO DET_S5 STA. 23+33.00
DET_S8 STA. 10.00.00 TO DET_S8 STA. 11+00.00
DET_S8 STA. 21+25.00 TO DET_S8 STA. 22+25.00



TYPICAL SECTION NO. 11

USE TYPICAL SECTION NO. 11
DET_S5 STA. 13+40.66 TO DET_S5 STA. 20+30.45
DET_S8 STA. 12+99.64 TO DET_S8 STA. 19+23.61



DETAIL SHOWING SHOULDER WIDTH AT GUARDRAIL LOCATIONS FOR DET_S5, DET_S8 & DET-DR1A

S:\K0007\VA-00099\Roadway\Proj\VA-00099CA_Plan_Sheets\VA-00099CA_Rldg_tjy.dgn