

PHASING DIAGRAM

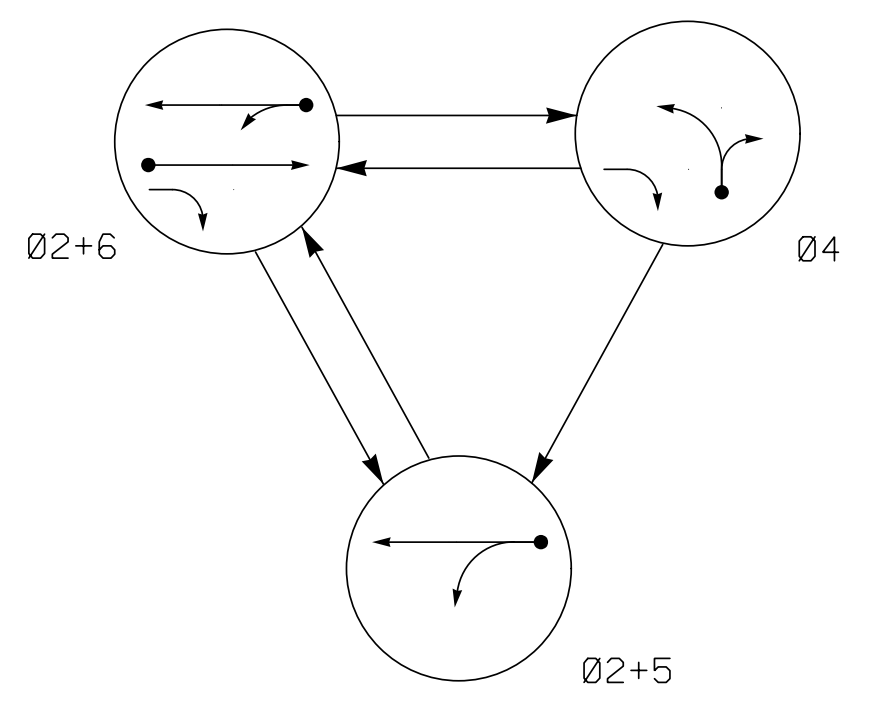


TABLE OF OPERATION

SIGNAL FACE	PHASE			
	02+5	02+6	04	FLASH
21	G	G	R	Y
22	G	G	R	Y
41, 42	R	R	G	R
61	R	G	R	Y
62	R	G	R	Y

DETECTOR INSTALLATION CHART

LOOP	DETECTOR				PROGRAMMING							
	SIZE (FT)	DISTANCE FROM STOPBAR (FT)	TURNS	NEW LOOP	PHASE	CALLING	EXTEND TIME	DELAY TIME	USE ADDED INITIAL	TYPE	SYSTEM LOOP	NEW CARD
2A	6X6	300	EXIST	-	2	Yes	-	-	-	N	-	X
4A	6X60	+5	2-4-2	-	4	Yes	-	-	-	N	-	X
4B	6X30	+5	2-4-2	-	4	Yes	-	15	-	N	-	X
5A	6X40	+5	2-4-2	-	5	Yes	-	5	-	N	-	X
6A	6X6	300	EXIST	-	6	Yes	-	-	X	N	-	X
S1	6X6	+150	6	X	-	No	-	-	-	N	X	X
S2	6X6	+200	6	X	-	No	-	-	-	N	X	X

3 Phase Fully Actuated Gastonia Signal System

NOTES

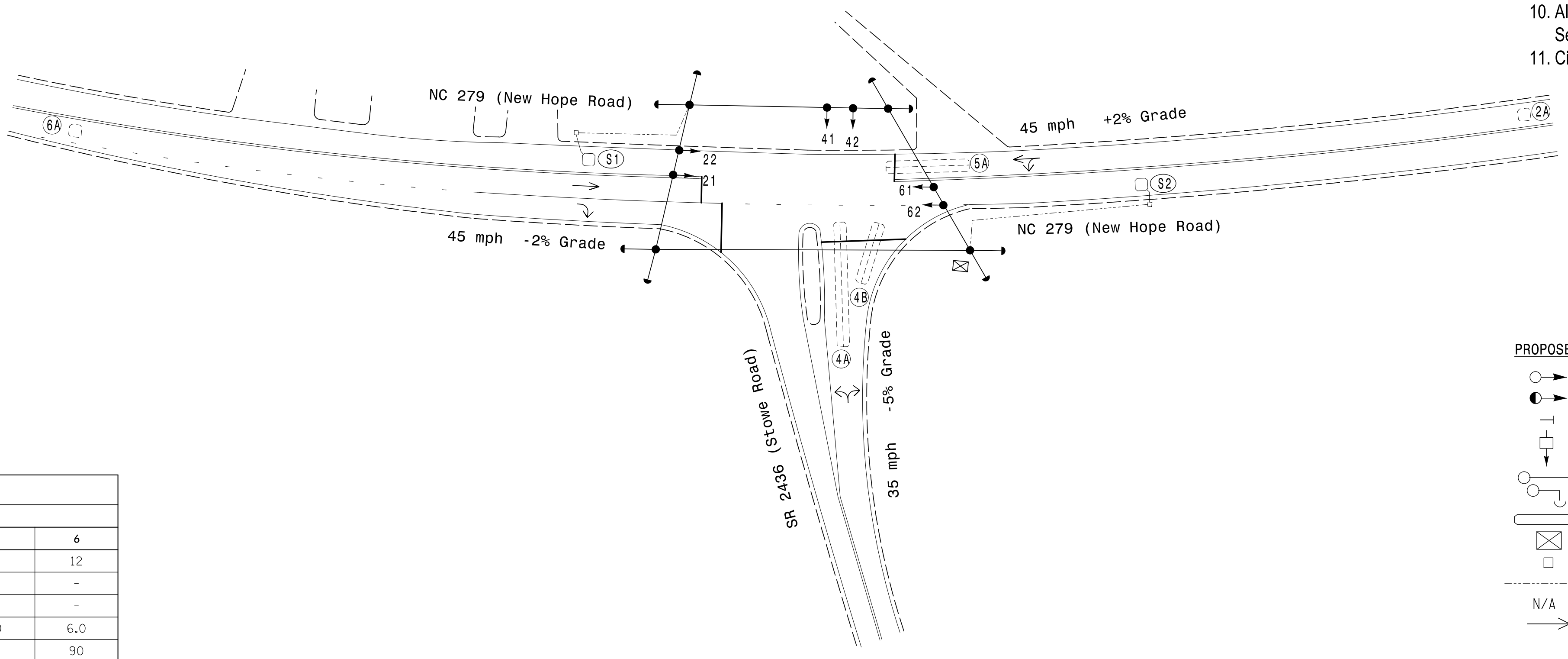
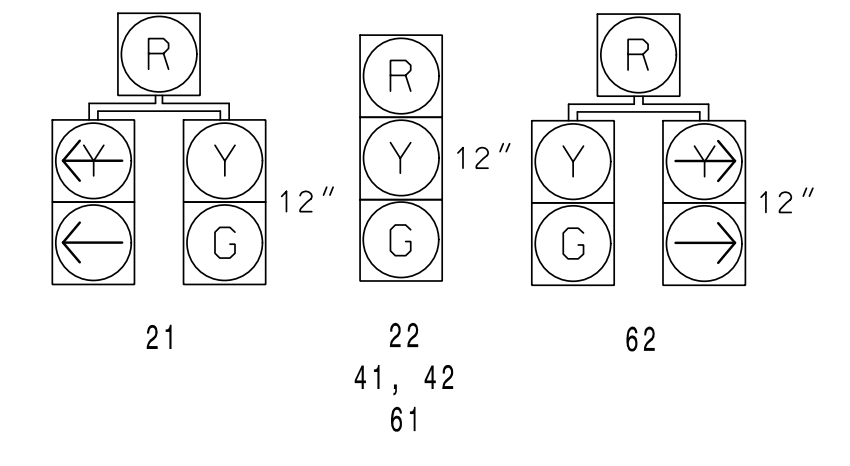
1. Refer to "Roadway Standard Drawings NCDOT" dated January 2018 and "Standard Specifications for Roads and Structures" dated January 2018.
2. Do not program signal for late night flashing operation unless otherwise directed by the Engineer.
3. Phase 5 may be lagged.
4. Set all detector units to presence mode.
5. In the event of loop replacement, refer to the current ITS and Signal Design Manual and submit a Plan of Record to the Signal Design Section.
6. Locate new cabinet so as not to obstruct sight distance of vehicles turning right on red.
7. Pavement markings are existing.
8. Maximum times shown in timing chart are for free-run operation only. Coordinated signal system timing values shall supersede these values.
9. Install new cabinet on the existing cabinet foundation.
10. All new cabinets and base extenders shall be black in color. See Project Special Provisions for details.
11. City of system data: Controller Asset #1718.

PHASING DIAGRAM DETECTION LEGEND

- DETECTED MOVEMENT
- UNDETECTED MOVEMENT (OVERLAP)
- UNSIGNALIZED MOVEMENT
- PEDESTRIAN MOVEMENT

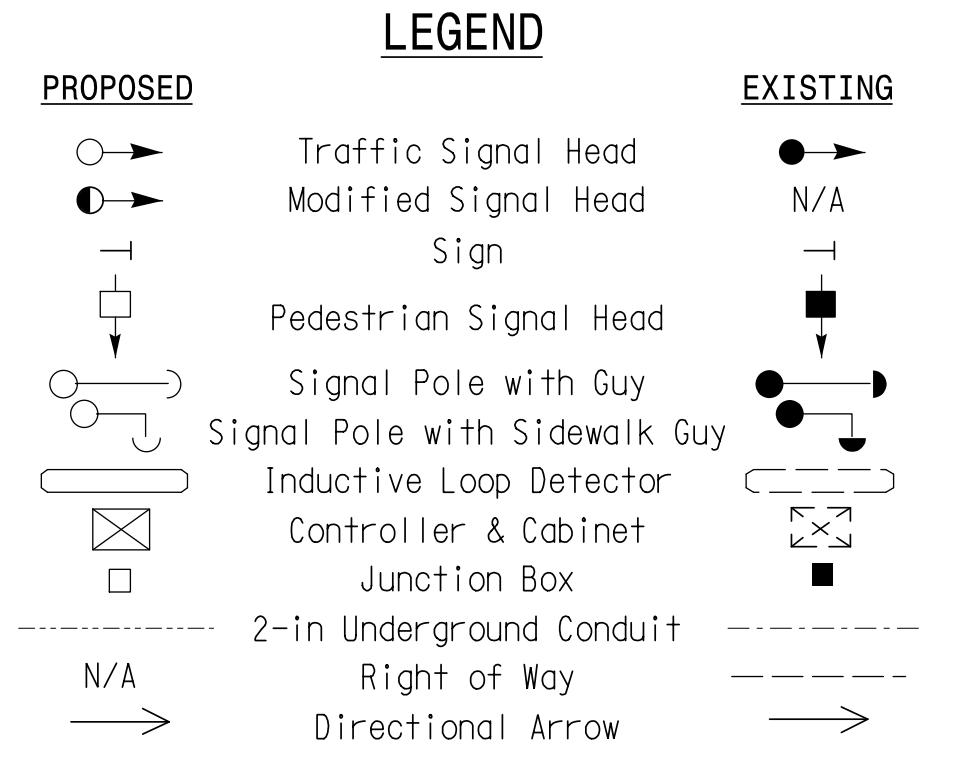
SIGNAL FACE I.D.

All Heads L.E.D.



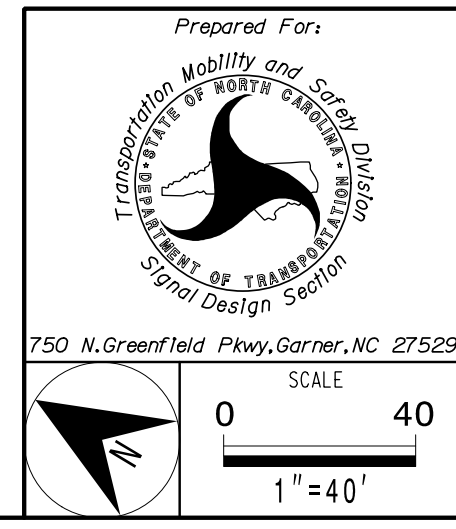
FEATURE	PHASE			
	2	4	5	6
Min Green *	12	7	7	12
Walk *	-	-	-	-
Ped Clear	-	-	-	-
Veh. Extension *	6.0	1.0	1.0	6.0
Max I *	90	20	25	90
Yellow	4.7	3.1	3.0	4.7
Red Clear	1.4	2.6	2.1	1.4
Red Revert	2.0	2.0	2.0	2.0
Actuations B4 Add *	-	-	-	-
Seconds / Actuation *	-	-	-	2.5
Max Initial *	-	-	-	34
Time Before Reduction *	15	-	-	15
Time To Reduce *	40	-	-	40
Minimum Gap	3.0	-	-	3.0
Locking Detector	-	-	-	X
Recall Position	MIN RECALL	-	-	MIN RECALL
Dual Entry	-	-	-	-
Simultaneous Gap	X	X	X	X

* These values may be field adjusted. Do not adjust Min Green and Extension times for phases 2 and 6 lower than what is shown. Min Green for all other phases should not be lower than 4 seconds.



Signal Upgrade

PLANS PREPARED IN THE OFFICE OF:
Kimley-Horn
 NC License #0102
 421 Fayetteville Street, Suite 600
 Raleigh, NC 27601
 (919) 677-2000



Prepared For:		Division 12		Gaston County		Gastonia	
NC 279 (New Hope Road) at SR 2436 (Stowe Road)		PLAN DATE: May 2021		REVIEWED BY: SL Phillips		REVIEWED BY: KP Baumann	
PREPARED BY: DM Curri		REVISIONS		INIT.		DATE	

DOCUMENT NOT CONSIDERED FINAL UNLESS ALL SIGNATURES COMPLETED

DocuSigned by:
 Kevin P. Baumann
 3/11/2022
 DATE
 SIGNATURE
 SIG. INVENTORY NO. 12-1718

3/9/2022 11:15:06 AM Daniel B. Curri ***K:\meyer-horn.com\SE-RAL\MRAL_TPIDK_LTS\011036569_Gastonia Signal System\Signal\KWS4 - Signal Design\0121718-2021.dgn