

PHASING DIAGRAM

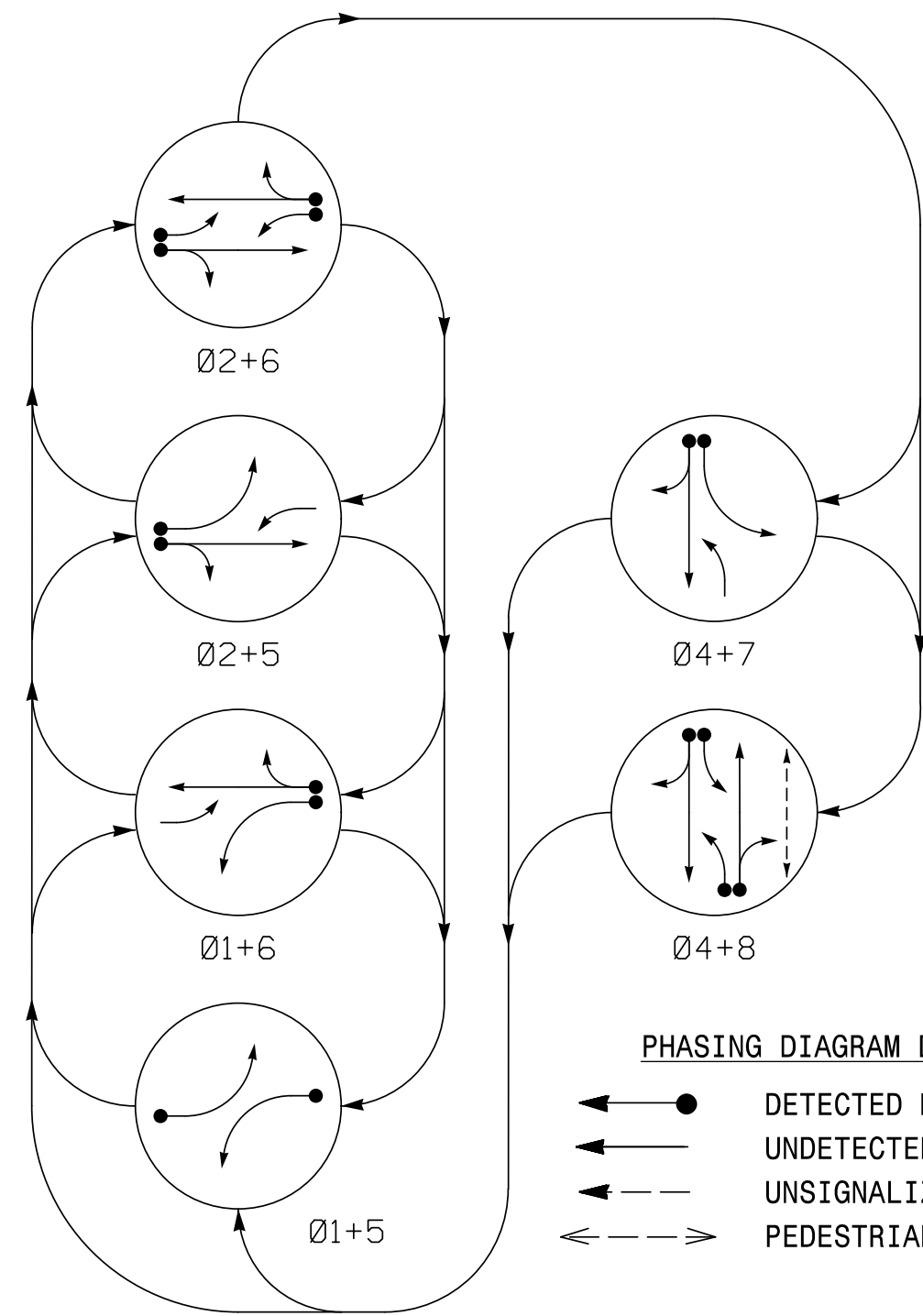
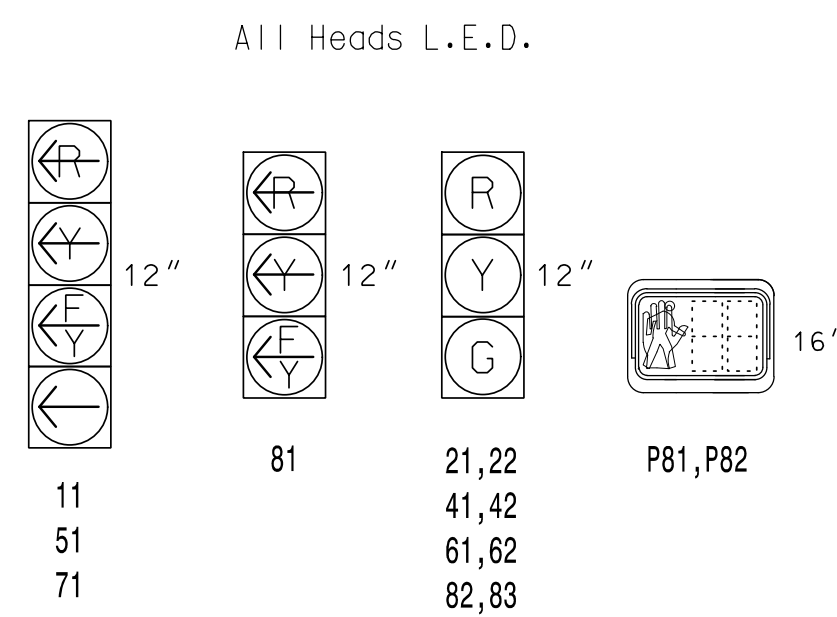


TABLE OF OPERATION

SIGNAL FACE	PHASE							
	Ø 1+5	Ø 2+5	Ø 2+6	Ø 4+7	Ø 4+8	F L	H S	D R
11	←	←	←	←	←	←	←	←
21,22	R	R	G	G	R	R	Y	
41,42	R	R	R	R	G	G	R	
51	←	←	←	←	←	←	←	←
61,62	R	G	R	G	R	R	Y	
71	←	←	←	←	←	←	←	←
81	←	←	←	←	←	←	←	←
82,83	R	R	R	R	R	G	R	
P81,P82	DW	DW	DW	DW	DW	W	DRK	

SIGNAL FACE I.D.



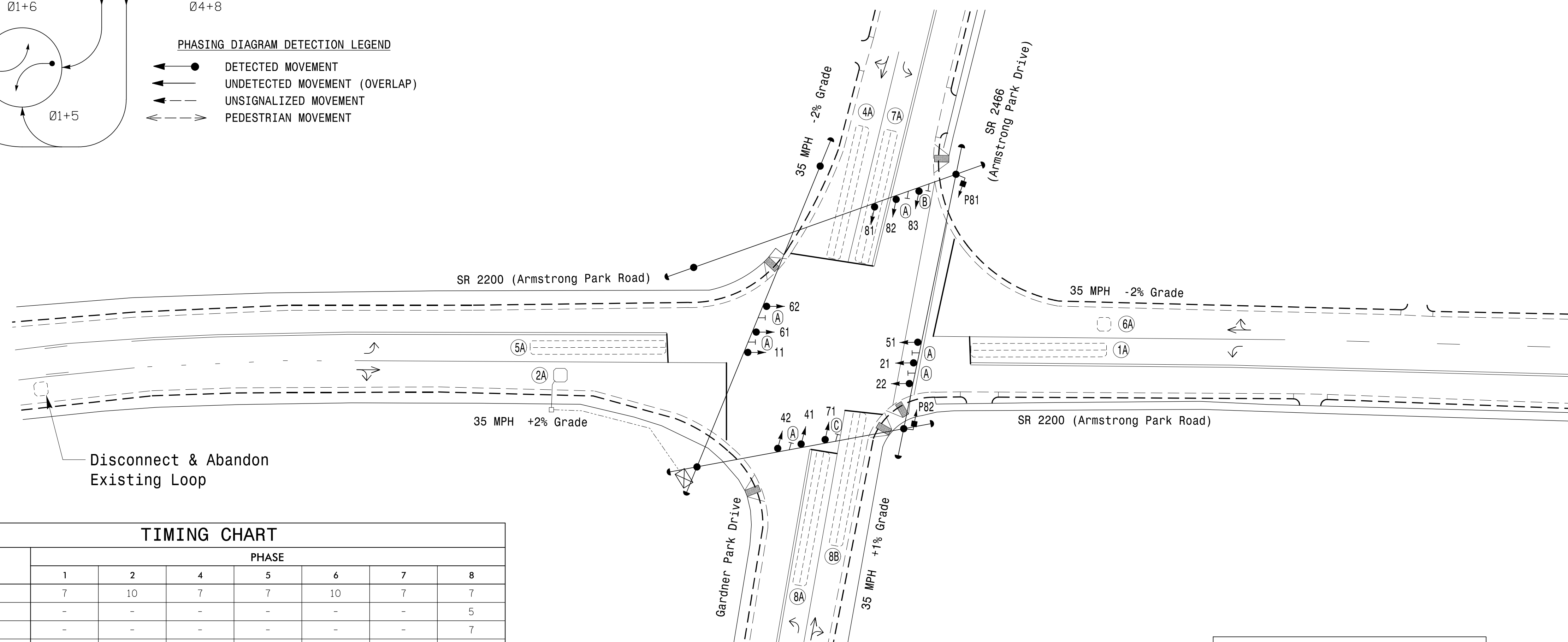
DETECTOR INSTALLATION CHART

LOOP	SIZE (FT)	DISTANCE FROM STOPBAR (FT)	TURNS	PROGRAMMING								
				NEW LOOP	PHASE	CALLING	EXTEND TIME	DELAY TIME	USE ADDED INITIAL	TYPE	LOOP NEW CARD	
1A	6X60	0	2-4-2	-	1	Yes	-	15	-	N	-	X
					6	Yes	-	-	-	N	-	X
2A	6X6	70	6	X	2	Yes	-	-	-	N	-	X
4A	6X60	0	2-4-2	-	4	Yes	-	10	-	N	-	X
5A	6X60	0	2-4-2	-	5	Yes	-	15	-	N	-	X
					2	Yes	-	3	-	G	-	X
6A	6X6	70	EXIST	-	6	Yes	-	-	-	N	-	X
7A	6X60	0	2-4-2	-	7	Yes	-	15	-	N	-	X
					4	Yes	-	3	-	N	-	X
8A	6X60	0	2-4-2	-	8	Yes	-	3	-	N	-	X
8B	6X60	0	2-4-2	-	8	Yes	-	10	-	N	-	X

6 Phase Fully Actuated Gastonia Signal System

NOTES

- Refer to "Roadway Standard Drawings NCDOT" dated January 2018 and "Standard Specifications for Roads and Structures" dated January 2018.
- Do not program signal for late night flashing operation unless otherwise directed by the Engineer.
- Phase 1 and/or phase 5 may be lagged.
- Phase 7 may be lagged.
- Set all detector units to presence mode.
- In the event of loop replacement, refer to the current ITS and Signal Design Manual and submit a Plan of Record to the Signal Design Section.
- Locate new cabinet so as not to obstruct sight distance of vehicles turning right on red.
- Omit "WALK" and flashing "DON'T WALK" with no pedestrian calls.
- Program pedestrian heads to countdown the flashing "Don't Walk" time only.
- Pavement markings are existing.
- Maximum times shown in timing chart are for free-run operation only. Coordinated signal system timing values shall supersede these values.
- Disconnect and abandon existing loop 2A and re-cut new loop as shown on plan.
- Install new cabinet on the existing cabinet foundation.
- All new cabinets and base extenders shall be black in color. See Project Special Provisions for details.
- City system data:
Controller Asset #0609.



TIMING CHART

FEATURE	PHASE							
	1	2	4	5	6	7	8	
Min Green *	7	10	7	7	10	7	7	
Delayed Green	-	-	-	-	-	-	5	
Walk *	-	-	-	-	-	-	7	
Ped Clear	-	-	-	-	-	-	24	
Veh. Extension *	2.0	3.0	2.0	2.0	3.0	2.0	2.0	
Max 1 *	15	90	45	15	90	25	45	
Yellow	3.0	4.0	4.0	3.0	4.0	3.0	4.0	
Red Clear	2.4	2.4	1.8	3.1	2.4	1.9	1.8	
Red Revert	2.0	2.0	2.0	2.0	2.0	2.0	2.0	
Actions B4 Add *	-	-	-	-	-	-	-	
Seconds / Actuation *	-	-	-	-	-	-	-	
Max Initial *	-	-	-	-	-	-	-	
Time Before Reduction *	-	-	-	-	-	-	-	
Time To Reduce *	-	-	-	-	-	-	-	
Minimum Gap	-	-	-	-	-	-	-	
Locking Detector	-	X	-	-	X	-	-	
Recall Position	-	MIN RECALL	-	-	MIN RECALL	-	-	
Dual Entry	-	-	X	-	-	-	X	
Simultaneous Gap	X	X	X	X	X	X	X	

* These values may be field adjusted. Do not adjust Min Green and Extension times for phases 2 and 6 lower than what is shown. Min Green for all other phases should not be lower than 4 seconds.

This plan supersedes the plan signed and sealed on 5/23/2022

LEGEND

PROPOSED	EXISTING

Signal Upgrade

SR 2200 (Armstrong Park Road) at SR 2466 (Armstrong Park Drive) / Gardner Park Drive

Division 12 Gaston County Gastonia

PLAN DATE: May 2021 REVIEWED BY: SL Phillips

PREPARED BY: CF Davis REVIEWED BY: KP Baumann

REVISIONS: _____

INIT. DATE

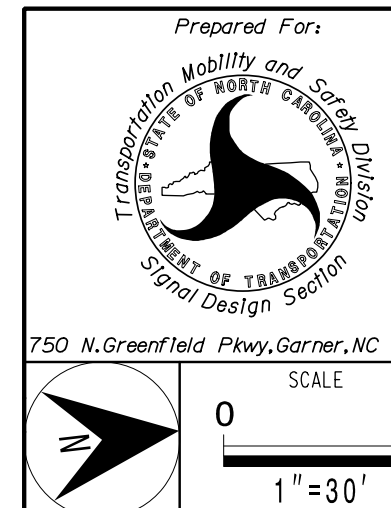
DOCUMENT NOT CONSIDERED FINAL UNLESS ALL SIGNATURES COMPLETED

Seal of K. P. Baumann, Professional Engineer, No. 044434

Discussed by: _____ DATE: 6/22/2022

SIG. INVENTORY NO. 12-0609

PLANS PREPARED IN THE OFFICE OF:
Kimley-Horn
NC License #0102
421 Fayetteville Street, Suite 600
Raleigh, NC 27601
(919) 677-2000



6/22/2022 4:22:23 PM Dantellb.Curr1 ***Kimley-Horn.comSE-RAL\MRAL\TIP\DK-TIS\011036569_Gastonia Signal System9_Signal\SW54 - Signal Design\G120609-2021.dgn