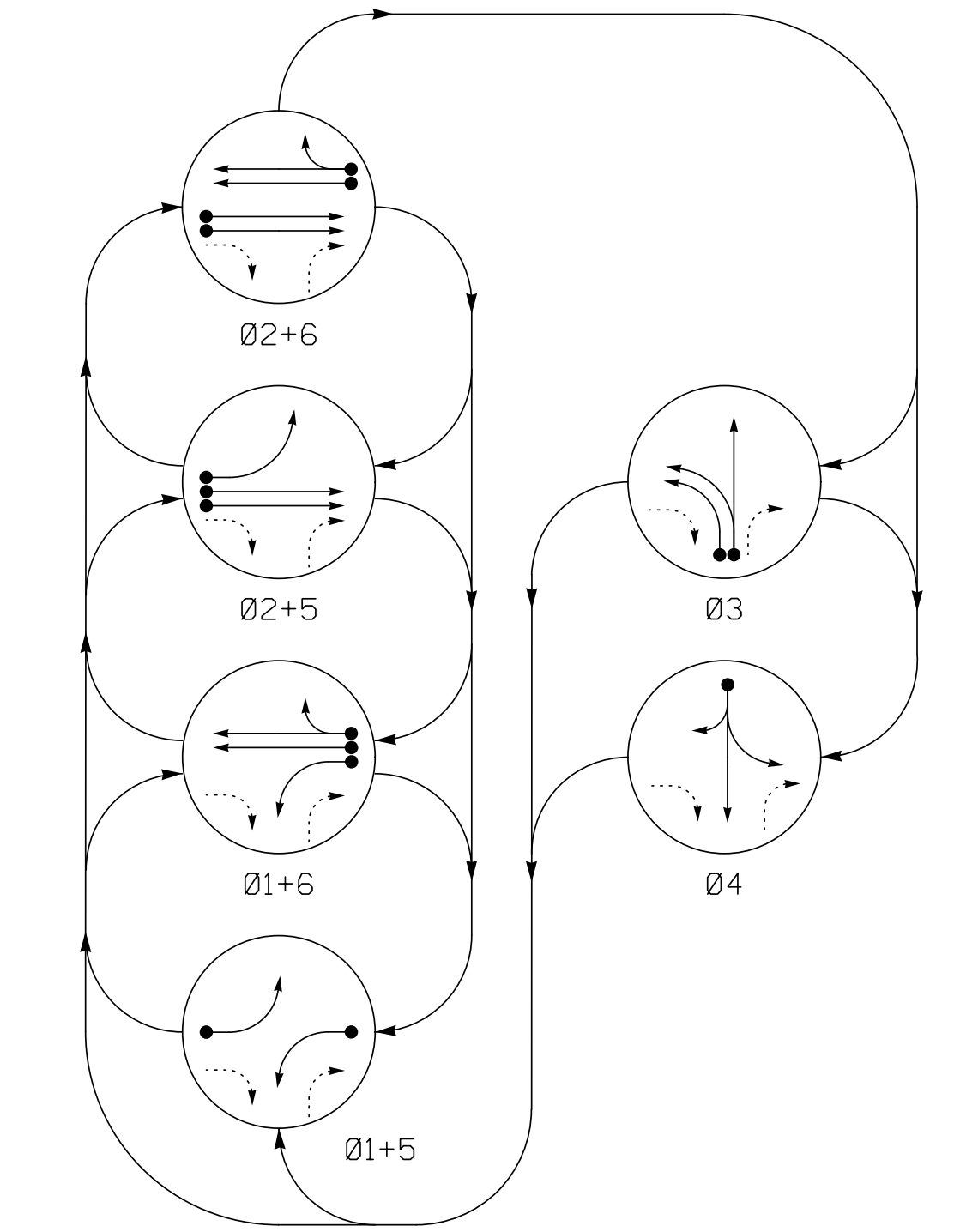


PHASING DIAGRAM

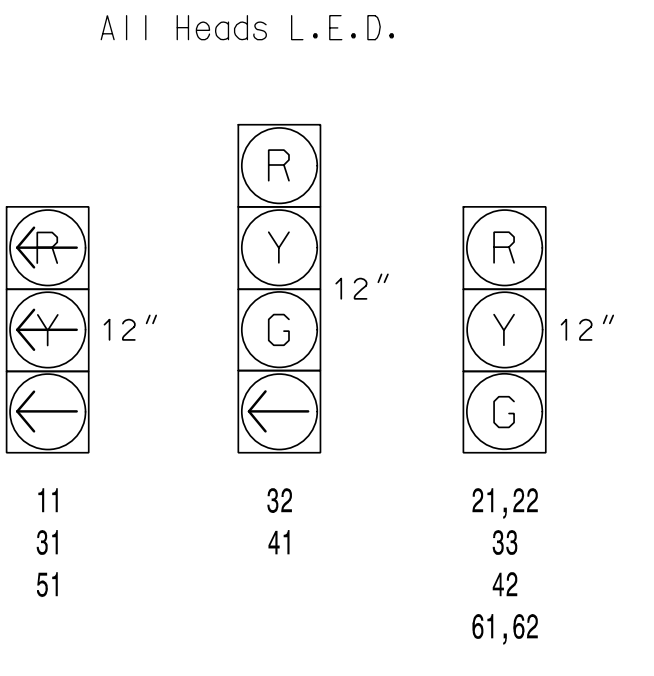


PHASING DIAGRAM DETECTION LEGEND
DETECTED MOVEMENT
UNDETECTED MOVEMENT (OVERLAP)
UNSIGNALIZED MOVEMENT
PEDESTRIAN MOVEMENT

TABLE OF OPERATION

Table with columns: SIGNAL FACE, PHASE (Ø1+5, Ø1+6, Ø2+5, Ø2+6, Ø3, Ø4, H/O/D/L/T), and rows for signal faces 11, 21,22, 31, 32, 33, 41, 42, 51, 61,62.

SIGNAL FACE I.D.



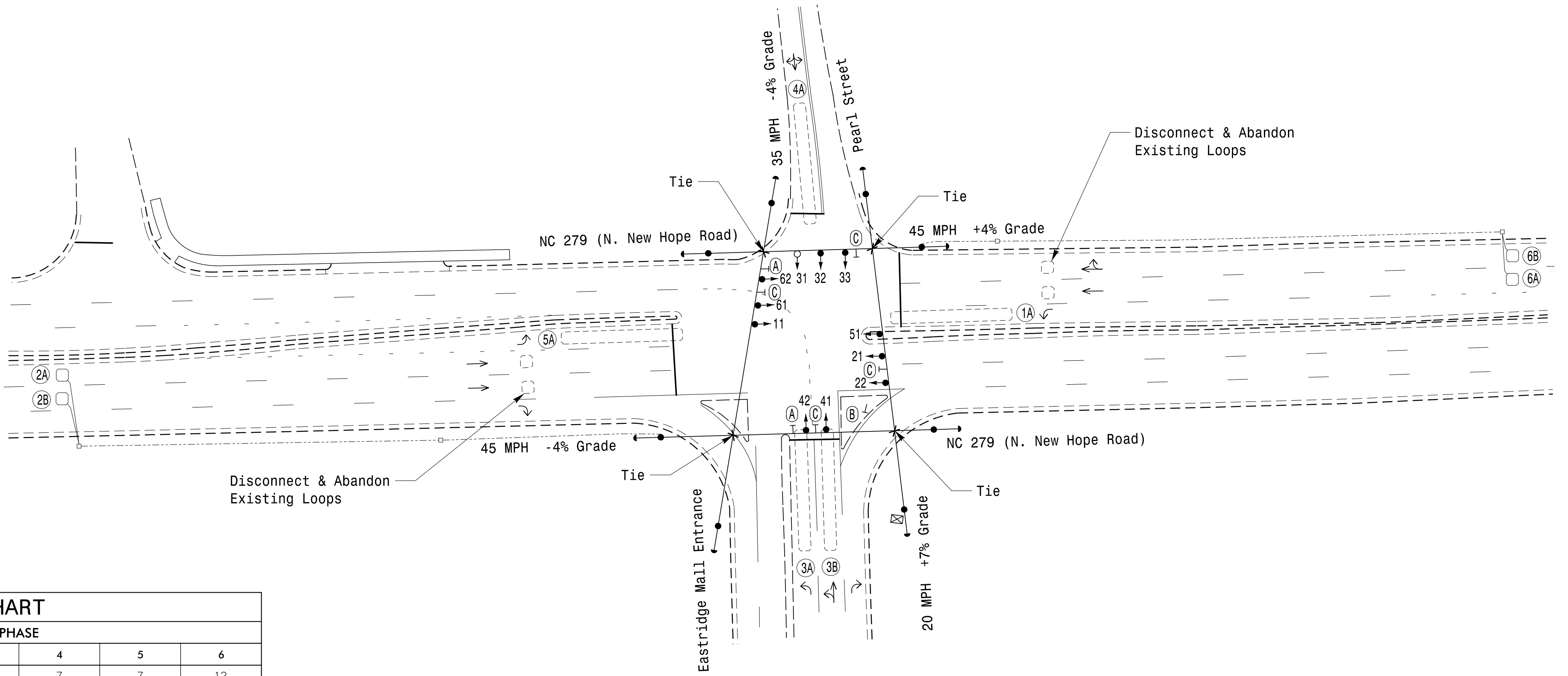
DETECTOR INSTALLATION CHART

Table with columns: LOOP, SIZE (FT), DISTANCE FROM STOPBAR (FT), TURNS, NEW LOOP, PHASE, CALLING, EXTEND TIME, DELAY TIME, USE ADDED INITIAL, TYPE, SYSTEM LOOP, NEW CARD.

6 Phase Fully Actuated Gastonia Signal System

NOTES

- 1. Refer to "Roadway Standard Drawings NCDOT" dated January 2018 and "Standard Specifications for Roads and Structures" dated January 2018.
2. Do not program signal for late night flashing operation unless otherwise directed by the Engineer.
3. Phase 1 and/or phase 5 may be lagged.
4. The order of phase 3 and phase 4 may be reversed.
5. Reposition existing signal heads numbered 32 & 33.
6. Set all detector units to presence mode.
7. In the event of loop replacement, refer to the current ITS and Signal Design Manual and submit a Plan of Record to the Signal Design Section.
8. Locate new cabinet so as not to obstruct sight distance of vehicles turning right on red.
9. Remove existing Left Arrow "ONLY" sign-(R3-5L) and existing Combined Through and Left Arrow sign-(R3-6L).
10. Pavement markings are existing.
11. Maximum times shown in timing chart are for free-run operation only. Coordinated signal system timing values shall supersede these values.
12. Install new cabinet on the existing cabinet foundation.
13. Disconnect and abandon existing loops 2A, 2B, 6A, & 6B and re-cut new loops as shown on plan.
14. Existing signal heads 31 & 32 have been relabeled to 32 & 33, respectively.
15. All new cabinets and base extenders shall be black in color. See Project Special Provisions for details.
16. Reconnect lead-in cable to separate loops 2A, 2B, 6A & 6B, as shown.
17. City of system data: Controller Asset #0176.

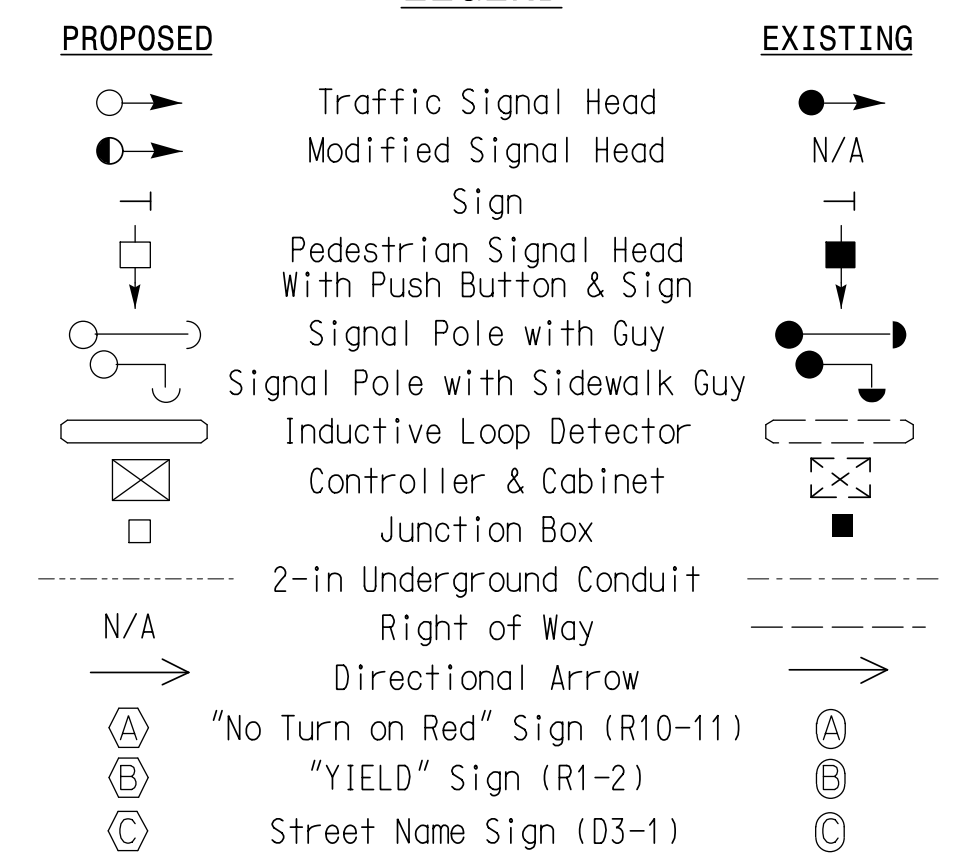


TIMING CHART

Timing chart table with columns: FEATURE, PHASE (1-6), and rows for Min Green, Walk, Ped Clear, Veh. Extension, Max 1, Yellow, Red Clear, Red Revert, Actuations B4 Add, Seconds / Actuation, Max Initial, Time Before Reduction, Time To Reduce, Minimum Gap, Locking Detector, Recall Position, Dual Entry, Simultaneous Gap.

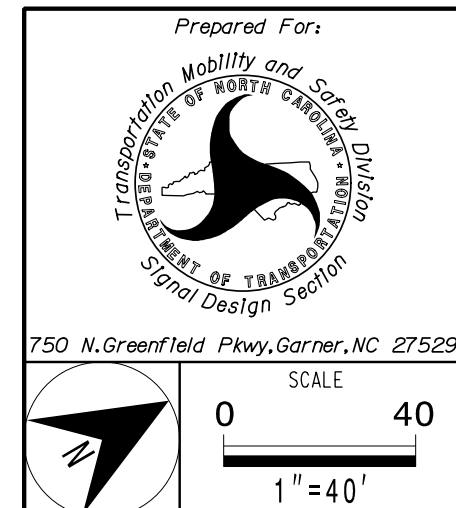
* These values may be field adjusted. Do not adjust Min Green and Extension times for phases 2 and 6 lower than what is shown. Min Green for all other phases should not be lower than 4 seconds.

LEGEND



Signal Upgrade

PLANS PREPARED IN THE OFFICE OF: Kimley-Horn
NC License #0102
421 Fayetteville Street, Suite 600
Raleigh, NC 27601
(919) 677-2000



Project information block including: NC 279 (N. New Hope Road) at Pearl Street and Eastridge Mall Entrance, Division 12 Gaston County Gastonia, Plan Date: May 2021, Reviewed By: SL Phillips, Prepared By: CF Davis, Reviewed By: KP Baumann.

Document control block including: DOCUMENT NOT CONSIDERED FINAL UNLESS ALL SIGNATURES COMPLETED, Date: 3/11/2022, Signature: Kevin P. Baumann, Sig. Inventory No. 12-0176.

11:16:52 AM Dantellb.Cur1 ***Kinley-Horn.comSE_RAL\MRAL_TIPDK-LTS\011036569_Gastonia Signal System9_Signal_Sig.60.0.dgn 3/9/2022