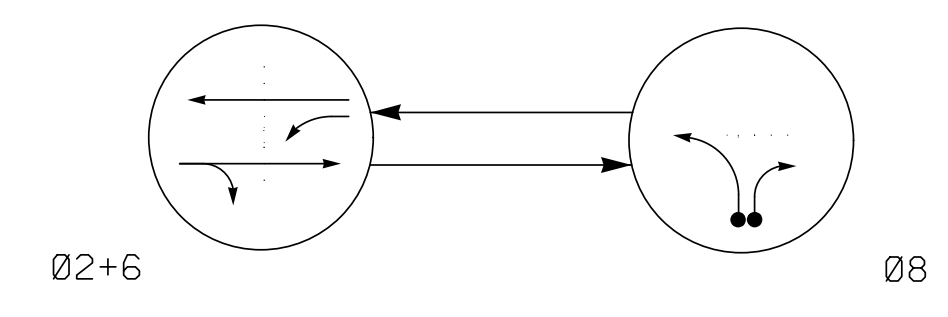


PHASING DIAGRAM



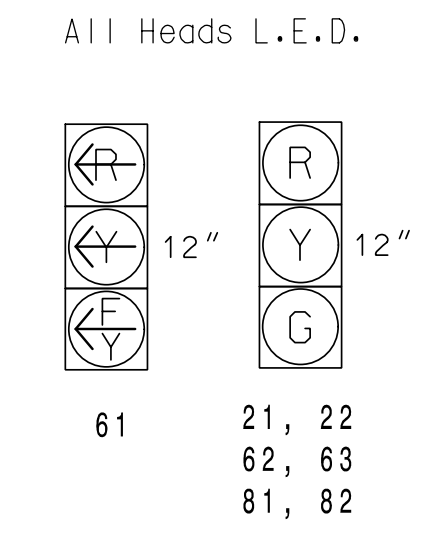
PHASING DIAGRAM DETECTION LEGEND

- ◄● DETECTED MOVEMENT
- ◄ UNDETECTED MOVEMENT (OVERLAP)
- ◄- UN SIGNALIZED MOVEMENT
- ◄- - PEDESTRIAN MOVEMENT

TABLE OF OPERATION

SIGNAL FACE	PHASE		
	Ø2+6	Ø8	FLASH
21, 22	G	R	Y
61	Y	Y	Y
62, 63	G	R	Y
81, 82	R	G	R

SIGNAL FACE I.D.



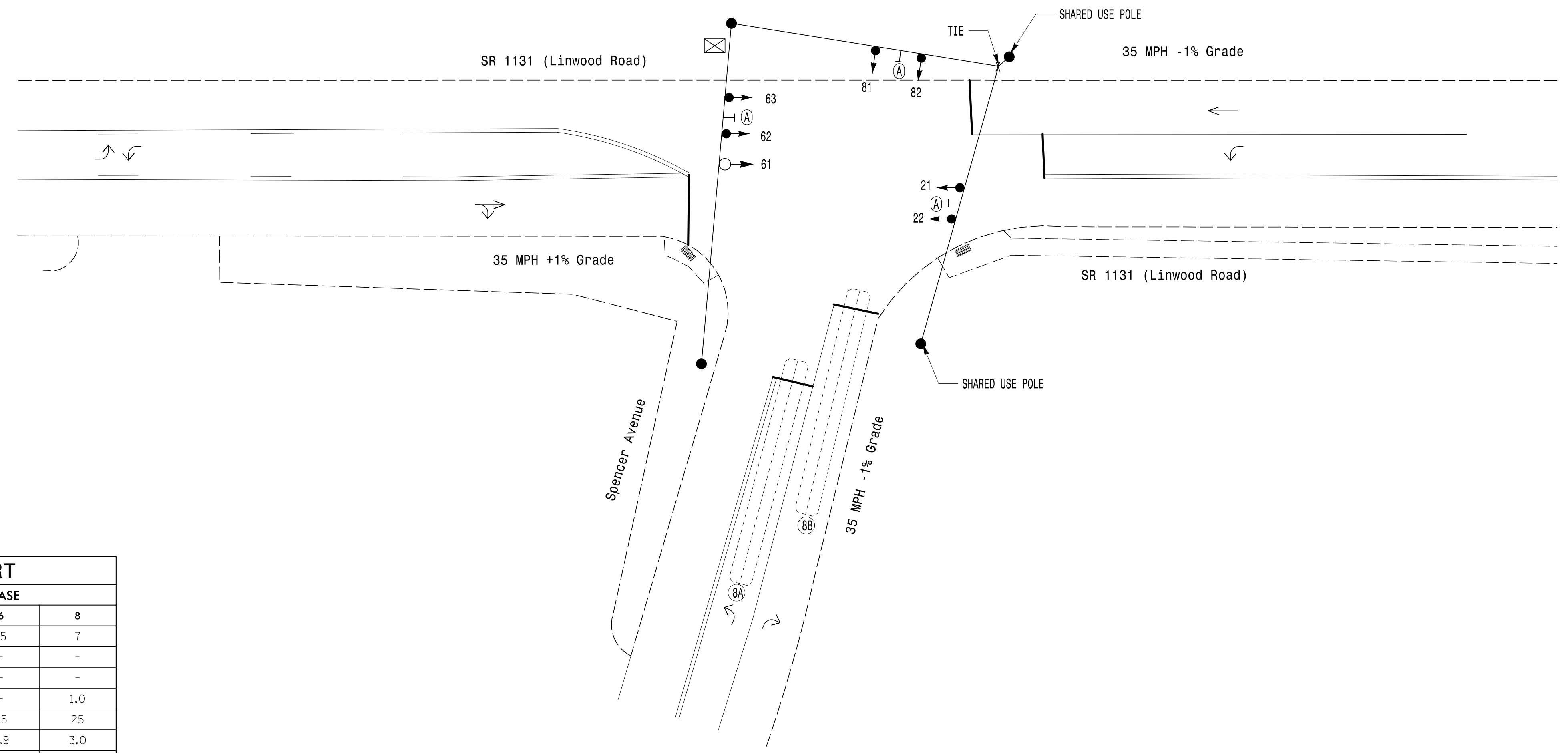
DETECTOR INSTALLATION CHART

LOOP	SIZE (FT)	DISTANCE FROM STOPBAR (FT)	TURNS	NEW LOOP	PROGRAMMING							
					PHASE	CALLING	EXTEND TIME	DELAY TIME	USE ADDED INITIAL	TYPE	SYSTEM LOOP	NEW CARD
8A	6X60	+5	2-4-2	-	8	Yes	-	-	-	N	-	X
8B	6X60	+5	2-4-2	-	8	Yes	-	10	-	N	-	X

2 Phase Semi-Actuated Gastonia Signal System

NOTES

- Refer to "Roadway Standard Drawings NCDOT" dated January 2018 and "Standard Specifications for Roads and Structures" dated January 2018.
- Do not program signal for late night flashing operation unless otherwise directed by the Engineer.
- Set all detector units to presence mode.
- In the event of loop replacement, refer to the current ITS and Signal Design Manual and submit a Plan of Record to the Signal Design Section.
- Locate new cabinet so as not to obstruct sight distance of vehicles turning right on red.
- Existing phase 4 has been changed to phase 8 on this plan. Change all signal heads, pedestrian signal heads, pedestrian push buttons, and loops as needed to achieve the phasing shown.
- Pavement markings are existing.
- Maximum times shown in timing chart are for free-run operation only. Coordinated signal system timing values shall supersede these values.
- Install new cabinet on the existing cabinet foundation.
- All new cabinets and base extenders shall be black in color. See Project Special Provisions for details.
- City system data
Controller Asset: #0063

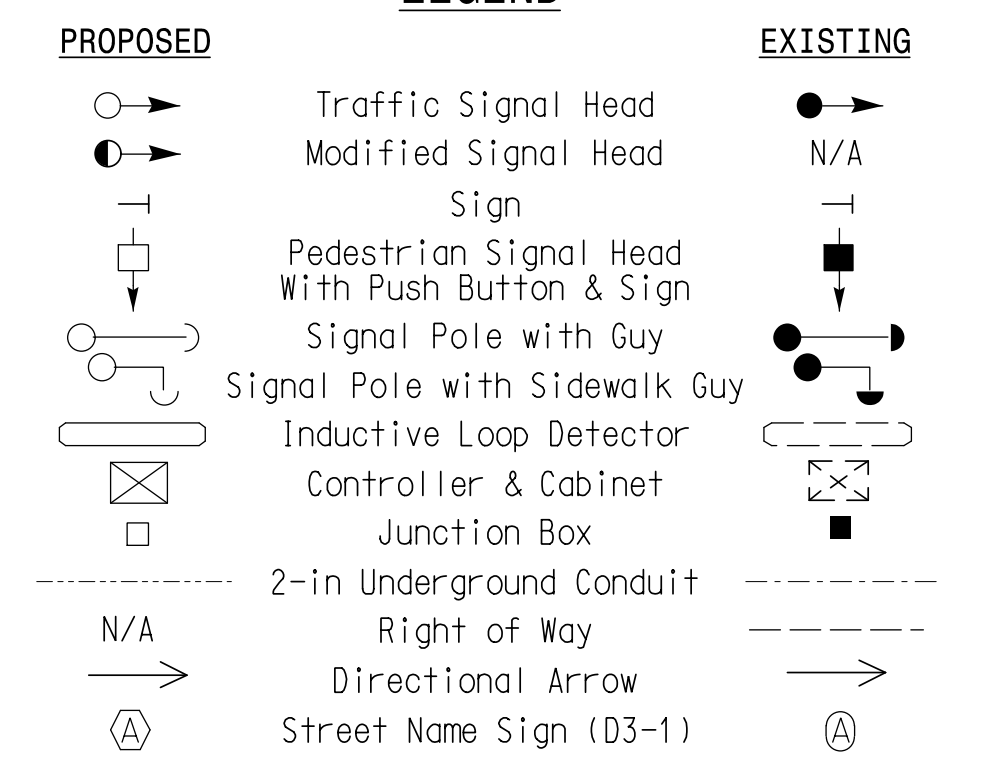


TIMING CHART

FEATURE	PHASE		
	2	6	8
Min Green *	15	15	7
Walk *	-	-	-
Ped Clear	-	-	-
Veh. Extension *	-	-	1.0
Max I *	45	45	25
Yellow	3.9	3.9	3.0
Red Clear	1.4	1.4	2.4
Red Revert	2.0	2.0	2.0
Actuations B4 Add *	-	-	-
Seconds / Actuation *	-	-	-
Max Initial *	-	-	-
Time Before Reduction *	-	-	-
Time To Reduce *	-	-	-
Minimum Gap	-	-	-
Locking Detector	-	-	-
Recall Position	MAX RECALL	MAX RECALL	-
Dual Entry	-	-	-
Simultaneous Gap	X	X	X

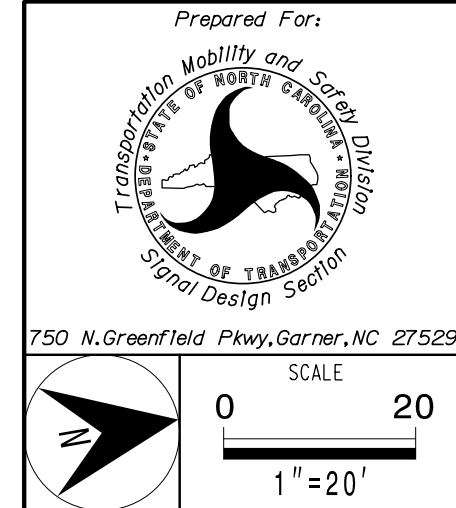
* These values may be field adjusted. Do not adjust Min Green and Extension times for phases 2 and 6 lower than what is shown. Min Green for all other phases should not be lower than 4 seconds.

LEGEND



Signal Upgrade

PLANS PREPARED IN THE OFFICE OF:
Kimley-Horn
NC License #F-0102
421 Fayetteville Street, Suite 600
Raleigh, NC 27601
(919) 677-2000



SR 1131 (Linwood Road) at Spencer Avenue	
Division 12	Gaston County Gastonia
PLAN DATE: May 2021	REVIEWED BY: SL Phillips
PREPARED BY: SP Pennington	REVIEWED BY: KP Baumann
REVISIONS	INIT. DATE

DOCUMENT NOT CONSIDERED FINAL UNLESS ALL SIGNATURES COMPLETED

Digitally signed by: *Kevin P. Baumann*
DATE: 3/11/2022
SIC. INVENTORY NO. 12-0063