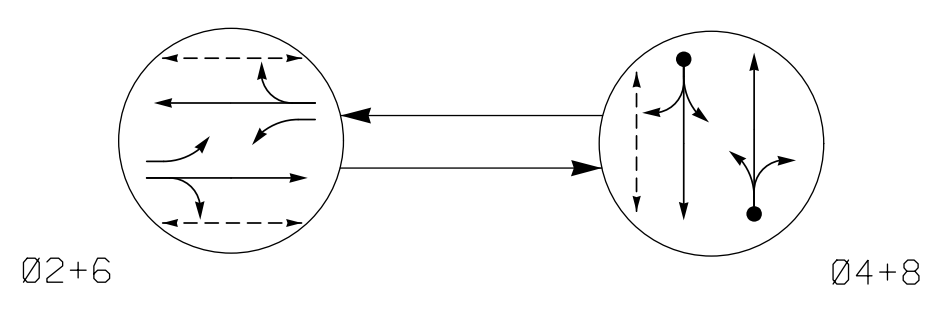


PHASING DIAGRAM



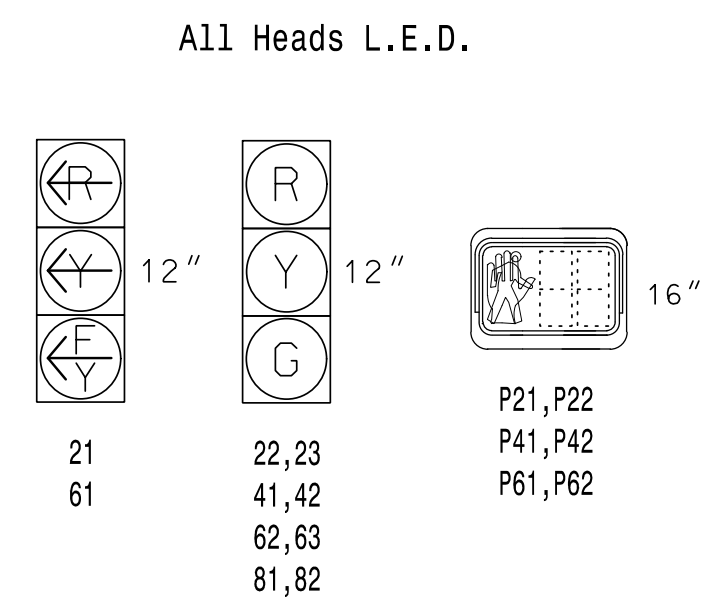
PHASING DIAGRAM DETECTION LEGEND

- ←● DETECTED MOVEMENT
- ← UNDETECTED MOVEMENT (OVERLAP)
- ←- UN SIGNALIZED MOVEMENT
- ←- PEDESTRIAN MOVEMENT

TABLE OF OPERATION

SIGNAL FACE	PHASE		
	Ø 2+6	Ø 4+8	F L H S
21	F	R	Y
22,23	G	R	Y
41,42	R	G	R
61	F	R	Y
62,63	G	R	Y
81,82	R	G	R
P21,P22	W	DW	DRK
P41,P42	DW	W	DRK
P61,P62	W	DW	DRK

SIGNAL FACE I.D.

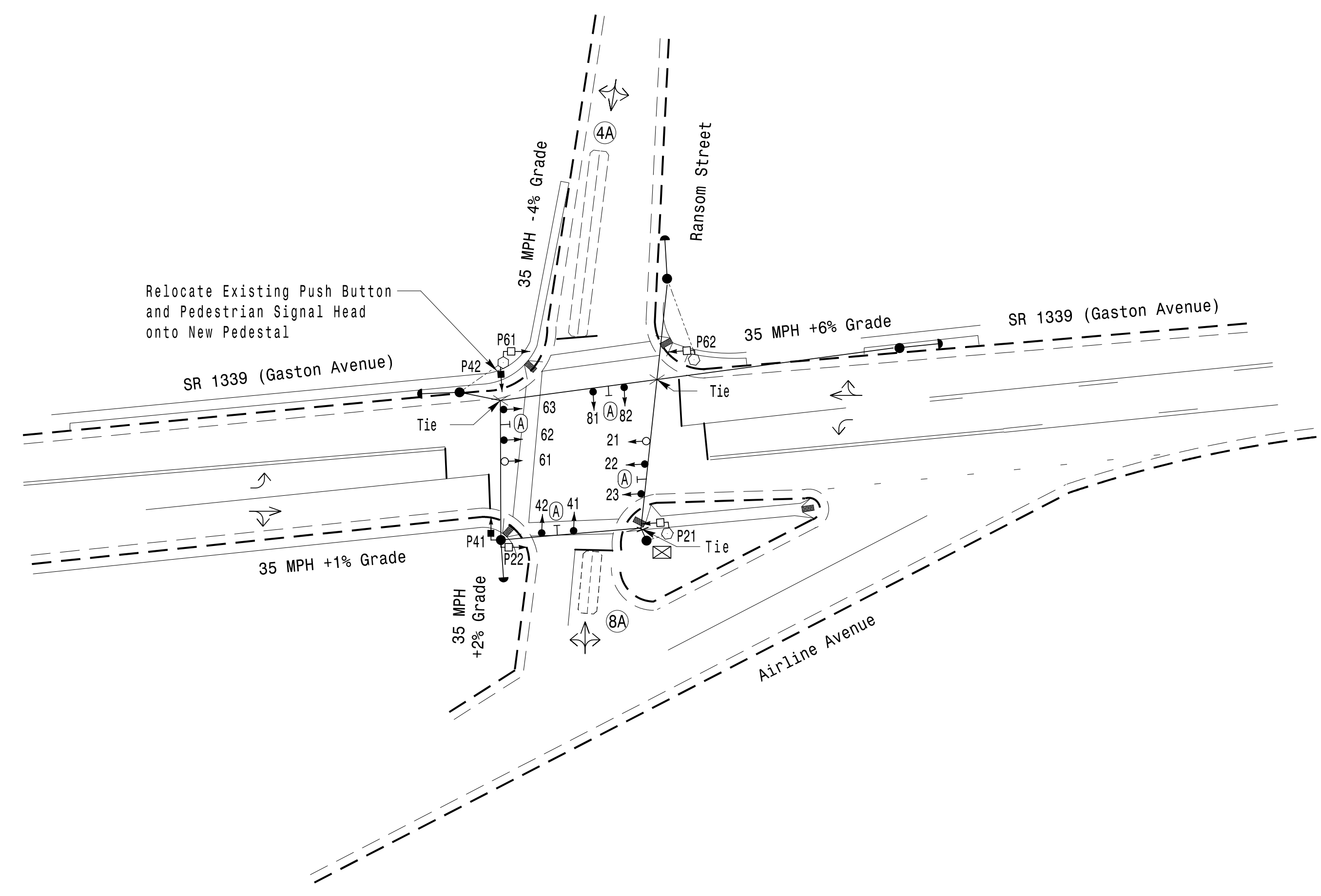


DETECTOR INSTALLATION CHART

LOOP	SIZE (FT)	DISTANCE FROM STOPBAR (FT)	TURNS	NEW LOOP	PROGRAMMING					TYPE	SYSTEM LOOP	NEW CARD
					PHASE	CALLING	EXTEND TIME	DELAY TIME	USE ADDED INITIAL			
4A	6X60	0	2-4-2	-	4	Yes	-	-	-	N	-	X
8A	6X20	0	2-4-2	-	8	Yes	-	-	-	N	-	X

2 Phase Semi-Actuated Gastonia Signal System NOTES

- Refer to "Roadway Standard Drawings NCDOT" dated January 2018 and "Standard Specifications for Roads and Structures" dated January 2018.
- Do not program signal for late night flashing operation unless otherwise directed by the Engineer.
- Reposition existing signal heads numbered 22, 23, 62, and 63.
- Set all detector units to presence mode.
- Locate new cabinet so as not to obstruct sight distance of vehicles turning right on red.
- Omit "WALK" and flashing "DON'T WALK" with no pedestrian calls.
- Program pedestrian heads to countdown the flashing "Don't Walk" time only.
- Pavement markings are existing.
- Maximum times shown in timing chart are for free-run operation only. Coordinated signal system timing values shall supersede these values.
- Existing signal heads 21, 22, 61, and 62 have been relabeled to 22, 23, 62, and 63, respectively.
- Install new cabinet on the existing foundation.
- All new cabinets and base extenders shall be black in color. See Project Special Provisions for details.
- All proposed signal heads shall be black in color. See Project Special Provisions for details.
- All proposed pedestrian pedestals and pushbutton posts shall be black in color. See Project Special Provisions for details.
- City system data:
Controller Asset #0059.



FEATURE	PHASE			
	2	4	6	8
Min Green *	10	7	10	7
Walk *	4	4	4	-
Ped Clear	7	11	8	-
Veh. Extension *	-	2.0	-	3.0
Max I *	45	25	45	25
Yellow	3.8	4.1	3.8	4.1
Red Clear	1.5	2.1	1.5	2.1
Red Revert	2.0	2.0	2.0	2.0
Actuations B4 Add *	-	-	-	-
Seconds /Actuation *	-	-	-	-
Max Initial *	-	-	-	-
Time Before Reduction *	-	-	-	-
Time To Reduce *	-	-	-	-
Minimum Gap	-	-	-	-
Locking Detector	-	-	-	-
Recall Position	MAX RECALL	-	MAX RECALL	-
Dual Entry	-	X	-	X
Simultaneous Gap	X	X	X	X

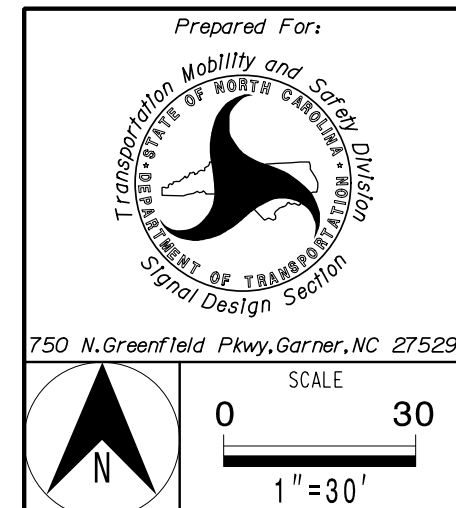
* These values may be field adjusted. Do not adjust Min Green and Extension times for phases 2 and 6 lower than what is shown. Min Green for all other phases should not be lower than 4 seconds.

LEGEND

PROPOSED	EXISTING
	N/A
N/A	
N/A	

Signal Upgrade

PLANS PREPARED IN THE OFFICE OF:
Kimley»Horn
 NC License #0102
 421 Fayetteville Street, Suite 600
 Raleigh, NC 27601
 (919) 677-2000



SR 1339 (Gaston Avenue) at Ransom Street	
Division 12	Gaston County Gastonia
PLAN DATE: May 2021	REVIEWED BY: SL Phillips
PREPARED BY: LL Matney	REVIEWED BY: KP Baumann
REVISIONS	INIT. DATE

DOCUMENT NOT CONSIDERED FINAL UNLESS ALL SIGNATURES COMPLETED

Professional Engineer Seal for Kevin P. Baumann, State of North Carolina, License No. 044434.

DocuSigned by: *Kevin P. Baumann*
 DATE: 3/11/2022
 SIGNATURE: _____
 DATE: _____

3/9/2022 11:15:20 AM DanHelle.Curr1 ***Kimley-Horn.comSE-RAL\MRAL\TIPDK\TIPDK-TIS\011036569 Gastonia Signal System9 Signal.sx4 - Signal Design\ME120059-2021.dgn