

CHANNEL 15
SPLICE ENCLOSURE AT
CHESTER ST. (US 321) AT I-85 SB RAMP (EXIT 17)
SIG ID 12-0023 (CHESTER ST. [US 321] AT I-85 SB RAMP [EXIT 17])
SIG ID 12-0921 (CHESTER ST. [US 321] AT RANKIN LAKE RD.)
SIG ID 12-1803 (CHESTER ST. [US 321] AT I-85 SB EXIT RAMP/I-85 NB ENTRANCE RAMP)
CCTV CAMERA-32

COLOR CODE
TIA/EIA 598-C

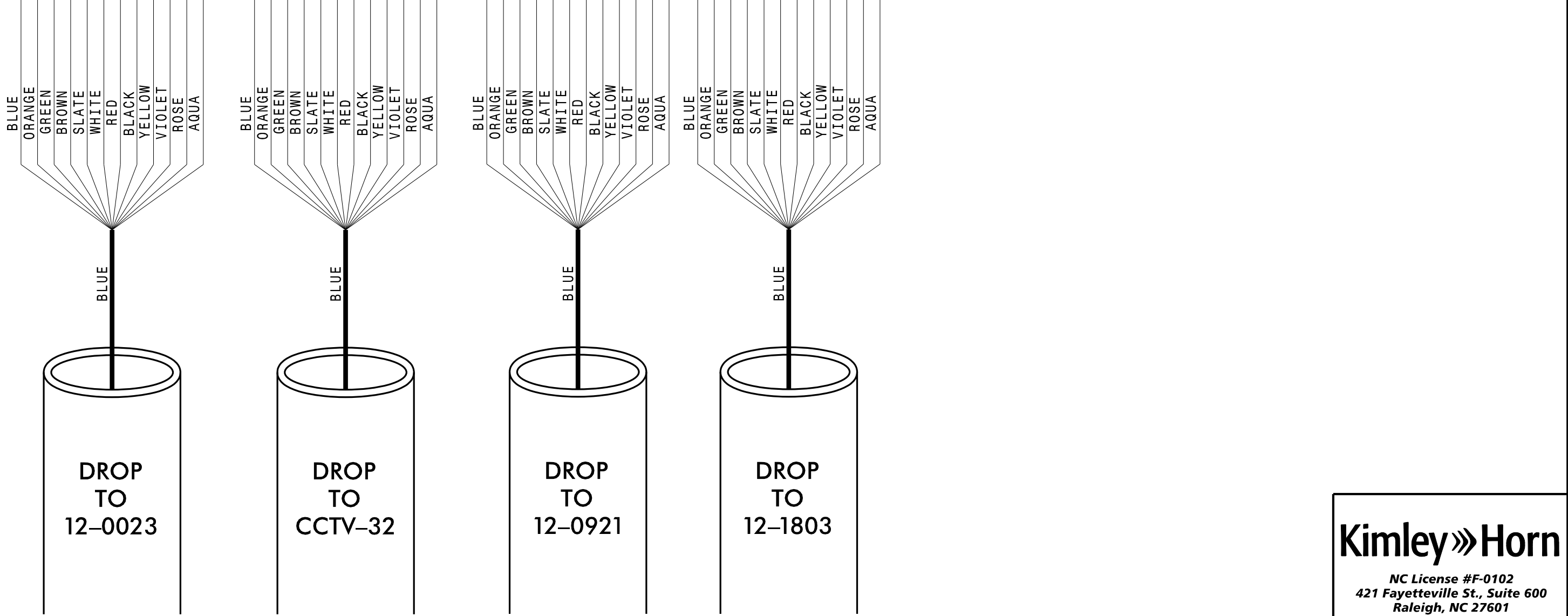
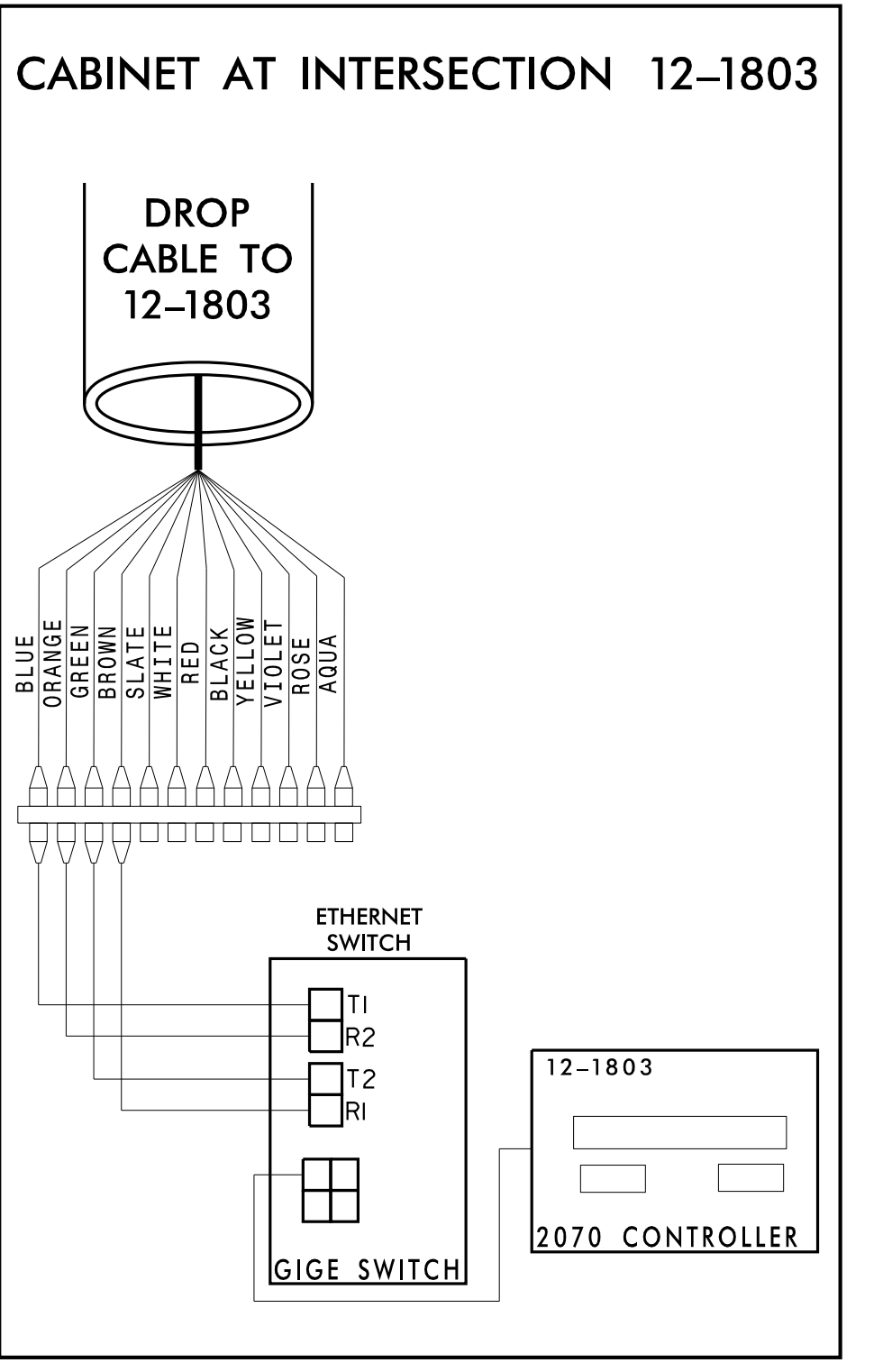
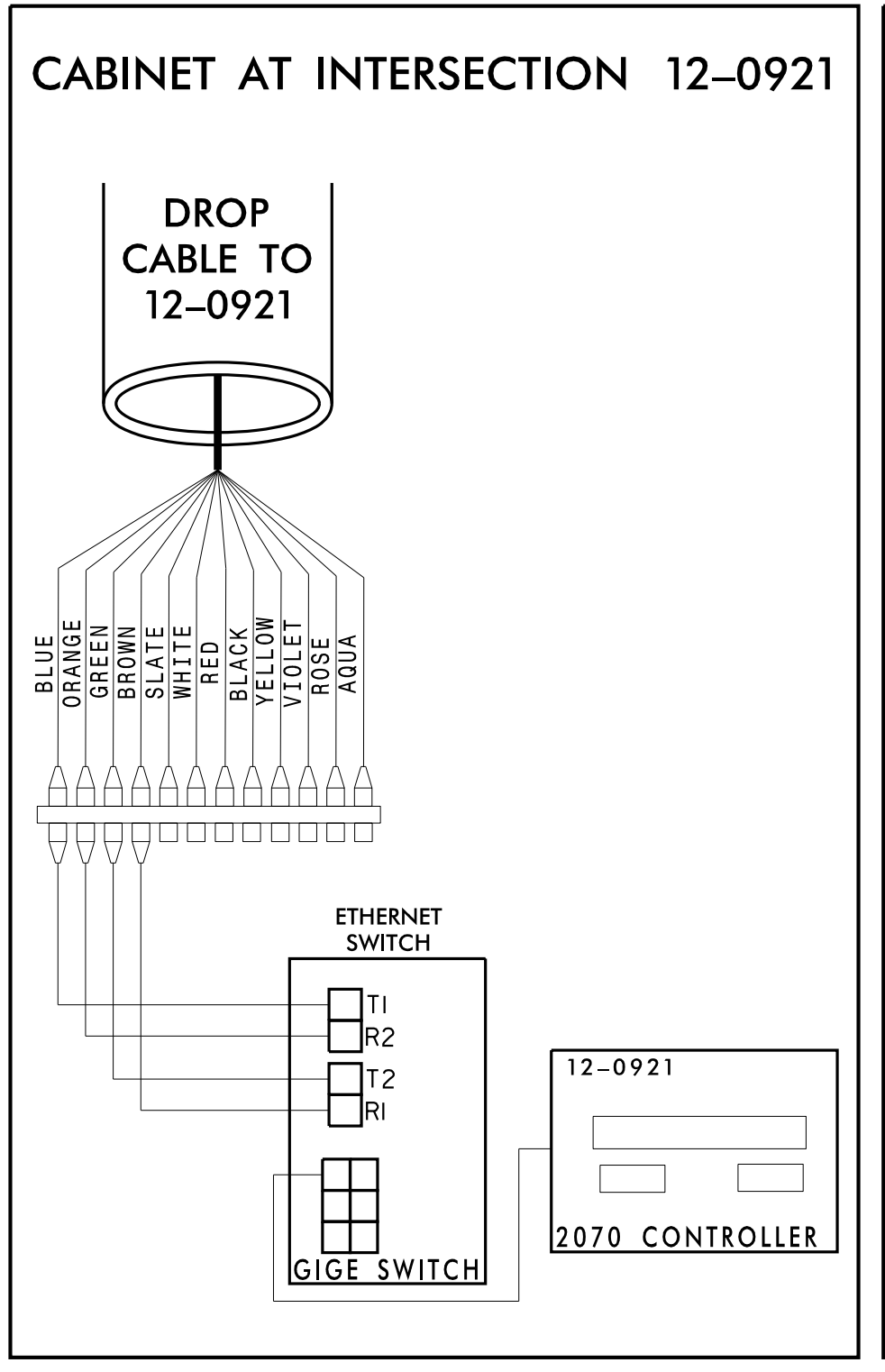
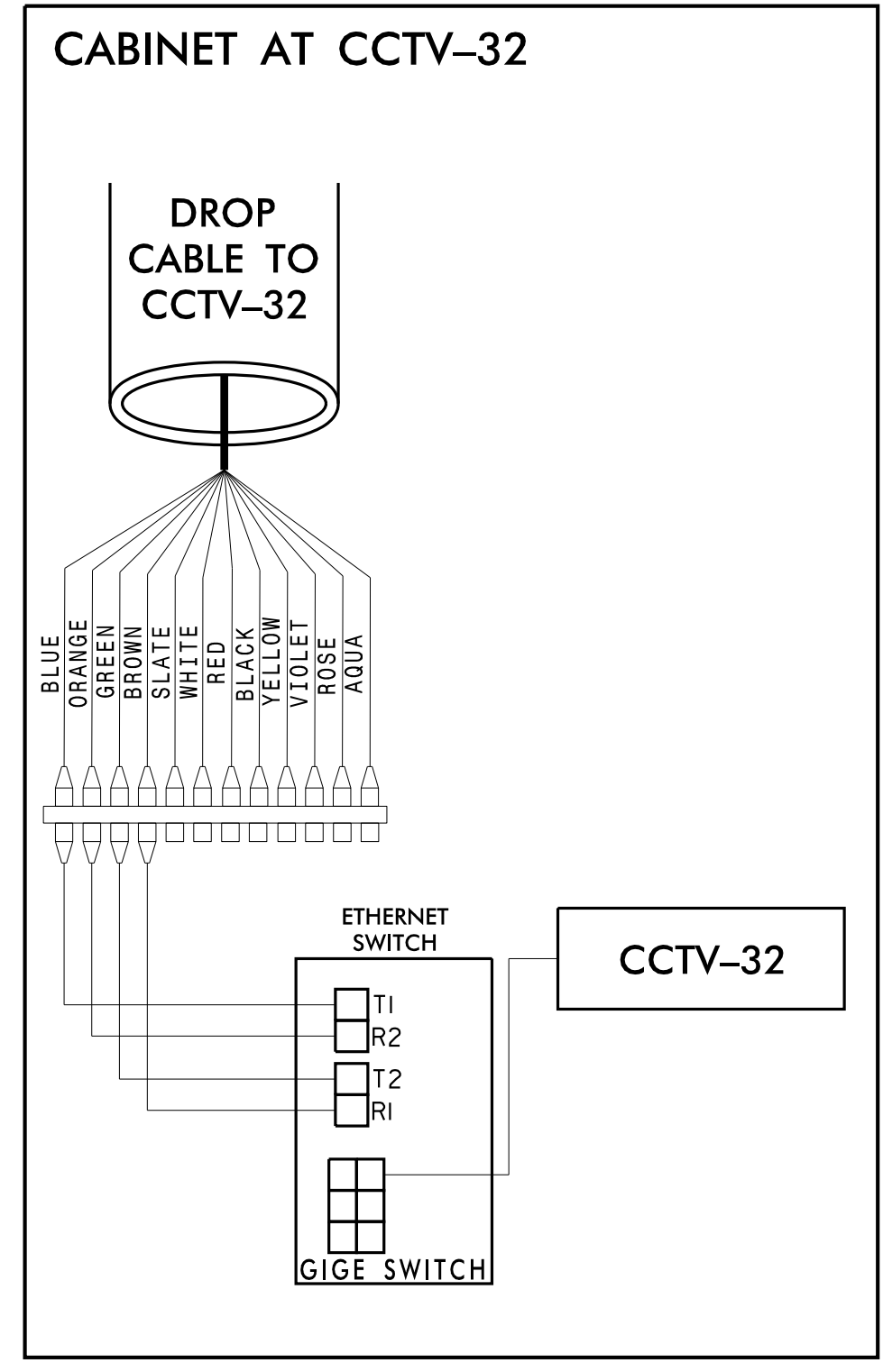
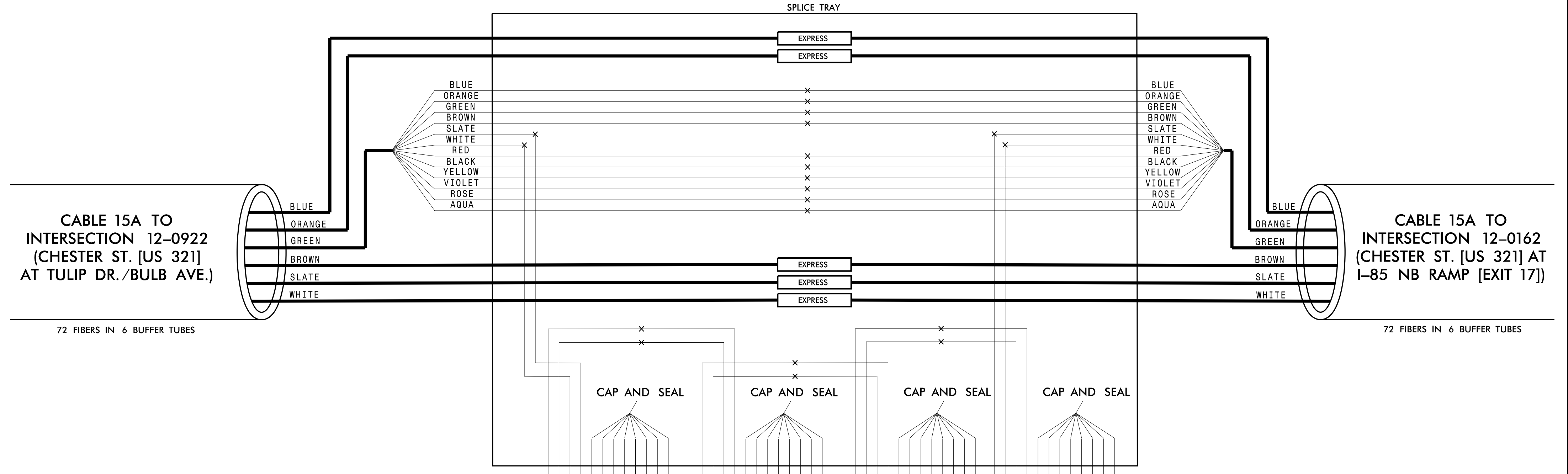
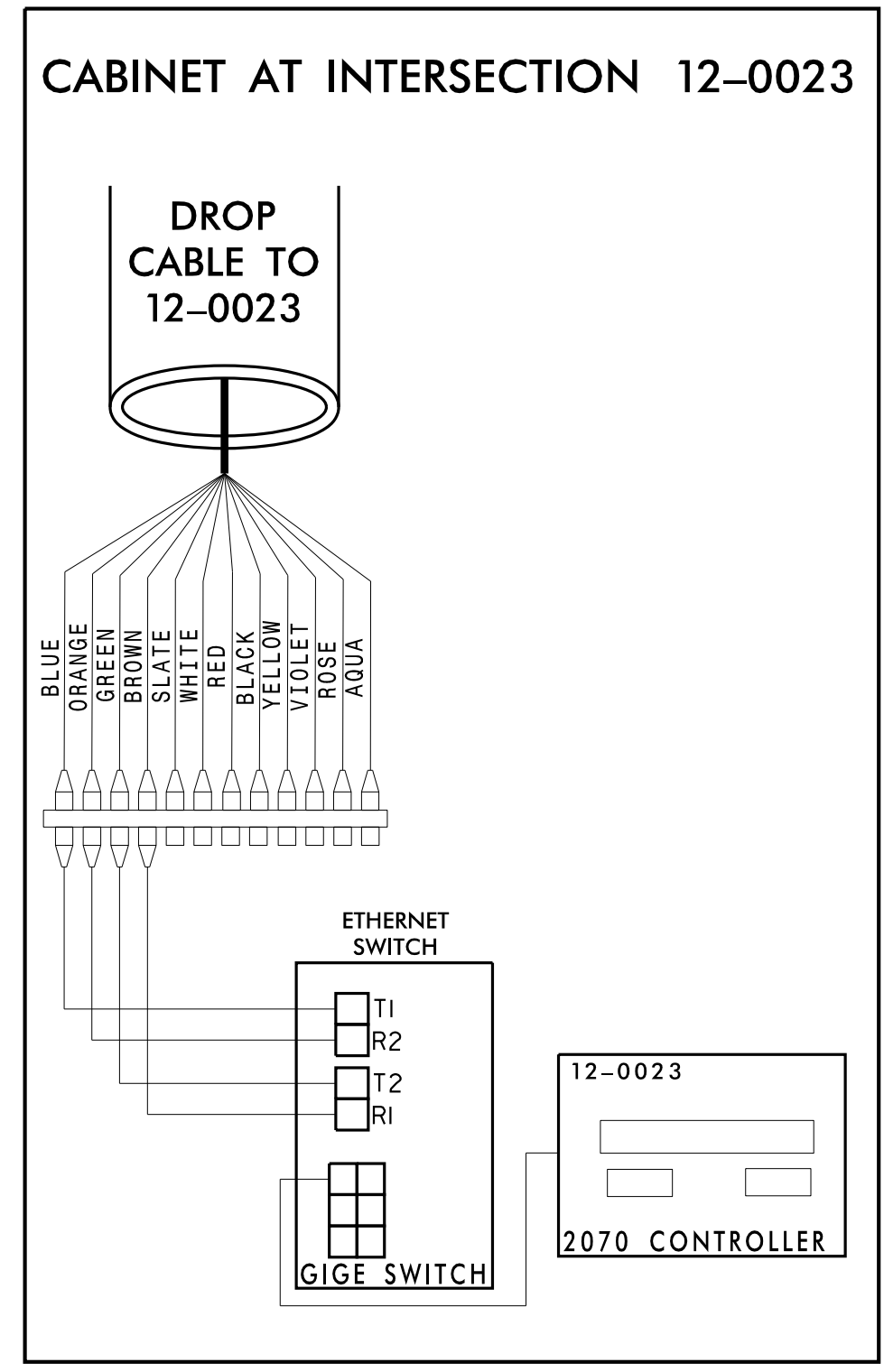
(1) BLUE	(7) RED
(2) ORANGE	(8) BLACK
(3) GREEN	(9) YELLOW
(4) BROWN	(10) VIOLET
(5) SLATE	(11) ROSE
(6) WHITE	(12) AQUA

LEGEND

X - FUSION SPLICE INDIVIDUAL FIBER
O - EXISTING SPLICE
□ - EXPRESS INDIVIDUAL FIBER

EXPRESS - EXPRESS ENTIRE BUFFER TUBE
SPLICE - SPLICE ENTIRE BUFFER TUBE OR MAINTAIN IF EXISTING EXPRESSED

NOTES:
1. FIBER INTERCONNECT CENTER RACKS ARE SCHEMATIC ONLY - ACTUAL EQUIPMENT FORM MAY VARY.
2. ETHERNET SWITCH TERMINATION CONFIGURATIONS ARE GENERIC. CONTRACTOR IS RESPONSIBLE FOR DETERMINING /ENSURING PROPER TERMINATION.
3. CONTRACTOR IS RESPONSIBLE FOR FIELD VERIFYING EXISTING SPLICING. THE CONTRACTOR SHALL COORDINATE WITH THE ENGINEER WHERE EXISTING SPLICING IS NOT AS EXPECTED.



CHANNEL 15

CITY OF GASTONIA COMPUTERIZED SIGNAL SYSTEM

SPLICE DETAIL

Division 12 GASTON COUNTY

PLAN DATE: DECEMBER 2021 REVIEWED BY: K. SMITH

PREPARED BY: S. BUTLER REVIEWED BY: I. VAN OSDELL

SCALE: 0

REVISIONS: INIT. DATE

DocuSigned by: Inger Van OsdeLL 3/16/2022

SEAL: NORTH CAROLINA PROFESSIONAL SEAL 028952

Kimley-Horn

NC License #F-0102
421 Fayetteville St., Suite 600
Raleigh, NC 27601
Tel: (919) 677-2000
Fax: (919) 677-2050

3/15/2022 \\kimley-horn.com\SE-RAL\NRA\1-TP\TOV\ITS\01036569_Gastonia_Signal_System\6_Tasks\Splicing\SPL155.dgn