

CHANNEL 7  
SPLICE ENCLOSURE AT  
(LOWELL-BETHESDA RD. [SR 2439] AT  
TITMAN RD. [SR 2478])  
SIG ID 12-0373

**COLOR CODE**  
TIA/EIA 598-C

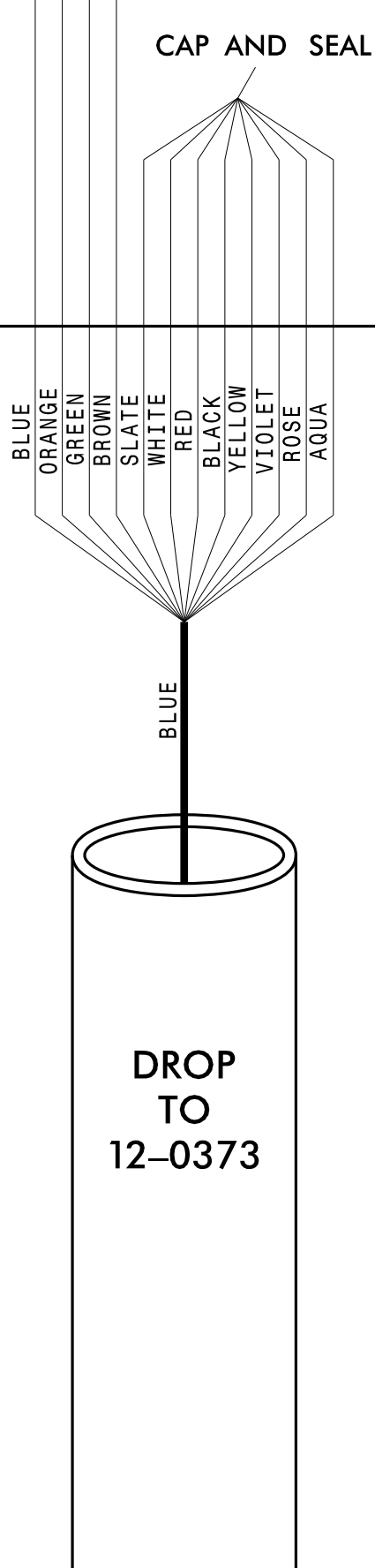
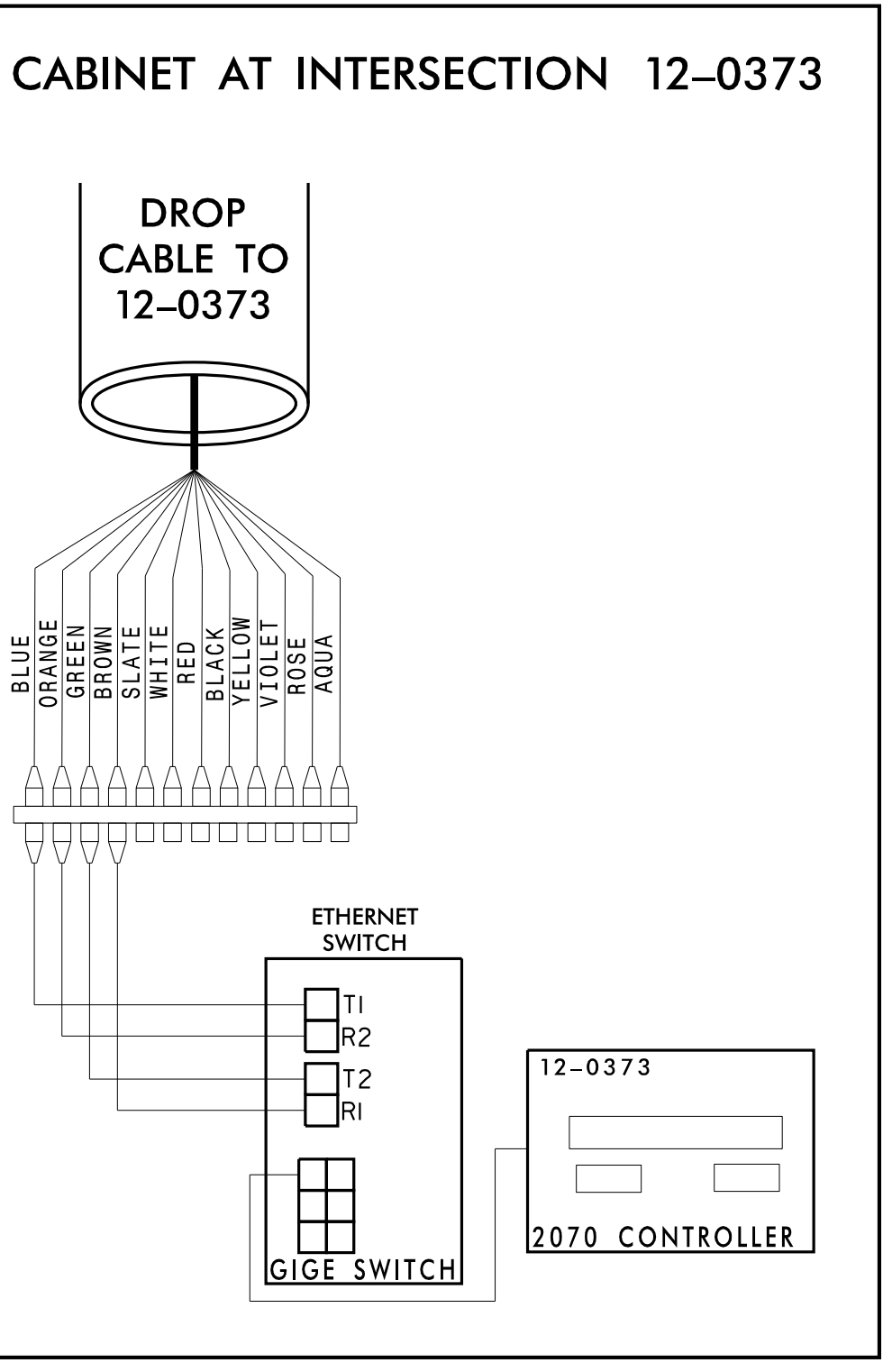
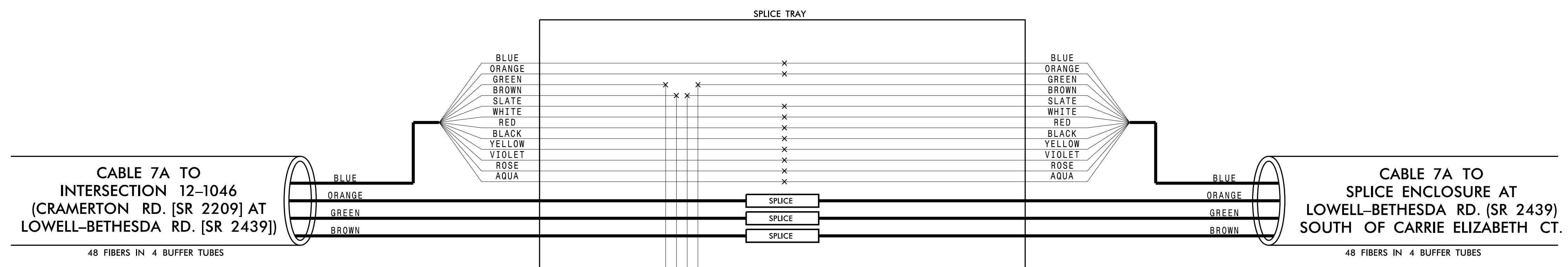
(1) BLUE	(7) RED
(2) ORANGE	(8) BLACK
(3) GREEN	(9) YELLOW
(4) BROWN	(10) VIOLET
(5) SLATE	(11) ROSE
(6) WHITE	(12) AQUA

**LEGEND**

X - FUSION SPLICE INDIVIDUAL FIBER  
 O - EXISTING SPLICE  
 □ - EXPRESS INDIVIDUAL FIBER

EXPRESS - EXPRESS ENTIRE BUFFER TUBE  
 SPLICE - SPLICE ENTIRE BUFFER TUBE OR MAINTAIN IF EXISTING EXPRESSED

**NOTES:**  
 1. FIBER INTERCONNECT CENTER RACKS ARE SCHEMATIC ONLY - ACTUAL EQUIPMENT FORM MAY VARY.  
 2. ETHERNET SWITCH TERMINATION CONFIGURATIONS ARE GENERIC. CONTRACTOR IS RESPONSIBLE FOR DETERMINING /ENSURING PROPER TERMINATION.  
 3. CONTRACTOR IS RESPONSIBLE FOR FIELD VERIFYING EXISTING SPLICING. THE CONTRACTOR SHALL COORDINATE WITH THE ENGINEER WHERE EXISTING SPLICING IS NOT AS EXPECTED.



**CHANNEL 7**  
CITY OF GASTONIA COMPUTERIZED SIGNAL SYSTEM  
SPLICE DETAIL

Division 12 GASTON COUNTY  
 PLAN DATE: DECEMBER 2021 REVIEWED BY: K. SMITH  
 PREPARED BY: S. BUTLER REVIEWED BY: I. VAN OSDELL

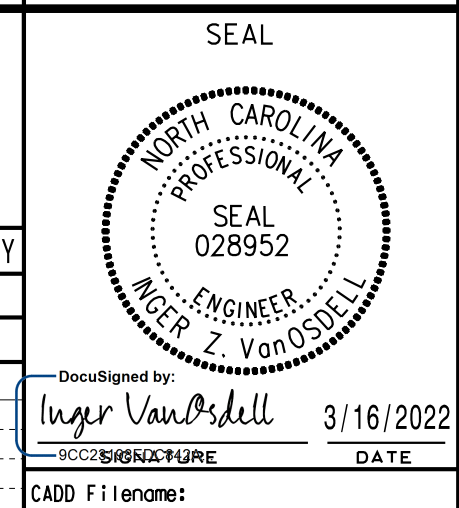
Scale: 0

Revisions table with columns: REVISIONS, INIT., DATE

DocuSigned by: Inger Van OsdeLL 3/16/2022

CADD File name:

**Kimley»Horn**  
 NC License #F-0102  
 421 Fayetteville St., Suite 600  
 Raleigh, NC 27601  
 Tel: (919) 677-2000  
 Fax: (919) 677-2050



3/15/2022  
 \\kimley-horn.com\SE-RAL\NRL\_TPTD\ITS\01036569\_Gastonia\_Signaling\SPL067.dgn