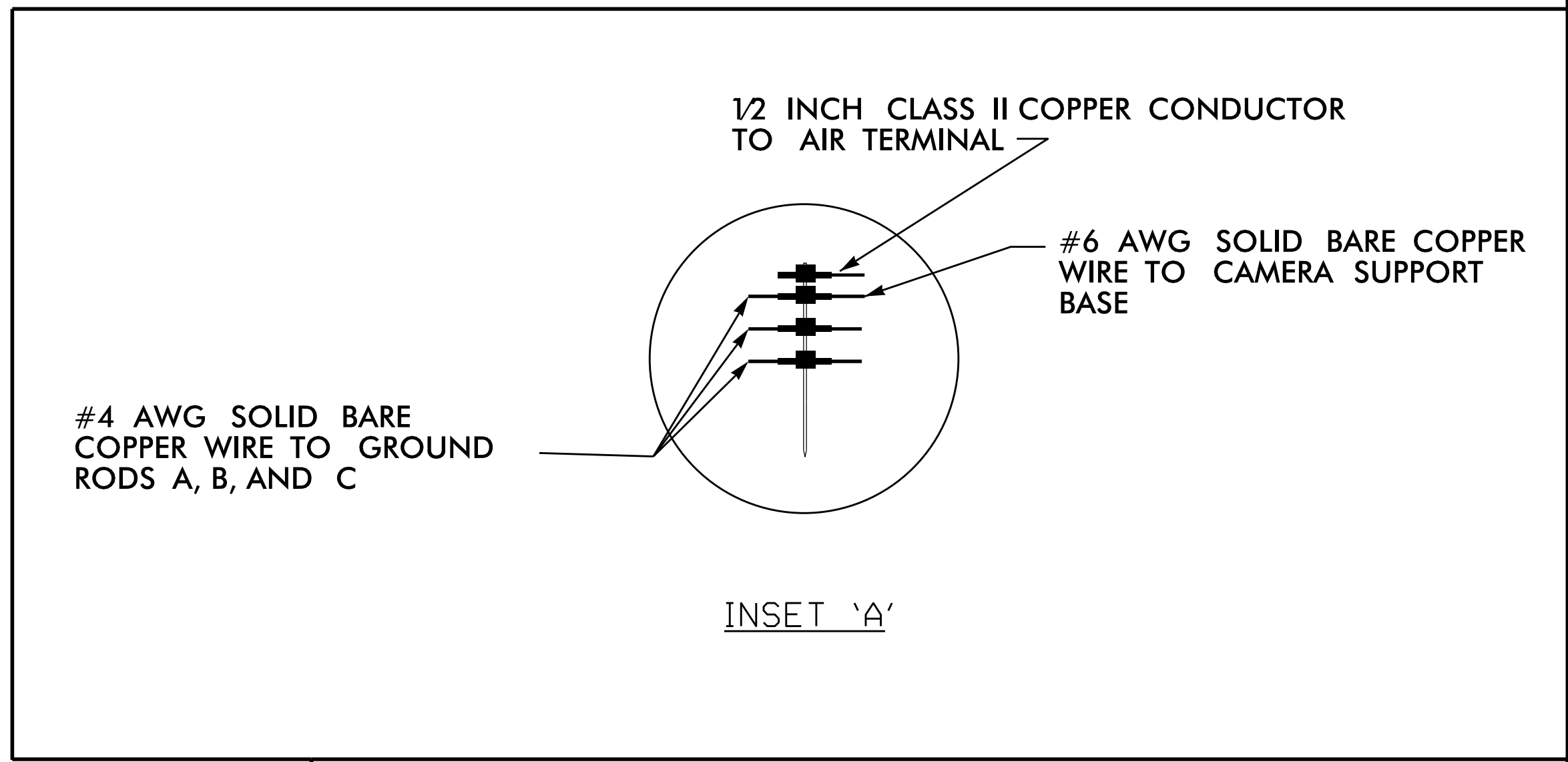
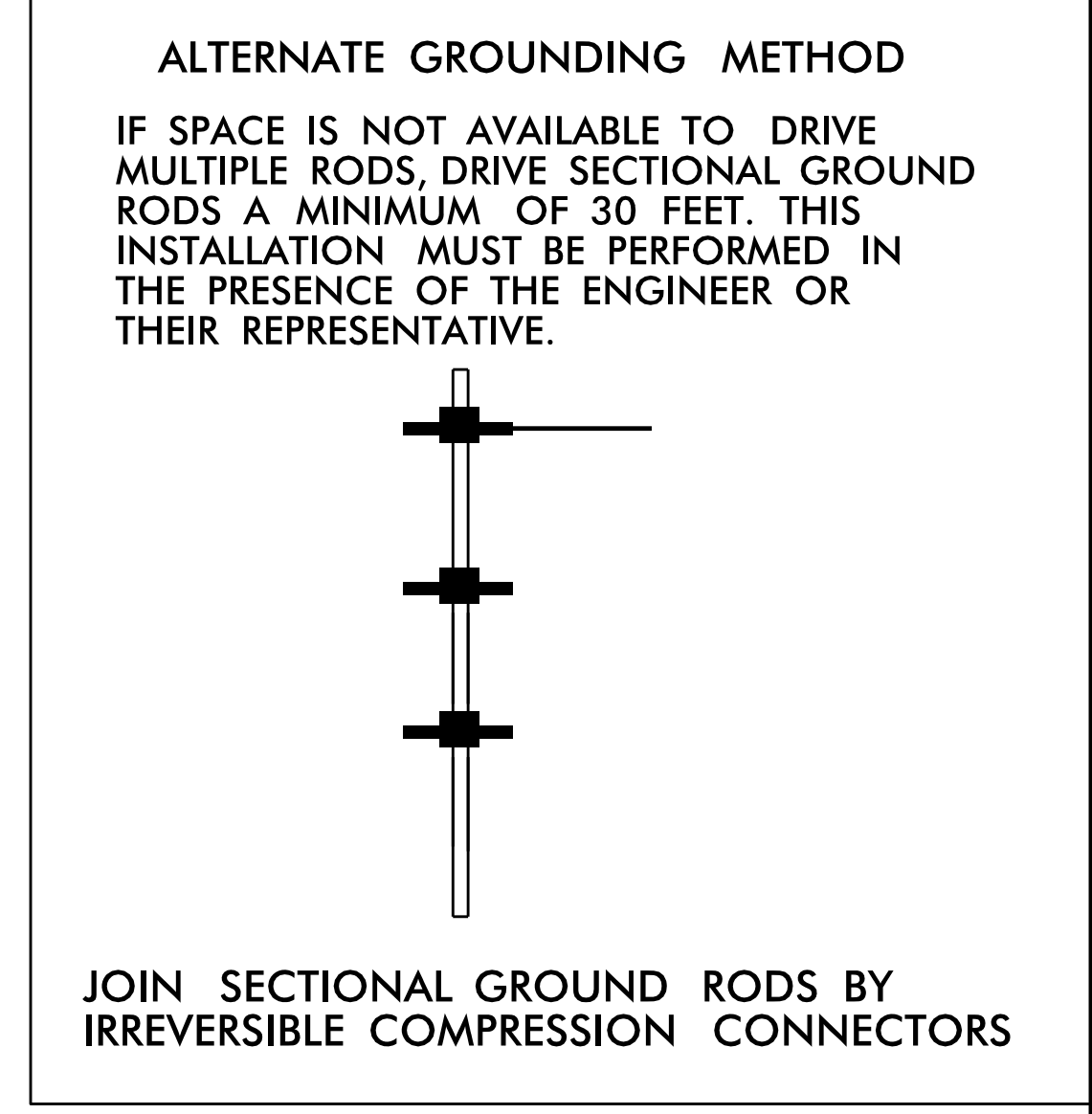
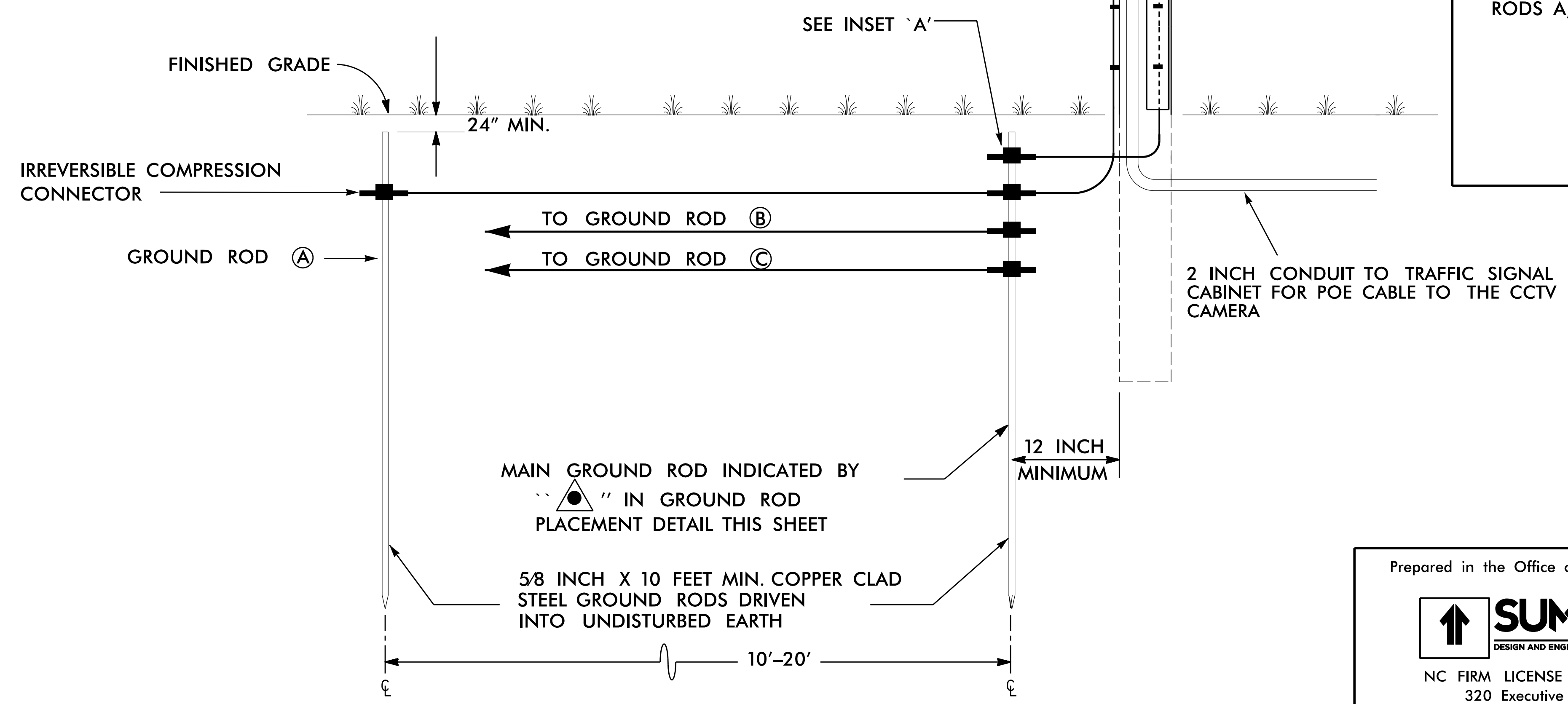


BOND CCTV TO GROUND ROD USING A #6 SOLID BARE COPPER WIRE. BOND #6 AWG SOLID BARE COPPER WIRE TO CAMERA SUPPORT BASE BY AN ALUMINUM TO COPPER #2 - #14 AWG LUG. ATTACH TO CAMERA BASE WITH A STAINLESS STEEL SELF TAPPING SCREW. REMOVE PAINT OR PROTECTIVE COATING WHERE ATTACHING LUG ONLY.

INSTALL 2-INCH PVC U-GUARD OVER COPPER CONDUCTOR FROM GROUND LEVEL TO 10 FEET (MINIMUM) ABOVE THE GROUND

FOR UNDERGROUND POE CABLE TO THE CCTV CAMERA: INSTALL 2 INCH RIGID GALVANIZED STEEL RISER WITH WEATHERHEAD FOR POE CABLE TO CCTV CAMERA.



- NOTES:**
1. BOND CLASS II, 28 STRAND (MINIMUM), 15 AWG (MINIMUM) ROPE-LAY BARE COPPER CONDUCTOR TO THE MAIN GROUND ROD BY AN EXOTHERMIC WELD METHOD. MAINTAIN MAXIMUM HORIZONTAL SEPARATION BETWEEN COPPER CONDUCTOR AND RISER.
 2. ALL OTHER CONNECTIONS TO GROUND RODS SHALL BE MADE USING IRREVERSIBLE COMPRESSION CONNECTOR.
 3. THE CONTRACTOR MAY, UPON APPROVAL OF THE ENGINEER, INSTALL A 30-FOOT SECTIONAL GROUND ROD FOR INSTANCES WHEN CONDITIONS WILL NOT ALLOW FOR THE INSTALLATION OF THE 3 - RADIAL GROUND RODS. THIS INSTALLATION MUST BE PERFORMED IN THE PRESENCE OF THE ENGINEER OR THEIR REPRESENTATIVE.
 4. INSTALL MARKER TAPE DIRECTLY ABOVE ALL GROUNDING ELECTRODES AND CONDUCTORS AT A DEPTH OF 12 INCHES.

DOCUMENT NOT CONSIDERED FINAL UNLESS ALL SIGNATURES COMPLETED

Prepared in the Office of:

NC FIRM LICENSE No: P-0339
320 Executive Court
Hillsborough, NC 27278
(919) 732-3883
(919) 732-6676 (FAX)

Prepared for the Offices of:

750 N. Greenfield Place, Garner, NC 27529

SCALE: N.T.S.

Gastonia Computerized Signal System
CCTV Camera Wood Pole
Typical Detail

Division 12 Gaston County

PLAN DATE: February 2022 REVIEWED BY: S. Yow

PREPARED BY: J. Smith REVIEWED BY: G. Fuller

REVISIONS	INIT.	DATE

SEAL

DocuSigned by: Gregory A. Fuller 2/11/2022

CADD Filename: