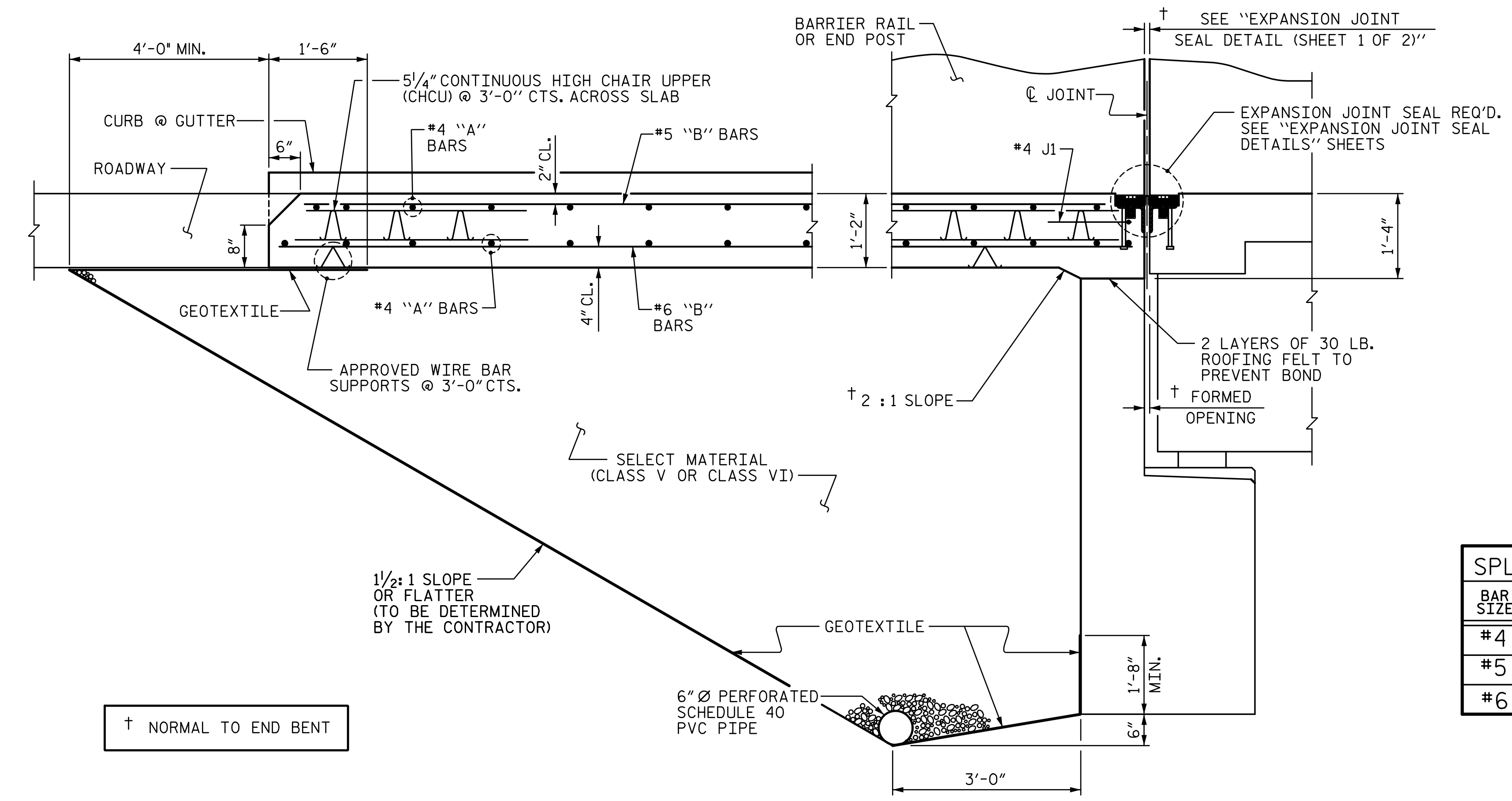
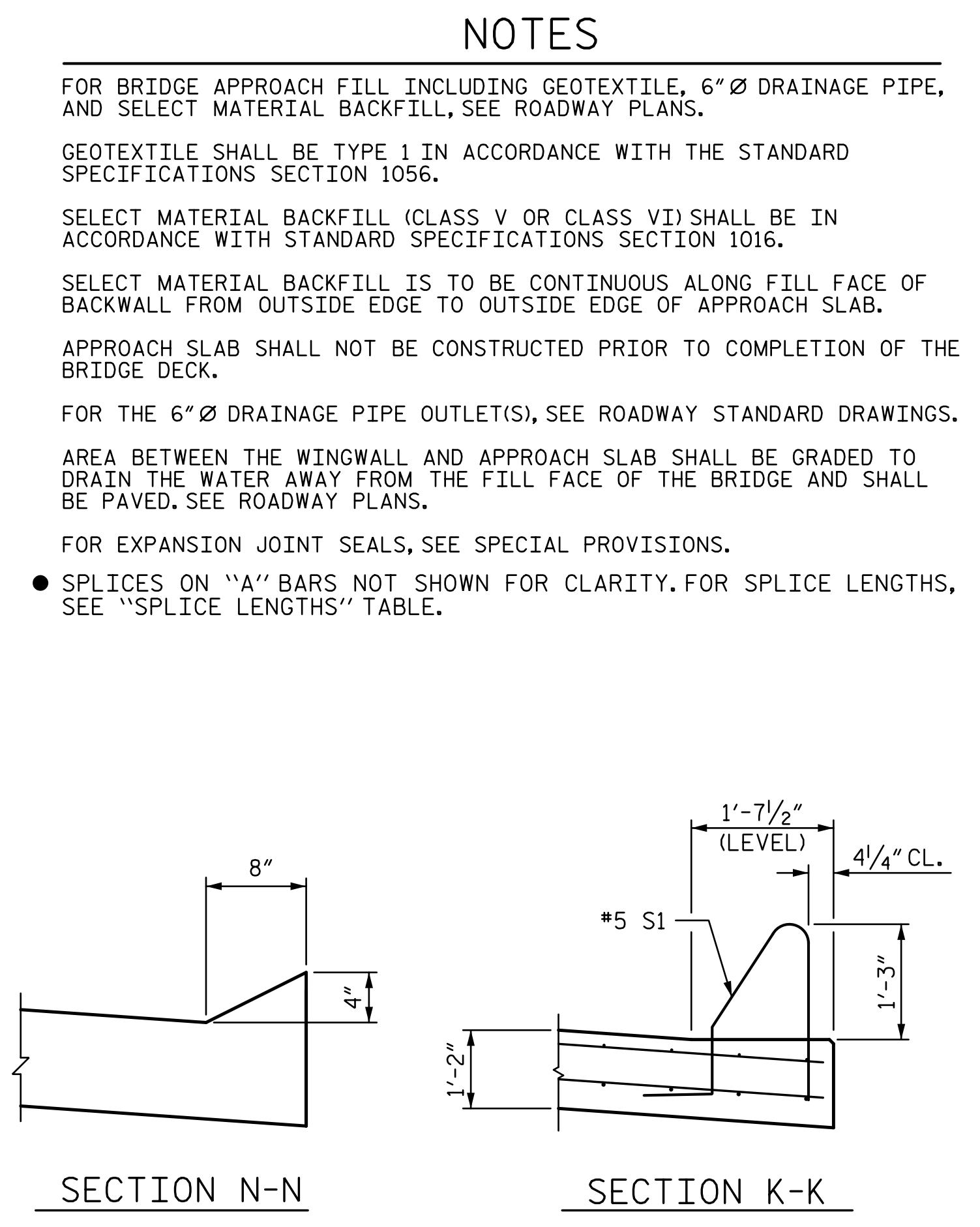
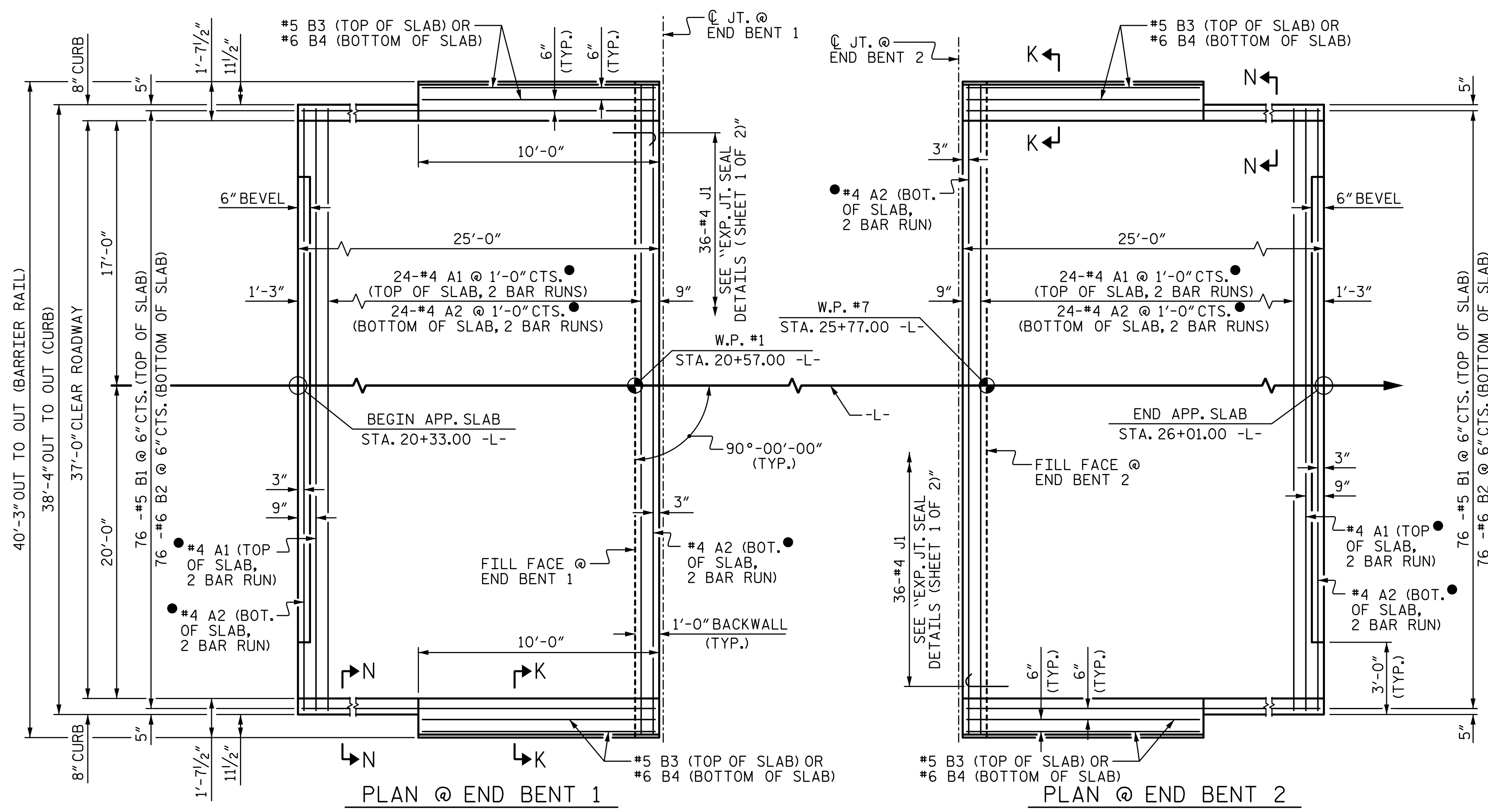


R:\Structures\Station\Finals\401_069_B5810_SMU_ASI_035_120022.dgn 1/16/2022 4:52:41 PM Igr\scm



SPLICE LENGTHS		
BAR SIZE	EPOXY COATED	UNCOATED
#4	1'-11"	1'-7"
#5	2'-5"	2'-0"
#6	3'-7"	2'-5"

BILL OF MATERIAL

APPROACH SLAB AT BENT 1					
BAR NO.	NO.	SIZE	TYPE	LENGTH	WEIGHT
*A1	50	#4	STR	20'-11"	699
A2	52	#4	STR	20'-9"	721
*B1	76	#5	STR	23'-10"	1889
B2	76	#6	STR	24'-8"	2816
*B3	4	#5	STR	9'-4"	39
B4	4	#6	STR	9'-8"	58
*J1	36	#4	1	1'-5"	34
REINFORCING STEEL **				LBS.	3,595
*EPOXY COATED REINFORCING STEEL **				LBS.	2,661
CLASS AA CONCRETE **				C. Y.	42.5
APPROACH SLAB AT BENT 2					
BAR NO.	NO.	SIZE	TYPE	LENGTH	WEIGHT
*A1	50	#4	STR	20'-11"	699
A2	52	#4	STR	20'-9"	721
*B1	76	#5	STR	23'-10"	1889
B2	76	#6	STR	24'-8"	2816
*B3	4	#5	STR	9'-4"	39
B4	4	#6	STR	9'-8"	58
*J1	36	#4	1	1'-5"	34
REINFORCING STEEL **				LBS.	3,595
*EPOXY COATED REINFORCING STEEL **				LBS.	2,661
CLASS AA CONCRETE **				C. Y.	42.5

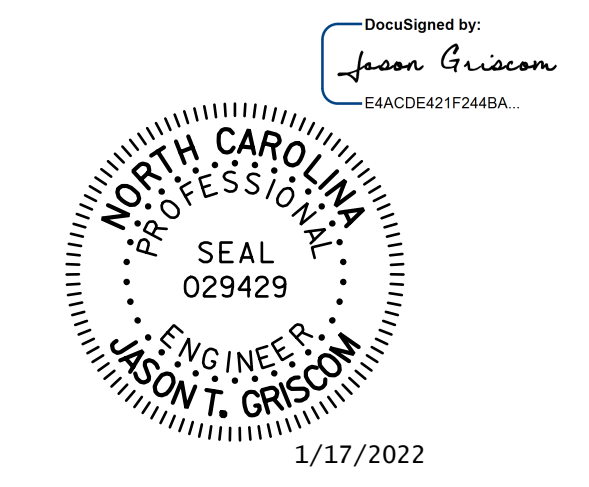
BAR TYPE

ALL BAR DIMENSIONS ARE OUT TO OUT

** QUANTITIES FOR BARRIER RAIL NOT INCLUDED. SEE SHEET 2 OF 2.

THE QUANTITY OF #4 J1 BARS ON THE BILL OF MATERIAL IS BASED ON 1'-0" CENTERS. J1 BARS SHALL BE PLACED AT EACH VERTICAL STUD ANCHOR BOLT. IN THE EVENT THAT THE NUMBER OF VERTICAL STUD ANCHORS EXCEEDS THE NUMBER OF J1 BARS SPECIFIED, ADDITIONAL J1 BARS WILL NOT BE REQUIRED.

PROJECT NO. **B-5810**
CABARRUS COUNTY
 STATION: **23+17.00 -L-**
 SHEET 1 OF 2



STV 100 YEARS
 STV ENGINEERS, INC.
 900 West Trade St., Suite 715
 Charlotte, NC 28202
 NC License Number F-0991

DOCUMENT NOT CONSIDERED FINAL UNLESS ALL SIGNATURES COMPLETED

STATE OF NORTH CAROLINA DEPARTMENT OF TRANSPORTATION RALEIGH					
BRIDGE APPROACH SLAB FOR FLEXIBLE PAVEMENT					SHEET NO.
REVISIONS					S-35
NO.	BY:	DATE:	NO.	BY:	DATE:
1			3		
2			4		
TOTAL SHEETS					36

ASSEMBLED BY : LGH DATE : 6-19
 CHECKED BY : MLO DATE : 12-19
 DESIGN ENGINEER OF RECORD : J. GRISCOM DATE : 1-22