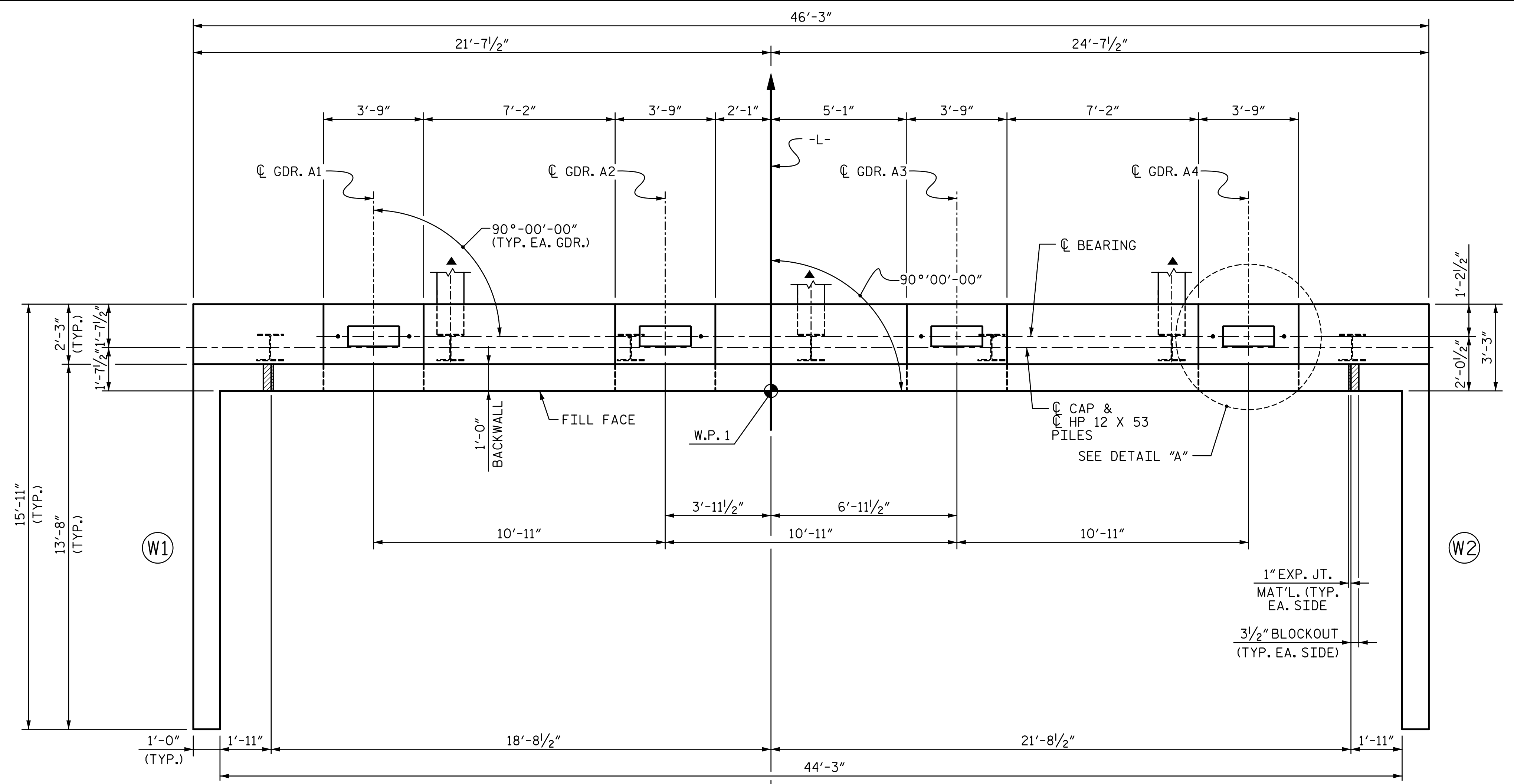
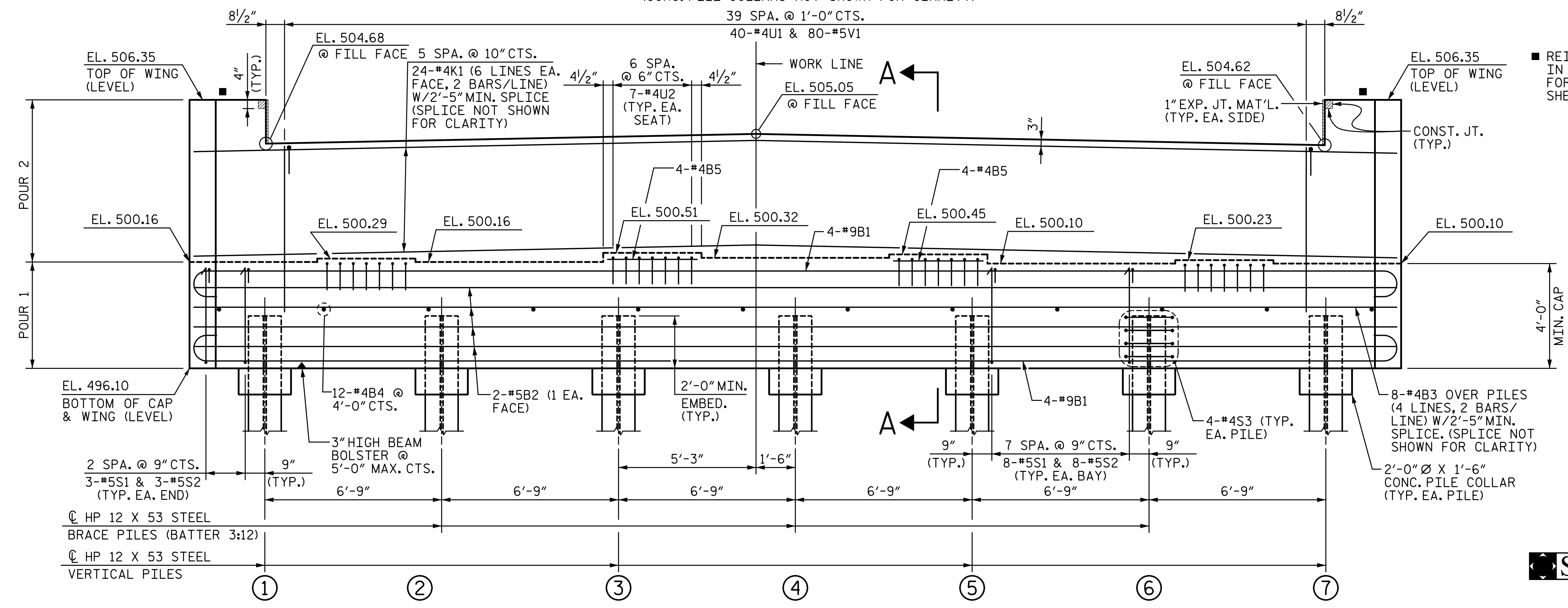


R:\Structures\Station\Final\401_053_B5810_SMU_EL_027_120022.dgn 4:51:54 PM 1/16/2022



PLAN

(CONC. PILE COLLARS NOT SHOWN FOR CLARITY)

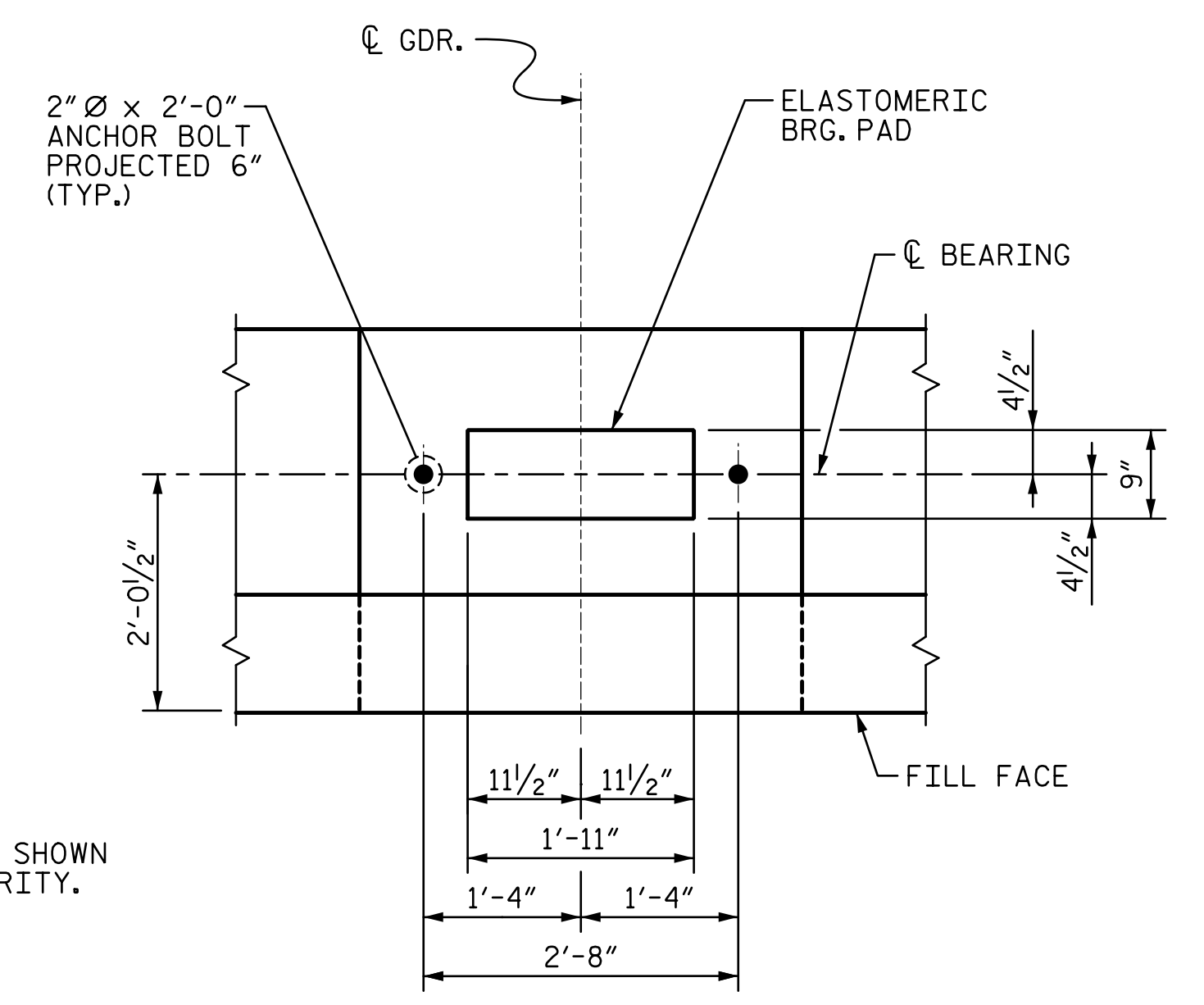


ELEVATION

(LOOKING IN THE DIRECTION OF STATIONING)

NOTES:

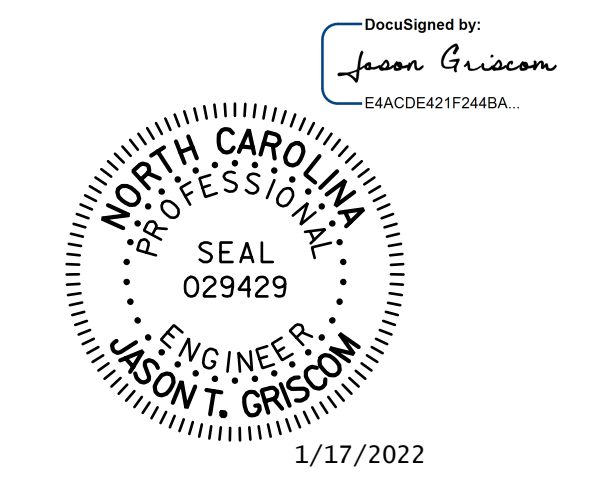
- STIRRUPS AND "U" BARS IN CAP MAY BE SHIFTED AS NECESSARY TO CLEAR ANCHOR BOLTS.
- THE TOP SURFACE AREAS OF THE END BENT CAP SHALL BE CURED IN ACCORDANCE WITH THE STANDARD SPECIFICATIONS EXCEPT THAT THE MEMBRANE CURING COMPOUND METHOD SHALL NOT BE USED.
- BACKWALL SHALL BE PLACED BEFORE APPLYING THE EPOXY PROTECTIVE COATING.
- THE TOP SURFACE OF THE CAP EXCEPT THE BRIDGE SEAT BUILDUPS SHALL BE SLOPED TRANSVERSELY FROM THE FILL FACE TO THE OUTSIDE FACE AT THE RATE OF 2%.
- WHEN DRIVING PILES, THE MAXIMUM BLOW COUNT SHALL NOT BE EXCEEDED.
- FOR OTHER NOTES, SEE "FOUNDATION LAYOUT" SHEET.
- SEE "ELASTOMERIC BEARING DETAILS" SHEET FOR 2" Ø ANCHOR BOLT DETAIL.
- THE CONCRETE IN THE HATCHED AREA OF THE BACKWALL SHALL BE POURED AFTER THE BARRIER RAIL IS CAST IF SLIP FORMING IS USED.



DETAIL "A"

(TYP. AT EACH BRIDGE SEAT)

REINFORCING NOT SHOWN IN WING FOR CLARITY. FOR DETAILS, SEE SHEET 3 OF 4.



STV ENGINEERS, INC.
100 900 West Trade St., Suite 715
Charlotte, NC 28202
NC License Number F-0991

PROJECT NO. **B-5810**
CABARRUS COUNTY
STATION: **23+17.00 -L-**
SHEET 1 OF 4

| | | | | | |
|--|-----|-------|-----|-----|-----------------|
| STATE OF NORTH CAROLINA DEPARTMENT OF TRANSPORTATION RALEIGH | | | | | |
| END BENT 1 | | | | | |
| REVISIONS | | | | | SHEET NO. |
| NO. | BY: | DATE: | NO. | BY: | DATE: |
| 1 | | | 3 | | |
| 2 | | | 4 | | |
| | | | | | S-27 |
| | | | | | TOTAL SHEETS 36 |

DOCUMENT NOT CONSIDERED FINAL UNLESS ALL SIGNATURES COMPLETED

ASSEMBLED BY : LGH DATE : 6-19
CHECKED BY : MLO DATE : 12-19
DESIGN ENGINEER OF RECORD : J. GRISCOM DATE : 1-22