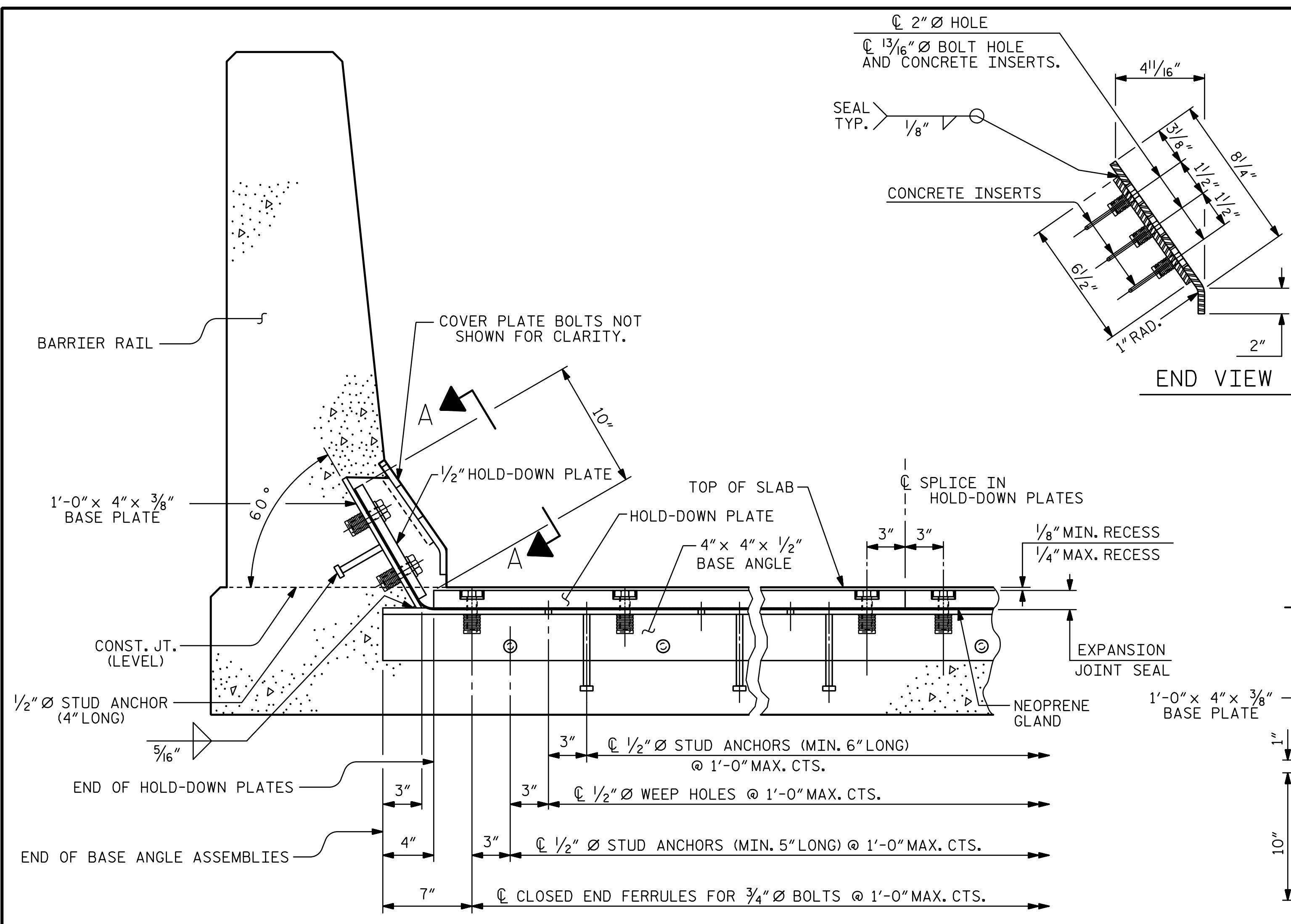
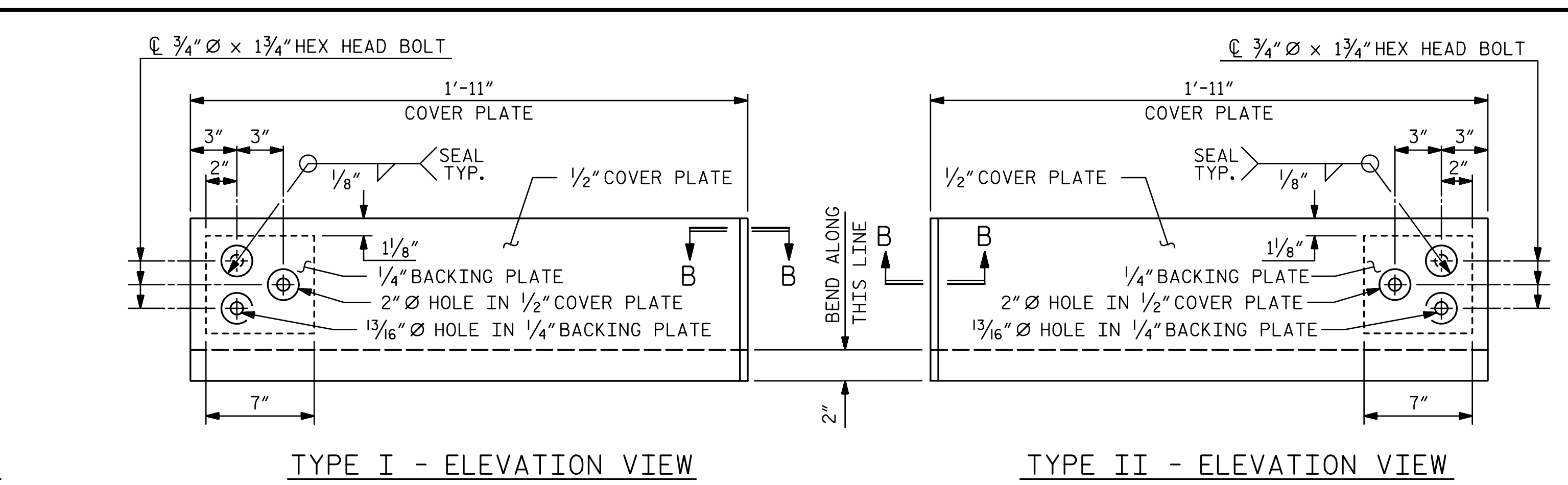


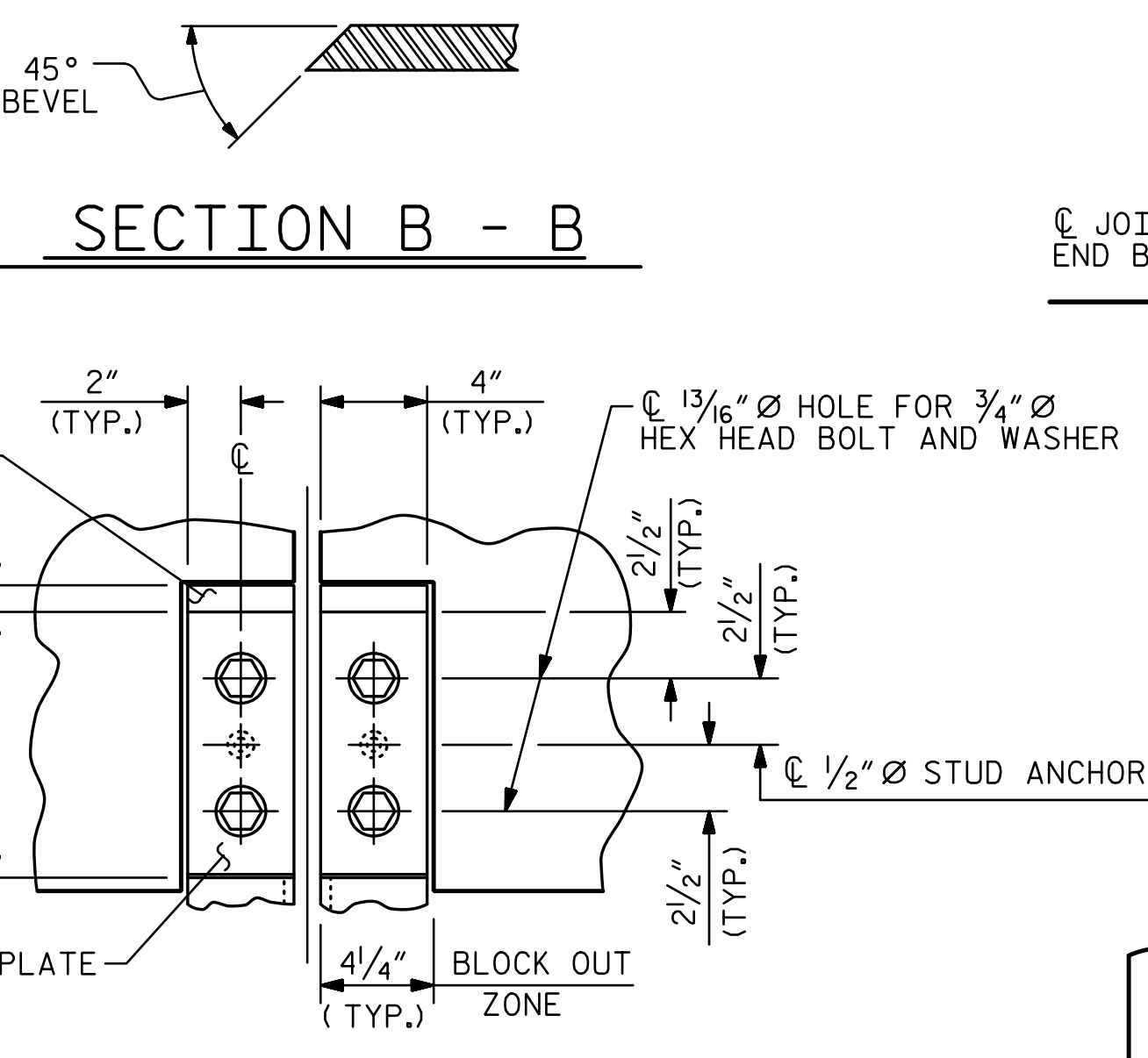
1/16/2022 4:51:40 PM R:\Structures\Station\Finals\401_047_B5810_SMU_EJ.2_024_120022.dgn



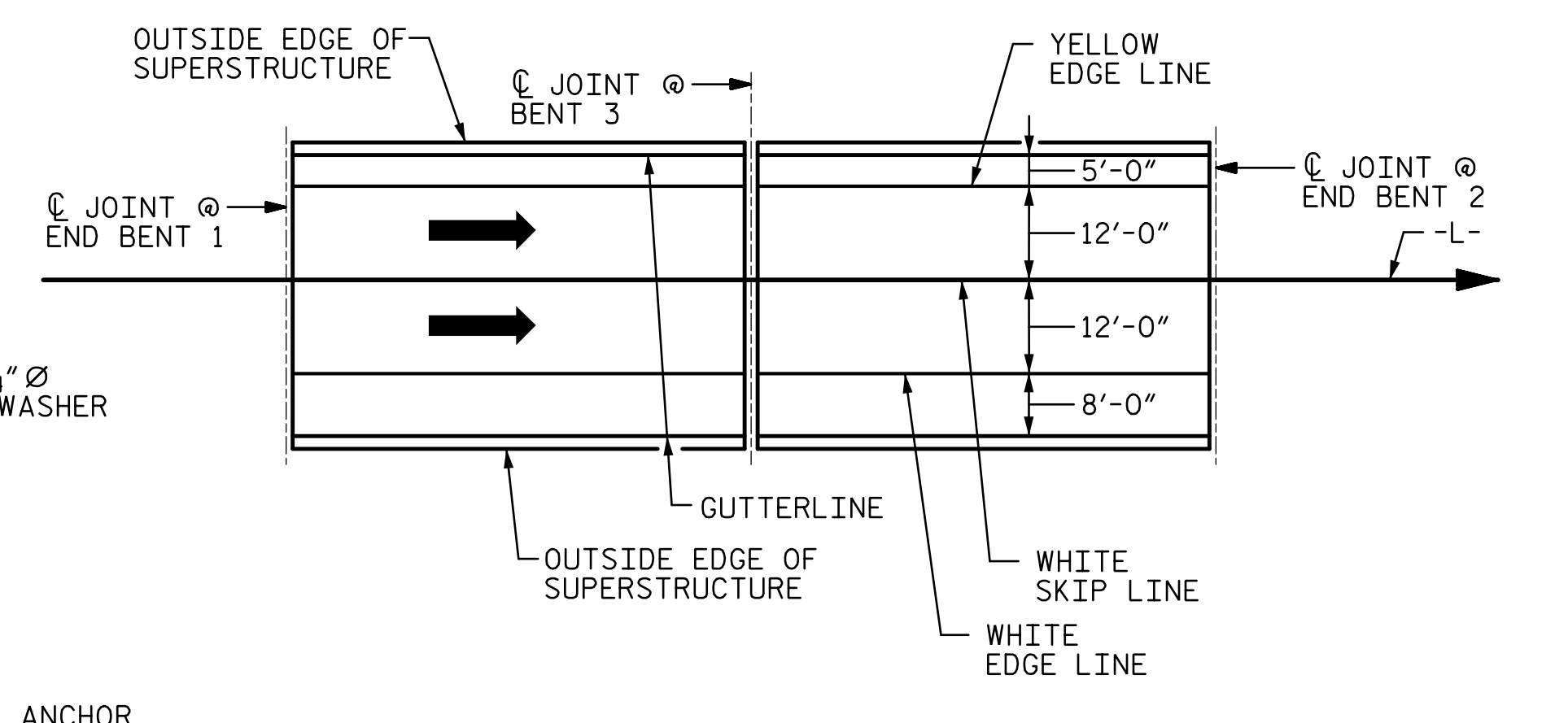
SECTION THRU RAIL NORMAL TO JOINT



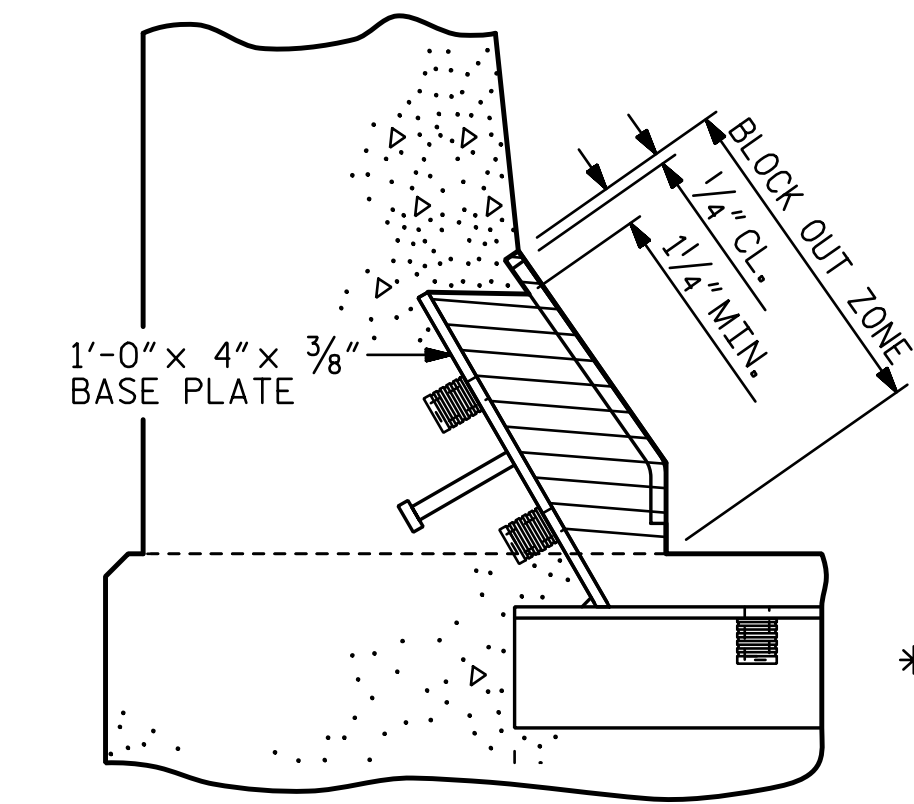
COVER PLATE DETAILS



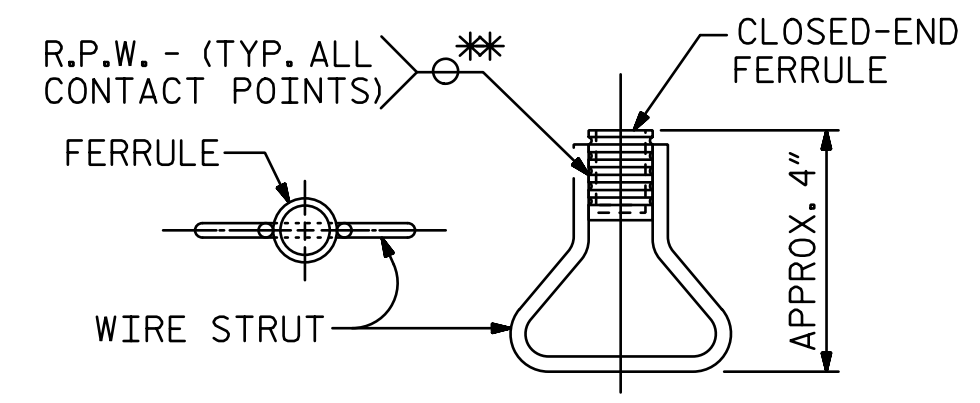
SECTION A-A



PAVEMENT MARKING ALIGNMENT



BLOCK OUT DETAIL
SEE "SECTION A-A" FOR OTHER DETAILS

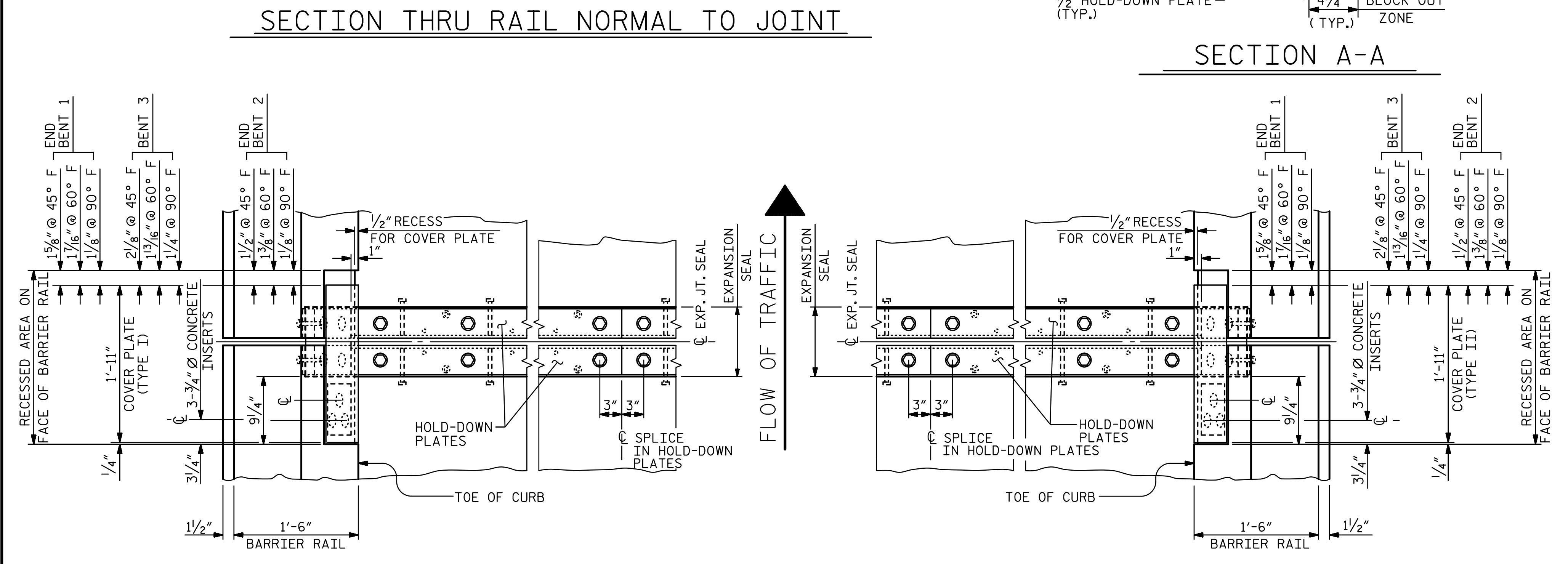


CONCRETE INSERT

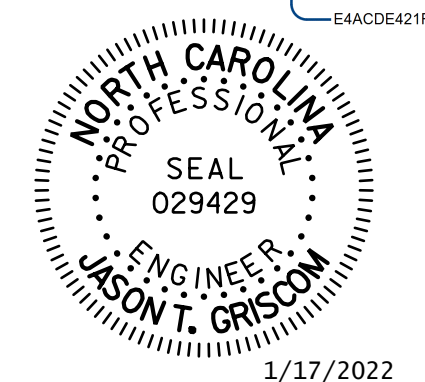
* EACH WELDED ATTACHMENT OF WIRE TO FERRULE SHALL DEVELOP THE TENSILE STRENGTH OF THE WIRE.

PROJECT NO. **B-5810**
CABARRUS COUNTY
 STATION: **23+17.00 -L-**

SHEET 2 OF 2



PLAN OF EXPANSION JOINT SEAL



STV ENGINEERS, INC.
 100 900 West Trade St., Suite 715
 Charlotte, NC 28202
 NC License Number F-0991

DOCUMENT NOT CONSIDERED
 FINAL UNLESS ALL
 SIGNATURES COMPLETED

ASSEMBLED BY : **LGH** DATE : **6-19**
 CHECKED BY : **MLO** DATE : **12-19**
 DESIGN ENGINEER OF RECORD : **J. GRISCOM** DATE : **1-22**

REVISIONS					SHEET NO.
NO.	BY:	DATE:	NO.	BY:	DATE:
1			3		
2			4		

S-24
TOTAL SHEETS
36