

NOTES

THE BARRIER RAIL IN A CONTINUOUS UNIT SHALL NOT BE CAST UNTIL ALL SLAB CONCRETE IN THAT UNIT HAS BEEN CAST AND HAS REACHED A MINIMUM COMPRESSIVE STRENGTH OF 3,000 PSI.

ALL REINFORCING STEEL IN BARRIER RAILS SHALL BE EPOXY COATED.

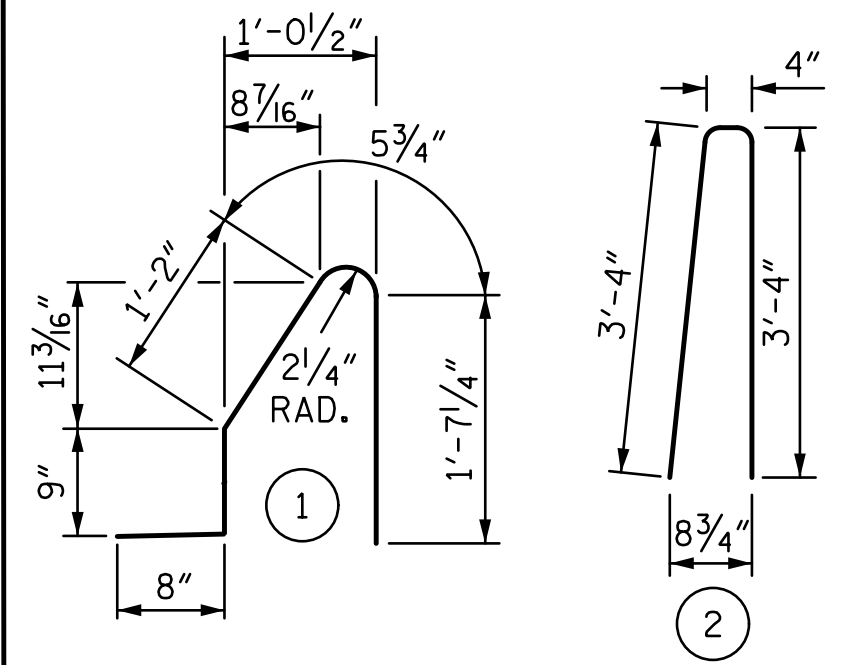
THE #5S1 AND #5S2 BARS MAY BE SHIFTED SLIGHTLY IN ORDER TO MAINTAIN A 2" MINIMUM CLEARANCE TO 1/2" EXPANSION JOINT MATERIAL IN THE BARRIER RAIL.

GROOVED CONTRACTION JOINTS, 1/2" IN DEPTH, SHALL BE TOOLED IN ALL EXPOSED FACES OF THE BARRIER RAIL AND IN ACCORDANCE WITH ARTICLE 825-10(B) OF THE STANDARD SPECIFICATIONS. THE CONTRACTION JOINT SHALL BE LOCATED AT EACH THIRD POINT BETWEEN BARRIER RAIL EXPANSION JOINTS. ONLY ONE CONTRACTION JOINT IS REQUIRED AT MIDPOINT OF BARRIER RAIL SEGMENTS LESS THAN 20 FEET IN LENGTH AND NO CONTRACTION JOINTS ARE REQUIRED FOR THOSE SEGMENTS LESS THAN 10 FEET IN LENGTH.

FOR CONCRETE BARRIER RAIL ON APPROACH SLAB, SEE "BRIDGE APPROACH SLAB DETAILS" SHEETS.

U.N.O. - UNLESS NOTED OTHERWISE

BAR TYPES



ALL BAR DIMENSIONS ARE OUT TO OUT.

BILL OF MATERIAL

FOR CONCRETE BARRIER RAIL ONLY

BAR	NO.	SIZE	TYPE	LENGTH	WEIGHT
* B17	330	#5	STR	23'-3"	8002
* B18	22	#5	STR	22'-3"	511
* B19	110	#5	STR	22'-11"	2629
* B20	22	#5	STR	21'-10"	501
* S1	1036	#5	1	4'-8"	5043
* S2	1036	#5	2	7'-0"	7564

* EPOXY COATED REINFORCING STEEL 24,250 LBS.

CLASS AA CONCRETE 140.7 CU. YDS.

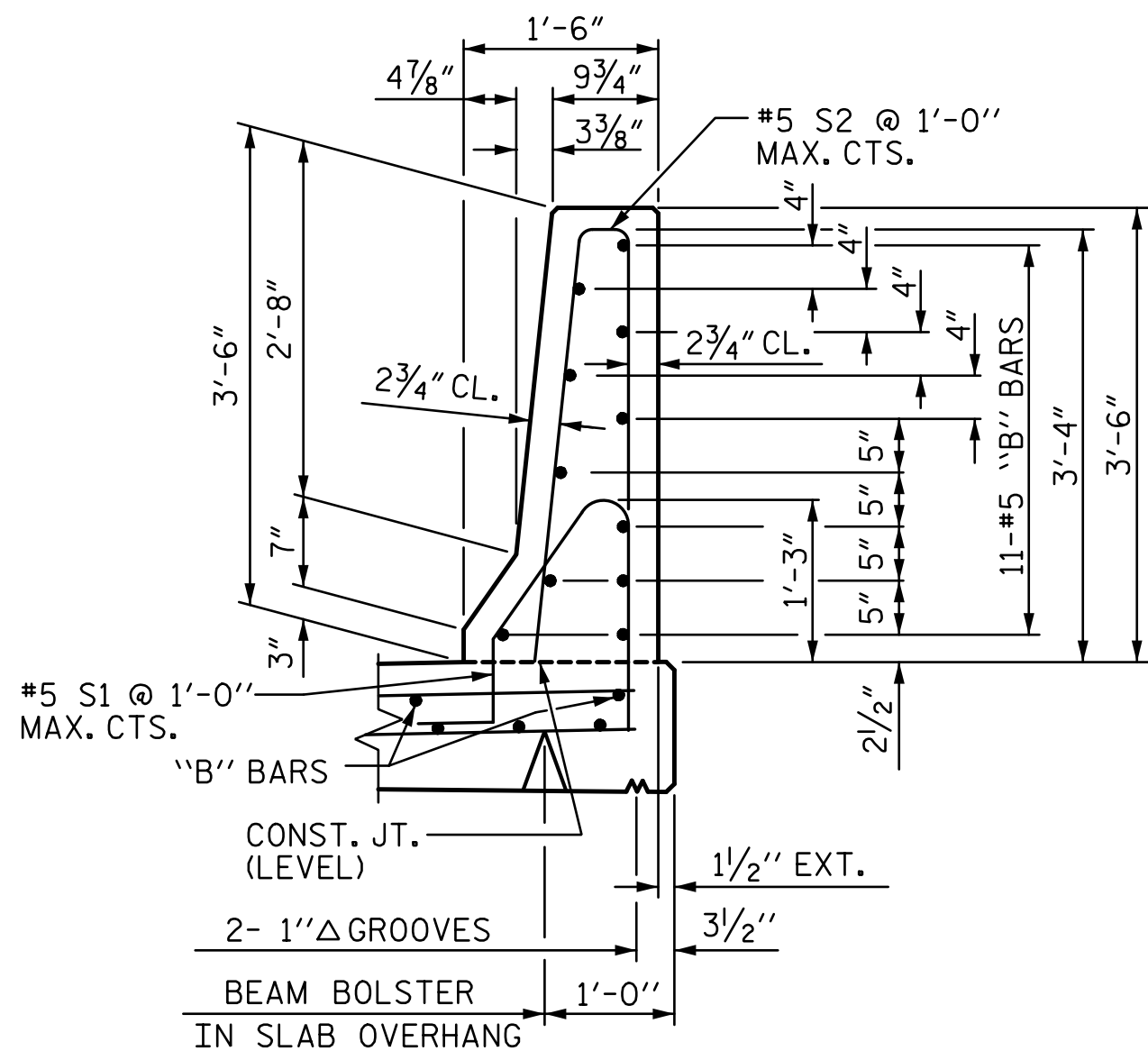
CONCRETE BARRIER RAIL

SUPERSTRUCTURE 1035.2 LIN. FT.

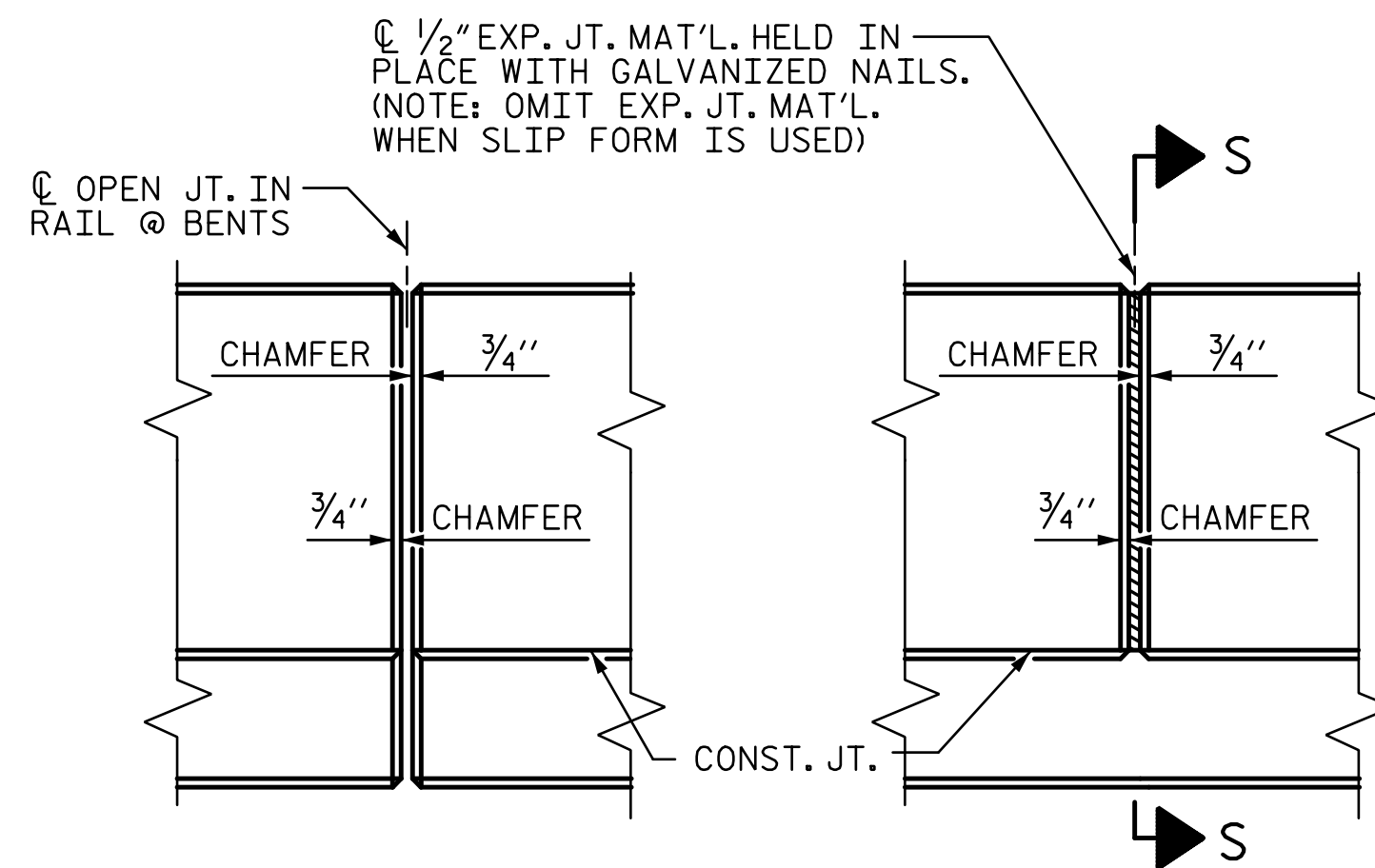
• APPROACH SLABS 40.0 LIN. FT.

TOTAL 1075.2 LIN. FT.

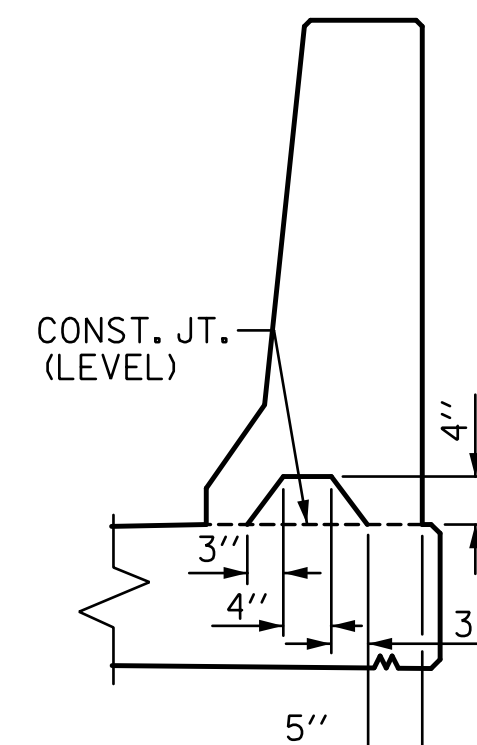
• FOR EPOXY COATED REINFORCING STEEL AND CLASS AA CONCRETE IN THE BARRIER RAIL ON THE APPROACH SLABS, SEE "BRIDGE APPROACH SLAB DETAILS" SHEET.



SECTION THRU RAIL



ELEVATION AT EXPANSION JOINTS

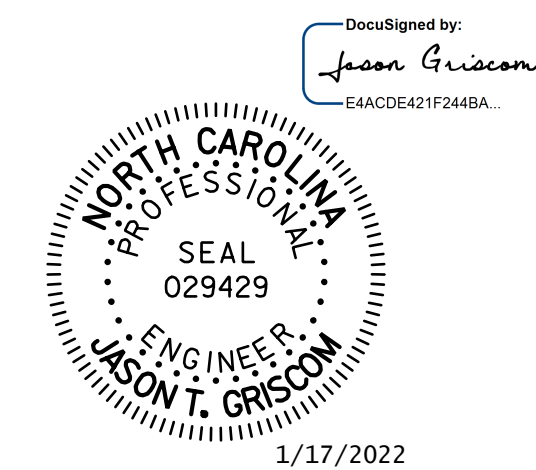


SECTION S-S
AT DAM IN OPEN JOINT
(THIS IS TO BE USED ONLY WHEN SLIP FORM IS USED)

BARRIER RAIL DETAILS

R:\Structures\Station\Finals\401_039_B5810_SMU_BRI_020_120022.dgn 4:51:17 PM 1/16/2022 igr\sc.com

ASSEMBLED BY :	LGH	DATE :	6-19
CHECKED BY :	MLO	DATE :	12-19
DESIGN ENGINEER OF RECORD :	J. GRISCOM	DATE :	1-22



STV 100 YEARS
STV ENGINEERS, INC.
900 West Trade St., Suite 715
Charlotte, NC 28202
NC License Number F-0991

DOCUMENT NOT CONSIDERED
FINAL UNLESS ALL
SIGNATURES COMPLETED

PROJECT NO. B-5810

CABARRUS COUNTY

STATION: 23+17.00 -L-

SHEET 1 OF 2

STATE OF NORTH CAROLINA
DEPARTMENT OF TRANSPORTATION
RALEIGH

CONCRETE BARRIER RAIL

REVISIONS				SHEET NO.	
NO.	BY:	DATE:	NO.	BY:	DATE:
1			3		
2			4		

S-20
TOTAL SHEETS 36