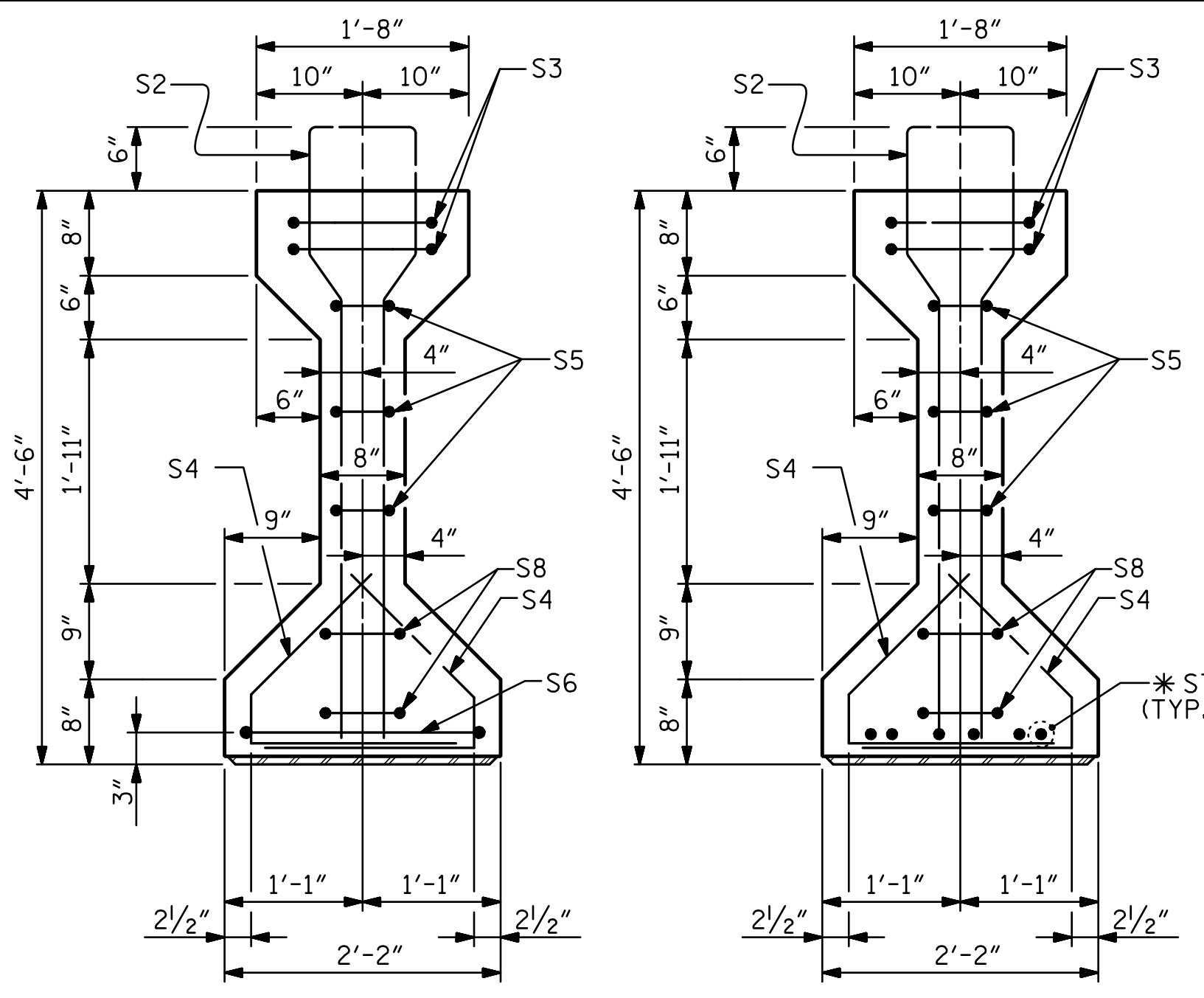


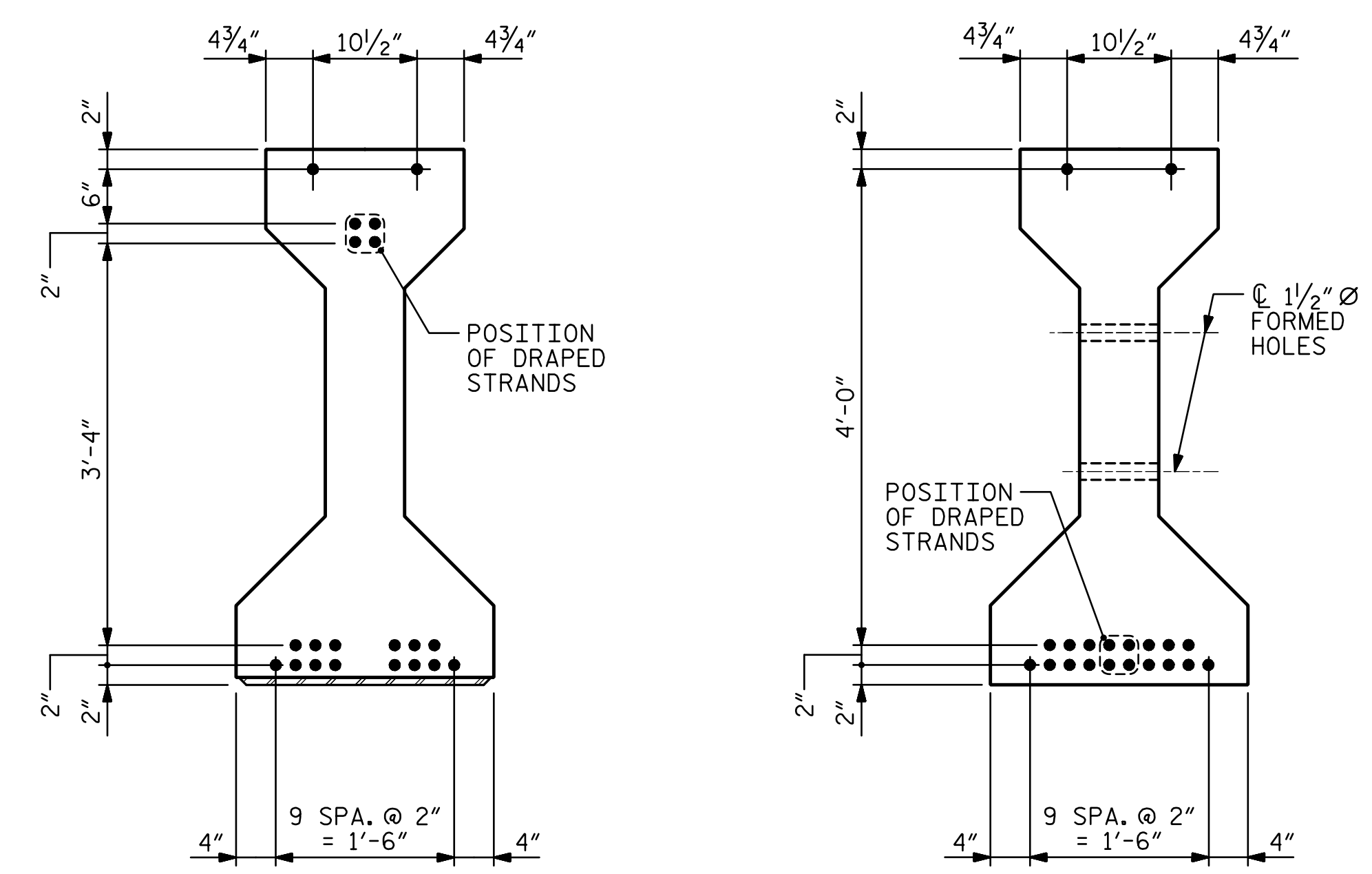
R:\Structures\Station\Finals\401_029_B5810_SMU_C2_015_I20022.dgn 4:50:52 PM 1/16/2022



SECTION A-A

SECTION B-B

*FOR S7 BARS SEE
DETAIL "A" OF "PRESTRESSED
CONCRETE GIRDER CONTINUOUS
FOR LIVE LOAD DETAILS" SHEET



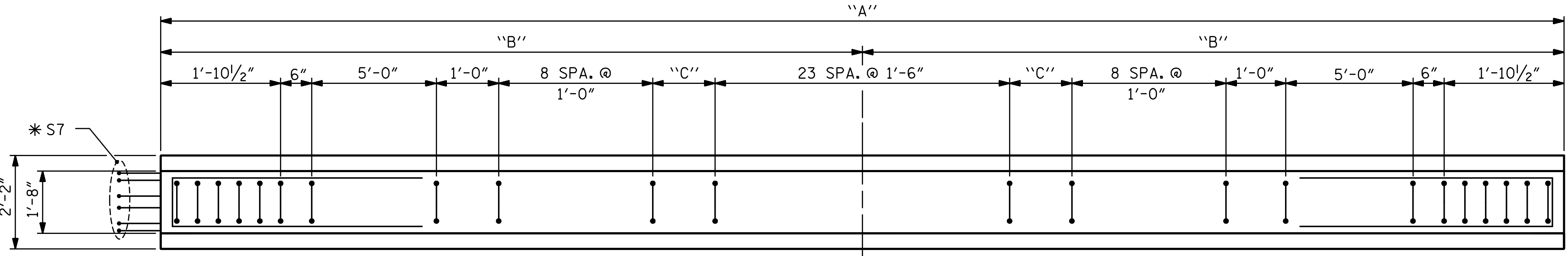
AT END OF GIRDER

AT C OF GIRDER

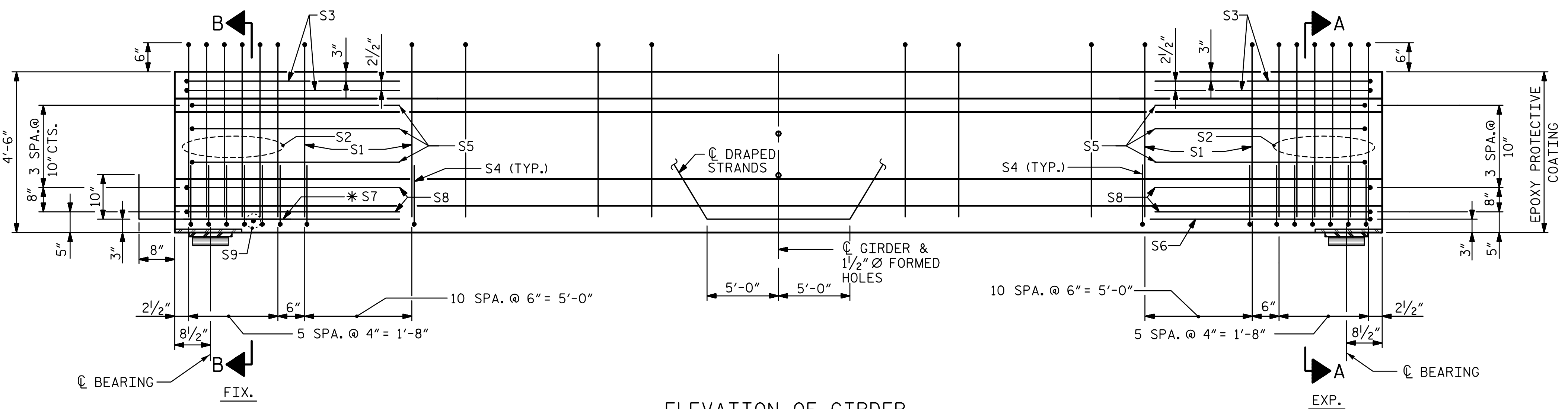
0.6" Ø LOW RELAXATION STRAND LAYOUT

DIMENSION	SPAN E	SPAN F
"A"	69'-2"	68'-3"
"B"	34'-7"	34'-1 1/2"
"C"	11 1/2"	6"

THE UPLIFT FORCE DUE TO DRAPED STRANDS IS 21 KIPS.



PLAN OF GIRDER



ELEVATION OF GIRDER

(FOR ADDITIONAL "S" BARS AT INTERMEDIATE DIAPHRAGM, SEE PARTIAL ELEVATION ON "PRESTRESSED CONCRETE GIRDER CONTINUOUS FOR LIVE LOAD DETAILS" SHEET)

0.6" Ø L. R. GRADE 270 STRANDS		
AREA (SQ. INCHES)	ULTIMATE STRENGTH (LBS. PER STRAND)	APPLIED PRESTRESS (LBS. PER STRAND)
0.217	58,600	43,950

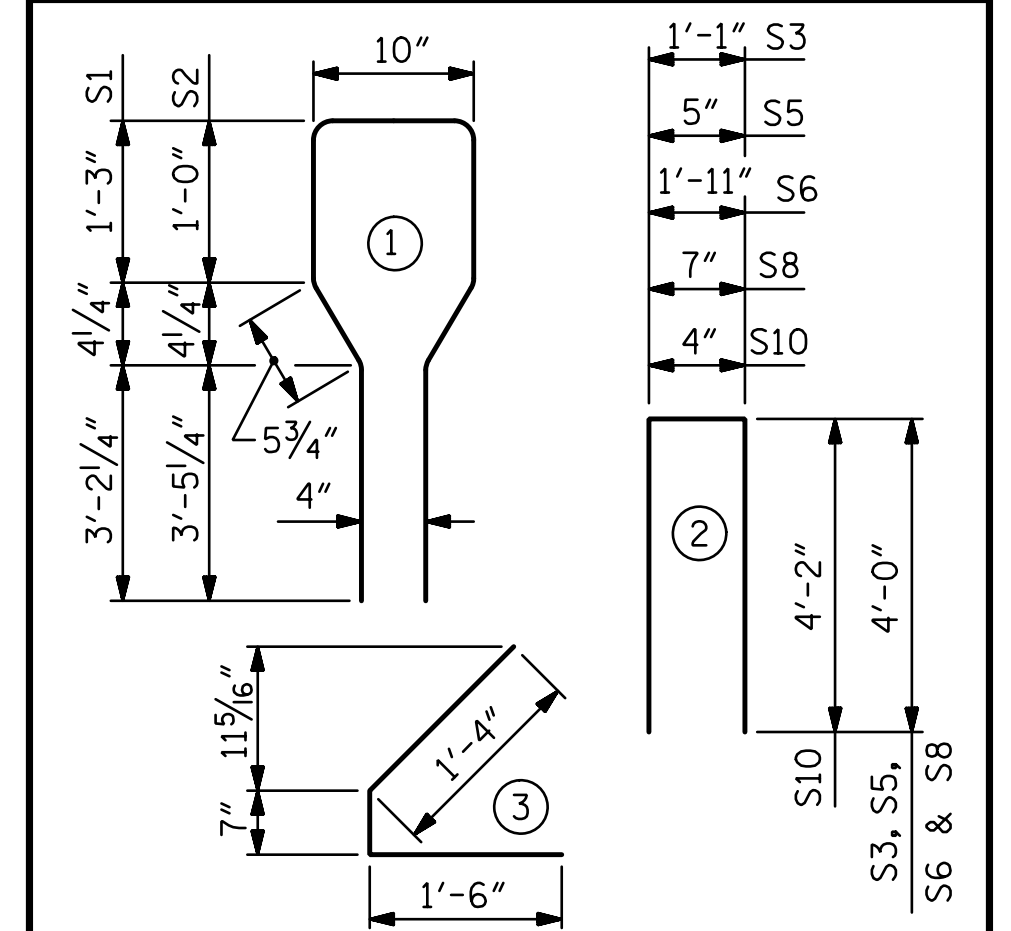
REINFORCING STEEL FOR ONE GIRDER

BAR	NUMBER	SIZE	TYPE	LENGTH	WEIGHT	
S1	64	#4	1	10'-8"	456	
S2	12	#6	1	10'-8"	192	
S3	4	#4	2	9'-1"	24	
S4	68	#4	3	3'-5"	155	
S5	6	#4	2	8'-5"	34	
SPAN F	S6	1	#4	2	9'-11"	7
SPAN E	*S7	12	#5	STR	3'-8"	46
SPAN F	*S7	6	#5	STR	3'-8"	23
	S8	4	#4	2	8'-7"	23
SPAN E	S9	2	#3	STR	1'-10"	1
SPAN F	S9	1	#3	STR	1'-10"	1
	S10	2	#5	2	8'-8"	18
	S11	5	#4	STR	7'-0"	23

*NOTE: S7 BARS SHALL BE BENT BEFORE SHIPMENT. HEAT BENDING SHALL NOT BE ALLOWED.

BAR TYPES

ALL BAR DIMENSIONS ARE OUT-TO-OUT



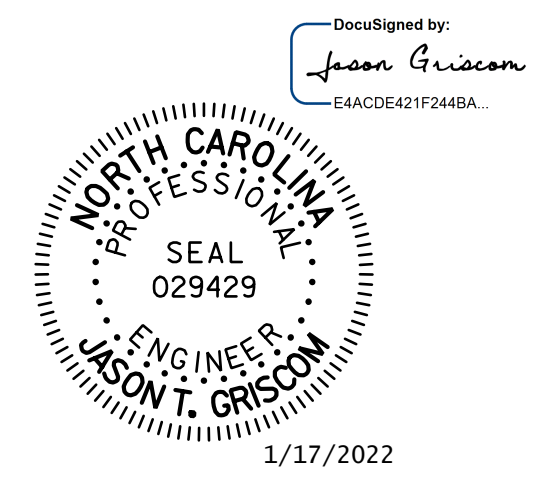
QUANTITIES FOR ONE GIRDER

	REINFORCING STEEL	9000 PSI CONCRETE	0.6" Ø L. R. STRANDS
	LB.	C.Y.	No.
SPAN E	972	14.0	20
SPAN F	956	13.9	20

GIRDERS REQUIRED

NUMBER	LENGTH	TOTAL LENGTH
SPAN E	4	69'-2"
SPAN F	4	68'-3"

PROJECT NO. B-5810
CABARRUS COUNTY
 STATION: 23+17.00 -L-



STV ENGINEERS, INC.
 900 West Trade St., Suite 715
 Charlotte, NC 28202
 NC License Number F-0991

DOCUMENT NOT CONSIDERED FINAL UNLESS ALL SIGNATURES COMPLETED

STATE OF NORTH CAROLINA DEPARTMENT OF TRANSPORTATION RALEIGH					SHEET NO.
AASHTO TYPE IV PRESTRESSED CONCRETE GIRDER CONTINUOUS FOR LIVE LOAD SPANS E & F					S-15
REVISIONS					TOTAL SHEETS
NO.	BY:	DATE:	NO.	BY:	DATE:
1			3		
2			4		
					36

ASSEMBLED BY :	LGH	DATE :	6-19
CHECKED BY :	MLO	DATE :	12-19
DESIGN ENGINEER OF RECORD :	J. GRISCOM	DATE :	1-22