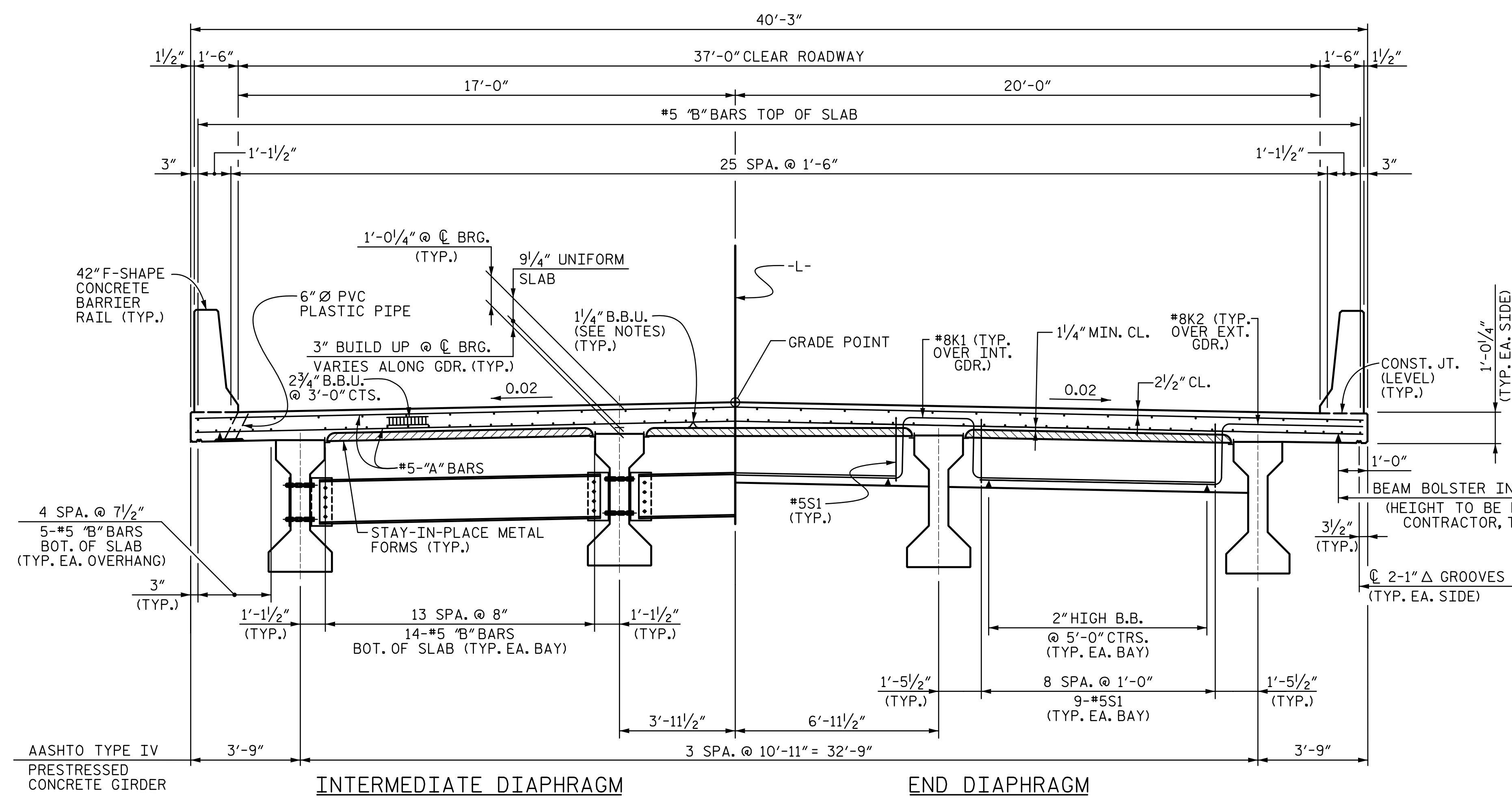
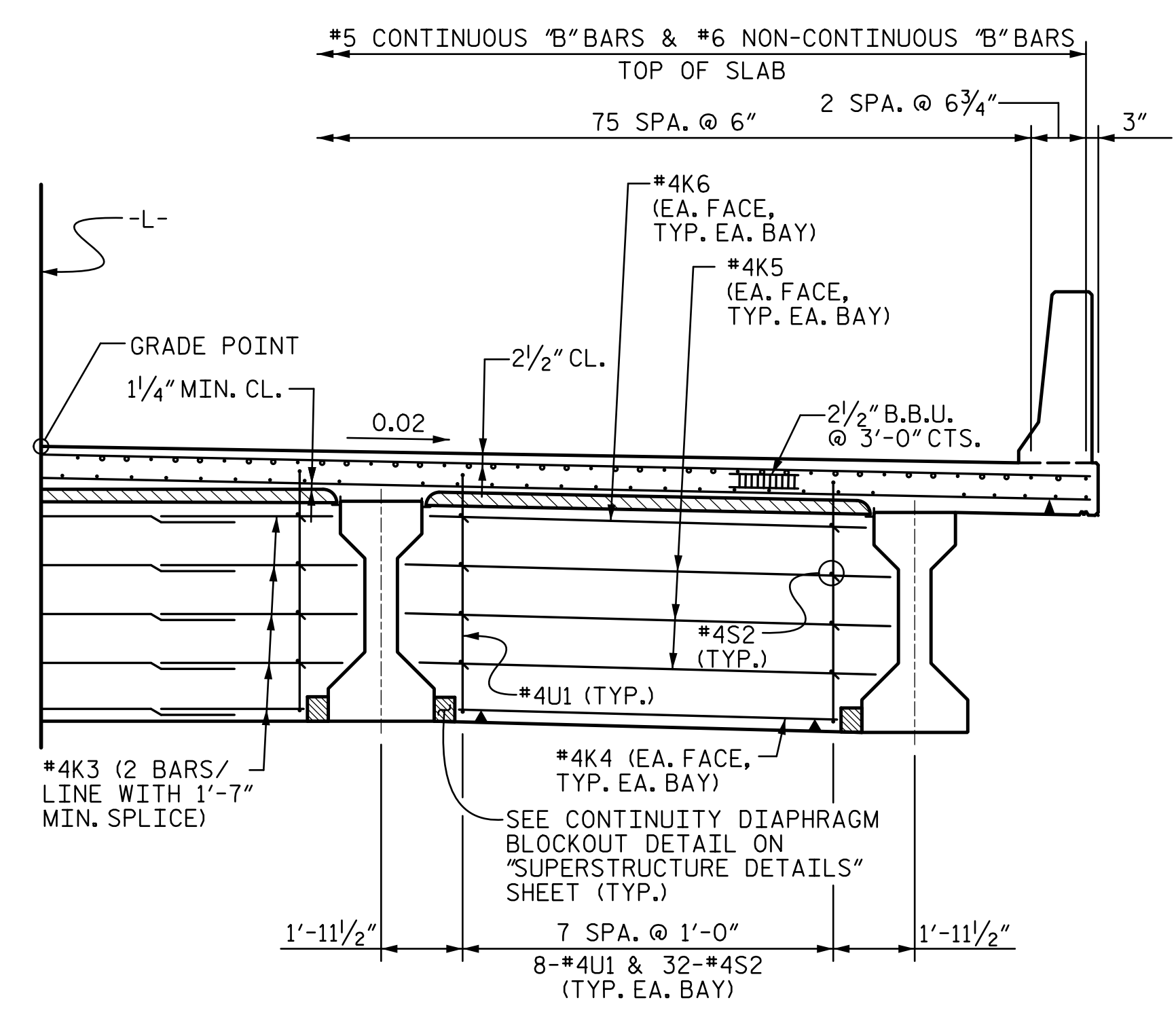


R:\Structures\Station\Final\401_OIL_B5810_SMU_TS_006_120022.dgn 1/16/2022 4:50:00 PM jgr\scm



TYPICAL SECTION
INTERMEDIATE DIAPHRAGM END DIAPHRAGM



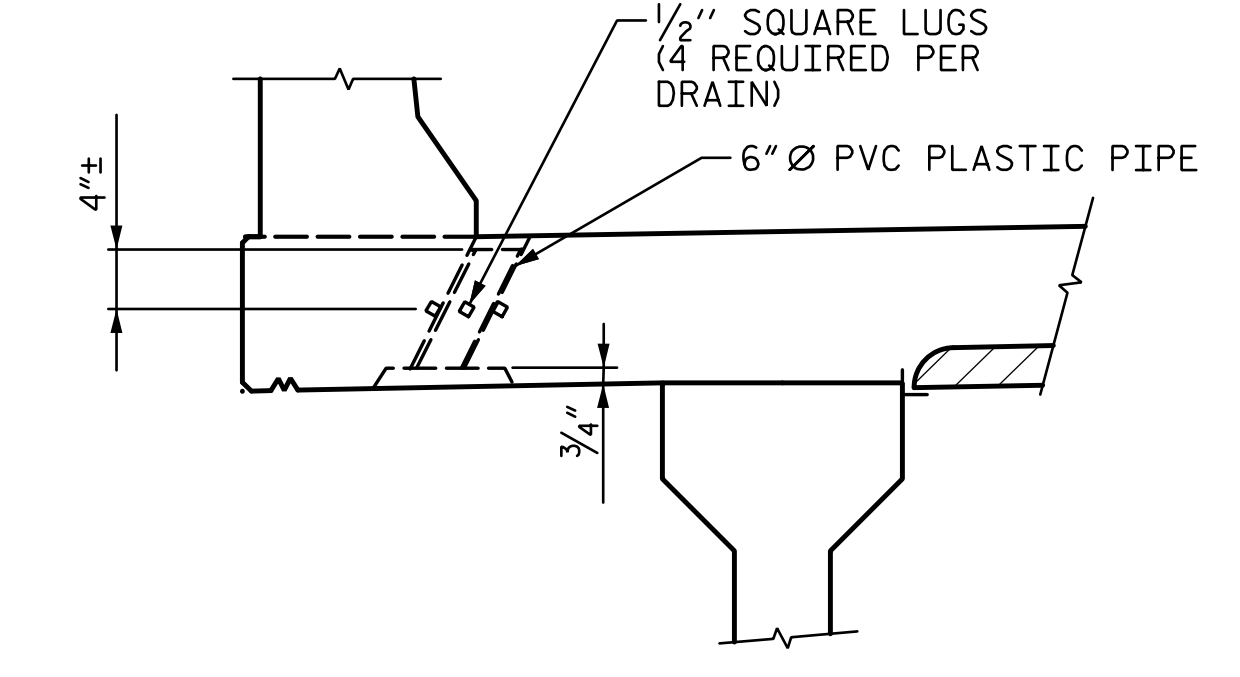
TYPICAL SECTION - CONTINUITY DIAPHRAGM

SEE "TYPICAL SECTION" FOR ALL DIMENSIONS AND DETAILS NOT SHOWN IN THIS SECTION.

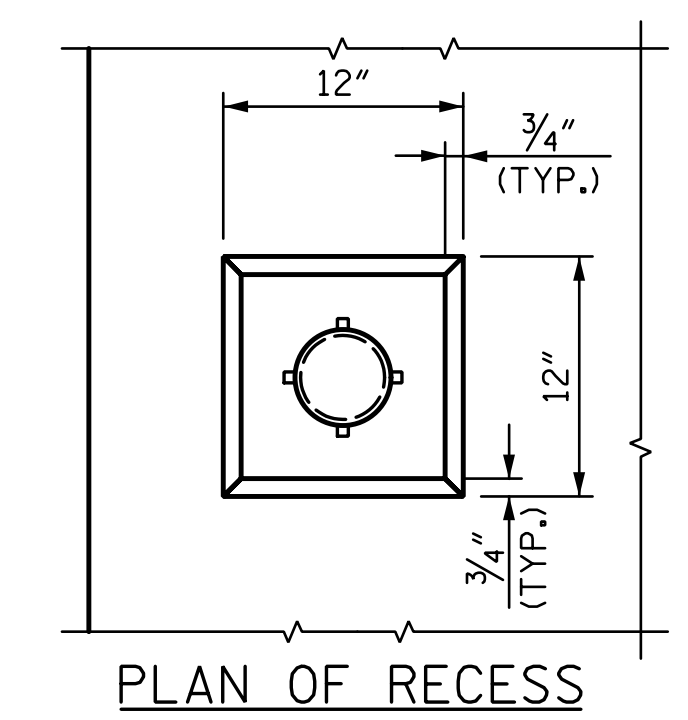
● CONTINUOUS BAR LINE
○ NON-CONTINUOUS BAR LINE (DROP-IN BAR)

TYPICAL SECTION NOTES:

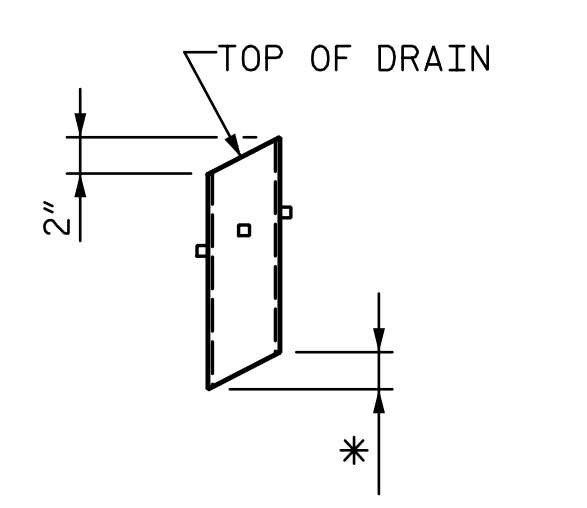
- PROVIDE 1/4" HIGH BEAM BOLSTERS UPPER AT 4'-0" CTS. ATOP THE METAL STAY-IN-PLACE FORMS TO SUPPORT THE BOTTOM MAT OF "A" BARS.
- LONGITUDINAL STEEL MAY BE SHIFTED SLIGHTLY, AS NECESSARY, TO AVOID INTERFERENCE WITH STIRRUPS IN PRESTRESSED CONCRETE GIRDERS AND DECK DRAINS.
- FOR INTERMEDIATE DIAPHRAGM DETAILS, SEE "INTERMEDIATE STEEL DIAPHRAGMS FOR AASHTO TYPE IV PRESTRESSED CONCRETE GIRDERS" SHEET.
- CONCRETE BARRIER RAIL SHALL NOT BE CAST UNTIL ALL SLAB CONCRETE HAS BEEN CAST AND HAS REACHED A MINIMUM COMPRESSIVE STRENGTH OF 3,000 PSI.
- FOR CONCRETE BARRIER RAIL DETAILS, SEE "CONCRETE BARRIER RAIL" SHEETS.
- FOR "B" BAR MARKS AND LOCATIONS, SEE "PLAN OF SPANS" SHEETS.
- FOR END DIAPHRAGM AND CONTINUITY DIAPHRAGM SECTIONS, SEE "SUPERSTRUCTURE DETAILS" SHEET.
- FOR DECK DRAIN LOCATIONS, SEE "PLAN OF SPANS" SHEETS.



ELEVATION



PLAN OF RECESS

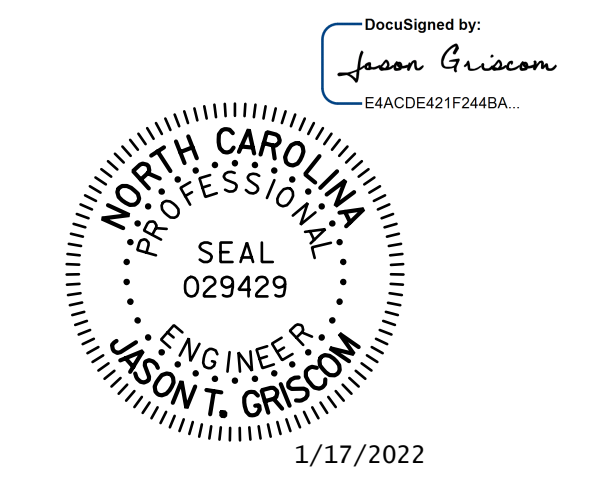


PIPE DETAIL

DECK DRAIN DETAILS

- NOTES:
- TOP OF FLOOR DRAINS TO BE SET 3/8" BELOW SURFACE OF SLAB.
 - 4 - 1/2" SQUARE LUGS TO BE GLUED TO THE P.V.C. PLASTIC PIPE AT EQUAL SPACES AROUND THE PIPE DRAIN APPROXIMATELY 4" FROM THE TOP OF THE PIPE.
 - THE 6" Ø PVC PLASTIC PIPE AND FITTINGS SHALL BE SCHEDULE 40 AND CONFORM TO ASTM D1785.

PROJECT NO. B-5810
CABARRUS COUNTY
 STATION: 23+17.00 -L-



STATE OF NORTH CAROLINA
 DEPARTMENT OF TRANSPORTATION
 RALEIGH
TYPICAL SECTION

ASSEMBLED BY :	LGH	DATE :	6-19
CHECKED BY :	MLO	DATE :	12-19
DESIGN ENGINEER OF RECORD :	J. GRISCOM	DATE :	1-22

DOCUMENT NOT CONSIDERED FINAL UNLESS ALL SIGNATURES COMPLETED

REVISIONS				SHEET NO.
NO.	BY:	DATE:	NO.	DATE:
1			3	
2			4	

TOTAL SHEETS: 36