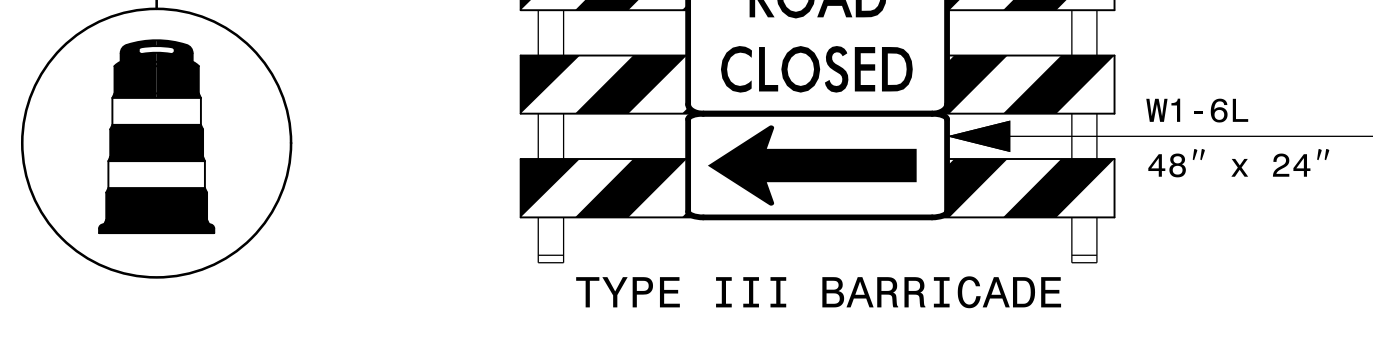
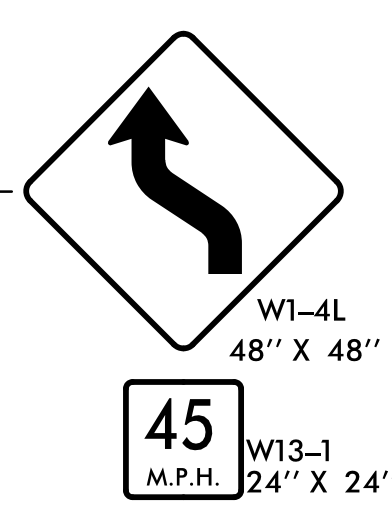
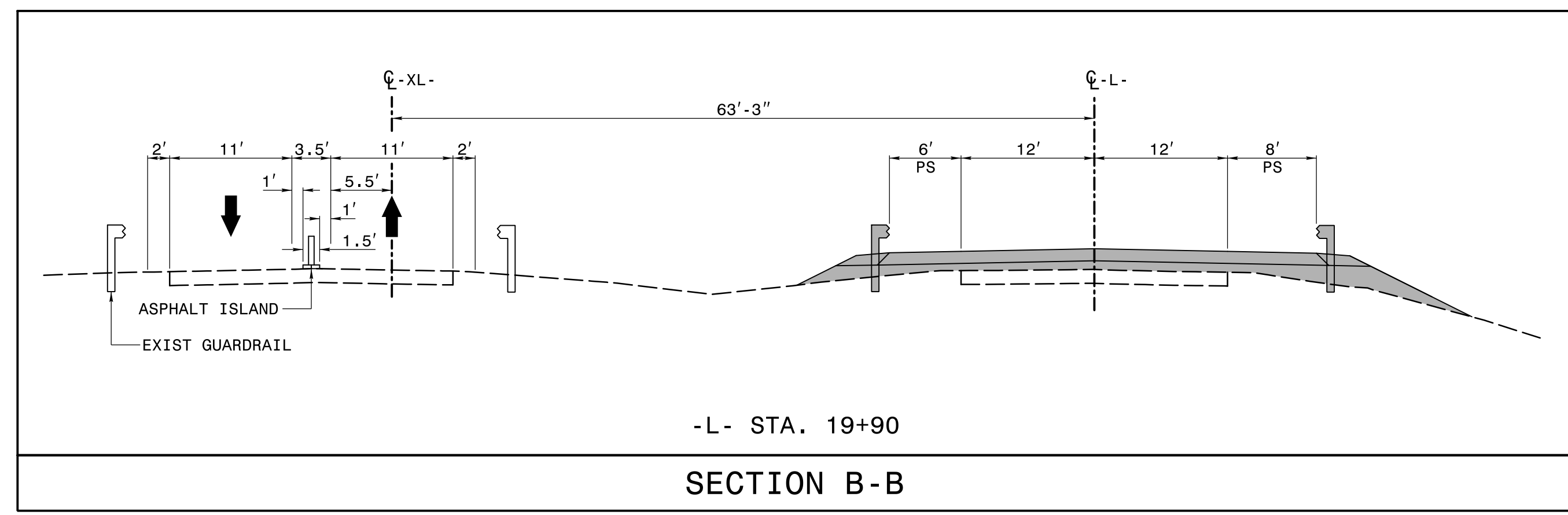


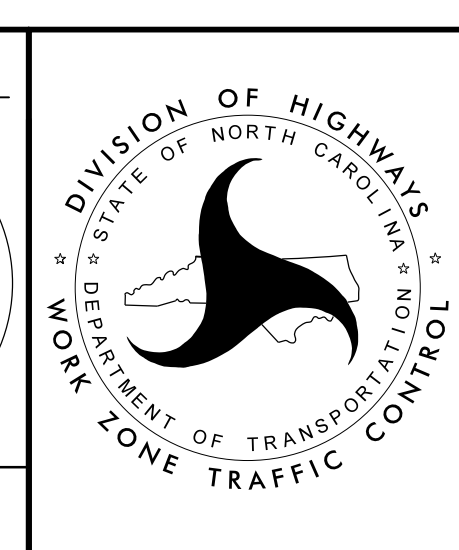
SEE ROADWAY STANDARD DRAWINGS 1101.03, SHEET 4 OF 9 FOR ADVANCE SIGNAGE AND TEMPORARY TRAFFIC CONTROL DEVICES. (L=660'; 55 MPH)



APPROVED: *[Signature]*
 DATE: 3/4/2022

SEAL

DOCUMENT NOT CONSIDERED FINAL UNLESS ALL SIGNATURES COMPLETED



TEMPORARY TRAFFIC CONTROL PHASE III DETAIL

3/4/2022 R:\TrafficControl\top\shp\B5810_rdy_tmp-09.dgn Moor-EDS