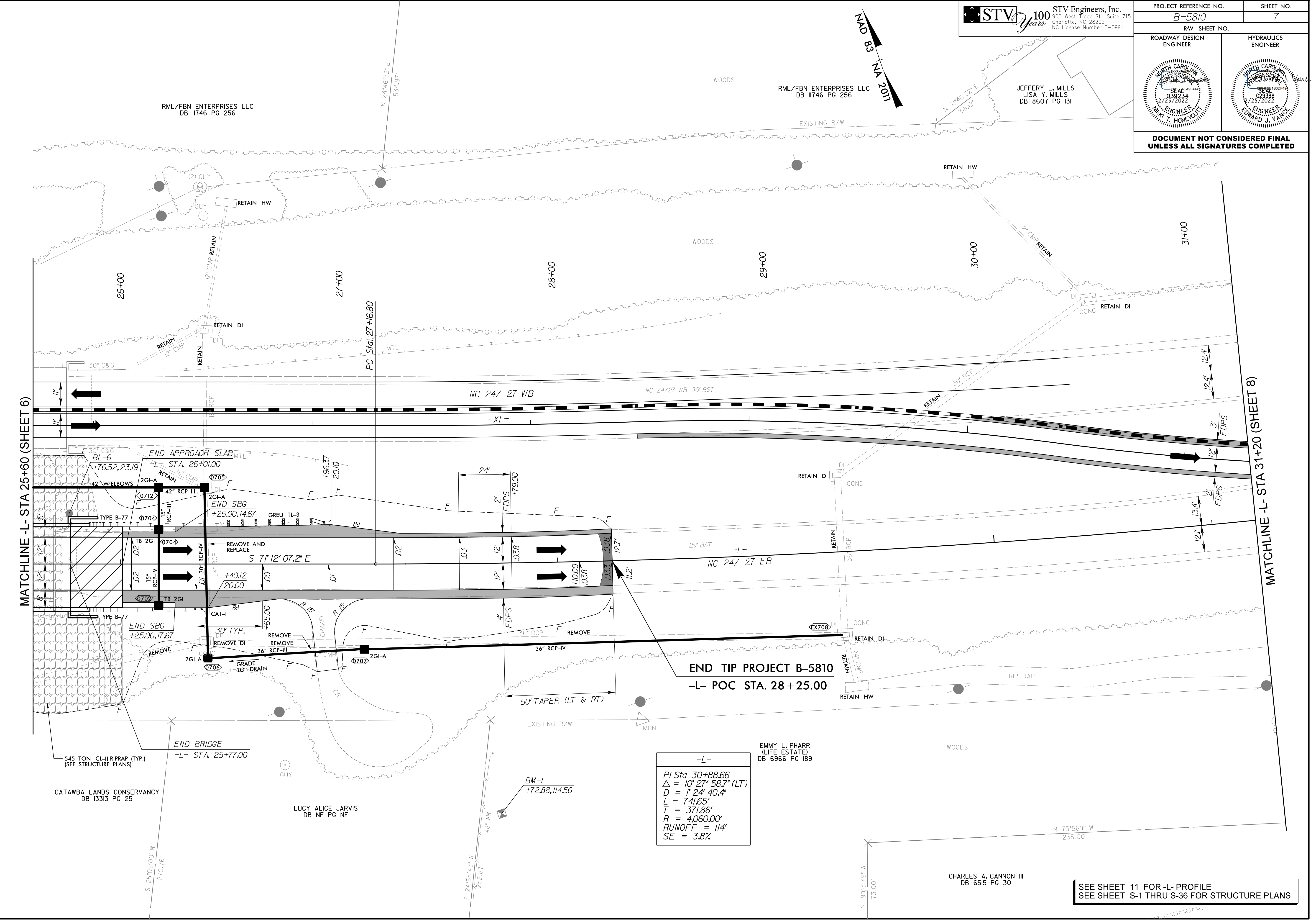


PROJECT REFERENCE NO. B-5810		SHEET NO. 7	
RW SHEET NO.		HYDRAULICS ENGINEER	
ROADWAY DESIGN ENGINEER			
DOCUMENT NOT CONSIDERED FINAL UNLESS ALL SIGNATURES COMPLETED			



-L-

PI Sta 30+88.66
 $\Delta = 10' 27" 58.7" (LT)$
 $D = 1' 24" 40.4"$
 $L = 74.65'$
 $T = 371.86'$
 $R = 4,060.00'$
 $RUNOFF = 114'$
 $SE = 3.8\%$

SEE SHEET 11 FOR -L- PROFILE
 SEE SHEET S-1 THRU S-36 FOR STRUCTURE PLANS

2/25/2022
 C:\projects\B5810\rdy_psh07.dgn

CATAWBA LANDS CONSERVANCY
 DB I3313 PG 25

LUCY ALICE JARVIS
 DB NF PG NF

EMMY L. PHARR
 (LIFE ESTATE)
 DB 6966 PG 189

CHARLES A. CANNON III
 DB 6515 PG 30