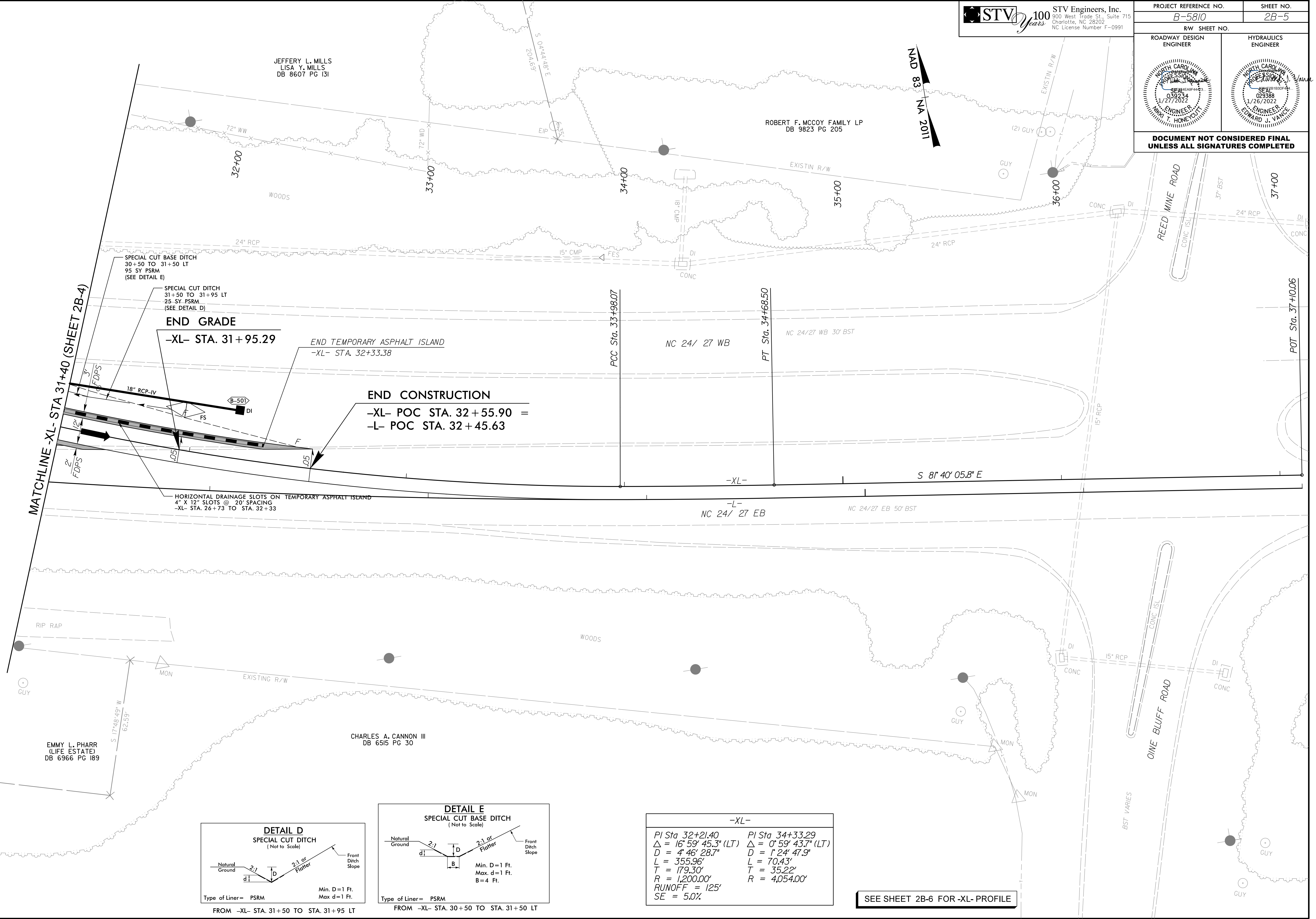


8/17/19

STV 100 Years
 STV Engineers, Inc.
 300 West Trade St., Suite 715
 Charlotte, NC 28202
 NC License Number F-0991

PROJECT REFERENCE NO. B-5810		SHEET NO. 2B-5	
RW SHEET NO.		HYDRAULICS ENGINEER	
ROADWAY DESIGN ENGINEER		HYDRAULICS ENGINEER	

DOCUMENT NOT CONSIDERED FINAL UNLESS ALL SIGNATURES COMPLETED



MATCHLINE -XL- STA 31+40 (SHEET 2B-4)

SPECIAL CUT BASE DITCH
30+50 TO 31+50 LT
95 SY PSRM
(SEE DETAIL E)

SPECIAL CUT DITCH
31+50 TO 31+95 LT
25 SY PSRM
(SEE DETAIL D)

END GRADE
-XL- STA. 31+95.29

END TEMPORARY ASPHALT ISLAND
-XL- STA. 32+33.38

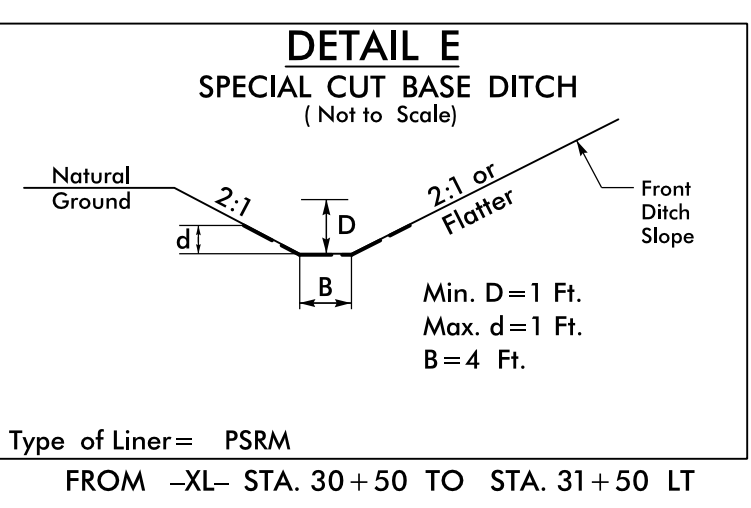
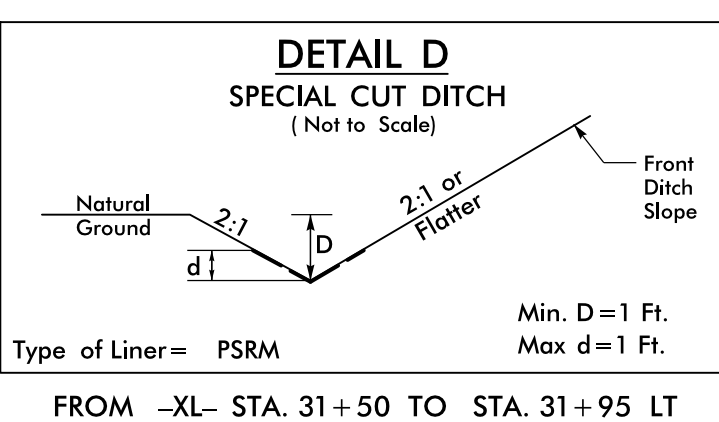
END CONSTRUCTION
-XL- POC STA. 32+55.90 =
-L- POC STA. 32+45.63

HORIZONTAL DRAINAGE SLOTS ON TEMPORARY ASPHALT ISLAND
4" X 12" SLOTS @ 20' SPACING
-XL- STA. 26+73 TO STA. 32+33

-XL-

PI Sta 32+21.40	PI Sta 34+33.29
$\Delta = 16' 59' 45.3" (LT)$	$\Delta = 0' 59' 43.7" (LT)$
$D = 4' 46' 28.7"$	$D = 1' 24' 47.9"$
$L = 355.96'$	$L = 70.43'$
$T = 179.30'$	$T = 35.22'$
$R = 1,200.00'$	$R = 4,054.00'$
RUNOFF = 125'	
SE = 5.0%	

SEE SHEET 2B-6 FOR -XL- PROFILE



1/26/2022
L:\26\2022\proj\sh\B5810_rdy_psh\2B-5.dgn