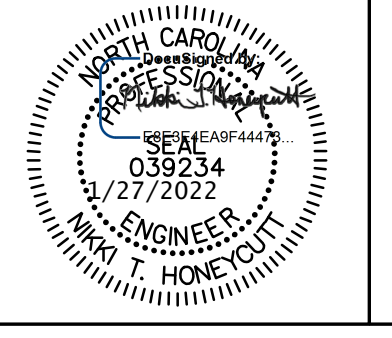
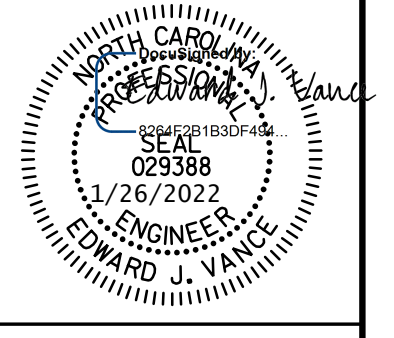
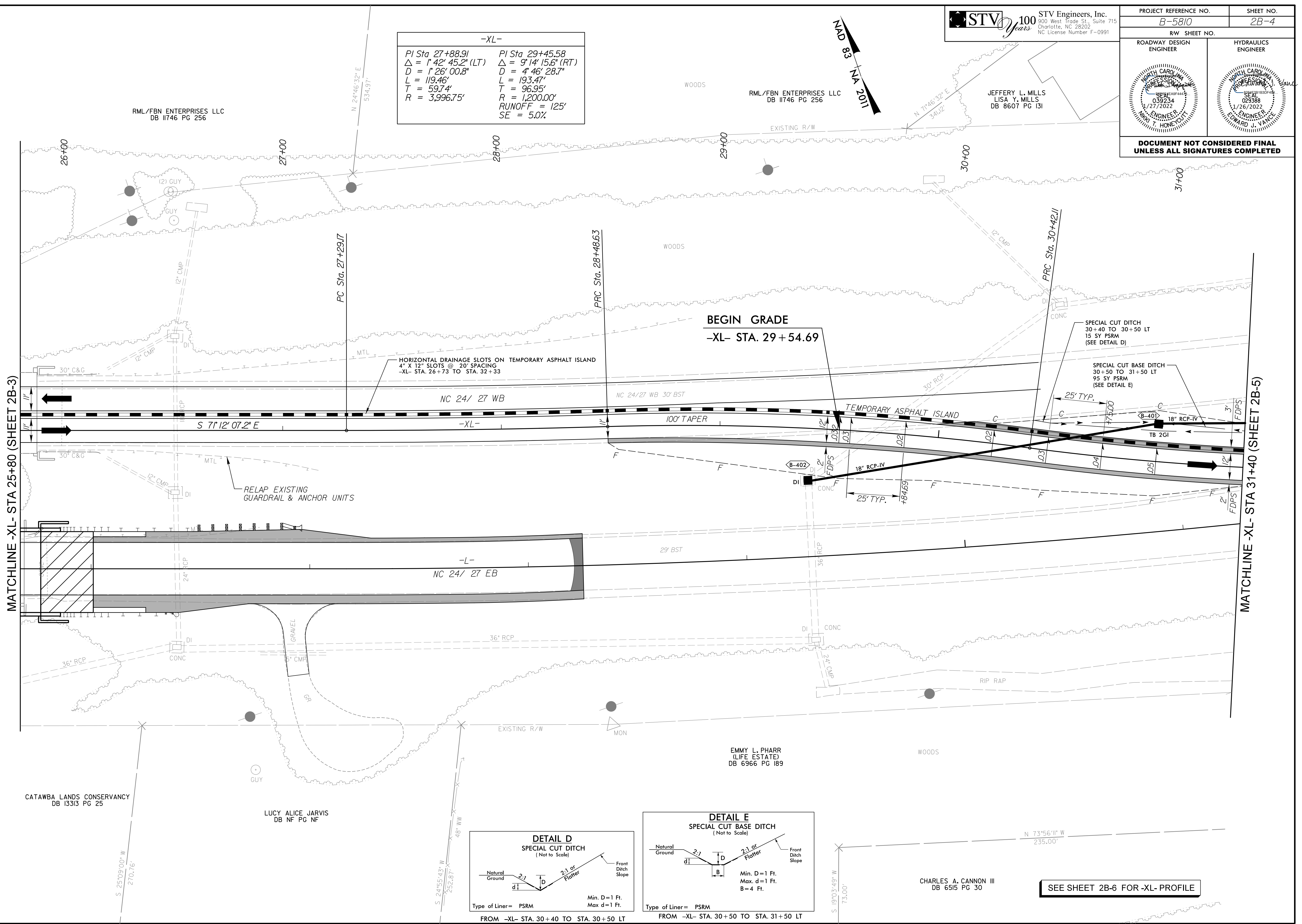


8/17/22

**STV** 100 Years  
 STV Engineers, Inc.  
 300 West Trade St., Suite 715  
 Charlotte, NC 28202  
 NC License Number F-0991

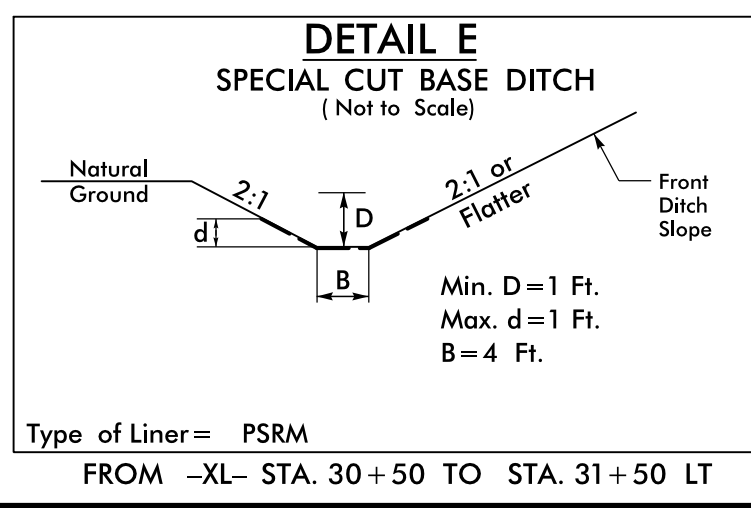
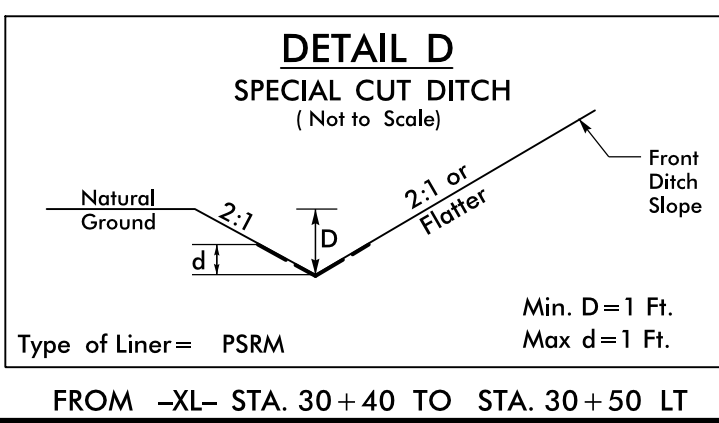
PROJECT REFERENCE NO. B-5810		SHEET NO. 2B-4	
RW SHEET NO.		HYDRAULICS ENGINEER	
ROADWAY DESIGN ENGINEER	JEFFERY L. MILLS LISA Y. MILLS DB 8607 PG 131		HYDRAULICS ENGINEER
			
<b>DOCUMENT NOT CONSIDERED FINAL UNLESS ALL SIGNATURES COMPLETED</b>			

-XL-	
PI Sta 27+88.91	PI Sta 29+45.58
$\Delta = 1^{\circ} 42' 45.2" (LT)$	$\Delta = 9^{\circ} 14' 15.6" (RT)$
$D = 1^{\circ} 26' 00.8"$	$D = 4^{\circ} 46' 28.7"$
$L = 119.46'$	$L = 193.47'$
$T = 59.74'$	$T = 96.95'$
$R = 3,996.75'$	$R = 1,200.00'$
	RUNOFF = 125'
	SE = 5.0%



MATCHLINE -XL- STA 25+80 (SHEET 2B-3)

MATCHLINE -XL- STA 31+40 (SHEET 2B-5)



SEE SHEET 2B-6 FOR -XL- PROFILE

1/26/2022  
I:\6\2022\proj\sh\B5810\_rdy\_psh\2B-4.dgn