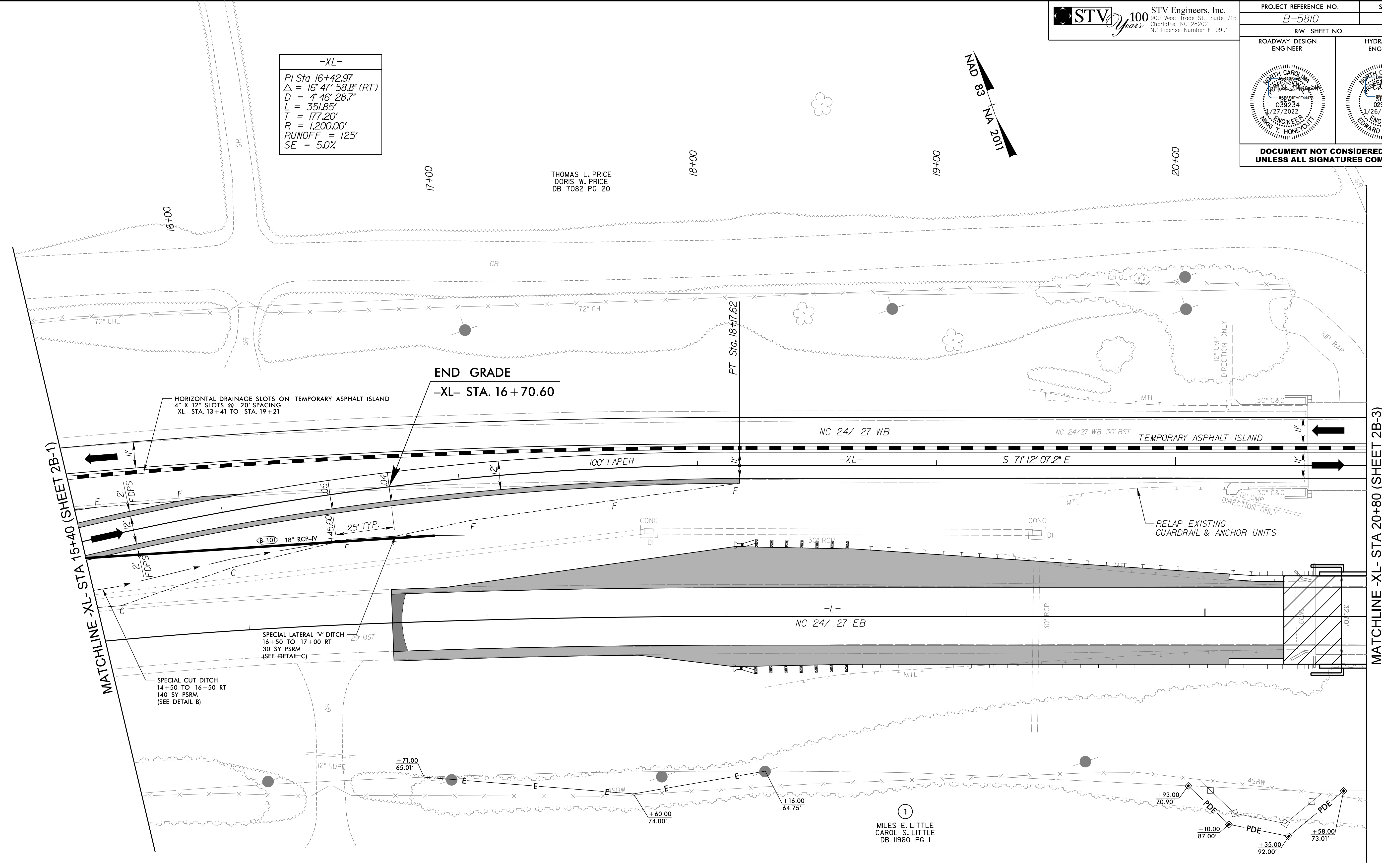
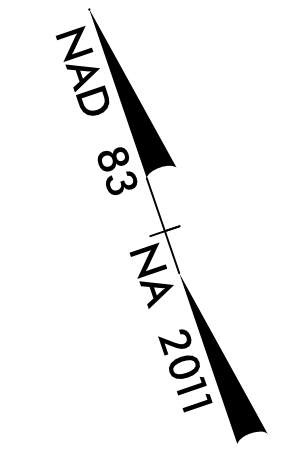


PROJECT REFERENCE NO. B-5810		SHEET NO. 2B-2
RW SHEET NO.		
ROADWAY DESIGN ENGINEER	HYDRAULICS ENGINEER	
DOCUMENT NOT CONSIDERED FINAL UNLESS ALL SIGNATURES COMPLETED		

-XL-

PI Sta 16+42.97
 $\Delta = 16^\circ 47' 58.8" (RT)$
 $D = 4' 46" 28.7"$
 $L = 351.85'$
 $T = 177.20'$
 $R = 1,200.00'$
 RUNOFF = 125'
 SE = 5.0%

THOMAS L. PRICE
 DORIS W. PRICE
 DB 7082 PG 20



MATCHLINE -XL- STA 15+40 (SHEET 2B-1)

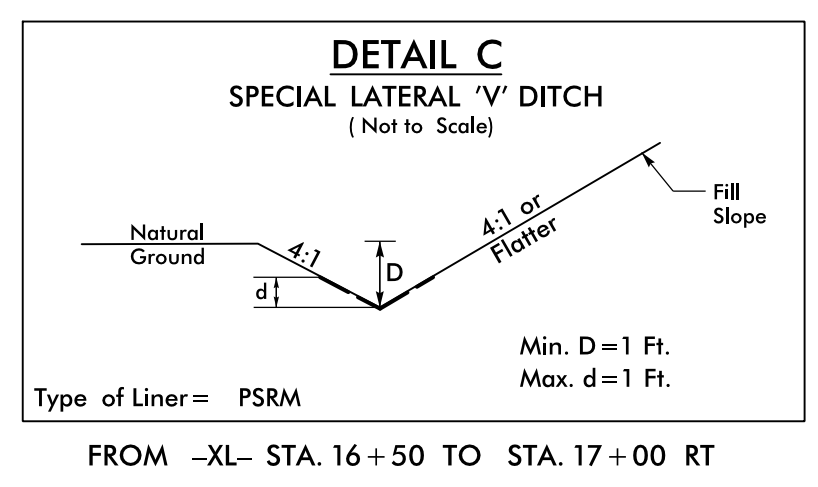
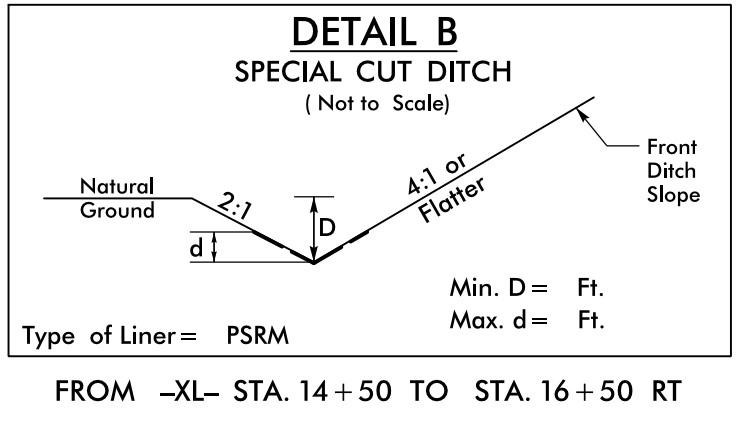
MATCHLINE -XL- STA 20+80 (SHEET 2B-3)

HORIZONTAL DRAINAGE SLOTS ON TEMPORARY ASPHALT ISLAND
 4" X 12" SLOTS @ 20' SPACING
 -XL- STA. 13+41 TO STA. 19+21

END GRADE
 -XL- STA. 16+70.60

SPECIAL CUT DITCH
 14+50 TO 16+50 RT
 140 SY PSRM
 (SEE DETAIL B)

SPECIAL LATERAL 'V' DITCH
 16+50 TO 17+00 RT
 30 SY PSRM
 (SEE DETAIL C)



1
 MILES E. LITTLE
 CAROL S. LITTLE
 DB 11960 PG 1

SEE SHEET 2B-6 FOR -XL- PROFILE