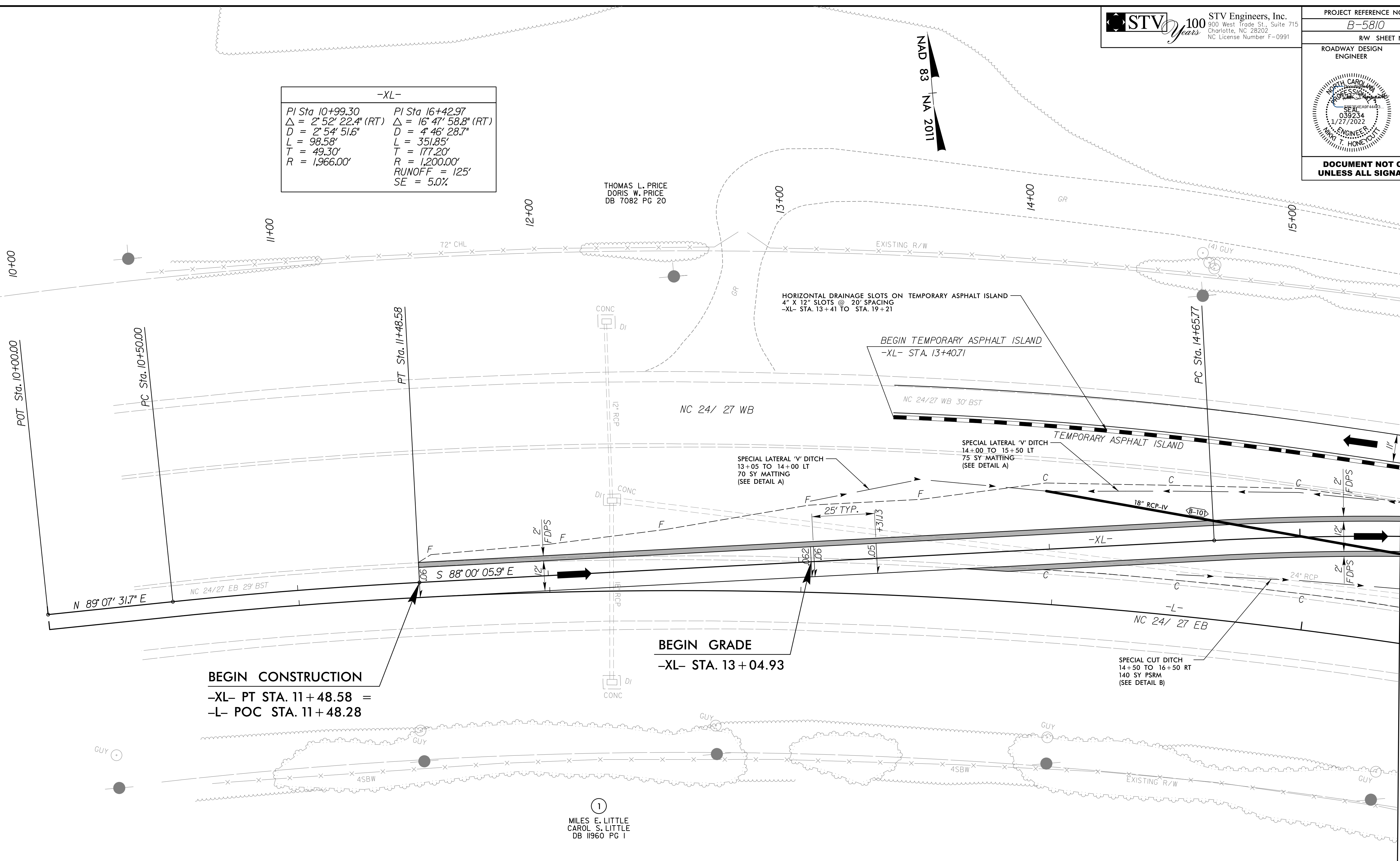


PROJECT REFERENCE NO. B-5810		SHEET NO. 2B-1	
RW SHEET NO.			
ROADWAY DESIGN ENGINEER		HYDRAULICS ENGINEER	
DOCUMENT NOT CONSIDERED FINAL UNLESS ALL SIGNATURES COMPLETED			

-XL-	
PI Sta 10+99.30	PI Sta 16+42.97
$\Delta = 2^\circ 52' 22.4''$ (RT)	$\Delta = 16^\circ 47' 58.8''$ (RT)
D = 2' 54' 51.6"	D = 4' 46' 28.7"
L = 98.58'	L = 351.85'
T = 49.30'	T = 177.20'
R = 1,966.00'	R = 1,200.00'
	RUNOFF = 125'
	SE = 5.0%

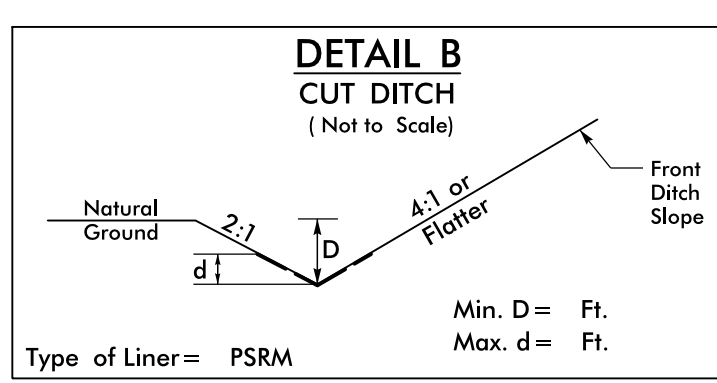
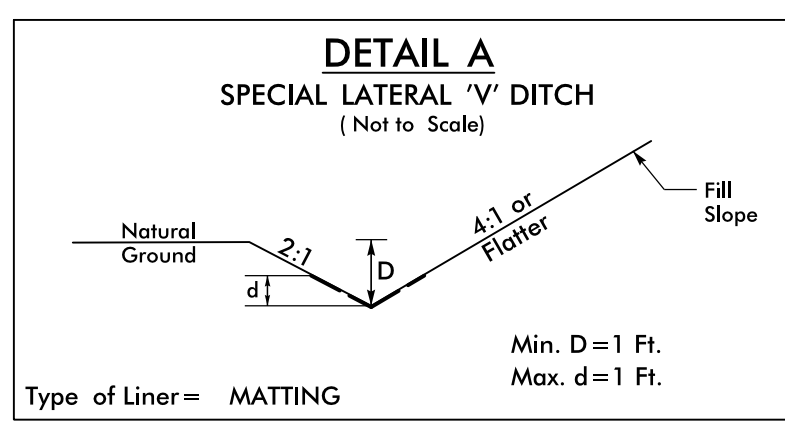
NAD 83
 NA 2011



BEGIN CONSTRUCTION
 -XL- PT STA. 11+48.58 =
 -L- POC STA. 11+48.28

BEGIN GRADE
 -XL- STA. 13+04.93

MATCHLINE -XL- STA 15+40 (SHEET 2B-2)



FROM -XL- STA. 13+05 TO STA. 14+00 LT
 FROM -XL- STA. 14+00 TO STA. 15+50 LT

FROM -XL- STA. 14+50 TO STA. 16+50 RT

SEE SHEET 2B-6 FOR -XL- PROFILE

1/26/2022
 I:\26\2022\proj\sh\B5810_rdy_psh\2B-1.dgn