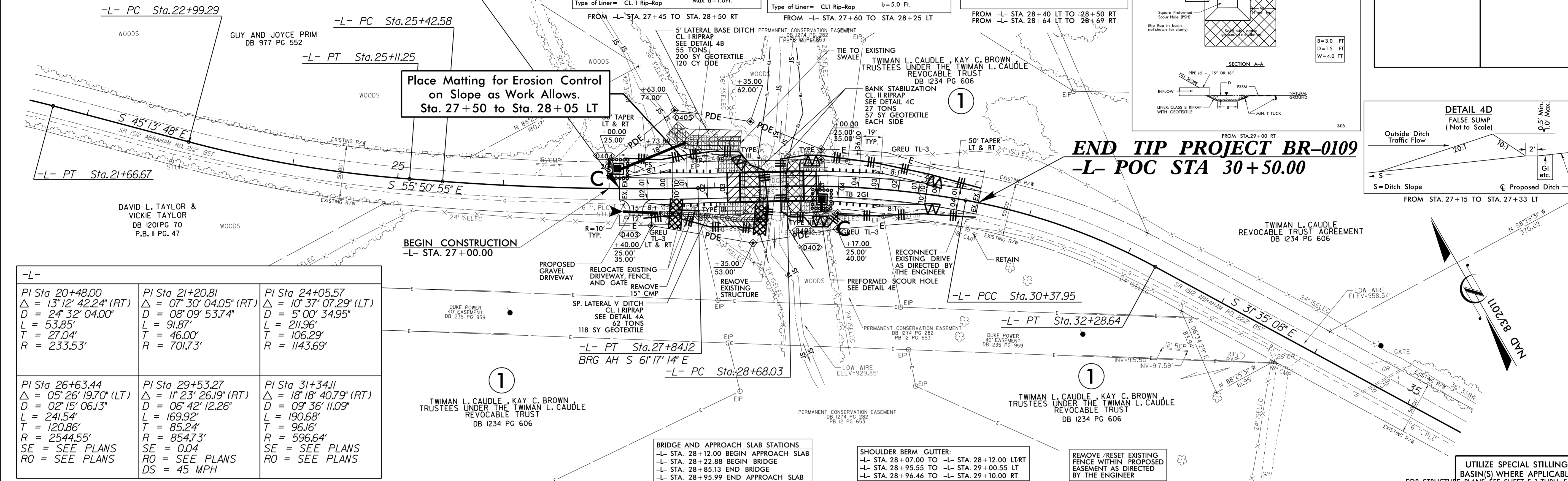


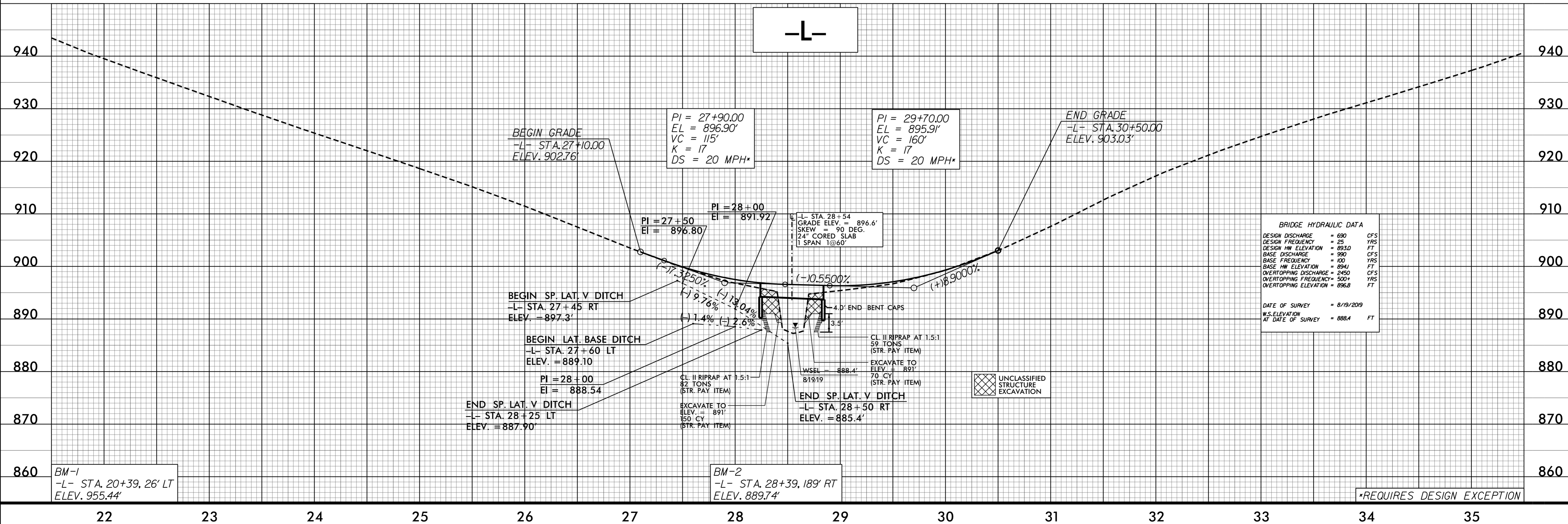
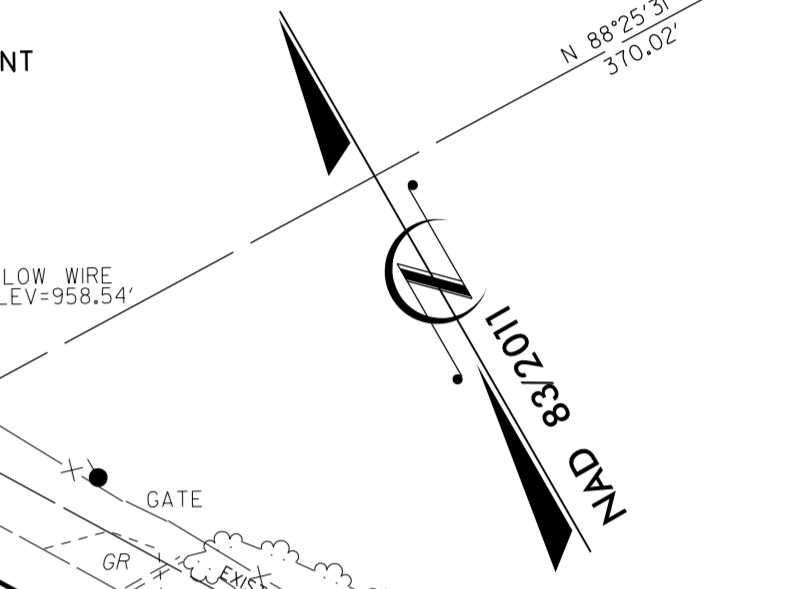
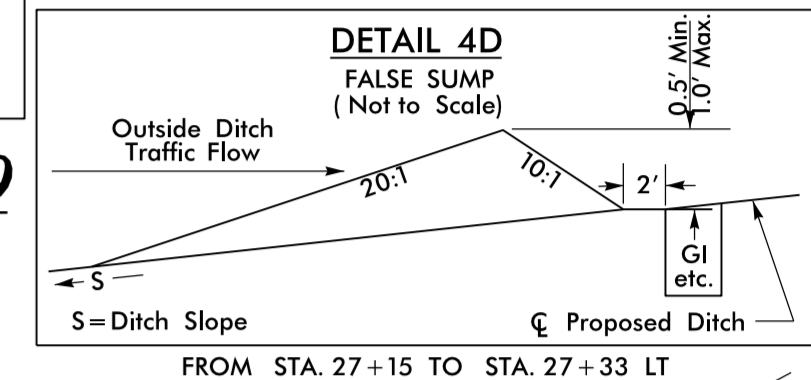
BEGIN TIP PROJECT BR-0109
-L- POC STA 27+10.00

| | |
|-------------------------|---------------------|
| PROJECT REFERENCE NO. | SHEET NO. |
| BR-0109 | EC-05/CONST.04 |
| RW SHEET NO. | |
| ROADWAY DESIGN ENGINEER | HYDRAULICS ENGINEER |



| -L- | | |
|--|--|--|
| PI Sta 20+48.00 $\Delta = 13^\circ 12' 42.24''$ (RT) $D = 24' 32.0400''$ $L = 53.85'$ $T = 27.04'$ $R = 233.53'$ | PI Sta 21+20.81 $\Delta = 07^\circ 30' 04.05''$ (RT) $D = 08' 09.5374''$ $L = 91.87'$ $T = 46.00'$ $R = 701.73'$ | PI Sta 24+05.57 $\Delta = 10^\circ 37' 07.29''$ (LT) $D = 5' 00.3495''$ $L = 211.96'$ $T = 106.29'$ $R = 1143.69'$ |
| PI Sta 26+63.44 $\Delta = 05^\circ 26' 19.70''$ (LT) $D = 02' 15.0613''$ $L = 241.54'$ $T = 120.86'$ $R = 2544.55'$ SE = SEE PLANS RO = SEE PLANS | PI Sta 29+53.27 $\Delta = 11^\circ 23' 26.19''$ (RT) $D = 06' 42.1226''$ $L = 169.92'$ $T = 85.24'$ $R = 854.73'$ SE = 0.04 DS = 45 MPH | PI Sta 31+34.11 $\Delta = 18^\circ 18' 40.79''$ (RT) $D = 09' 36.1109''$ $L = 190.68'$ $T = 96.16'$ $R = 596.64'$ SE = SEE PLANS RO = SEE PLANS |

- BRIDGE AND APPROACH SLAB STATIONS
 - L- STA. 28+12.00 BEGIN APPROACH SLAB
 - L- STA. 28+22.88 BEGIN BRIDGE
 - L- STA. 28+85.13 END BRIDGE
 - L- STA. 28+95.99 END APPROACH SLAB
- SHOULDER BERM GUTTER:
 - L- STA. 28+07.00 TO -L- STA. 28+12.00 LTRT
 - L- STA. 28+95.55 TO -L- STA. 29+00.55 LT
 - L- STA. 28+96.46 TO -L- STA. 29+10.00 RT
- REMOVE / RESET EXISTING FENCE WITHIN PROPOSED EASEMENT AS DIRECTED BY THE ENGINEER



| BRIDGE HYDRAULIC DATA | |
|----------------------------------|-------------|
| DESIGN DISCHARGE | = 600 CFS |
| DESIGN FREQUENCY | = 25 YRS |
| DESIGN HW ELEVATION | = 893.0 FT |
| BASE DISCHARGE | = 990 CFS |
| BASE FREQUENCY | = 50 YRS |
| BASE HW ELEVATION | = 894.1 FT |
| OVERTOPPING DISCHARGE | = 2450 CFS |
| OVERTOPPING FREQUENCY | = 500+ YRS |
| OVERTOPPING ELEVATION | = 896.8 FT |
| DATE OF SURVEY | = 8/19/2009 |
| W.S. ELEVATION AT DATE OF SURVEY | = 888.4 FT |

UNCLASSIFIED STRUCTURE EXCAVATION

*REQUIRES DESIGN EXCEPTION

REVISIONS

2/16/2010 8:07:48 AM
 H:\PROJECTS\BR-0109\EC-05\CONST.04.dgn