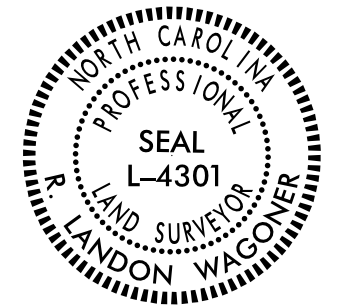


Location and Surveys

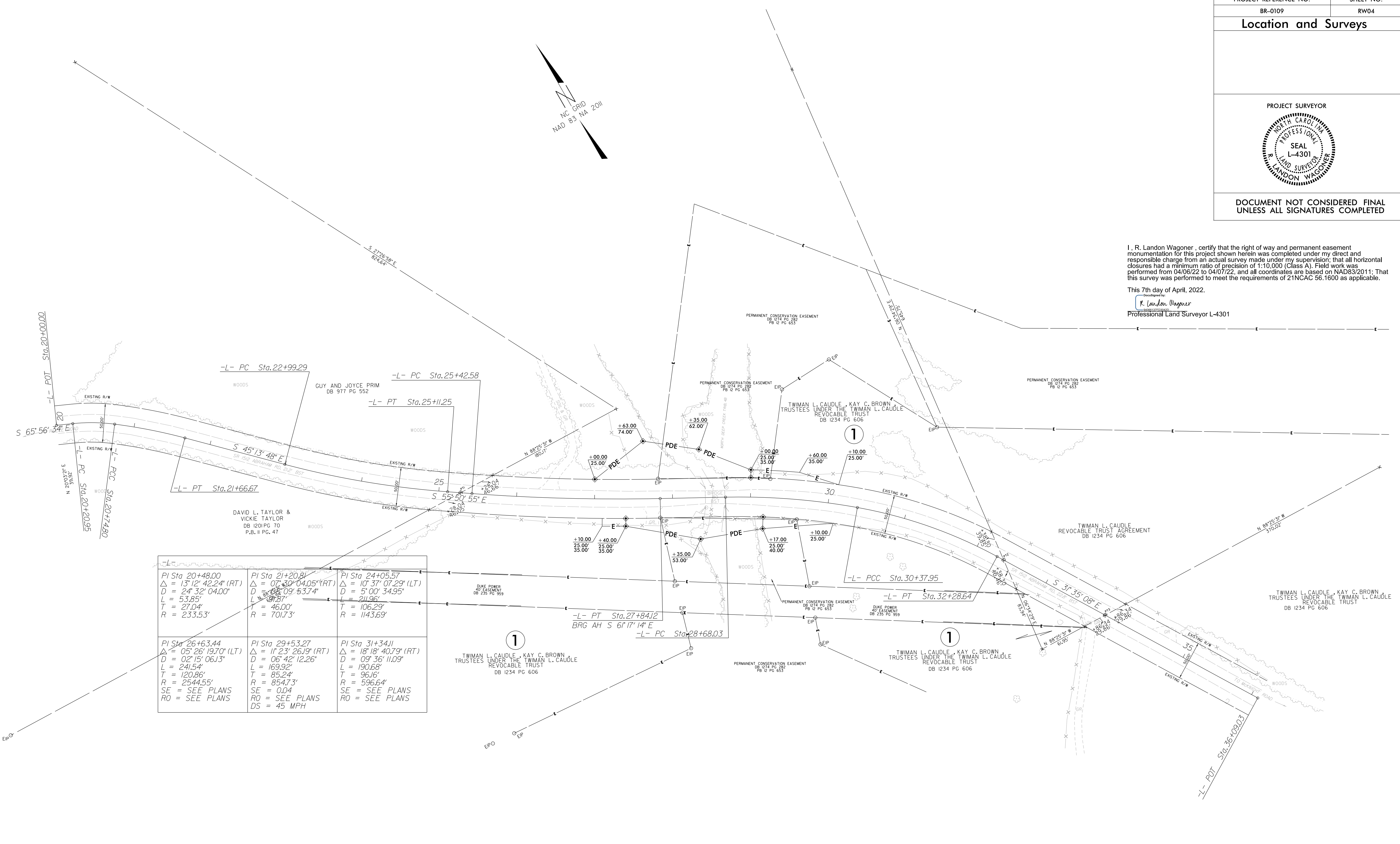
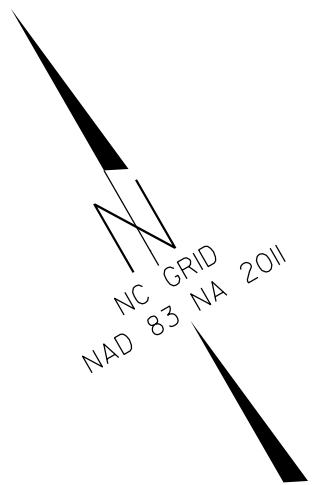
PROJECT SURVEYOR



DOCUMENT NOT CONSIDERED FINAL UNLESS ALL SIGNATURES COMPLETED

I, R. Landon Wagoner, certify that the right of way and permanent easement monumentation for this project shown herein was completed under my direct and responsible charge from an actual survey made under my supervision; that all horizontal closures had a minimum ratio of precision of 1:10,000 (Class A). Field work was performed from 04/06/22 to 04/07/22, and all coordinates are based on NAD83/2011; That this survey was performed to meet the requirements of 21NCAC 56.1600 as applicable.

This 7th day of April, 2022.
 R. Landon Wagoner
 Professional Land Surveyor L-4301



| | | |
|---|---|---|
| PI Sta 20+48.00 $\Delta = 13^\circ 12' 42.24''$ (RT) $D = 24^\circ 32' 04.00''$ $L = 53.85'$ $T = 27.04'$ $R = 233.53'$ | PI Sta 21+20.81 $\Delta = 07^\circ 30' 04.05''$ (RT) $D = 08^\circ 09' 53.74''$ $L = 39.87'$ $T = 46.00'$ $R = 701.73'$ | PI Sta 24+05.57 $\Delta = 10^\circ 37' 07.29''$ (LT) $D = 5^\circ 00' 34.95''$ $L = 211.96'$ $T = 106.29'$ $R = 1143.69'$ |
| PI Sta 26+63.44 $\Delta = 05^\circ 26' 19.70''$ (LT) $D = 02^\circ 15' 06.13''$ $L = 241.54'$ $T = 120.86'$ $R = 2544.55'$ SE = SEE PLANS RO = SEE PLANS | PI Sta 29+53.27 $\Delta = 11^\circ 23' 26.19''$ (RT) $D = 06^\circ 42' 12.26''$ $L = 169.92'$ $T = 85.24'$ $R = 854.73'$ SE = 0.04 RO = SEE PLANS DS = 45 MPH | PI Sta 31+34.11 $\Delta = 18^\circ 18' 40.79''$ (RT) $D = 09^\circ 36' 11.09''$ $L = 190.68'$ $T = 96.16'$ $R = 596.64'$ SE = SEE PLANS RO = SEE PLANS |

REVISIONS

6/2/19
 07_AFB_2022_0223_UBR-0109_RVs take & sheets 04-06-22\150_row sheets\BR0109_1s_r-w04.dgn
 07_AFB_2022_0223_UBR-0109_RVs take & sheets 04-06-22\150_row sheets\BR0109_1s_r-w04.dgn
 07_AFB_2022_0223_UBR-0109_RVs take & sheets 04-06-22\150_row sheets\BR0109_1s_r-w04.dgn

NOTES:

1. IF FURTHER INFORMATION REGARDING PROJECT CONTROL IS NEEDED PLEASE CONTACT THE LOCATION AND SURVEYS UNIT.
2. PROJECT CONTROL WAS ESTABLISHED USING GNSS, THE GLOBAL NAVIGATION SATELLITE SYSTEM.
3. RIGHT OF WAY MONUMENTATION ESTABLISHED _____ TO _____.