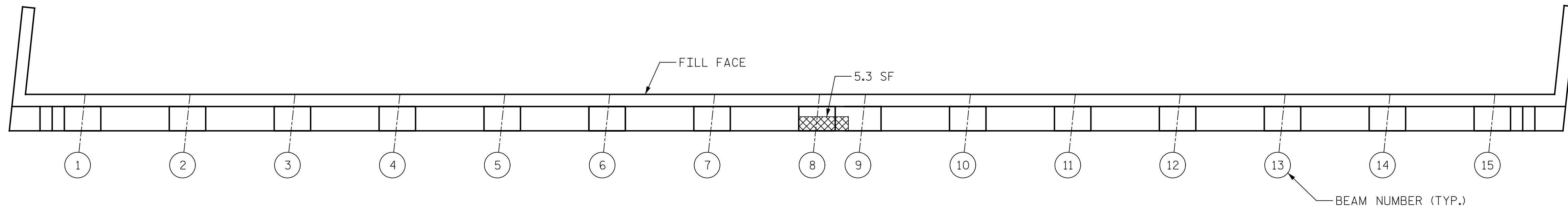
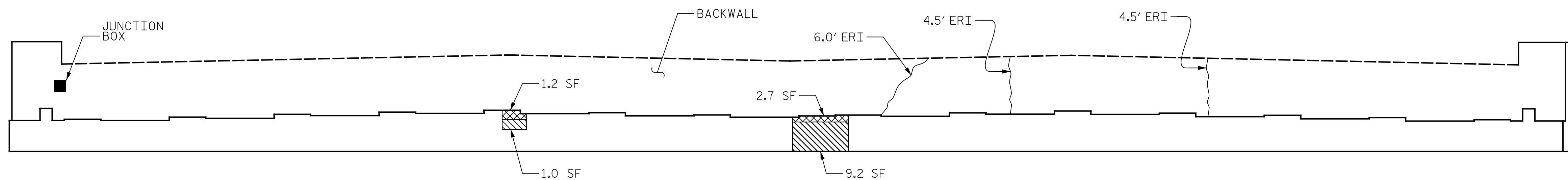


p:\gfn\pw.bentley.com\gfn\pw-01\Documents\Projects\67945\Phase 003 - I-5997 Rehab\Structures\CAD\2.0 100% Plans\405-019-15997-SMU-E02-910278-075
 11/22/2021 9:25:49 AM pdf_color_gfclt_FS.plt Rowan.pcn.tbl



PLAN



ELEVATION

END BENT 2	QUANTITIES			
	ESTIMATE		ACTUAL	
SHOTCRETE REPAIRS	AREA SF	VOLUME CF	AREA SF	VOLUME CF
CAP	10.2	3.9		
BACKWALL	0.0	0.0		
CONCRETE REPAIRS	AREA SF	VOLUME CF	AREA SF	VOLUME CF
CAP	9.2	3.5		
BACKWALL	0.0	0.0		
EPOXY RESIN INJECTION	LN. FT		LN. FT	
CAP	15.0			
BACKWALL	0.0			
EPOXY COATING	AREA SF		AREA SF	
TOP OF END BENT CAP	255			

VALUES IN CHARTS REPRESENT ESTIMATED REPAIRS TOTALS AFTER REMOVAL OF SOUND CONCRETE, MIN. OF 1" BEHIND REBAR AND MIN. 1" CLEAR TO SAW CUT. SEE REPAIR DETAILS.

NOTES:

REPAIR LOCATIONS AND ESTIMATE OF QUANTITIES ARE BASED ON THE BEST INFORMATION AVAILABLE. IF ADDITIONAL REPAIRS NOT SHOWN ON THE DRAWINGS ARE DEEMED NECESSARY BY THE ENGINEER, THE ENGINEER WILL NOTE ON THE DRAWINGS THE APPROXIMATE LOCATIONS AND DESCRIPTION OF THE REPAIRS AND ENTER THE ACTUAL QUANTITIES INTO THE AS-BUILT REPAIR QUANTITY TABLE.

FOR REPAIRS, SEE "TYPICAL CAP AND COLUMN REPAIR DETAILS" SHEET.

FOR SHOTCRETE REPAIRS, SEE SPECIAL PROVISIONS.

FOR CONCRETE REPAIRS, SEE SPECIAL PROVISIONS.

SHOTCRETE REPAIRS MAY BE REPLACED WITH CONCRETE REPAIRS WITH THE APPROVAL OF THE ENGINEER.

CLEAN AND REMOVE DEBRIS FROM THE TOP OF THE CAP AND APPLY EPOXY PROTECTIVE COATING. EPOXY COATING SHALL BE APPLIED TO THE TOP SURFACE OF THE CAP. THE CONTRACTOR SHALL NOT COAT THE AREA OF THE CAP BENEATH THE MASONRY PLATES. FOR EPOXY COATING, SEE SPECIAL PROVISIONS.

FOR EPOXY RESIN INJECTION, SEE SPECIAL PROVISIONS.

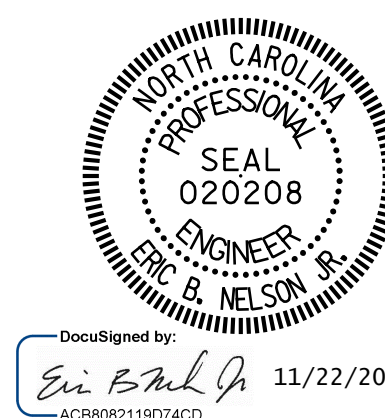
CONCRETE REPAIRS TO THE BENT CAP MAY REQUIRE BRIDGE JACKING. FOR BRIDGE JACKING, SEE "JACKING DETAILS" SHEET.

WHEN COLUMN REPAIRS ARE INDICATED TO GROUND LINE, EXTEND REPAIR ONE (1) FOOT MIN. BELOW GROUND LINE.

THE CONTRACTOR SHALL REMOVE VEGETATION GROWING ON THE END BENTS TO THE GROUND LINE. NO SEPARATE PAYMENT WILL BE MADE FOR REMOVAL OF VEGETATION, AS PAYMENT IS INCLUDED IN THE CONTRACT UNIT PRICE BID FOR "EPOXY COATING AND DEBRIS REMOVAL".

- SHOTCRETE REPAIR
- CONCRETE REPAIRS (FORM & POUR)
- ERI - EPOXY RESIN INJECTION

PROJECT NO. I-5997
WAKE COUNTY
 BRIDGE NO. 910278



DocuSigned by:
 Eric B. Nelson
 11/22/2021
 ACB808219074CD

STATE OF NORTH CAROLINA
 DEPARTMENT OF TRANSPORTATION
 RALEIGH

END BENT 2

REVISIONS						SHEET NO.
NO.	BY:	DATE:	NO.	BY:	DATE:	S-75
1			3			TOTAL SHEETS
2			4			82

DRAWN BY : J. MYA DATE : 08/2021
 CHECKED BY : J. YANACCONI DATE : 09/2021
 DESIGN ENGINEER OF RECORD: R. NELSON DATE : 09/2021

PLANS PREPARED BY:
Gannett Fleming
 Excellence Delivered As Promised
 One Glenwood Avenue
 Suite 900
 Raleigh, NC 27603
 (919) 420-7660
 NC Lic. No. F-0270

DOCUMENT NOT CONSIDERED
 FINAL UNLESS ALL
 SIGNATURES COMPLETED