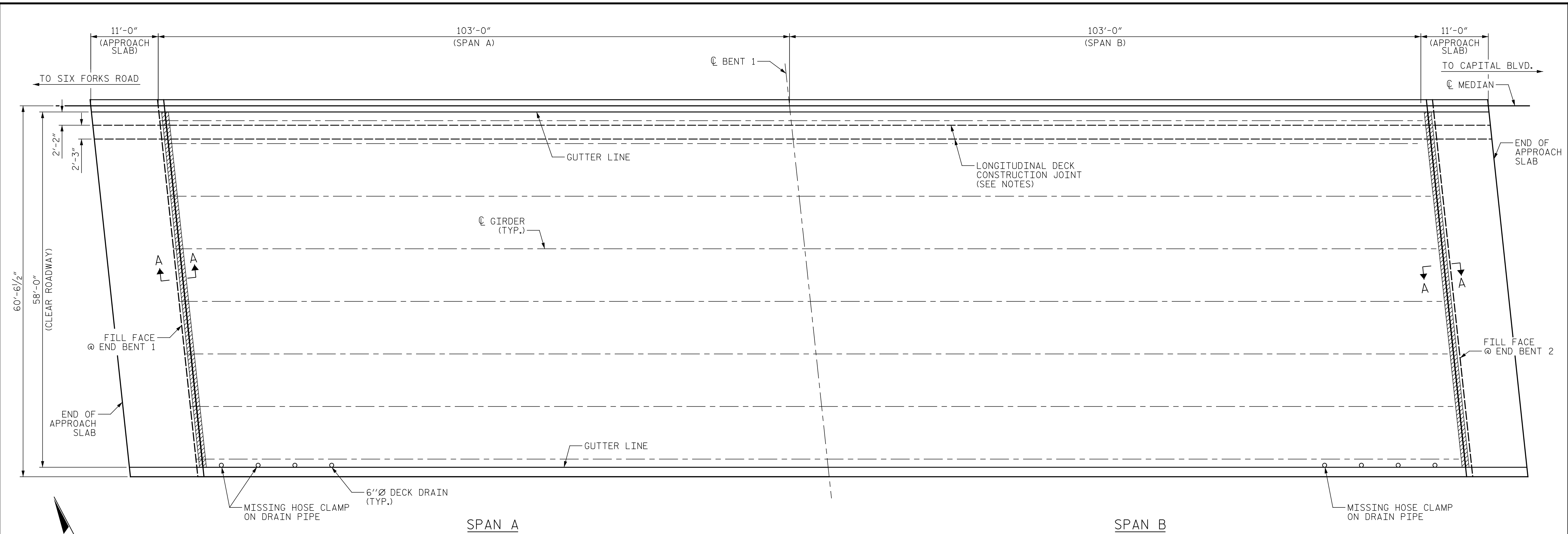


p:\gfn\p-w-bentley.com\gfn\p-w-01\Documents\Projects\67945\Phase 003 - I-5997 Rehab\Structures\CAD\2.0 100% Plans\405-007_I5997_SMUL_S01_910278_069
 1/10/2022 10:43:51 PM pdf_color_gfclt_FS.plt Rowan.pen.tbl



PLAN

SUMMARY OF QUANTITIES				
	ESTIMATE		ACTUAL	
FINE MILLING *	2436 SY			
CLASS II SURFACE PREPARATION	13.0 SY			
CONCRETE DECK REPAIR FOR PC OVERLAY	13.0 SY			
PC MATERIALS	46.3 CY			
PLACING AND FINISHING PC OVERLAY	1481 SY			
GROOVING BRIDGE FLOORS	12458 SF			
UNDERSIDE OF DECK REPAIR				
SHOTCRETE REPAIRS	ESTIMATE		ACTUAL	
	AREA SF	VOLUME CF	AREA SF	VOLUME CF
UNDERSIDE OF DECK	0.0	0.0		
OVERHANG DIAPHRAGMS	0.0	0.0		
UNDERSIDE OF OVERHANG	0.0	0.0		
INTERIOR DIAPHRAGMS	0.0	0.0		
	ESTIMATE		ACTUAL	
UNDERSIDE EPOXY RESIN INJECTION	0.0 LF			

- FINE MILLING OF BRIDGE DECK
- APPROX. AREA CLASS II SURFACE PREPARATION

NOTES:

REPAIR LOCATIONS AND ESTIMATED QUANTITIES ARE GIVEN WITH THE BEST INFORMATION AVAILABLE. IF ADDITIONAL REPAIRS NOT SHOWN ON THE DRAWINGS ARE DEEMED NECESSARY BY THE ENGINEER, THE ENGINEER WILL NOTE ON THE DRAWINGS THE APPROXIMATE LOCATIONS AND DESCRIPTION OF THE REPAIRS AND ADJUST THE ACTUAL QUANTITIES ENTERED INTO THE REPAIR QUANTITY TABLE.

PAYMENT FOR CLASS II SURFACE PREPARATION IS BASED UPON SQUARE YARDS OF ADDITIONAL DEMOLITION REQUIRED FOLLOWING FINE MILLING OF BRIDGE DECK. SEE "OVERLAY SURFACE PREPARATION" SPECIAL PROVISION.

CONCRETE COVER FOR TOP BARS IN THE DECK SLAB IS 1 1/2" PER THE EXISTING BRIDGE PLANS.

FOR SECTION A-A, SEE "JOINT DETAILS" SHEET.

FOR REPAIR OF EXISTING DECK DRAINS, SEE SPECIAL PROVISIONS AND "MISCELLANEOUS DETAILS" SHEET.

FOR DETAILS ON LONGITUDINAL DECK CONSTRUCTION JOINT, SEE "TYPICAL SECTION AND SURFACE PREPARATION DETAILS" SHEET.

* THE QUANTITY OF FINE MILLING INCLUDES THE CONCRETE BRIDGE DECK, CONCRETE APPROACH SLABS, AND 150 FEET OF THE ASPHALT APPROACH PAVEMENT AT EACH END OF THE BRIDGE.

FOR FINE MILLING, SEE SPECIAL PROVISIONS.

PROJECT NO. I-5997
WAKE COUNTY
 BRIDGE NO. 910278

SHEET 1 OF 2

STATE OF NORTH CAROLINA
DEPARTMENT OF TRANSPORTATION
RALEIGH

PLAN OF SPANS
EAST BOUND



DRAWN BY : J. MYA DATE : 08/2021
 CHECKED BY : J. YANNACCONE DATE : 09/2021
 DESIGN ENGINEER OF RECORD : R. NELSON DATE : 09/2021

PLANS PREPARED BY:
Gannett Fleming
 Excellence Delivered As Promised

One Glenwood Avenue
 Suite 900
 Raleigh, NC 27603
 (919) 420-7660
 NC Lic. No. F-0270

DOCUMENT NOT CONSIDERED FINAL UNLESS ALL SIGNATURES COMPLETED

REVISIONS						SHEET NO.
NO.	BY:	DATE:	NO.	BY:	DATE:	S-69
1			3			TOTAL SHEETS
2			4			82