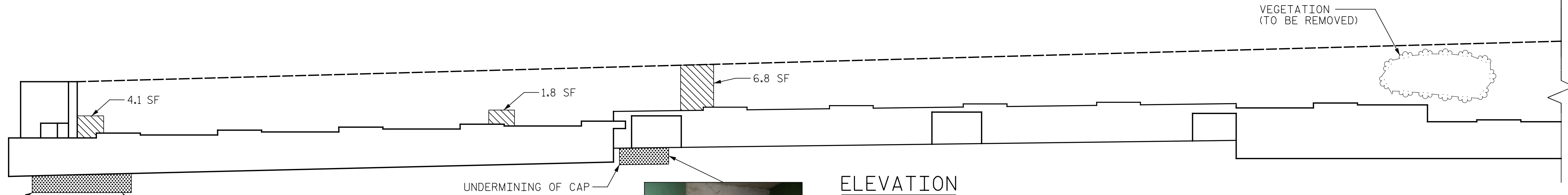
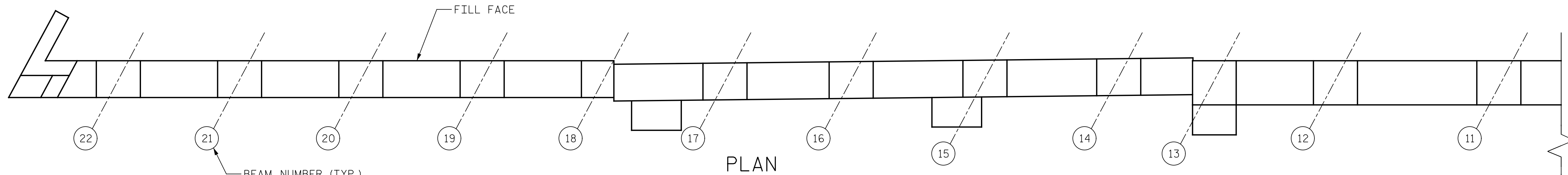
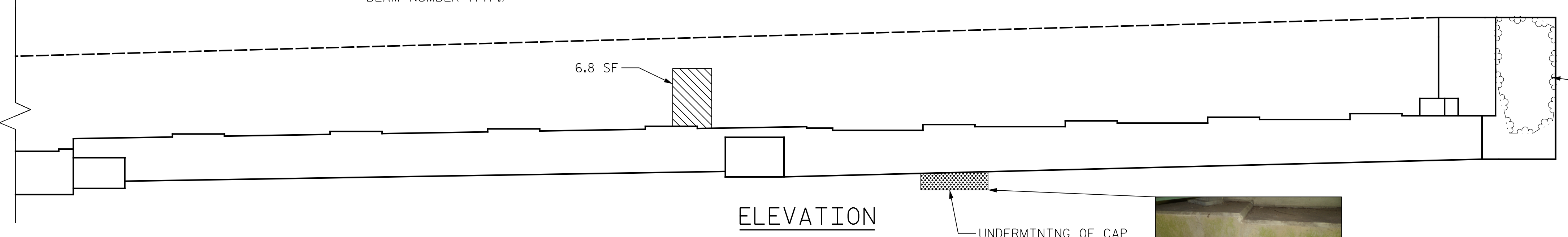
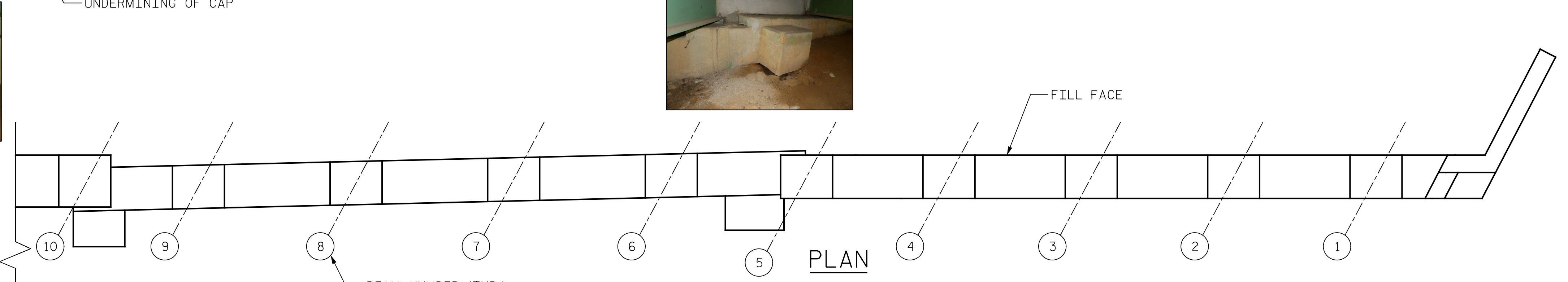


p:\gfn\pw.bentley.com\gfn\p-w-01\Documents\Projects\67945\Phase 003 - I-5997 Rehab\Structures\CAD\2.0 100% Plans\403-021-15997\_SMU\_E01\_910263-910264\_043  
 11/22/2021 9:21:36 AM pdf\_color\_gfcolt\_FS.plt Rowan.pen.tbl



- SHOTCRETE REPAIR
- CONCRETE REPAIRS (FORM & POUR)
- ERI - EPOXY RESIN INJECTION



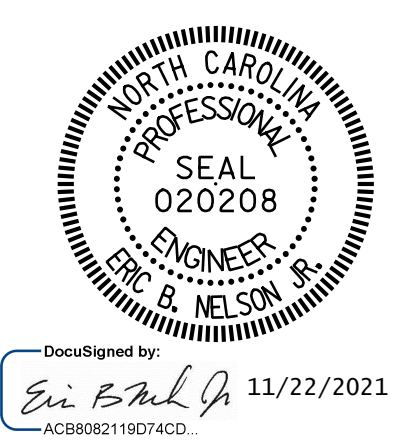
REPAIR QUANTITY TABLE				
END BENT 1	QUANTITIES			
	ESTIMATE		ACTUAL	
SHOTCRETE REPAIRS	AREA SF	VOLUME CF	AREA SF	VOLUME CF
CAP	19.5	7.1		
CURTAIN WALL	0.0	0.0		
CONCRETE REPAIRS	AREA SF	VOLUME CF	AREA SF	VOLUME CF
CAP	0.0	0.0		
CURTAIN WALL	0.0	0.0		
EPOXY RESIN INJECTION		LN. FT		LN. FT
CAP		0.0		
CURTAIN WALL		0.0		

VALUES IN CHARTS REPRESENT ESTIMATED REPAIRS TOTALS AFTER REMOVAL OF SOUND CONCRETE, MIN. OF 1" BEHIND REBAR AND MIN. 2" CLEAR TO SAW CUT. SEE REPAIR DETAILS.

**NOTES:**

- REPAIR LOCATIONS AND ESTIMATE OF QUANTITIES ARE BASED ON THE BEST INFORMATION AVAILABLE. IF ADDITIONAL REPAIRS NOT SHOWN ON THE DRAWINGS ARE DEEMED NECESSARY BY THE ENGINEER, THE ENGINEER WILL NOTE ON THE DRAWINGS THE APPROXIMATE LOCATIONS AND DESCRIPTION OF THE REPAIRS AND ENTER THE ACTUAL QUANTITIES INTO THE AS-BUILT REPAIR QUANTITY TABLE.
- FOR REPAIRS, SEE "TYPICAL CAP AND COLUMN REPAIR DETAILS" SHEET.
- FOR SHOTCRETE REPAIRS, SEE SPECIAL PROVISIONS.
- FOR CONCRETE REPAIRS, SEE SPECIAL PROVISIONS.
- SHOTCRETE REPAIRS MAY BE REPLACED WITH CONCRETE REPAIRS WITH THE APPROVAL OF THE ENGINEER.
- CLEAN AND REMOVE DEBRIS FROM THE TOP OF THE CAP AND APPLY EPOXY PROTECTIVE COATING. EPOXY COATING SHALL BE APPLIED TO THE TOP SURFACE OF THE CAP. THE CONTRACTOR SHALL NOT COAT THE AREA OF THE CAP BENEATH THE MASONRY PLATES. FOR EPOXY COATING, SEE SPECIAL PROVISIONS.
- FOR EPOXY RESIN INJECTION, SEE SPECIAL PROVISIONS.
- CONCRETE REPAIRS TO THE BENT CAP MAY REQUIRE BRIDGE JACKING. FOR BRIDGE JACKING, SEE "JACKING DETAILS" SHEET.
- FOR REMOVAL OF VEGETATION, SEE EPOXY COATING AND DEBRIS REMOVAL SPECIAL PROVISION.
- BACKFILL UNDERMINED AREAS UNDER END BENT CAP WITH FLOWABLE FILL TO MATCH THE GRADE OF THE ADJACENT BERM. FOR FLOWABLE FILL, SEE SPECIAL PROVISIONS.

PROJECT NO. I-5997  
WAKE COUNTY  
 BRIDGE NO. 910263&910264



STATE OF NORTH CAROLINA  
 DEPARTMENT OF TRANSPORTATION  
 RALEIGH

**END BENT 1**

DRAWN BY : J. MYA / E. TODD      DATE : 07/2021  
 CHECKED BY : J. YANNAACONNE      DATE : 09/2021  
 DESIGN ENGINEER OF RECORD: R. NELSON      DATE : 09/2021

PLANS PREPARED BY:  
**Gannett Fleming**  
 Excellence Delivered As Promised

One Glenwood Avenue  
 Suite 900  
 Raleigh, NC 27603  
 (919) 420-7660  
 NC Lic. No. F-0270

DOCUMENT NOT CONSIDERED FINAL UNLESS ALL SIGNATURES COMPLETED

REVISIONS						SHEET NO.
NO.	BY:	DATE:	NO.	BY:	DATE:	S-43
1			3			TOTAL SHEETS
2			4			82