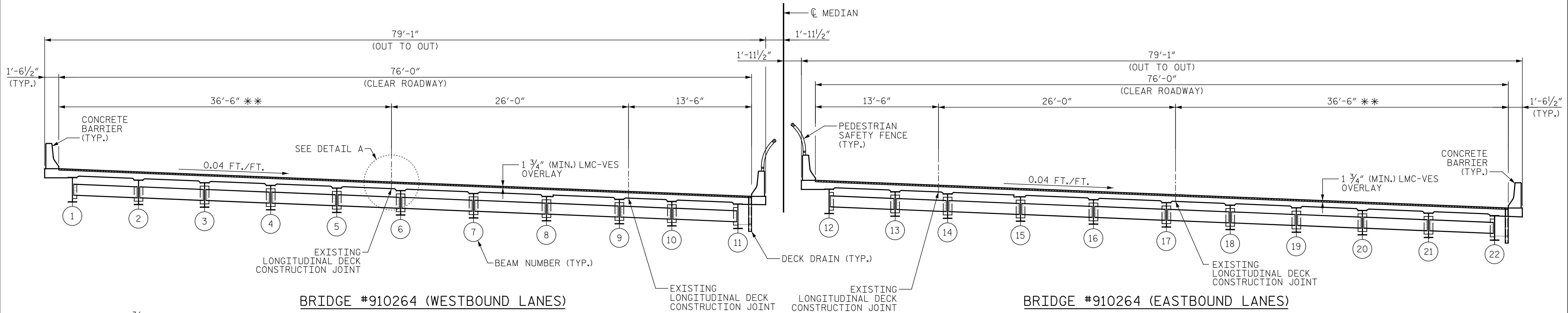


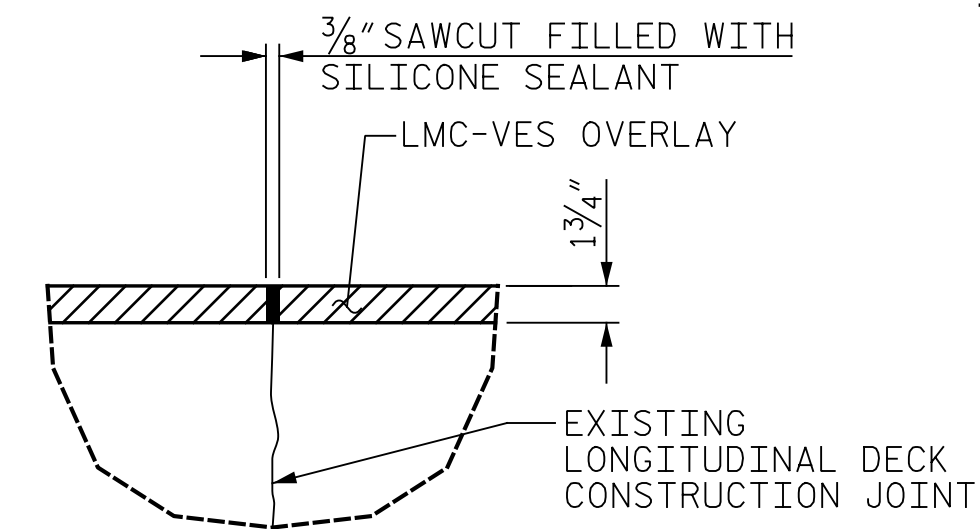
p:\gfn\p-w\ben\h\com\gfn\p-w-01\Documents\Projects\67945\Phase 003 - I-5997 Rehab\Structures\CAD\2.0 100% Plans\403-005_I5997_SMU_TS-910263-910264-035 1/10/2022 10:41:48 PM pdf_color_gfclt_FS.plt Rowan,pen,tbl



BRIDGE #910264 (WESTBOUND LANES)

BRIDGE #910264 (EASTBOUND LANES)

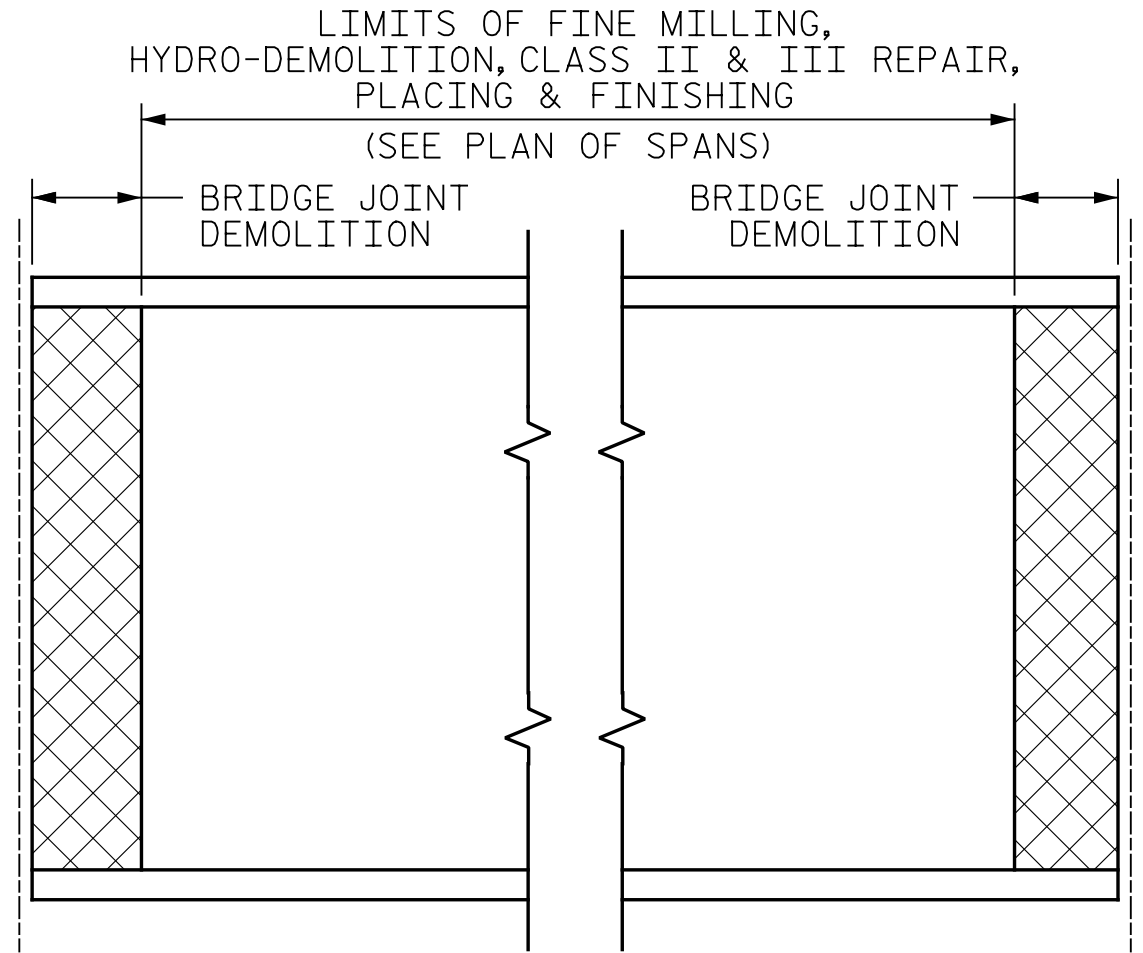
TYPICAL SECTION (PROPOSED)



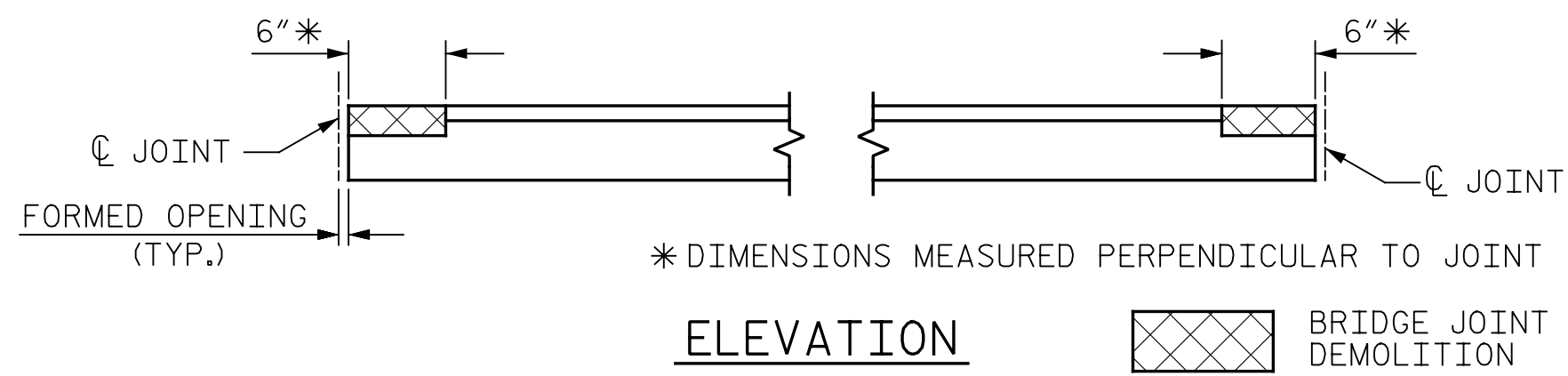
DETAIL A

(TYP. @ ALL EXISTING LONGITUDINAL DECK CONSTRUCTION JOINTS)

** FIELD VERIFY DIMENSION TO EXISTING LONGITUDINAL DECK CONSTRUCTION JOINT (SEE NOTES)

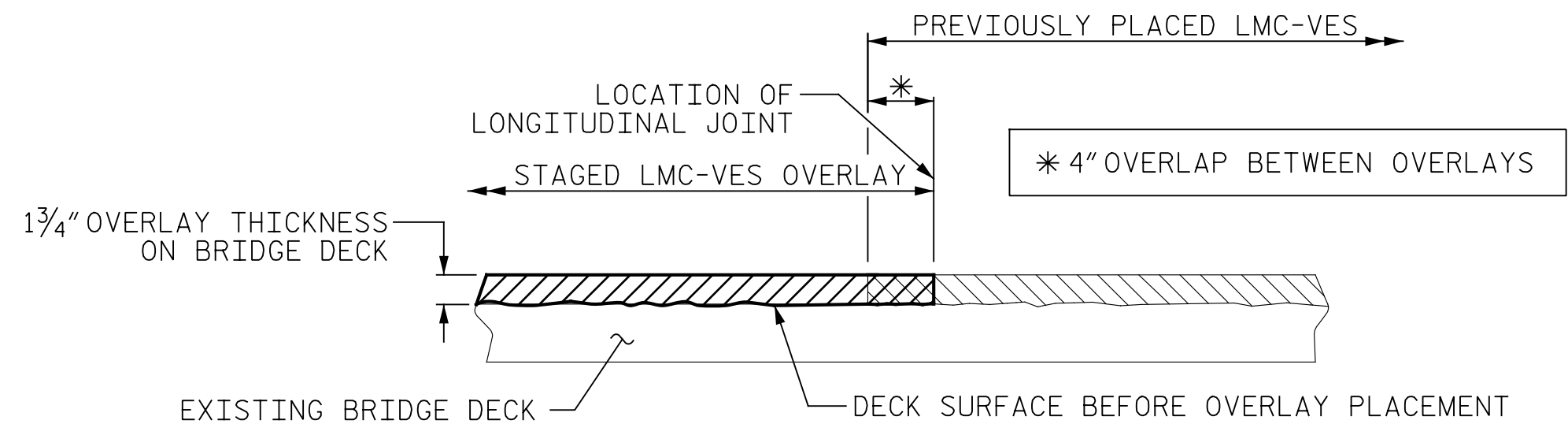


PLAN

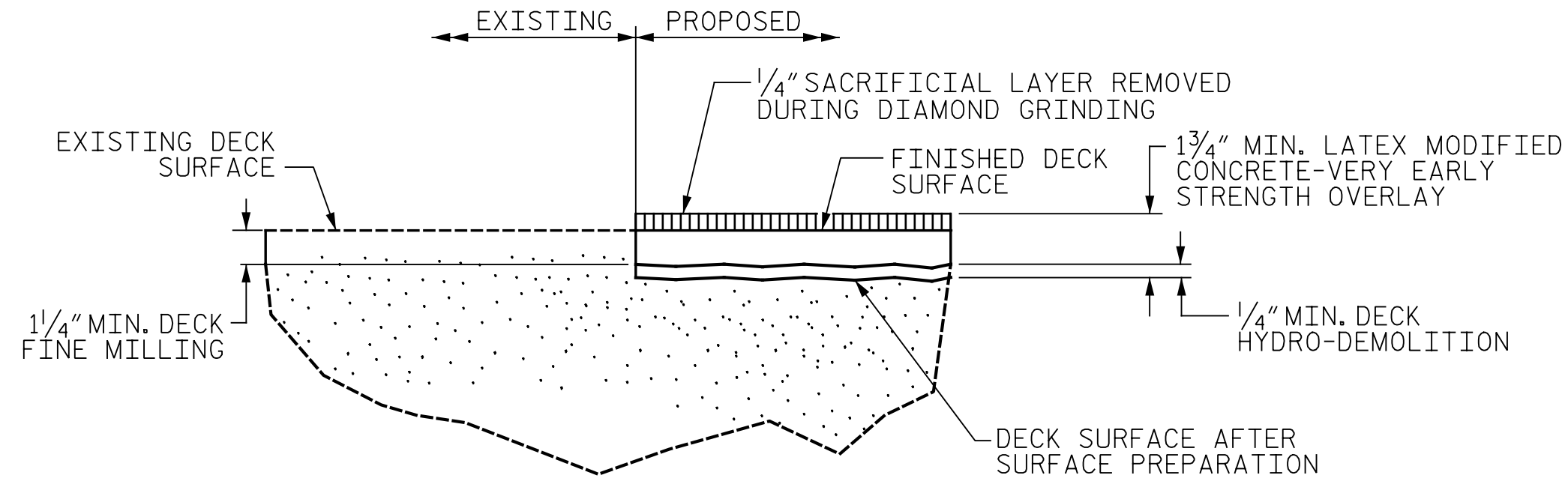


ELEVATION

PAY LIMITS FOR OVERLAY BID ITEMS



SECTION THRU DECK STAGED LMC-VES OVERLAY JOINT (AS NEEDED)



DETAIL FOR LMC-VES OVERLAY

NOTES:

UNLESS INDICATED OTHERWISE IN THE PLANS, SEE TRAFFIC MANAGEMENT PLANS FOR TYPICAL LANE WIDTHS, SEQUENCING, AND OTHER TRAFFIC CONTROL MEASURES FOR STAGING OF OVERLAY SURFACE PREPARATION AND LMC-VES PLACEMENT.

WHEN PREPARING THE SURFACE FOR LMC-VES OVERLAY ADJACENT TO A PREVIOUSLY PLACED LMC-VES STAGE, THE PREVIOUSLY PLACED LMC-VES SHALL BE REMOVED FOR A DISTANCE OF 4 INCHES FROM THE LMC-VES EDGE. THE SURFACE OF THE NEW STAGE AREA, ALONG WITH THE 4 INCH OVERLAY AREA, SHALL BE PREPARED AS PER THE OVERLAY SURFACE PREPARATION SPECIAL PROVISIONS. NEW LMC-VES SHALL BE PLACED IN THE 4-INCH OVERLAP, AS PART OF THE NEW LMC-VES STAGE PLACEMENT.

THE LONGITUDINAL JOINT IN THE NEWLY PLACED OVERLAY SHALL BE SAWED PRIOR TO TRAFFIC BEING PLACED ON THE OVERLAY. THE JOINT SHALL BE CLEANED OF ALL DEBRIS BEFORE THE SEALANT IS APPLIED. THE JOINT SEALER MATERIAL SHALL CONFORM TO THE REQUIREMENTS OF TYPE SL LOW MODULUS SILICONE SEALANT.

VERIFY HORIZONTAL DIMENSION FROM \bar{C} MEDIAN TO EXISTING LONGITUDINAL DECK CONSTRUCTION JOINT AT FILL FACE OF END BENTS AND \bar{C} JOINT AT BENTS.

THE CONTRACTOR SHALL ENSURE THAT THE SAWCUT FOLLOWS THE LINE OF THE EXISTING LONGITUDINAL CONSTRUCTION JOINT.

PROJECT NO. I-5997
 WAKE COUNTY
 BRIDGE NO. 910263 & 910264

STATE OF NORTH CAROLINA
 DEPARTMENT OF TRANSPORTATION
 RALEIGH
 TYPICAL SECTION AND SURFACE PREPARATION DETAILS



DocuSigned by:
 Eric B. Nelson
 1/12/2022
 ACB808219D74CD

DRAWN BY : J. MYA DATE : 07/2021
 CHECKED BY : J. YANACCONI DATE : 09/2021
 DESIGN ENGINEER OF RECORD : R. NELSON DATE : 09/2021

PLANS PREPARED BY:
Gannett Fleming
 Excellence Delivered As Promised
 One Glenwood Avenue
 Suite 900
 Raleigh, NC 27603
 (919) 420-7660
 NC Lic. No. F-0270

DOCUMENT NOT CONSIDERED FINAL UNLESS ALL SIGNATURES COMPLETED

REVISIONS						SHEET NO.
NO.	BY:	DATE:	NO.	BY:	DATE:	S-35
1			3			TOTAL SHEETS
2			4			82