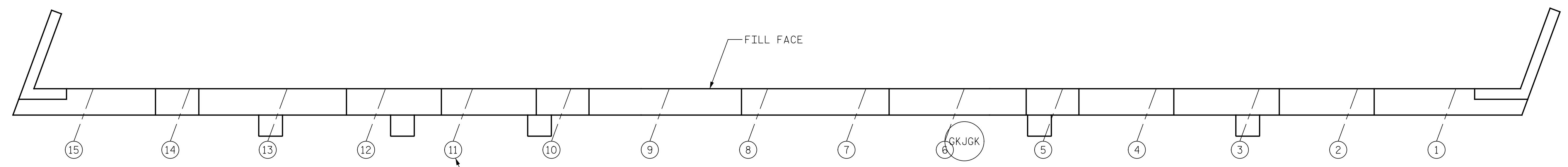
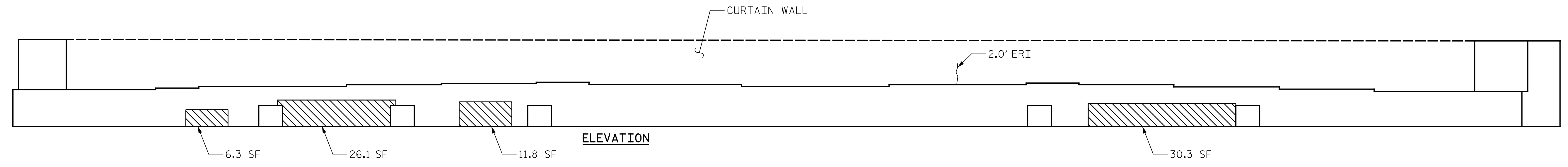


p:\gfnnet-pw.bentley.com\gfnnet-pw-01\Documents\Projects\67945\Phase 003 - I-5997 Rehab\Structures\CAD\2.0 100% Plans\401\_023\_15997\_SMU\_E01\_910242\_010 11/22/2021 9:16:47 AM pdf\_color\_gfcolt\_FS.plt Rowan.pen.tbl



PLAN



ELEVATION

REPAIR QUANTITY TABLE				
END BENT 1	QUANTITIES			
	ESTIMATE		ACTUAL	
<b>SHOTCRETE REPAIRS</b>	AREA SF	VOLUME CF	AREA SF	VOLUME CF
	CAP	74.5	28.7	
<b>CONCRETE REPAIRS</b>	AREA SF	VOLUME CF	AREA SF	VOLUME CF
	CAP	0.0	0.0	
<b>EPOXY RESIN INJECTION</b>	LN. FT		LN. FT	
	CAP	0.0		
CURTAIN WALL		2.0		

VALUES IN CHARTS REPRESENT ESTIMATED REPAIRS TOTALS AFTER REMOVAL OF SOUND CONCRETE, MIN. OF 1" BEHIND REBAR AND MIN. 2" CLEAR TO SAW CUT. SEE REPAIR DETAILS.

**NOTES:**

REPAIR LOCATIONS AND ESTIMATED QUANTITIES ARE GIVEN WITH THE BEST INFORMATION AVAILABLE. IF ADDITIONAL REPAIRS NOT SHOWN ON THE DRAWINGS ARE DEEMED NECESSARY BY THE ENGINEER, THE ENGINEER WILL NOTE ON THE DRAWINGS THE APPROXIMATE LOCATION AND DESCRIPTION OF THE REPAIRS AND ADJUST THE ACTUAL QUANTITIES ENTERED INTO THE REPAIR QUANTITY TABLE.

FOR REPAIRS, SEE "TYPICAL CAP AND COLUMN REPAIRS" SHEET.

FOR SHOTCRETE REPAIRS, SEE SPECIAL PROVISIONS.

FOR CONCRETE REPAIRS, SEE SPECIAL PROVISIONS.

SHOTCRETE REPAIRS MAY BE REPLACED WITH CONCRETE REPAIRS WITH THE APPROVAL OF THE ENGINEER.

FOR EPOXY RESIN INJECTION, SEE SPECIAL PROVISIONS.

CONCRETE REPAIRS TO THE BENT CAP MAY REQUIRE BRIDGE JACKING. FOR BRIDGE JACKING, SEE "JACKING DETAILS" SHEET.

- SHOTCRETE REPAIR
- CONCRETE REPAIRS (FORM & POUR)
- ERI - EPOXY RESIN INJECTION

PROJECT NO. I-5997  
WAKE COUNTY  
BRIDGE NO. 910242



STATE OF NORTH CAROLINA  
DEPARTMENT OF TRANSPORTATION  
RALEIGH

END BENT 1

REVISIONS

NO.	BY:	DATE:	NO.	BY:	DATE:
1			3		
2			4		

SHEET NO.  
S-10  
TOTAL SHEETS  
82

DRAWN BY :	J. MYA	DATE :	07/2021
CHECKED BY :	J. YANACCONE	DATE :	09/2021
DESIGN ENGINEER OF RECORD:	R. NELSON	DATE :	09/2021

PLANS PREPARED BY:  
  
One Glenwood Avenue  
Suite 900  
Raleigh, NC 27603  
(919) 420-7660  
NC Lic. No. F-0270

DOCUMENT NOT CONSIDERED FINAL UNLESS ALL SIGNATURES COMPLETED