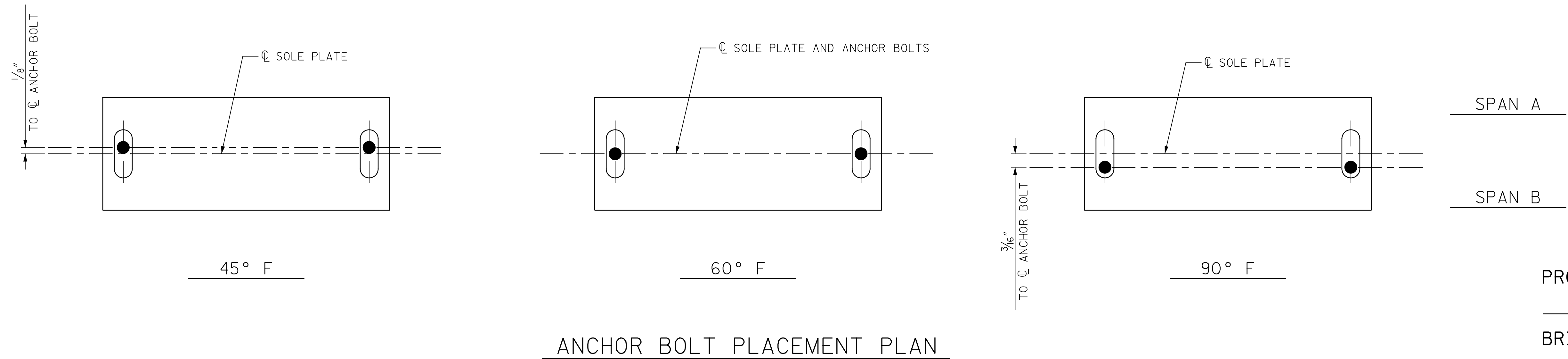
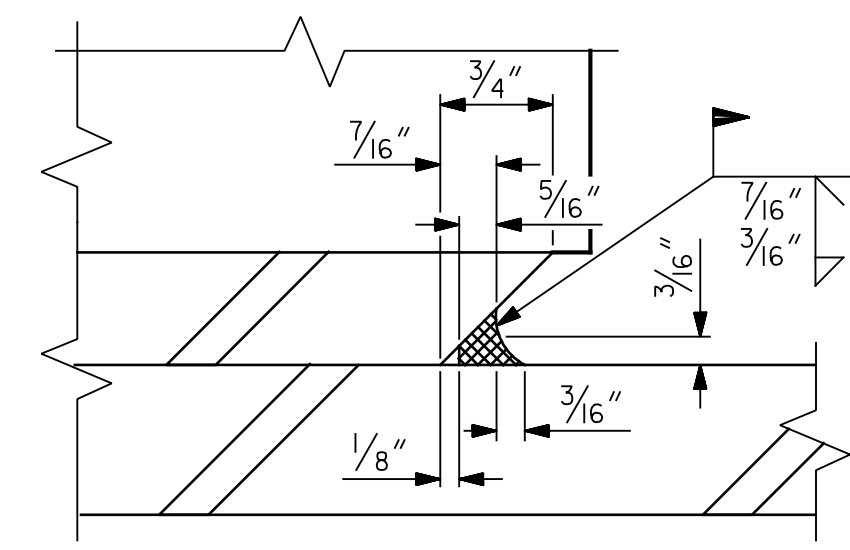
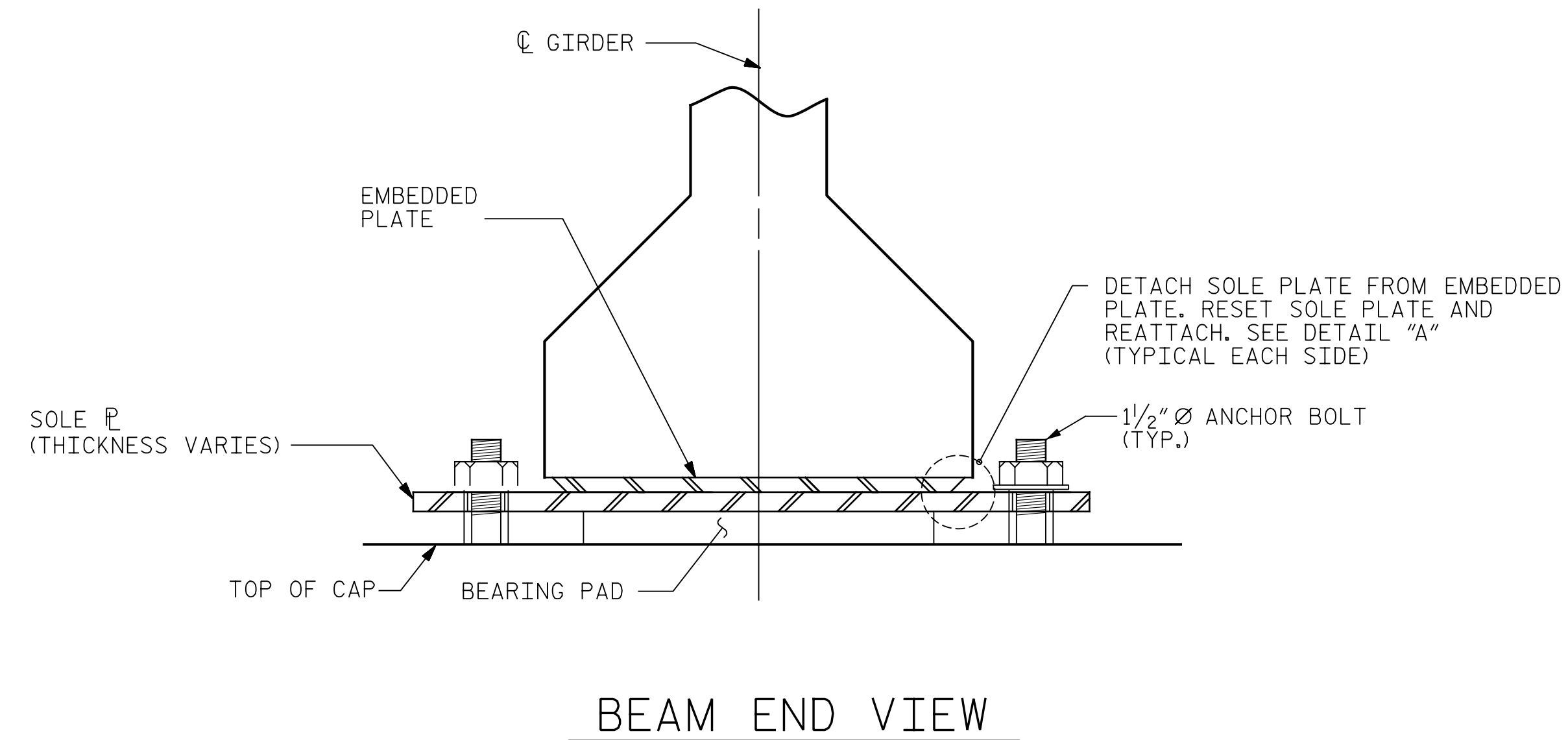
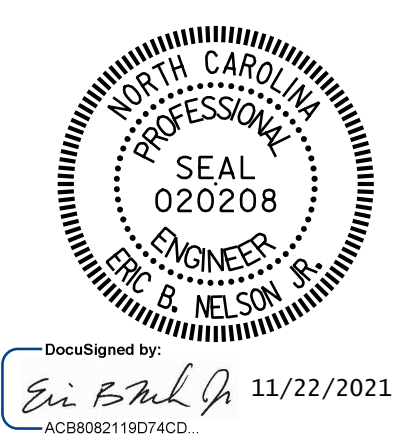


p:\gfn\p-w\ben\ben\p-w-01\Documents\Projects\67945\Phase 003 - I-5997 Rehab\Structures\CAD\2.0 100% Plans\401_021_I5997_SMU_RBD_910242_009
 11/22/2021 9:16:30 AM pdf_color_gfclt_FS.plt Rowan.pen.tbl



NOTES:
 THE EXISTING SOLE PLATES SHALL BE DETACHED AND RESET AS SHOWN.
 LOOSEN OR REMOVE EXISTING ANCHOR BOLT NUTS AS REQUIRED TO ALLOW JACKING OF GIRDERS.
 WITH GIRDERS IN A JACKED AND SUPPORTED CONDITION, DETACH EXISTING SOLE PLATES. FOR JACKING DETAILS, SEE "JACKING DETAILS" SHEET.
 RESET SOLE PLATE AS SHOWN AND LOWER GIRDER ONTO THE EXISTING SOLE PLATE AND ELASTOMERIC BEARING.
 WELD THE SOLE PLATE TO THE PLATE EMBEDDED INTO THE CONCRETE GIRDER.
 PRIOR TO WELDING, GRIND THE GALVANIZED SURFACE OF THE PORTION OF THE EMBEDDED PLATE AND SOLE PLATE THAT ARE TO BE WELDED. AFTER WELDING, DAMAGED GALVANIZED SURFACES SHALL BE REPAIRED IN ACCORDANCE WITH THE STANDARD SPECIFICATIONS.
 WHEN WELDING THE SOLE PLATE TO THE EMBEDDED PLATE IN THE GIRDER, USE TEMPERATURE INDICATING WAX PENS, OR OTHER SUITABLE MEANS, TO ENSURE THAT THE TEMPERATURE OF THE SOLE PLATE DOES NOT EXCEED 300°F. TEMPERATURES ABOVE THIS MAY DAMAGE THE ELASTOMER.
 TIGHTEN ANCHOR BOLT NUTS TO FINGER TIGHT AND THEN BACK THEM OFF 1/2 TURN.
 FOR RESET BEARINGS, SEE SPECIAL PROVISIONS.
 FOR BRIDGE JACKING, SEE SPECIAL PROVISIONS.



STATE OF NORTH CAROLINA
 DEPARTMENT OF TRANSPORTATION
 RALEIGH
RESET BEARING DETAILS

DRAWN BY : M. LEE DATE : 09/2021
 CHECKED BY : J. YANNACCONE DATE : 09/2021
 DESIGN ENGINEER OF RECORD : R. NELSON DATE : 09/2021

PLANS PREPARED BY:
Gannett Fleming
 Excellence Delivered As Promised
 One Glenwood Avenue
 Suite 900
 Raleigh, NC 27603
 (919) 420-7660
 NC Lic. No. F-0270

DOCUMENT NOT CONSIDERED FINAL UNLESS ALL SIGNATURES COMPLETED

REVISIONS						SHEET NO.
NO.	BY:	DATE:	NO.	BY:	DATE:	
1			3			TOTAL SHEETS
2			4			82