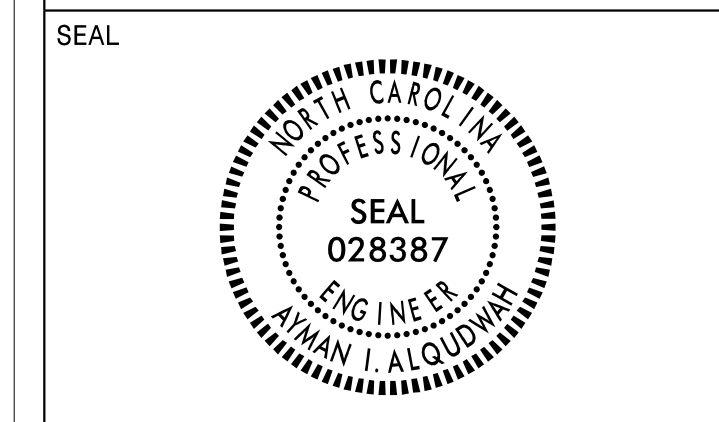


APPROVED: *Asman Aljoudah*

DATE: Dec 7, 2021



DOCUMENT NOT CONSIDERED FINAL UNLESS ALL SIGNATURES COMPLETED

**SIGN NUMBER:** 29A,32A **BACKG COLOR:** Green **DESIGN BY:** MT **CHECKED BY:** **Aug 03, 2021**  
**TYPE:** B (OVHD) **COPY COLOR:** White **PROJECT ID:** I-5997 **LOCATION:** **DIV:** 5

**QUANTITY:** 2

SYMBOL	X	Y	WID	HT

**SIGN WIDTH:** 7'-6" **HEIGHT:** 2'-6" **TOTAL AREA:** 18.8 Sq.Ft.

**BORDER TYPE:** FLUSH **RECESS:** 0" **WIDTH:** 2" **RADII:** 3"

**NO. Z BARS:** 2 **MAT'L:** 0.125" (3.2 mm) ALUMINUM **LENGTH:** 82.0

**USE NOTES:** 1,2

- Legend and border(except those that are colored black) shall be direct applied Grade A sheeting.
- Background shall be Grade C reflective sheeting.

Spacing Factor is 1 unless specified otherwise

**LETTER POSITIONS**

Letter spacings are to start of next letter

Series/Size	Text Length	E	X	I	T	1	0			
E 2000	8.1	16	8.8	10.7	3.5	7.5	15	8	4.5	16

FILENAME: I-5997 Map NORTH CAROLINA D.O.T. SIGN DETAIL

**SIGN NUMBER:** 24A,28A,30A,35A **BACKG COLOR:** Green **DESIGN BY:** MT **CHECKED BY:** **Aug 03, 2021**  
**TYPE:** B (OVHD) **COPY COLOR:** White **PROJECT ID:** I-5997 **LOCATION:** **DIV:** 5

**QUANTITY:** 4

SYMBOL	X	Y	WID	HT

**SIGN WIDTH:** 8'-6" **HEIGHT:** 2'-6" **TOTAL AREA:** 21.3 Sq.Ft.

**BORDER TYPE:** FLUSH **RECESS:** 0" **WIDTH:** 2" **RADII:** 3"

**NO. Z BARS:** 2 **MAT'L:** 0.125" (3.2 mm) ALUMINUM **LENGTH:** 94.0

**USE NOTES:** 1,2

- Legend and border(except those that are colored black) shall be direct applied Grade A sheeting.
- Background shall be Grade C reflective sheeting.

Spacing Factor is 1 unless specified otherwise

**LETTER POSITIONS**

Letter spacings are to start of next letter

Series/Size	Text Length	E	X	I	T	1	0			
E 2000	8.1	17.9	8.9	10.7	3.5	7.5	15	8	12.6	17.9

FILENAME: I-5997 Map NORTH CAROLINA D.O.T. SIGN DETAIL

**SIGN NUMBER:** 29B **BACKG COLOR:** Green **DESIGN BY:** MT **CHECKED BY:** **Aug 03, 2021**  
**TYPE:** A (OVHD) **COPY COLOR:** White **PROJECT ID:** I-5997 **LOCATION:** **DIV:** 5

**QUANTITY:** 1

SYMBOL	X	Y	WID	HT
M_1	68.5	141.4	36	36
M_1	138.2	141.4	45	36

**SIGN WIDTH:** 19'-6" **HEIGHT:** 19'-0" **TOTAL AREA:** 370.5 Sq.Ft.

**BORDER TYPE:** FLUSH **RECESS:** 0" **WIDTH:** 2" **RADII:** 12"

**NO. Z BARS:** 6 **MAT'L:** 0.125" (3.2 mm) ALUMINUM **LENGTH:** 226.0

**USE NOTES:** 1,2,3

- Legend and border(except those that are colored black) shall be direct applied Grade A sheeting.
- Background shall be Grade C reflective sheeting.
- Shields: A, B, and C type arrows shall be Grade A reflective sheeting on 0.032" (0.8mm) aluminum and demountable.

Spacing Factor is 1 unless specified otherwise

**LETTER POSITIONS**

Letter spacings are to start of next letter

Series/Size	Text Length	N	O	R	T	H									
E 2000	71.4	90.8	15.6	16.1	13.8	15.8	12.2	111.8							
EM 2000	196.3	C	a	p	i	t	a	l	B	l	v	d			
EM 2000	156	39	16	17	15.5	8	12	17	3.2	16	17.4	7.8	15.5	10.6	39
EM 2000	153.9	40	19.4	17	14.1	10.6	16	14.7	15.8	10.4	13.8	13.9	8.3	40	
EM 2000	123.5	L	o	u	i	s	b	u	r	g					
E 2000	92.6	55.2	13.9	15.8	17	7.8	15.5	15.5	17	18.4	10.6	55.2			
E 2000	92.6	1	M	I	L	E									
E 2000	92.6	80.7	4.5	15	12	4.4	9.2	7.5	80.7						

FILENAME: I-5997 Map NORTH CAROLINA D.O.T. SIGN DETAIL

**SIGN NUMBER:** 24B **BACKG COLOR:** Green **DESIGN BY:** MT **CHECKED BY:** **Aug 03, 2021**  
**TYPE:** A (OVHD) **COPY COLOR:** White **PROJECT ID:** I-5997 **LOCATION:** **DIV:** 5

**QUANTITY:** 1

SYMBOL	X	Y	WID	HT
AR00N	122.6	6	12	22

**SIGN WIDTH:** 24'-0" **HEIGHT:** 7'-0" **TOTAL AREA:** 168.0 Sq.Ft.

**BORDER TYPE:** FLUSH **RECESS:** 0" **WIDTH:** 2" **RADII:** 9"

**NO. Z BARS:** 2 **MAT'L:** 0.125" (3.2 mm) ALUMINUM **LENGTH:** 280.0

**USE NOTES:** 1,2

- Legend and border(except those that are colored black) shall be direct applied Grade C sheeting.
- Background shall be Grade C reflective sheeting.
- Bottom panel shall be yellow Grade C sheeting. Legend shall be direct applied black non-reflective sheeting. Yellow panel is:

Spacing Factor is 1 unless specified otherwise

**LETTER POSITIONS**

Letter spacings are to start of next letter

Series/Size	Text Length	W	a	k	e	F	o	r	e	s	t	M	i	l	e		
EM 2000	196.3	45.6	19.4	17	14.1	15.6	16	14.7	15.8	10.4	13.8	13.9	8.3	16	15.8	10.6	45.6
E 2000	73.1	107.5	25	15	12	4.4	9.2	7.5	107.5								
EM 2000	37	73.6	10.6	13	4.6	8.9	177.4										
EM 2000	47.8	166.6	13	12.1	9.6	12.1	73.6										

FILENAME: I-5997 Map NORTH CAROLINA D.O.T. SIGN DETAIL

U:\1-5997\1-5997 Map.dgn  
 User:mmr0001

# SIGN DESIGNS