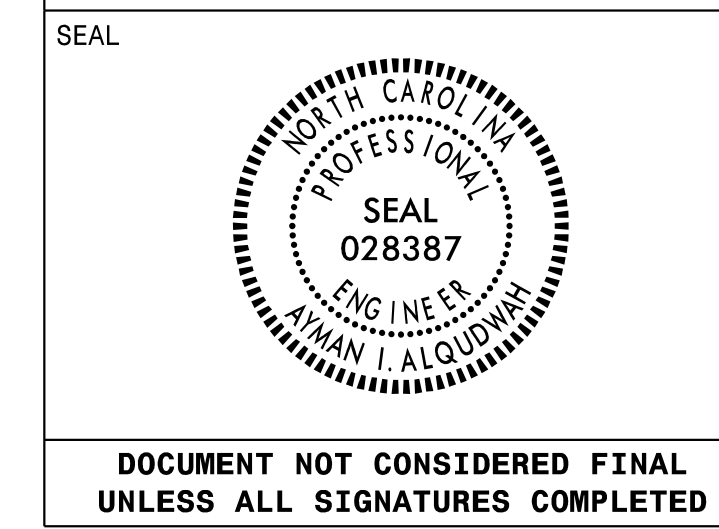


APPROVED: *Ayman Alqudwah*  
 DATE: Dec 7, 2021



**SIGN NUMBER:** 201  
**TYPE:** A  
**QUANTITY:** 1  
**SIGN WIDTH:** 6'-0"  
**HEIGHT:** 6'-0"  
**TOTAL AREA:** 36.0 Sq.Ft.  
**BORDER TYPE:** FLUSH  
**RECESS:** 0"  
**WIDTH:** 1.5"  
**RADII:** 6"  
**NO. Z BARS:** 2  
**LENGTH:** 64.0

**BACKG COLOR:** Green  
**COPY COLOR:** White

SYMBOL	X	Y	WID	HT
AR_Type A	43	12	18.6	28.2

**MAT'L:** 0.125" (3.2 mm) ALUMINUM

**DESIGN BY:** MT  
**PROJECT ID:** I-5997  
**CHECKED BY:**  
**LOCATION:**  
**Aug 03, 2021**  
**DIV:** 5

**BORDER**  
R=6"  
TH=1.5"

USE NOTES: 1,2,3

- Legend and border(except those that are colored black) shall be direct applied Grade C sheeting.
- Background shall be Grade C reflective sheeting.
- Arrow shall be Grade C reflective sheeting on 0.032" aluminum and demountable.

Spacing Factor is 1 unless specified otherwise

**LETTER POSITIONS**

Letter spacings are to start of next letter										Series/Size
										Text Length
E	X	I	T							E 2000
15.6	10.7	12.8	4.2	9	17.6					36.7
6										E 2000
14.1	14.6	40.4								14.6

FILENAME: I-5997 Map NORTH CAROLINA D.O.T. SIGN DETAIL

**SIGN NUMBER:** 202  
**TYPE:** A  
**QUANTITY:** 1  
**SIGN WIDTH:** 6'-0"  
**HEIGHT:** 6'-0"  
**TOTAL AREA:** 36.0 Sq.Ft.  
**BORDER TYPE:** FLUSH  
**RECESS:** 0"  
**WIDTH:** 1.5"  
**RADII:** 6"  
**NO. Z BARS:** 2  
**LENGTH:** 64.0

**BACKG COLOR:** Green  
**COPY COLOR:** White

SYMBOL	X	Y	WID	HT
AR_Type A	43	12	18.6	28.2

**MAT'L:** 0.125" (3.2 mm) ALUMINUM

**DESIGN BY:** MT  
**PROJECT ID:** I-5997  
**CHECKED BY:**  
**LOCATION:**  
**Aug 03, 2021**  
**DIV:** 5

**BORDER**  
R=6"  
TH=1.5"

USE NOTES: 1,2,3

- Legend and border(except those that are colored black) shall be direct applied Grade C sheeting.
- Background shall be Grade C reflective sheeting.
- Arrow shall be Grade C reflective sheeting on 0.032" aluminum and demountable.

Spacing Factor is 1 unless specified otherwise

**LETTER POSITIONS**

Letter spacings are to start of next letter										Series/Size
										Text Length
E	X	I	T							E 2000
17.6	10.7	12.8	4.2	9	17.6					36.7
7										E 2000
14.1	14.6	40.4								14.6

FILENAME: I-5997 Map NORTH CAROLINA D.O.T. SIGN DETAIL

**SIGN NUMBER:** 207  
**TYPE:** A  
**QUANTITY:** 1  
**SIGN WIDTH:** 7'-6"  
**HEIGHT:** 6'-0"  
**TOTAL AREA:** 45.0 Sq.Ft.  
**BORDER TYPE:** FLUSH  
**RECESS:** 0"  
**WIDTH:** 1.5"  
**RADII:** 6"  
**NO. Z BARS:** 2  
**LENGTH:** 82.0

**BACKG COLOR:** Green  
**COPY COLOR:** White

SYMBOL	X	Y	WID	HT
AR_Type A	59.5	17	18.6	28.2

**MAT'L:** 0.125" (3.2 mm) ALUMINUM

**DESIGN BY:** MT  
**PROJECT ID:** I-5997  
**CHECKED BY:**  
**LOCATION:**  
**Aug 03, 2021**  
**DIV:** 5

**BORDER**  
R=6"  
TH=1.5"

USE NOTES: 1,2,3

- Legend and border(except those that are colored black) shall be direct applied Grade C sheeting.
- Background shall be Grade C reflective sheeting.
- Arrow shall be Grade C reflective sheeting on 0.032" aluminum and demountable.

Spacing Factor is 1 unless specified otherwise

**LETTER POSITIONS**

Letter spacings are to start of next letter										Series/Size
										Text Length
E	X	I	T							E 2000
26.6	10.7	12.8	4.2	9	26.6					36.7
7	A									E 2000
12.6	17.1	18.4	42							35.5

FILENAME: I-5997 Map NORTH CAROLINA D.O.T. SIGN DETAIL

**SIGN NUMBER:** 208  
**TYPE:** A  
**QUANTITY:** 1  
**SIGN WIDTH:** 7'-6"  
**HEIGHT:** 6'-0"  
**TOTAL AREA:** 45.0 Sq.Ft.  
**BORDER TYPE:** FLUSH  
**RECESS:** 0"  
**WIDTH:** 1.5"  
**RADII:** 6"  
**NO. Z BARS:** 2  
**LENGTH:** 82.0

**BACKG COLOR:** Green  
**COPY COLOR:** White

SYMBOL	X	Y	WID	HT
AR_Type A	59.5	17	18.6	28.2

**MAT'L:** 0.125" (3.2 mm) ALUMINUM

**DESIGN BY:** MT  
**PROJECT ID:** I-5997  
**CHECKED BY:**  
**LOCATION:**  
**Aug 03, 2021**  
**DIV:** 5

**BORDER**  
R=6"  
TH=1.5"

USE NOTES: 1,2,3

- Legend and border(except those that are colored black) shall be direct applied Grade C sheeting.
- Background shall be Grade C reflective sheeting.
- Arrow shall be Grade C reflective sheeting on 0.032" aluminum and demountable.

Spacing Factor is 1 unless specified otherwise

**LETTER POSITIONS**

Letter spacings are to start of next letter										Series/Size
										Text Length
E	X	I	T							E 2000
26.6	10.7	12.8	4.2	9	26.6					36.7
7	B									E 2000
12.6	16.7	14.6	44.1							33.3

FILENAME: I-5997 Map NORTH CAROLINA D.O.T. SIGN DETAIL

U:\1-5997\1-5997 Map.dgn  
 User: mmr0001