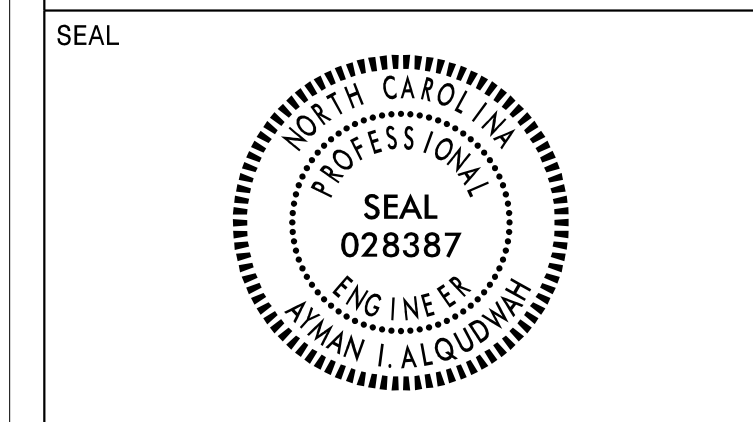


APPROVED: *Ayman Alqodwah*

DATE: Dec 7, 2021



DOCUMENT NOT CONSIDERED FINAL UNLESS ALL SIGNATURES COMPLETED

SIGN NUMBER: 20A,22A,26A,27A,31A **BACKG COLOR:** Green
TYPE: B (OVHD) **COPY COLOR:** White
QUANTITY: 5

SYMBOL	X	Y	WID	HT

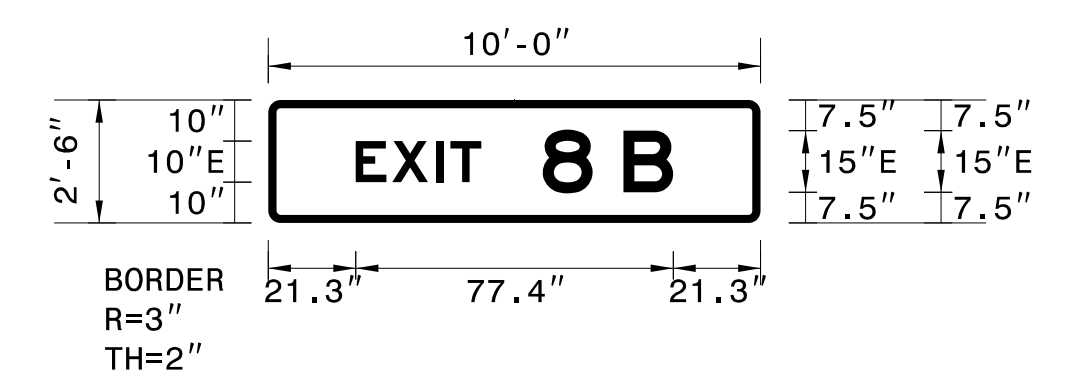
SIGN WIDTH: 10'-0"
HEIGHT: 2'-6"
TOTAL AREA: 25.0 Sq.Ft.

BORDER TYPE: FLUSH
RECESS: 0"
WIDTH: 2"
RADII: 3"

NO. Z BARS: 2
LENGTH: 112.0

MAT'L: 0.125" (3.2 mm) ALUMINUM

DESIGN BY: MT **CHECKED BY:** MT **Aug 02, 2021**
PROJECT ID: I-5997 **LOCATION:** **DIV:** 5



USE NOTES: 1,2
 1. Legend and border(except those that are colored black) shall be direct applied Grade A sheeting.
 2. Background shall be Grade C reflective sheeting.

Spacing Factor is 1 unless specified otherwise

LETTER POSITIONS

Letter spacings are to start of next letter

Series/Size Text Length	E	X	I	T	B	A														
E 2000 71.4	21.3	8.9	10.7	3.5	7.5	15	12.2	7.5	12.2	21.3										

FILENAME: I-5997 Map **NORTH CAROLINA D.O.T. SIGN DETAIL**

SIGN NUMBER: 21A,23A,25A **BACKG COLOR:** Green
TYPE: B (OVHD) **COPY COLOR:** White
QUANTITY: 3

SYMBOL	X	Y	WID	HT

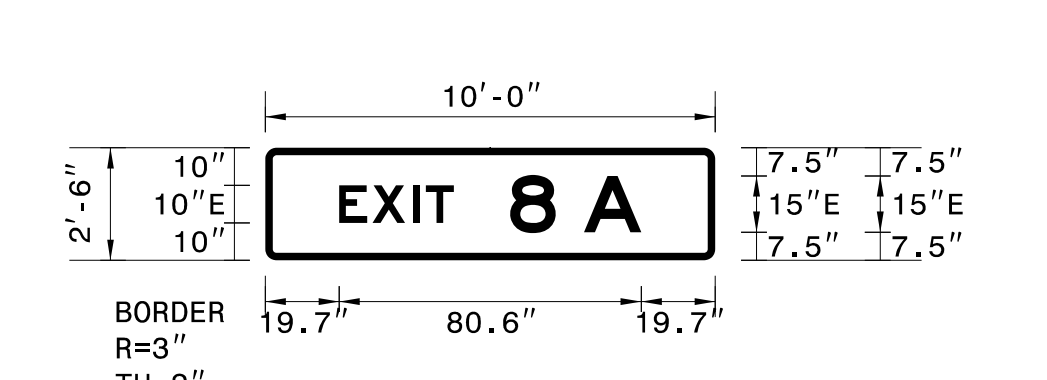
SIGN WIDTH: 10'-0"
HEIGHT: 2'-6"
TOTAL AREA: 25.0 Sq.Ft.

BORDER TYPE: FLUSH
RECESS: 0"
WIDTH: 2"
RADII: 3"

NO. Z BARS: 2
LENGTH: 112.0

MAT'L: 0.125" (3.2 mm) ALUMINUM

DESIGN BY: MT **CHECKED BY:** MT **Aug 02, 2021**
PROJECT ID: I-5997 **LOCATION:** **DIV:** 5



USE NOTES: 1,2
 1. Legend and border(except those that are colored black) shall be direct applied Grade A sheeting.
 2. Background shall be Grade C reflective sheeting.

Spacing Factor is 1 unless specified otherwise

LETTER POSITIONS

Letter spacings are to start of next letter

Series/Size Text Length	E	X	I	T	B	A														
E 2000 86.6	19.7	8.9	10.7	3.5	7.5	15	12.2	7.5	15.3	19.7										

FILENAME: I-5997 Map **NORTH CAROLINA D.O.T. SIGN DETAIL**

SIGN NUMBER: 20B **BACKG COLOR:** Green
TYPE: A (OVHD) **COPY COLOR:** White
QUANTITY: 1

SYMBOL	X	Y	WID	HT

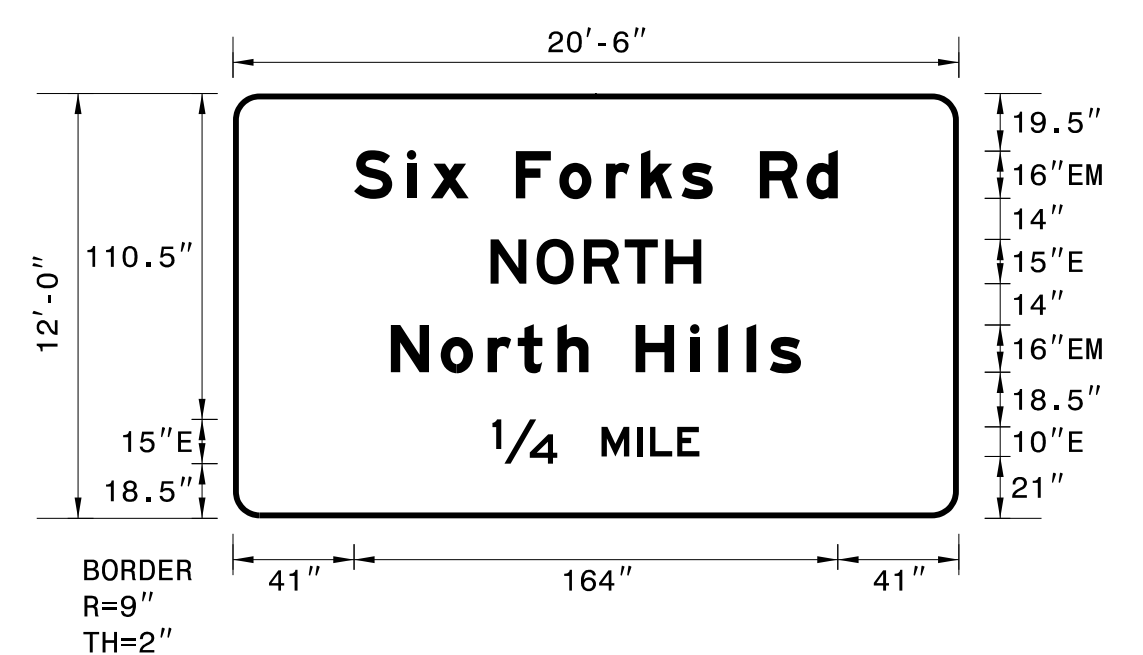
SIGN WIDTH: 20'-6"
HEIGHT: 12'-0"
TOTAL AREA: 246.0 Sq.Ft.

BORDER TYPE: FLUSH
RECESS: 0"
WIDTH: 2"
RADII: 9"

NO. Z BARS: 3
LENGTH: 238.0

MAT'L: 0.125" (3.2 mm) ALUMINUM

DESIGN BY: MT **CHECKED BY:** MT **Aug 02, 2021**
PROJECT ID: I-5997 **LOCATION:** **DIV:** 5



USE NOTES: 1,2
 1. Legend and border(except those that are colored black) shall be direct applied Grade A sheeting.
 2. Background shall be Grade C reflective sheeting.

Spacing Factor is 1 unless specified otherwise

LETTER POSITIONS

Letter spacings are to start of next letter

Series/Size Text Length	S	I	X	F	O	R	K	S	R	D										
E 2000 164	41	17.9	8.2	12.8	16	14.7	15.8	11.8	13.8	10.6	16	15.8	10.6	41						
E 2000 71.4	87.3	15.6	16.1	13.8	13.8	12.2	87.3													
E 2000 139	53.5	17	15.8	10.2	13.4	10.6	16	18.4	9.8	9.8	7.8	10.6	53.5							
E 2000 76.1	14	88	22	15	12	4.4	9.2	7.5	88											

FILENAME: I-5997 Map **NORTH CAROLINA D.O.T. SIGN DETAIL**

SIGN NUMBER: 21B, 23B **BACKG COLOR:** Green
TYPE: A (OVHD) **COPY COLOR:** White
QUANTITY: 2

SYMBOL	X	Y	WID	HT

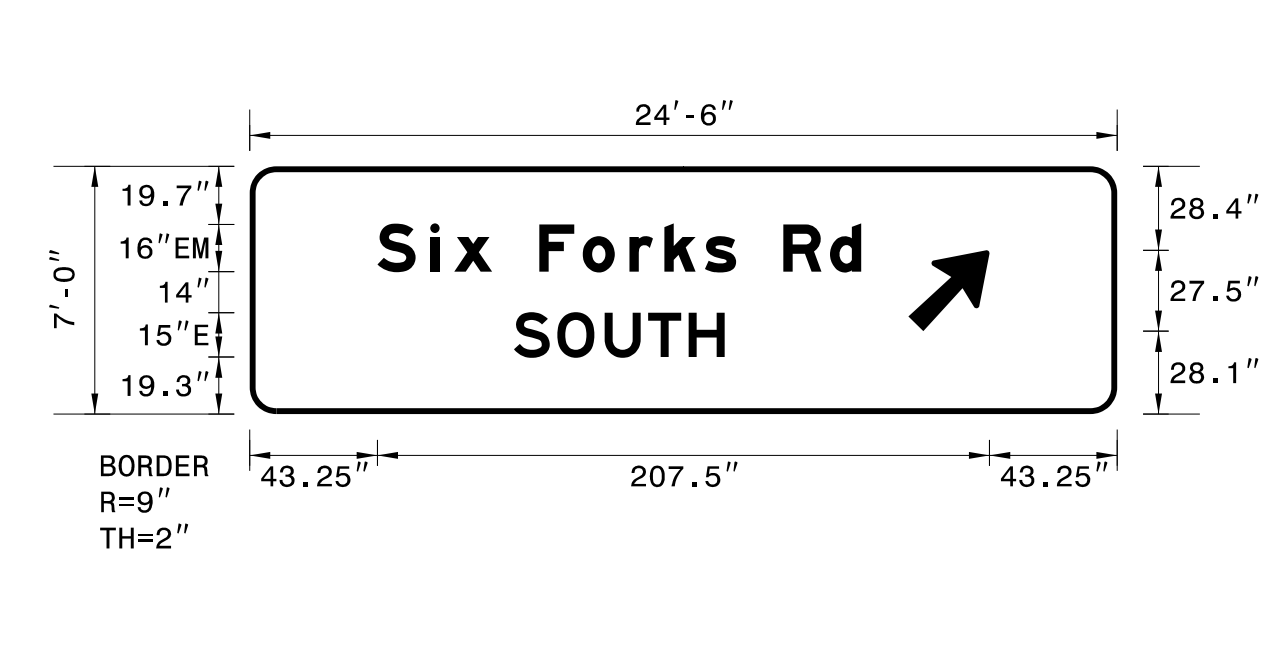
SIGN WIDTH: 24'-6"
HEIGHT: 7'-0"
TOTAL AREA: 171.5 Sq.Ft.

BORDER TYPE: FLUSH
RECESS: 0"
WIDTH: 2"
RADII: 9"

NO. Z BARS: 2
LENGTH: 286.0

MAT'L: 0.125" (3.2 mm) ALUMINUM

DESIGN BY: MT **CHECKED BY:** MT **Aug 02, 2021**
PROJECT ID: I-5997 **LOCATION:** **DIV:** 5



USE NOTES: 1,2
 1. Legend and border(except those that are colored black) shall be direct applied Grade A sheeting.
 2. Background shall be Grade C reflective sheeting.
 3. Shields; A, B, and C type arrows shall be Grade A reflective sheeting on 0.032" (0.8mm) aluminum and demountable.

Spacing Factor is 1 unless specified otherwise

LETTER POSITIONS

Letter spacings are to start of next letter

Series/Size Text Length	S	I	X	F	O	R	K	S	R	D										
E 2000 164	43.5	17.9	8.2	12.8	16	14.7	15.8	11.8	13.8	10.6	16	15.8	10.6	164						
E 2000 71.4	88.6	14.7	16.1	14.7	13.8	12.2	133													

FILENAME: I-5997 Map **NORTH CAROLINA D.O.T. SIGN DETAIL**

U:\1-5997\1-5997 Map.dgn
 User:mttr0001
 12/01/21

SIGN DESIGNS