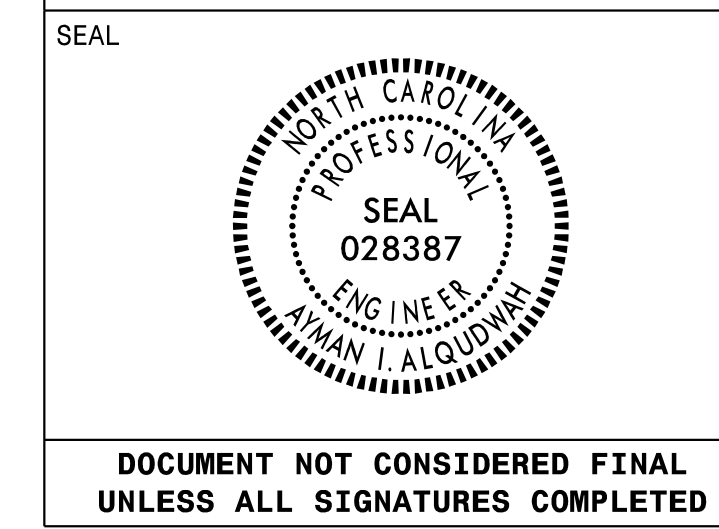


APPROVED: *Ayman Alqudwah*
DATE: Dec 7, 2021



DOCUMENT NOT CONSIDERED FINAL UNLESS ALL SIGNATURES COMPLETED

SIGN NUMBER: 14A,17A **BACKG COLOR:** Green
TYPE: B (OVHD) **COPY COLOR:** White
QUANTITY: 2

SYMBOL	X	Y	WID	HT

SIGN WIDTH: 10'-0"
HEIGHT: 2'-6"
TOTAL AREA: 25.0 Sq.Ft.

BORDER TYPE: FLUSH
RECESS: 0"
WIDTH: 2"
RADII: 3"

NO. Z BARS: 2
LENGTH: 112.0

MAT'L: 0.125" (3.2 mm) ALUMINUM

DESIGN BY: MT **CHECKED BY:** **Aug 02, 2021**
PROJECT ID: I-5997 **LOCATION:** **DIV:** 5

USE NOTES: 1,2
1. Legend and border(except those that are colored black) shall be direct applied Grade A sheeting.
2. Background shall be Grade C reflective sheeting.

Spacing Factor is 1 unless specified otherwise

LETTER POSITIONS

Letter spacings are to start of next letter											Series/Size
											Text Length
E	X	I	T	7	8						E 2000
21.3	8.9	10.7	3.5	7.5	15	12.2	7.5	12.2	21.3		77.4

FILENAME: I-5997 Map NORTH CAROLINA D.O.T. SIGN DETAIL

SIGN NUMBER: 12A,13A,16A **BACKG COLOR:** Green
TYPE: B (OVHD) **COPY COLOR:** White
QUANTITY: 3

SYMBOL	X	Y	WID	HT

SIGN WIDTH: 10'-0"
HEIGHT: 2'-6"
TOTAL AREA: 25.0 Sq.Ft.

BORDER TYPE: FLUSH
RECESS: 0"
WIDTH: 2"
RADII: 3"

NO. Z BARS: 2
LENGTH: 112.0

MAT'L: 0.125" (3.2 mm) ALUMINUM

DESIGN BY: MT **CHECKED BY:** **Aug 02, 2021**
PROJECT ID: I-5997 **LOCATION:** **DIV:** 5

USE NOTES: 1,2
1. Legend and border(except those that are colored black) shall be direct applied Grade C sheeting.
2. Background shall be Grade C reflective sheeting.

Spacing Factor is 1 unless specified otherwise

LETTER POSITIONS

Letter spacings are to start of next letter											Series/Size
											Text Length
E	X	I	T	7	A						E 2000
19.7	8.9	10.7	3.5	7.5	15	12.1	7.5	15.3	18.7		88.5

FILENAME: I-5997 Map NORTH CAROLINA D.O.T. SIGN DETAIL

SIGN NUMBER: 14B **BACKG COLOR:** Green
TYPE: A (OVHD) **COPY COLOR:** White
QUANTITY: 1

SYMBOL	X	Y	WID	HT
W1	88.4	146	36	36
W1-5-3-24-100	156.7	146	36	36
ARROW	46.7	8	32	22
ARROW	209.3	8	32	22

SIGN WIDTH: 24'-0"
HEIGHT: 19'-0"
TOTAL AREA: 456.0 Sq.Ft.

BORDER TYPE: FLUSH
RECESS: 0"
WIDTH: 2"
RADII: 12"

NO. Z BARS: 6
LENGTH: 280.0

MAT'L: 0.125" (3.2 mm) ALUMINUM

DESIGN BY: MT **CHECKED BY:** **Aug 02, 2021**
PROJECT ID: I-5997 **LOCATION:** **DIV:** 5

USE NOTES: 1,2,3,4
1. Legend and border(except those that are colored black) shall be direct applied Grade A sheeting.
2. Background shall be Grade C reflective sheeting.
3. Shields; A, B, and C type arrows shall be Grade A reflective sheeting on 0.032" (0.8mm) aluminum and demountable.
4. Bottom panel shall be yellow Grade C sheeting. Legend shall be direct applied black non-reflective sheeting. Yellow panel is:

Spacing Factor is 1 unless specified otherwise

LETTER POSITIONS

Letter spacings are to start of next letter											Series/Size						
											Text Length						
W	E	S	T								E 2000						
84.7	14.8	10.7	11	9	157.8						45.5						
W	O	R	T	H							E 2000						
146.2	12.5	12.8	11	11	9.7	84.7					57.1						
G	L	E	N	V	O	O	D	A	V	E	EM 2000						
56.1	17.8	8.2	15.5	15.2	19.5	14.4	14.4	10.6	16	18.2	15.5	10.6	56.1	175.8			
C	R	A	B	T	R	E	V	A	L	L	E	Y		EM 2000			
42.8	17.4	10.4	17	13.9	13.4	10.4	14.1	10.6	18	17.1	17	9.6	8.2	13.8	13.6	42.8	202.4
D	O	R	H	A	N												EM 2000
65.7	17.8	17	11.8	15.5	17	17.6	85.7										96.6
E	X	I	T	O	N	L	Y										E 2000
93.7	11.1	13.4	4.7	9	15	13.5	13.6	10.2	12.2	91.7							102.6

FILENAME: I-5997 Map NORTH CAROLINA D.O.T. SIGN DETAIL

SIGN NUMBER: 12B **BACKG COLOR:** Green
TYPE: A (OVHD) **COPY COLOR:** White
QUANTITY: 1

SYMBOL	X	Y	WID	HT
W1	73.7	83.2	36	36
W1-5-3-24-100	146.1	83.2	36	36
ARROW A	222.2	88	22.2	34.8

SIGN WIDTH: 25'-0"
HEIGHT: 13'-6"
TOTAL AREA: 337.5 Sq.Ft.

BORDER TYPE: FLUSH
RECESS: 0"
WIDTH: 2"
RADII: 12"

NO. Z BARS: 4
LENGTH: 292.0

MAT'L: 0.125" (3.2 mm) ALUMINUM

DESIGN BY: MT **CHECKED BY:** **Aug 02, 2021**
PROJECT ID: I-5997 **LOCATION:** **DIV:** 5

USE NOTES: 1,2,3
1. Legend and border(except those that are colored black) shall be direct applied Grade A sheeting.
2. Background shall be Grade C reflective sheeting.
3. Shields; A, B, and C type arrows shall be Grade A reflective sheeting on 0.032" (0.8mm) aluminum and demountable.

Spacing Factor is 1 unless specified otherwise

LETTER POSITIONS

Letter spacings are to start of next letter											Series/Size			
											Text Length			
E	A	S	T								E 2000			
69.7	10.3	13.6	11	9	186.3						43.6			
S	O	U	T	H							E 2000			
126.7	11.8	12.8	11.8	11	9.7	113.2					57.1			
G	L	E	N	V	O	O	D	A	V	E	EM 2000			
40.3	17.8	8.2	15.5	15.2	19.5	14.4	14.4	10.6	16	18.2	15.5	10.6	83.8	175.8
R	I	D	G	E	R	D								EM 2000
70.5	17.3	8.2	15.5	15.5	10.6	16	15.8	10.6	117					108.4

FILENAME: I-5997 Map NORTH CAROLINA D.O.T. SIGN DETAIL

I:\1-5997\1-5997 Map.dgn
User: mmr00001