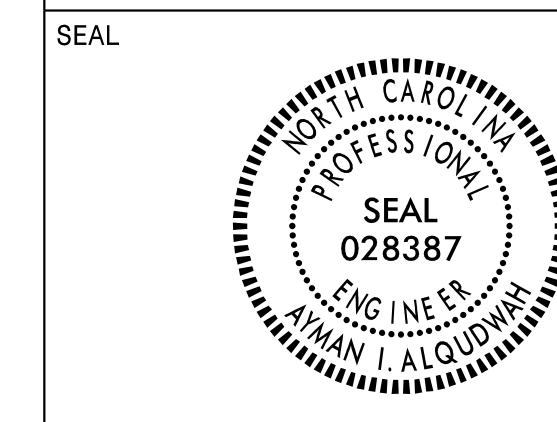


APPROVED: *Ayman Alqudwah*

DATE: Dec 7, 2021



DOCUMENT NOT CONSIDERED FINAL UNLESS ALL SIGNATURES COMPLETED

**SIGN NUMBER:** 7B      **BACKG COLOR:** Green  
**TYPE:** A (OVHD)      **COPY COLOR:** White  
**QUANTITY:** 1

SYMBOL	X	Y	WID	HT
Al_Type A	180	13.3	22.2	34.9

**SIGN WIDTH:** 18'-6"  
**HEIGHT:** 4'-6"  
**TOTAL AREA:** 83.3 Sq.Ft.

**BORDER TYPE:** FLUSH  
**RECESS:** 0"  
**WIDTH:** 2"  
**RADII:** 6"

**MAT'L:** 0.125" (3.2 mm) ALUMINUM

**NO. Z BARS:** 2  
**LENGTH:** 214.0

**DESIGN BY:** MT      **CHECKED BY:**      **Aug 03, 2021**  
**PROJECT ID:** I-5997      **LOCATION:**      **DIV:** 5

**USE NOTES:** 1,2,3

- Legend and border(except those that are colored black) shall be direct applied Grade A sheeting.
- Background shall be Grade C reflective sheeting.
- Shields; A, B, and C type arrows shall be Grade A reflective sheeting on 0.032" (0.8mm) aluminum and demountable.

Spacing Factor is 1 unless specified otherwise

**LETTER POSITIONS**

Letter spacings are to start of next letter										Series/Size
										Text Length
34.5	17.3	8.2	15.5	15.5	16.6	16	15.8	10.6	7.8	EM 2000
										108.4

FILENAME: I-5997 Map      NORTH CAROLINA D.O.T. SIGN DETAIL

**SIGN NUMBER:** 4A,6A,8A      **BACKG COLOR:** Green  
**TYPE:** B (OVHD)      **COPY COLOR:** White  
**QUANTITY:** 3

SYMBOL	X	Y	WID	HT
Al_Type A	100	143.3	36	36

**SIGN WIDTH:** 7'-6"  
**HEIGHT:** 2'-6"  
**TOTAL AREA:** 18.8 Sq.Ft.

**BORDER TYPE:** FLUSH  
**RECESS:** 0"  
**WIDTH:** 2"  
**RADII:** 3"

**MAT'L:** 0.125" (3.2 mm) ALUMINUM

**NO. Z BARS:** 2  
**LENGTH:** 82.0

**DESIGN BY:** MT      **CHECKED BY:**      **Aug 02, 2021**  
**PROJECT ID:** I-5997      **LOCATION:**      **DIV:** 5

**USE NOTES:** 1,2

- Legend and border(except those that are colored black) shall be direct applied Grade A sheeting.
- Background shall be Grade C reflective sheeting.

Spacing Factor is 1 unless specified otherwise

**LETTER POSITIONS**

Letter spacings are to start of next letter										Series/Size
										Text Length
16.1	8.8	10.7	3.5	7.5	15	12.2	16.1			EM 2000
										57.8

FILENAME: I-5997 Map      NORTH CAROLINA D.O.T. SIGN DETAIL

**SIGN NUMBER:** 6B      **BACKG COLOR:** Green  
**TYPE:** A (OVHD)      **COPY COLOR:** White  
**QUANTITY:** 1

SYMBOL	X	Y	WID	HT
Bl_4	100	143.3	36	36
Bl-5-2-24-100	192	143.3	36	36

**SIGN WIDTH:** 24'-0"  
**HEIGHT:** 17'-0"  
**TOTAL AREA:** 408.0 Sq.Ft.

**BORDER TYPE:** FLUSH  
**RECESS:** 0"  
**WIDTH:** 2"  
**RADII:** 12"

**MAT'L:** 0.125" (3.2 mm) ALUMINUM

**NO. Z BARS:** 6  
**LENGTH:** 280.0

**DESIGN BY:** MT      **CHECKED BY:**      **Aug 03, 2021**  
**PROJECT ID:** I-5997      **LOCATION:**      **DIV:** 5

**USE NOTES:** 1,2,3

- Legend and border(except those that are colored black) shall be direct applied Grade A sheeting.
- Background shall be Grade C reflective sheeting.
- Shields; A, B, and C type arrows shall be Grade A reflective sheeting on 0.032" (0.8mm) aluminum and demountable.

Spacing Factor is 1 unless specified otherwise

**LETTER POSITIONS**

Letter spacings are to start of next letter										Series/Size							
										Text Length							
56.1	17.8	8.2	15.5	15.2	19.5	14.4	14.4	10.6	16	19.2	15.5	10.6	56.1	EM 2000			
														175.8			
42.8	17.4	10.4	17	13.9	13.4	10.4	14.1	10.6	16	17.1	17	9.6	8.2	13.8	13.6	42.8	EM 2000
																	202.4
95.7	17.8	17	11.8	15.5	17	17.6	95.7										EM 2000
																	96.6
114																	E 2000
109	22	15	12	4.4	9.2	7.5	109										E 2000
																	70.1

FILENAME: I-5997 Map      NORTH CAROLINA D.O.T. SIGN DETAIL

**SIGN NUMBER:** 4B      **BACKG COLOR:** Green  
**TYPE:** A (OVHD)      **COPY COLOR:** White  
**QUANTITY:** 1

SYMBOL	X	Y	WID	HT
Bl_4	100	143.3	36	36
Bl-5-2-24-100	192	143.3	36	36

**SIGN WIDTH:** 24'-0"  
**HEIGHT:** 17'-0"  
**TOTAL AREA:** 408.0 Sq.Ft.

**BORDER TYPE:** FLUSH  
**RECESS:** 0"  
**WIDTH:** 2"  
**RADII:** 12"

**MAT'L:** 0.125" (3.2 mm) ALUMINUM

**NO. Z BARS:** 6  
**LENGTH:** 280.0

**DESIGN BY:** MT      **CHECKED BY:**      **Aug 03, 2021**  
**PROJECT ID:** I-5997      **LOCATION:**      **DIV:** 5

**USE NOTES:** 1,2,3

- Legend and border(except those that are colored black) shall be direct applied Grade A sheeting.
- Background shall be Grade C reflective sheeting.
- Shields; A, B, and C type arrows shall be Grade A reflective sheeting on 0.032" (0.8mm) aluminum and demountable.

Spacing Factor is 1 unless specified otherwise

**LETTER POSITIONS**

Letter spacings are to start of next letter										Series/Size							
										Text Length							
56.1	17.8	8.2	15.5	15.2	19.5	14.4	14.4	10.6	16	19.2	15.5	10.6	56.1	EM 2000			
														175.8			
42.8	17.4	10.4	17	13.9	13.4	10.4	14.1	10.6	16	17.1	17	9.6	8.2	13.8	13.6	42.8	EM 2000
																	202.4
95.7	17.8	17	11.8	15.5	17	17.6	95.7										EM 2000
																	96.6
114																	E 2000
109	22	15	12	4.4	9.2	7.5	109										E 2000
																	70.1

FILENAME: I-5997 Map      NORTH CAROLINA D.O.T. SIGN DETAIL

U:\1-5997\1-5997 Map.dgn  
 User:mmr0001

# SIGN DESIGNS