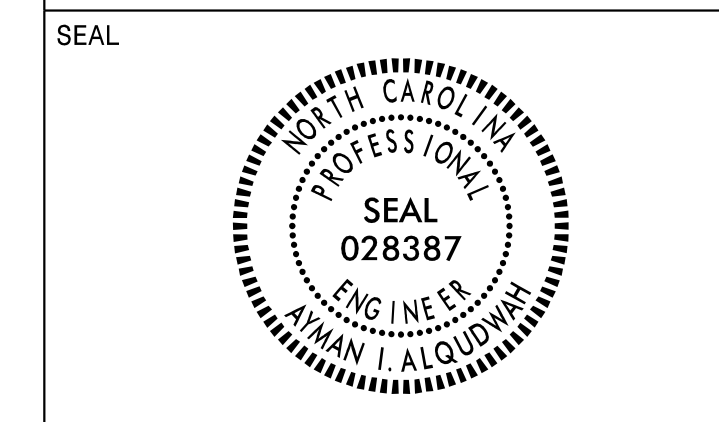


APPROVED: *Ayman Alqudwah*
F50ACSCAF98472

DATE: Dec 7, 2021



DOCUMENT NOT CONSIDERED FINAL
UNLESS ALL SIGNATURES COMPLETED

SIGN NUMBER: 2A,38A BACKG COLOR: Green
TYPE: B (OVHD) COPY COLOR: White

DESIGN BY: MT CHECKED BY: Jun 09, 2021
PROJECT ID: I-5997 LOCATION: DIV: 5

QUANTITY: 2

SYMBOL	X	Y	WID	HT

SIGN WIDTH: 7'-6"
HEIGHT: 2'-6"
TOTAL AREA: 18.8 Sq.Ft.

BORDER TYPE: FLUSH
RECESS: 0"
WIDTH: 2"
RADIUS: 3"

MAT'L: 0.125" (3.2 mm) ALUMINUM

NO. Z BARS: 2
LENGTH: 82.0

BORDER R=3" TH=2"

USE NOTES: 1,2
1. Legend and border(except those that are colored black) shall be direct applied Grade A sheeting.
2. Background shall be Grade C reflective sheeting.

Spacing Factor is 1 unless specified otherwise

LETTER POSITIONS

Letter spacings are to start of next letter											Series/Size
											Text Length
E	X	I	T	5							E 2000
16.1	8.9	10.7	3.5	7.5	15	12.2	16.1				57.8

FILENAME: I-5997 Map NORTH CAROLINA D.O.T. SIGN DETAIL

SIGN NUMBER: 1A,3A,5A,7A BACKG COLOR: Green
TYPE: B (OVHD) COPY COLOR: White

DESIGN BY: MT CHECKED BY: Jun 09, 2021
PROJECT ID: I-5997 LOCATION: DIV: 5

QUANTITY: 4

SYMBOL	X	Y	WID	HT

SIGN WIDTH: 7'-6"
HEIGHT: 2'-6"
TOTAL AREA: 18.8 Sq.Ft.

BORDER TYPE: FLUSH
RECESS: 0"
WIDTH: 2"
RADIUS: 3"

MAT'L: 0.125" (3.2 mm) ALUMINUM

NO. Z BARS: 2
LENGTH: 82.0

BORDER R=3" TH=2"

USE NOTES: 1,2
1. Legend and border(except those that are colored black) shall be direct applied Grade A sheeting.
2. Background shall be Grade C reflective sheeting.

Spacing Factor is 1 unless specified otherwise

LETTER POSITIONS

Letter spacings are to start of next letter											Series/Size
											Text Length
E	X	I	T	6							E 2000
16.1	8.9	10.7	3.5	7.5	15	12.2	16.1				57.8

FILENAME: I-5997 Map NORTH CAROLINA D.O.T. SIGN DETAIL

SIGN NUMBER: 2B BACKG COLOR: Green
TYPE: A (OVHD) COPY COLOR: White

DESIGN BY: MT CHECKED BY: Jun 15, 2021
PROJECT ID: I-5997 LOCATION: DIV: 5

QUANTITY: 1

SYMBOL	X	Y	WID	HT

SIGN WIDTH: 22'-6"
HEIGHT: 6'-6"
TOTAL AREA: 146.3 Sq.Ft.

BORDER TYPE: FLUSH
RECESS: 0"
WIDTH: 2"
RADIUS: 9"

MAT'L: 0.125" (3.2 mm) ALUMINUM

NO. Z BARS: 2
LENGTH: 262.0

BORDER R=9" TH=2"

USE NOTES: 1,2
1. Legend and border(except those that are colored black) shall be direct applied Grade A sheeting.
2. Background shall be Grade C reflective sheeting.

Spacing Factor is 1 unless specified otherwise

LETTER POSITIONS

Letter spacings are to start of next letter														Series/Size				
														Text Length				
L	a	k	e	B	o	o	n	e	T	r	a	i	l	EM 2000				
27.2	13.9	17	14.1	10.6	16	16	14.4	15.8	15.5	10.6	16	15.7	10.4	17	9.6	3.2	27.2	215.7
1/2	M	I	L	E														E 2000
100	22	15	12	4.4	9.2	7.5	100											70.1

FILENAME: I-5997 Map NORTH CAROLINA D.O.T. SIGN DETAIL

SIGN NUMBER: 1B BACKG COLOR: Green
TYPE: A (OVHD) COPY COLOR: White

DESIGN BY: MT CHECKED BY: Jun 15, 2021
PROJECT ID: I-5997 LOCATION: DIV: 5

QUANTITY: 1

SYMBOL	X	Y	WID	HT

SIGN WIDTH: 15'-0"
HEIGHT: 6'-6"
TOTAL AREA: 97.5 Sq.Ft.

BORDER TYPE: FLUSH
RECESS: 0"
WIDTH: 2"
RADIUS: 9"

MAT'L: 0.125" (3.2 mm) ALUMINUM

NO. Z BARS: 2
LENGTH: 172.0

BORDER R=9" TH=2"

USE NOTES: 1,2
1. Legend and border(except those that are colored black) shall be direct applied Grade A sheeting.
2. Background shall be Grade C reflective sheeting.

Spacing Factor is 1 unless specified otherwise

LETTER POSITIONS

Letter spacings are to start of next letter											Series/Size
											Text Length
R	i	d	g	e	R	d					EM 2000
35.3	17.3	8.2	15.5	15.5	10.6	16	15.8	10.6	35.3		109.4
1	M	I	L	E							E 2000
63.7	4.5	15	12	4.4	9.2	7.5	63.7				52.6

FILENAME: I-5997 Map NORTH CAROLINA D.O.T. SIGN DETAIL

I:\1-5997\1-5997 Map.dgn
User: mmr0001

SIGN DESIGNS