

**This electronic collection of documents is provided
for the convenience of the user
and is Not a Certified Document –**

**The documents contained herein were originally issued
and sealed by the individuals whose names and license
numbers appear on each page, on the dates appearing
with their signature on that page.**

**This file or an individual page
shall not be considered a certified document.**

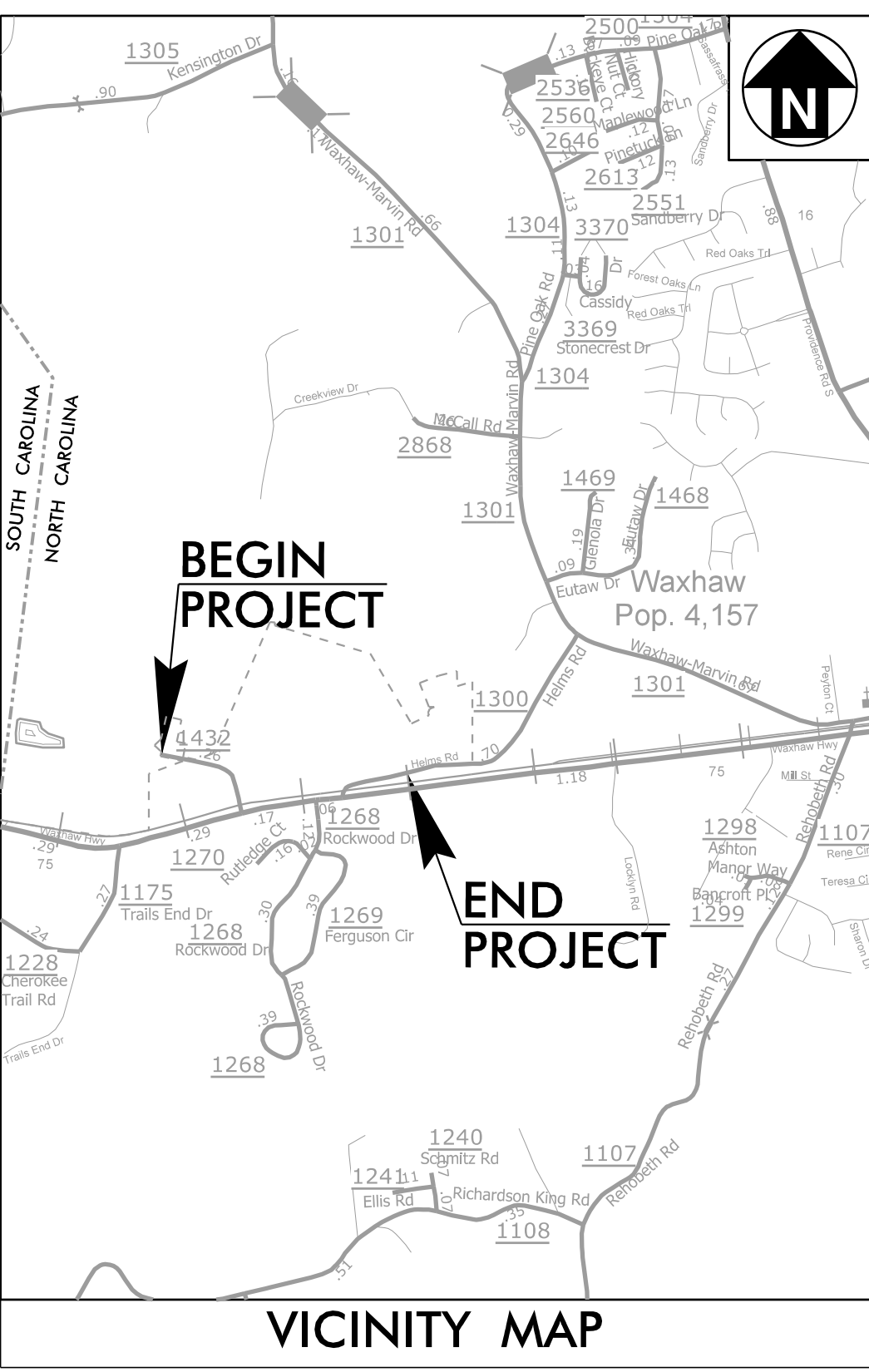
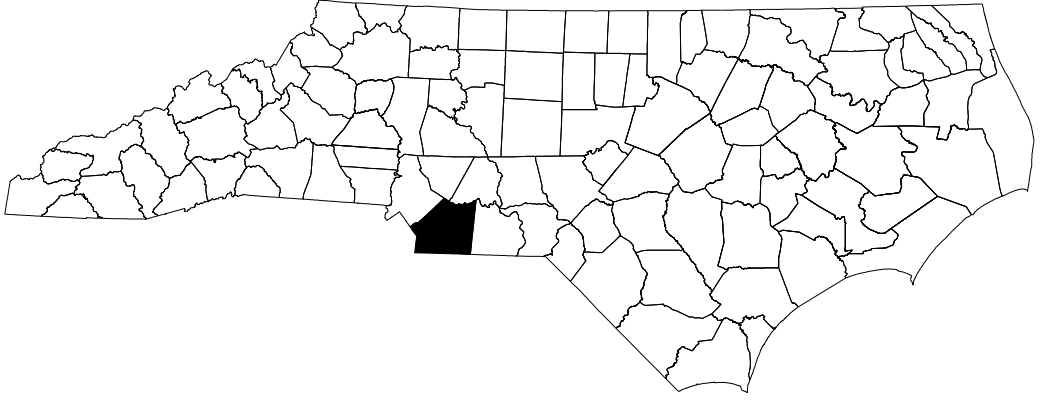
09.08/99

TIP PROJECT: Y-5500JC

STATE OF NORTH CAROLINA
RAIL DIVISION

T.I.P. NO.	SHEET NO.
Y-5500JC	UO-01

NOTE:
ALL UTILITY WORK SHOWN ON THIS SHEET WILL BE DONE BY OTHERS. NO PAYMENT WILL BE MADE TO THE CONTRACTOR FOR UTILITY WORK SHOWN ON THIS SHEET.



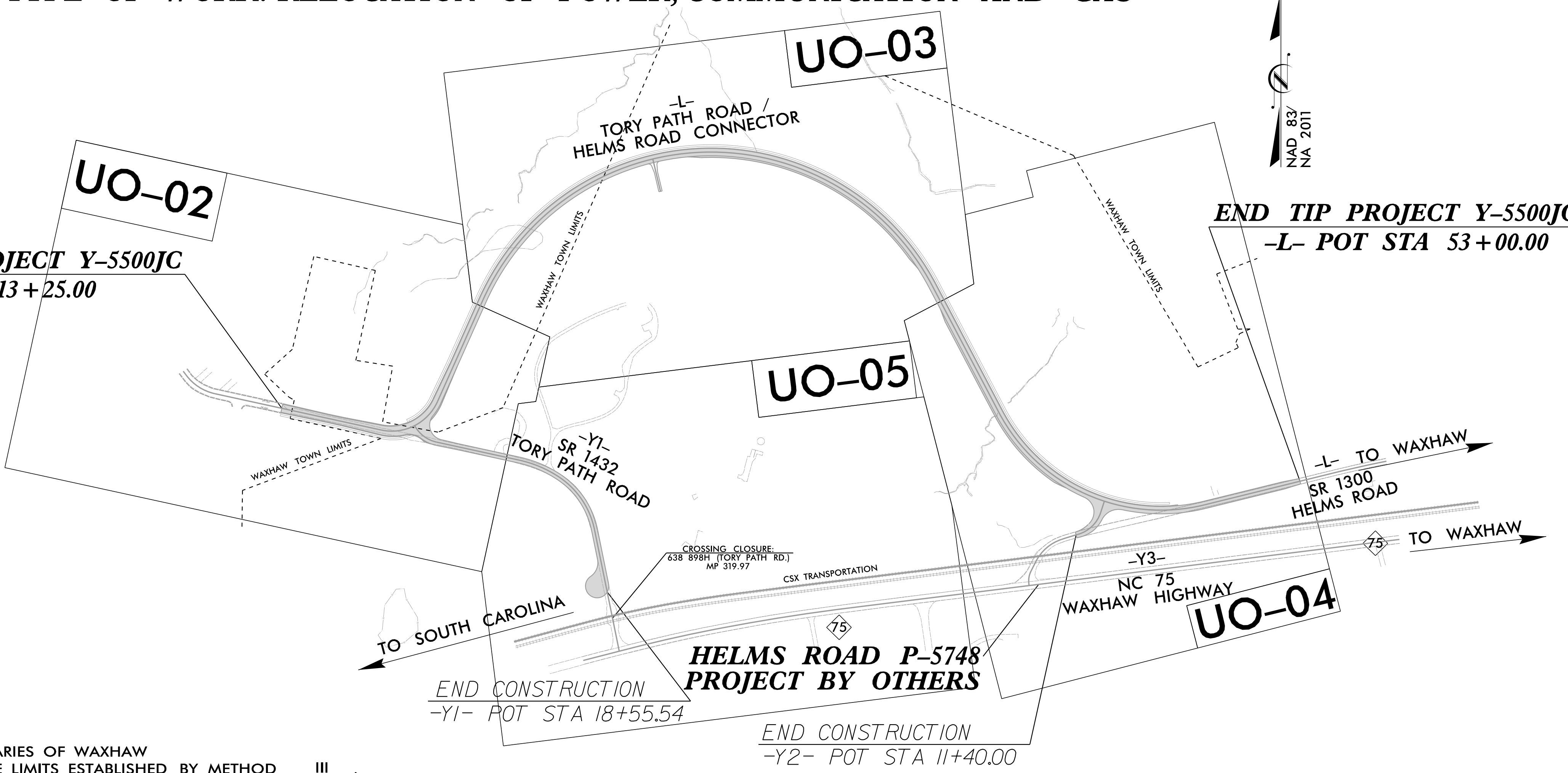
UTILITIES BY OTHERS PLANS UNION COUNTY

**LOCATION: SR 1432 (TORY PATH ROAD)
(CROSSING NUMBER 638 898H, MP 319.97)
CROSSING CLOSURE AT CSX TRANSPORTATION, AND
EXTENSION TO SR 1300 (HELMS ROAD) IN WAXHAW**

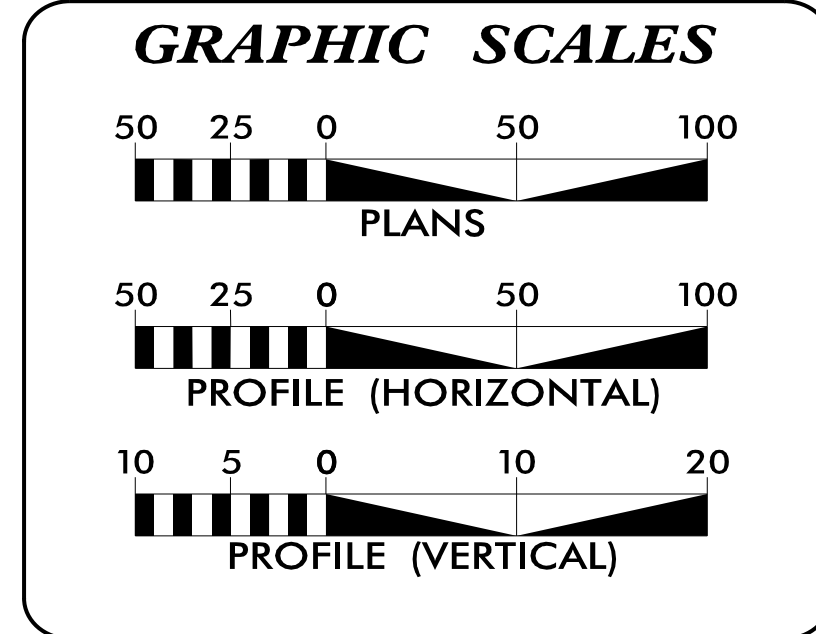
TYPE OF WORK: RELOCATION OF POWER, COMMUNICATION AND GAS

**BEGIN TIP PROJECT Y-5500JC
-L- POT STA 13+25.00**

**END TIP PROJECT Y-5500JC
-L- POT STA 53+00.00**



THERE IS NO CONTROL OF ACCESS ON THIS PROJECT. THIS PROJECT IS PARTIALLY WITHIN THE MUNICIPAL BOUNDARIES OF WAXHAW. CLEARING ON THIS PROJECT SHALL BE PERFORMED TO THE LIMITS ESTABLISHED BY METHOD III.



SHEET NO.:	DESCRIPTION:
UO-01	TITLE SHEET
UO-02 THRU UO-05	UBO PLAN SHEETS

UTILITY OWNERS WITH CONFLICTS

(A) POWER DISTRIBUTION - DUKE ENERGY
(B) COMMUNICATION - WINDSTREAM
(C) COMMUNICATION - CHARTER COMMUNICATIONS
(D) GAS - PIEDMONT NATURAL GAS (PNG)

PREPARED IN THE OFFICE OF:

M M
MOTT
MACDONALD

7621 Purfoy Rd Suite 115
Fuquay-Varina, NC 27526
(919) 552-2253
(919) 552-2254 (Fax)
www.mottmac.com/americas
LICENSE NO. F-0669

DONNA JACKSON PROJECT UTILITY COORDINATOR

**DIVISION OF HIGHWAYS
UTILITIES UNIT**
1555 MAIL SERVICES CENTER
RALEIGH, NC 27699-1555
PHONE (919) 707-6690
FAX (919) 250-4151

ADAM PRESLAR UTILITY DIVISION AGENT

3:11:59 PM
R:\Utilities\Engineering\UBO\F-14288_ut-fsh_UB001.dgn
JDR66165

UTILITIES BY OTHERS

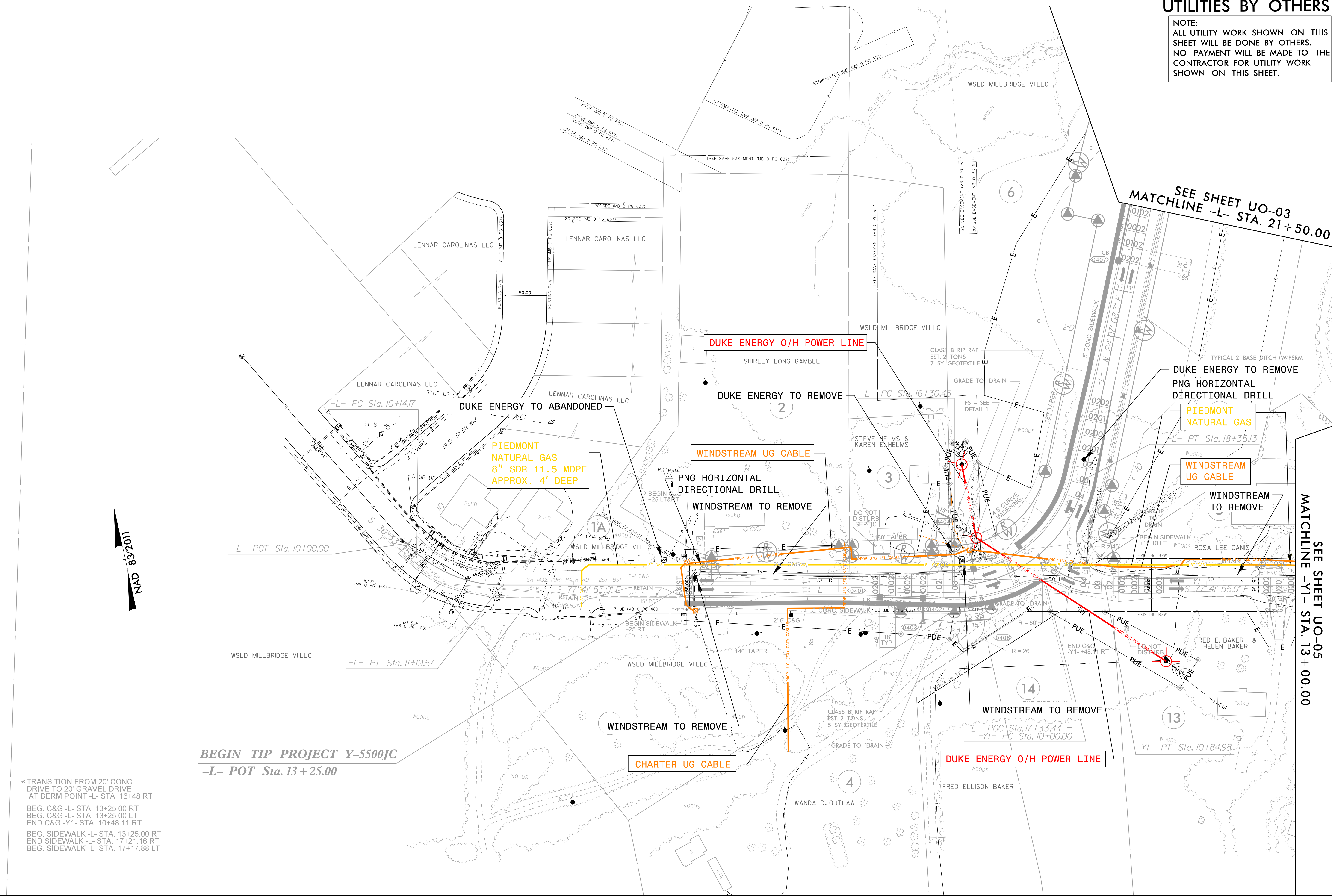
NOTE:
 ALL UTILITY WORK SHOWN ON THIS SHEET WILL BE DONE BY OTHERS.
 NO PAYMENT WILL BE MADE TO THE CONTRACTOR FOR UTILITY WORK SHOWN ON THIS SHEET.

SEE SHEET UO-03
 MATCHLINE -L- STA. 21+50.00

SEE SHEET UO-05
 MATCHLINE -Y1- STA. 13+00.00

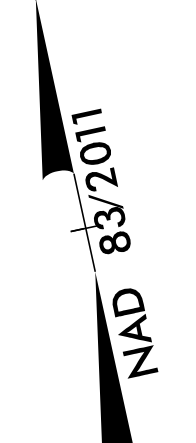
8/17/99

2:58:05 PM
 T:\Projects\14288\14288.dwg
 C:\Users\mg\OneDrive\Engineering\mg\14288-urL-rdy04_U002.dgn



BEGIN TIP PROJECT Y-5500JC
 -L- POT Sta. 13+25.00

* TRANSITION FROM 20' CONC. DRIVE TO 20' GRAVEL DRIVE AT BERM POINT -L- STA. 16+48 RT
 BEG. C&G -L- STA. 13+25.00 RT
 BEG. C&G -L- STA. 13+25.00 LT
 END C&G -Y1- STA. 10+48.11 RT
 BEG. SIDEWALK -L- STA. 13+25.00 RT
 END SIDEWALK -L- STA. 17+21.16 RT
 BEG. SIDEWALK -L- STA. 17+17.88 LT



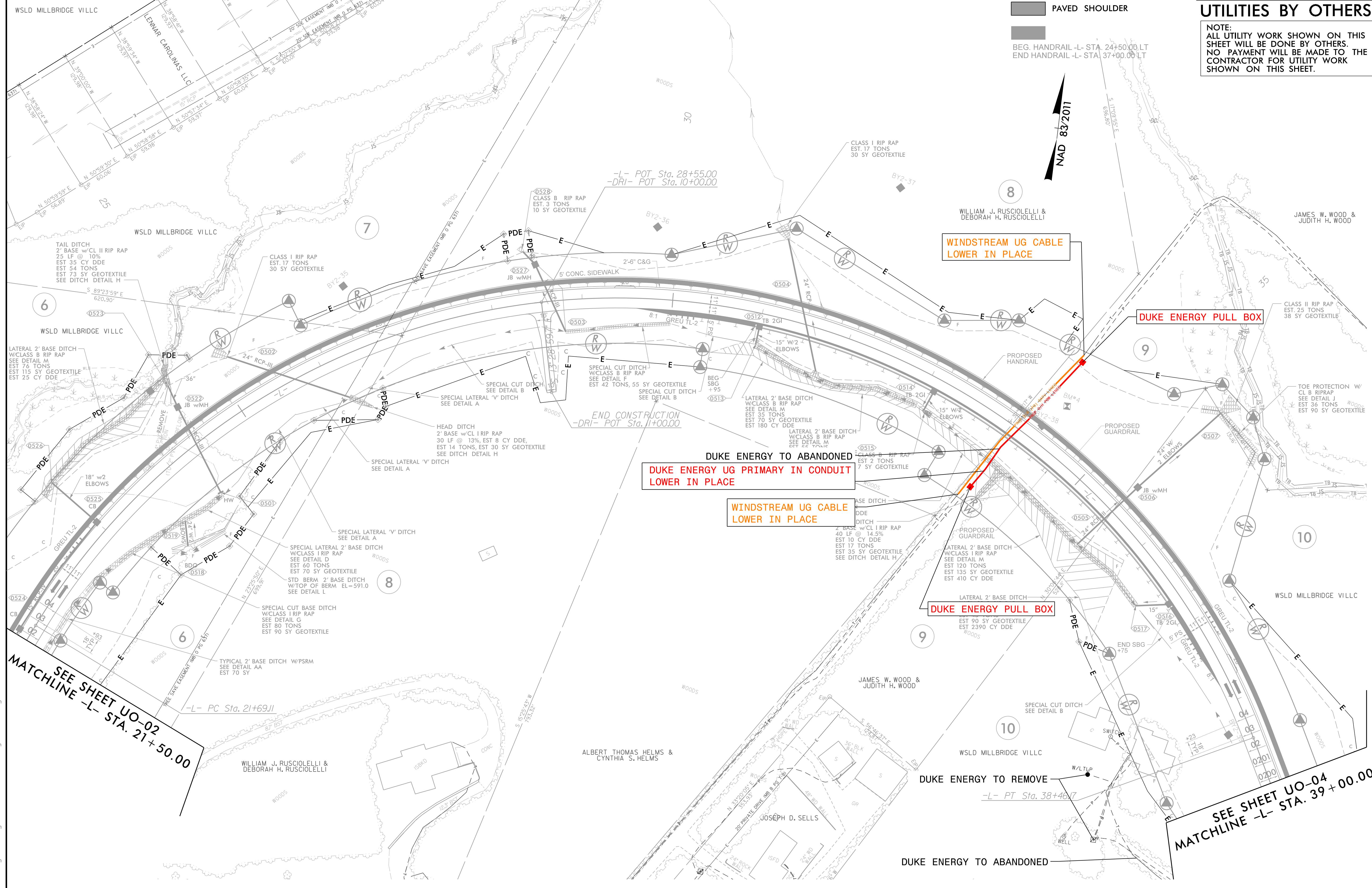
UTILITIES BY OTHERS

NOTE:
ALL UTILITY WORK SHOWN ON THIS SHEET WILL BE DONE BY OTHERS.
NO PAYMENT WILL BE MADE TO THE CONTRACTOR FOR UTILITY WORK SHOWN ON THIS SHEET.

PAVED SHOULDER
BEG. HANDRAIL -L- STA. 24+50.00 LT
END HANDRAIL -L- STA. 37+00.00 LT

NAD 83/2011

8/17/09



SEE SHEET UO-02
MATCHLINE -L- STA. 21+50.00

SEE SHEET UO-04
MATCHLINE -L- STA. 39+00.00

\\fs2801\AM\Projects\Engineering\UBO\F-14288-urL-rdy\05_UO03.dgn

UTILITIES BY OTHERS

NOTE:
ALL UTILITY WORK SHOWN ON THIS SHEET WILL BE DONE BY OTHERS. NO PAYMENT WILL BE MADE TO THE CONTRACTOR FOR UTILITY WORK SHOWN ON THIS SHEET.

EXISTING PAVEMENT REMOVAL
PAVED SHOULDER

BEG. HANDRAIL -L- STA. 41+50.00 LT
END HANDRAIL -L- STA. 44+00.00 LT
END SIDEWALK -L- STA. 49+00.00 LT

END TIP PROJECT Y-5500JC
-L- POT Sta. 53+00.00

WINDSTREAM UG CABLE

WINDSTREAM TO REMOVE

WINDSTREAM TO REMOVE

DUKE ENERGY O/H POWER LINE

DUKE ENERGY TO REMOVE

WINDSTREAM TO ABANDONED

WINDSTREAM TO REMOVE

DUKE ENERGY TO ABANDONED

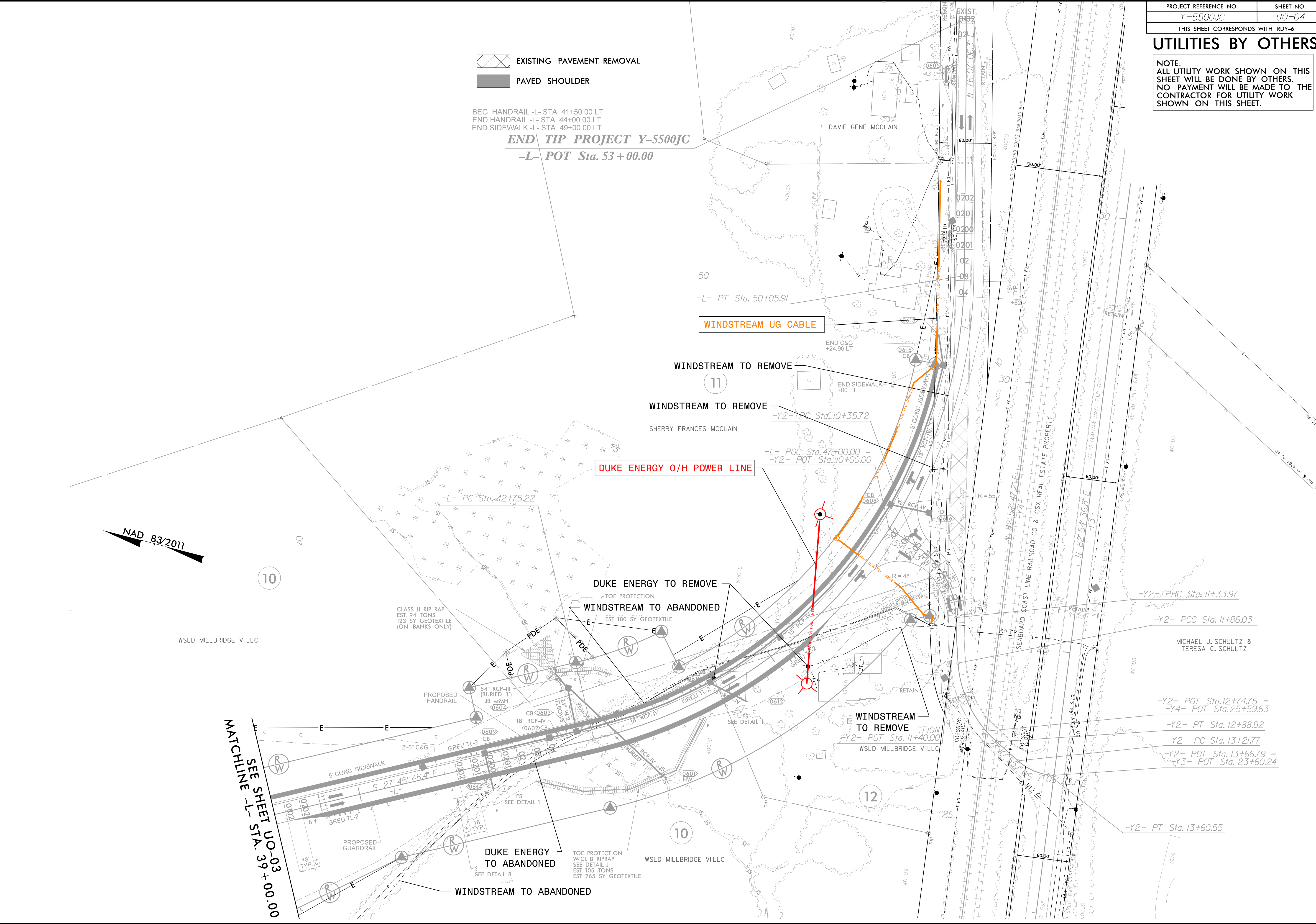
WINDSTREAM TO ABANDONED

NAD 83/2011

MATCHLINE -L- STA. 39+00.00
SEE SHEET U0-03

8/17/09

\\2457_AM\Projects\Engineering\UB0\F-14288-urL-rdy\06_U004.dgn



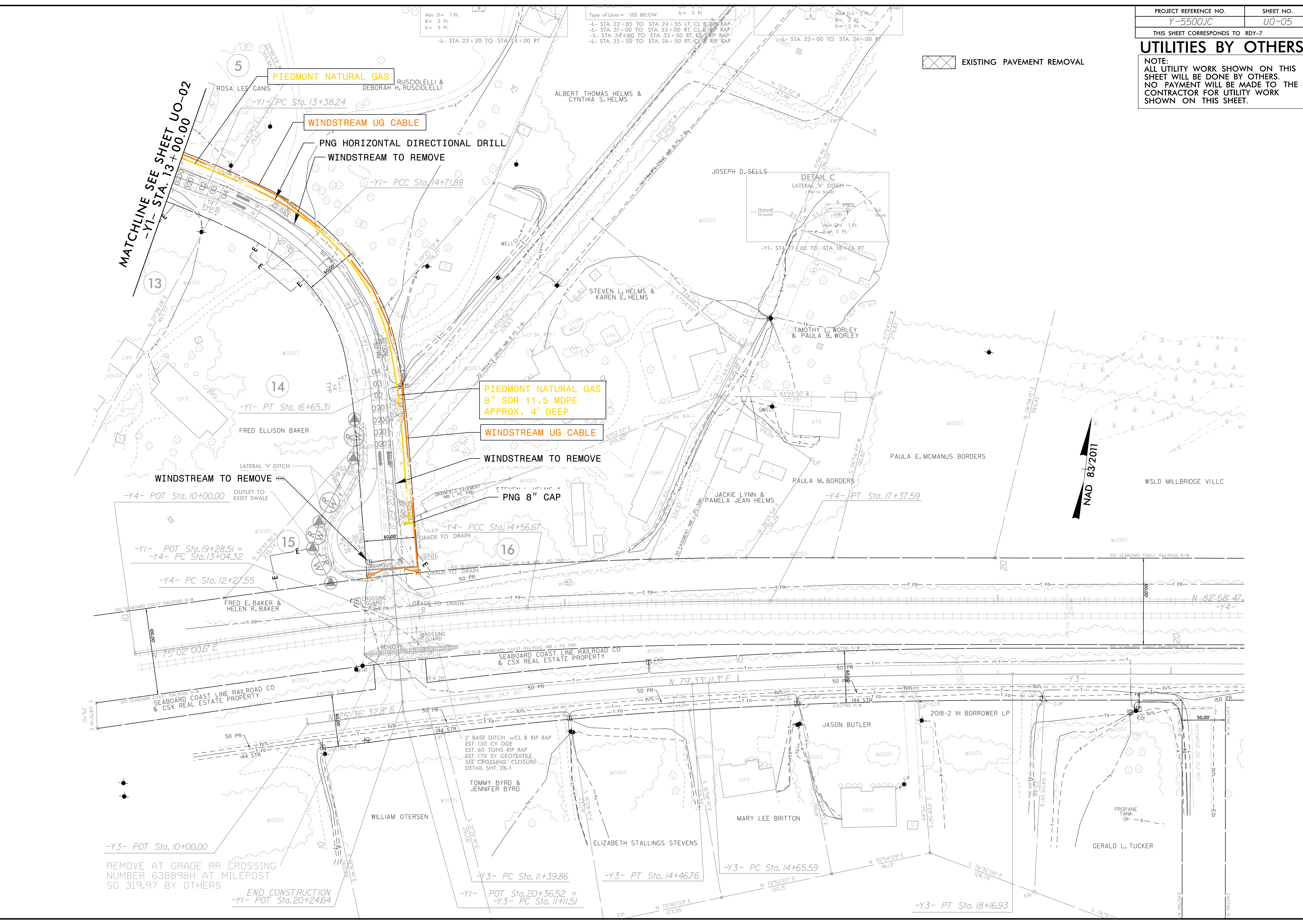
UTILITIES BY OTHERS

NOTE:
ALL UTILITY WORK SHOWN ON THIS SHEET WILL BE DONE BY OTHERS. NO PAYMENT WILL BE MADE TO THE CONTRACTOR FOR UTILITY WORK SHOWN ON THIS SHEET.

 EXISTING PAVEMENT REMOVAL

8/17/09

2:58:34 PM
C:\Users\mg\Engineering\UBO\F-14288-urL-rdy\07_U005.dgn



MATCHLINE SEE SHEET U0-02
-Y1- STA. 13+00.00

PIEDMONT NATURAL GAS
8" SDR 11.5 MDPE
APPROX. 4' DEEP

WINDSTREAM UG CABLE

WINDSTREAM TO REMOVE

PNG 8" CAP

REMOVE AT GRADE RR CROSSING
NUMBER 638898H AT MILEPOST
SG 319.97 BY OTHERS

END CONSTRUCTION
-Y1- POT Sta. 20+24.64

-Y3- PC Sta. 14+65.59
-Y1- POT Sta. 20+36.52 =
-Y3- PC Sta. 11+11.51

-Y3- PT Sta. 18+16.93