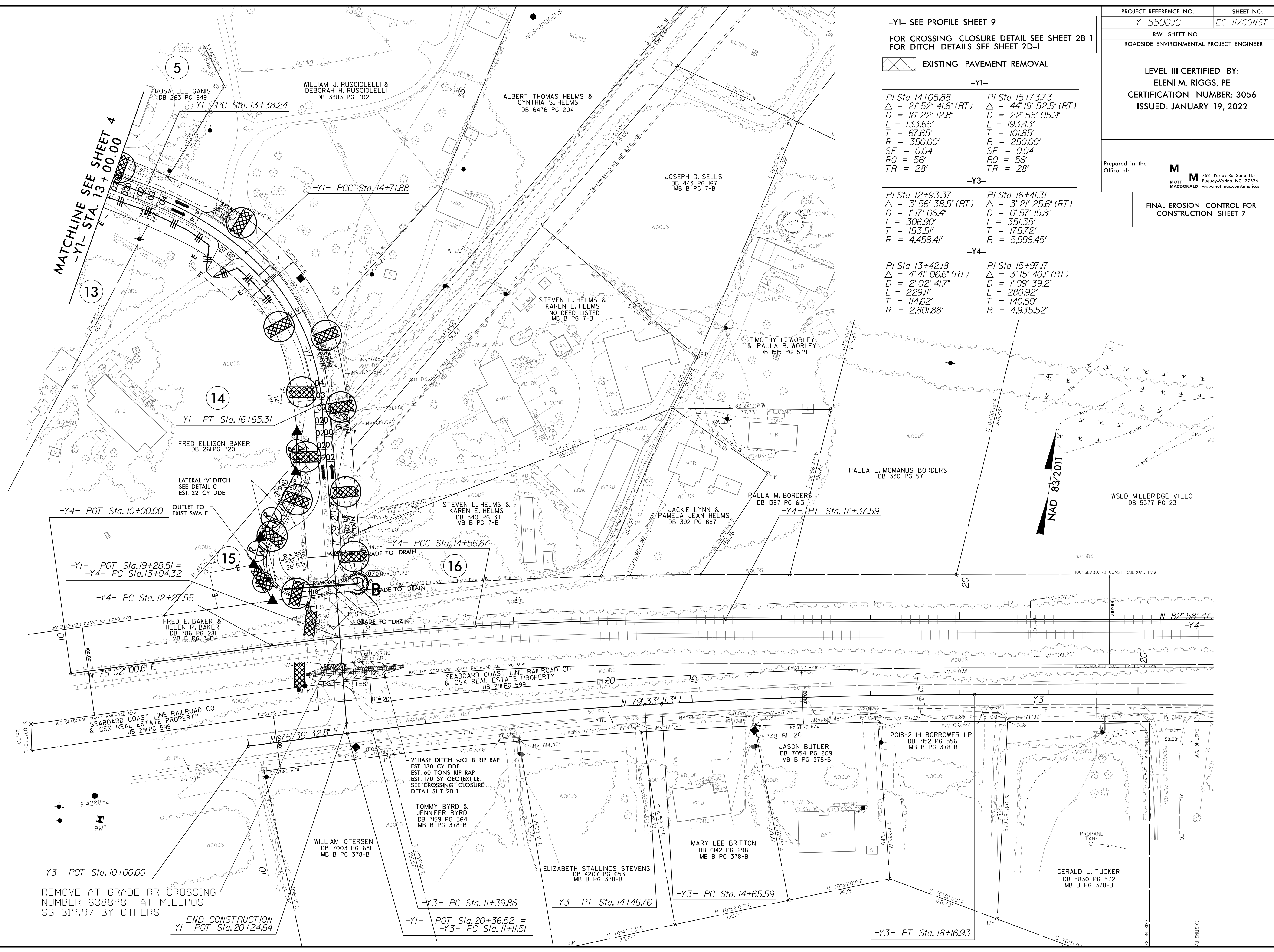


-Y1- SEE PROFILE SHEET 9
FOR CROSSING CLOSURE DETAIL SEE SHEET 2B-1
FOR DITCH DETAILS SEE SHEET 2D-1

EXISTING PAVEMENT REMOVAL

-Y1-	
<i>PI Sta 14+05.88</i>	<i>PI Sta 15+73.73</i>
$\Delta = 2' 52" 41.6" (RT)$	$\Delta = 4' 19" 52.5" (RT)$
$D = 16' 22" 12.8"$	$D = 22' 55" 05.9"$
$L = 133.65'$	$L = 193.43'$
$T = 67.65'$	$T = 101.85'$
$R = 350.00'$	$R = 250.00'$
$SE = 0.04$	$SE = 0.04$
$RO = 56'$	$RO = 56'$
$TR = 28'$	$TR = 28'$
-Y3-	
<i>PI Sta 12+93.37</i>	<i>PI Sta 16+41.31</i>
$\Delta = 3' 56" 38.5" (RT)$	$\Delta = 3' 21" 25.6" (RT)$
$D = 1' 17" 06.4"$	$D = 0' 57" 19.8"$
$L = 306.90'$	$L = 351.35'$
$T = 153.51'$	$T = 175.72'$
$R = 4,458.41'$	$R = 5,996.45'$
-Y4-	
<i>PI Sta 13+42.18</i>	<i>PI Sta 15+97.17</i>
$\Delta = 4' 41" 06.6" (RT)$	$\Delta = 3' 15" 40.1" (RT)$
$D = 2' 02" 41.7"$	$D = 1' 09" 39.2"$
$L = 229.11'$	$L = 280.92'$
$T = 114.62'$	$T = 140.50'$
$R = 2,801.88'$	$R = 4,935.52'$



REMOVE AT GRADE RR CROSSING NUMBER 638898H AT MILEPOST SG 319.97 BY OTHERS

END CONSTRUCTION
-Y1- POT Sta. 20+24.64

-Y3- PC Sta. 11+39.86

-Y1- POT Sta. 20+36.52 =
-Y3- PC Sta. 11+11.51

-Y3- PT Sta. 18+16.93