

8/17/19

NOTE: PLACE TEMPORARY ROCK SEDIMENT DAMS TYPE - B AND TEMPORARY ROCK SILT CHECKS TYPE - A AT DRAINAGE OUTLETS.

NOTE: ALL EROSION CONTROL DEVICES SHOWN ARE LOCATED WITHIN EXISTING RW OR EASEMENT.

NOTE: PERIMETER EC MEASURES SHALL BE INSTALLED DURING C & G PHASE.

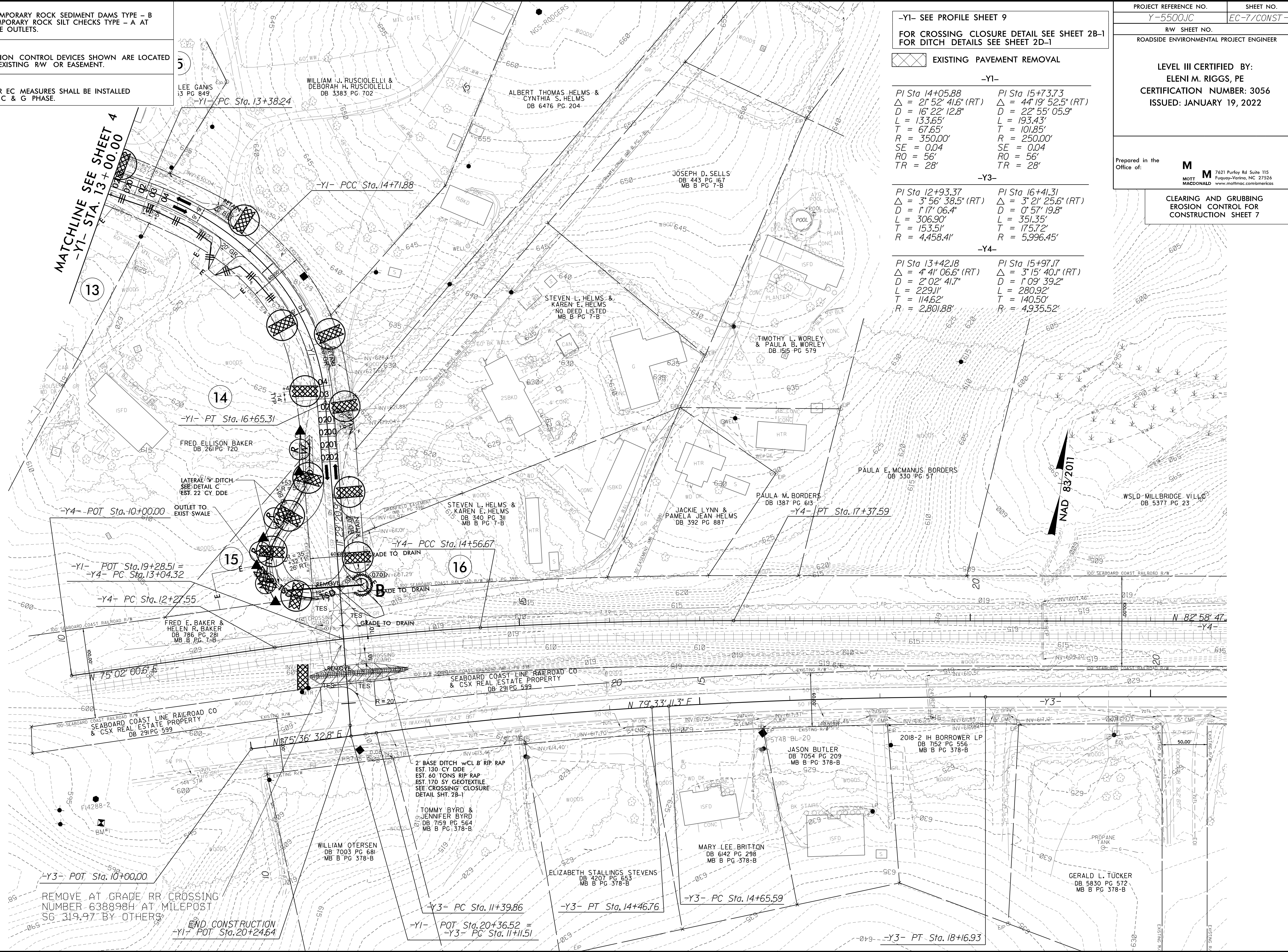
PROJECT REFERENCE NO. Y-5500JC SHEET NO. EC-7/CONST-7

RW SHEET NO. ROADSIDE ENVIRONMENTAL PROJECT ENGINEER

LEVEL III CERTIFIED BY:
ELENI M. RIGGS, PE
CERTIFICATION NUMBER: 3056
ISSUED: JANUARY 19, 2022

Prepared in the Office of: **M** MOTT MACDONALD
7621 Purfoy Rd Suite 115
Fayetteville, NC 27526
www.mottmac.com/mreos

CLEARING AND GRUBBING EROSION CONTROL FOR CONSTRUCTION SHEET 7



-Y1- SEE PROFILE SHEET 9

FOR CROSSING CLOSURE DETAIL SEE SHEET 2B-1 FOR DITCH DETAILS SEE SHEET 2D-1

EXISTING PAVEMENT REMOVAL

-Y1-

PI Sta 14+05.88	PI Sta 15+73.73
$\Delta = 21^{\circ} 52' 41.6''$ (RT)	$\Delta = 44^{\circ} 19' 52.5''$ (RT)
D = 16' 22" 12.8"	D = 22' 55" 05.9"
L = 133.65'	L = 193.43'
T = 67.65'	T = 101.85'
R = 350.00'	R = 250.00'
SE = 0.04	SE = 0.04
RO = 56'	RO = 56'
TR = 28'	TR = 28'

-Y3-

PI Sta 12+93.37	PI Sta 16+41.31
$\Delta = 3^{\circ} 56' 38.5''$ (RT)	$\Delta = 3^{\circ} 21' 25.6''$ (RT)
D = 1' 17" 06.4"	D = 0' 57" 19.8"
L = 306.90'	L = 351.35'
T = 153.51'	T = 175.72'
R = 4,458.41'	R = 5,996.45'

-Y4-

PI Sta 13+42.18	PI Sta 15+97.17
$\Delta = 4^{\circ} 41' 06.6''$ (RT)	$\Delta = 3^{\circ} 15' 40.1''$ (RT)
D = 2' 02" 41.7"	D = 1' 09" 39.2"
L = 229.11'	L = 280.92'
T = 114.62'	T = 140.50'
R = 2,801.88'	R = 4,935.52'

NAD 83/2011

4/9/2022 n:\c\cra\1\F-14288.ec.psh\07.dgn