

I, AUGUST THICK, a Professional Land Surveyor in the state of North Carolina hereby certify to the best of my knowledge and belief that the following work items (Base map Compilation, R/W Staking) performed under my responsible charge meet NCDOT Survey Standards as directed in the NCDOT Location & Surveys guidelines and procedures.

I further certify that the data compiled came from available surveys/mapping performed by others and provided to me by NCDOT and do not certify to the accuracy or quality of the individual data sources.

I further certify that the right of way and permanent easement points shown herein and outlined in the tables shown herein (localized coordinates, station/offset) have been checked and are accurate representations of the right of way and permanent easement points depicted on the corresponding highway plans. I also certify that the right of way and permanent easement points shown herein have been field monumented under my supervision from existing survey control provided by others; that the depicted property data shown herein were surveyed by others; and these monuments denote the right of way and easement boundaries at the time of staking which may be subject to change due to right of way revisions (See deeds for final determination).

Witness my original signature, registration number and seal this 26th day of July, 2021.

August Thick
Professional Land Surveyor



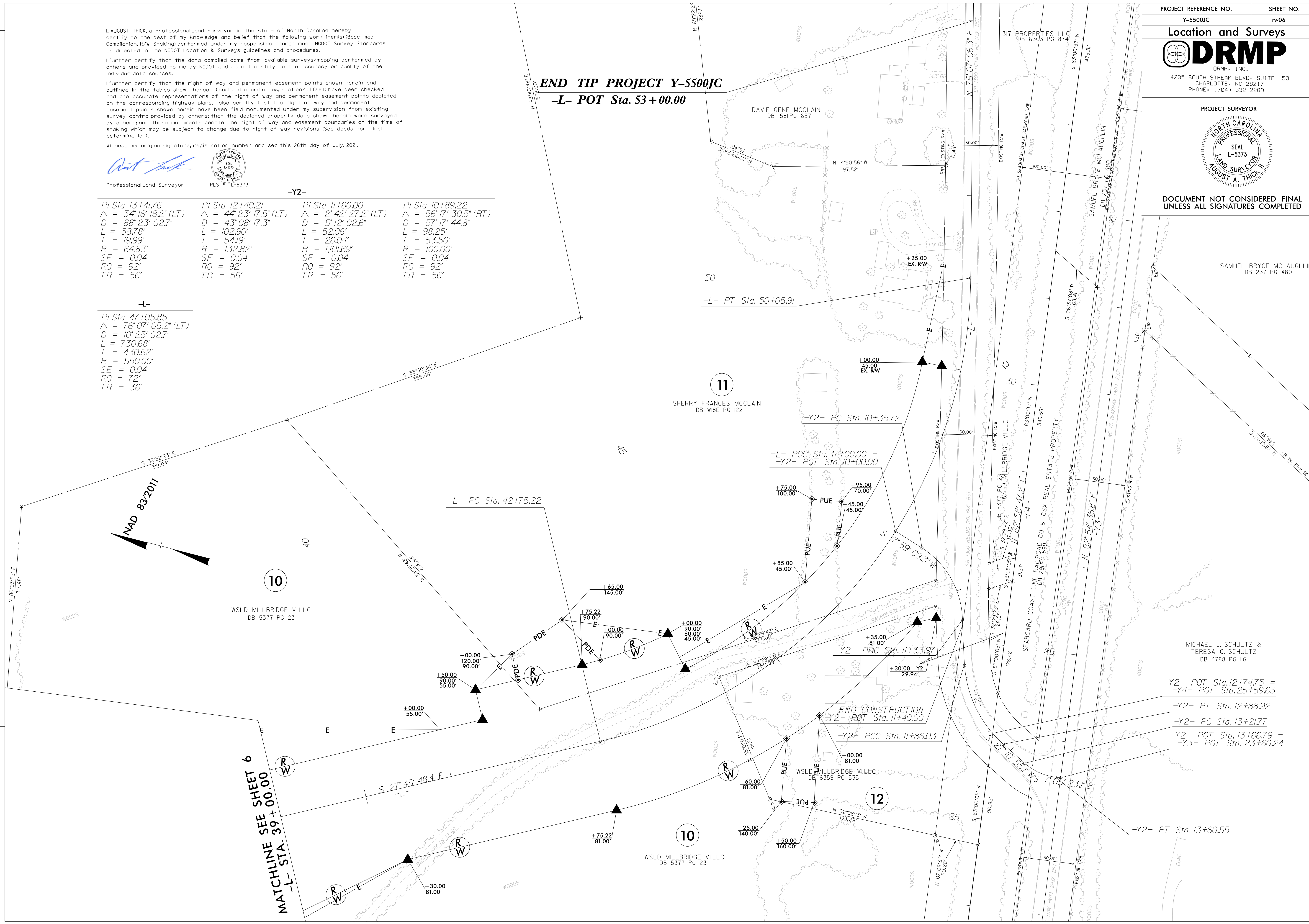
END TIP PROJECT Y-5500JC
-L- POT Sta. 53+00.00

PI Sta 13+41.76	PI Sta 12+40.21	PI Sta 11+60.00	PI Sta 10+89.22
$\Delta = 34' 16' 18.2" (LT)$	$\Delta = 44' 23' 17.5" (LT)$	$\Delta = 2' 42' 27.2" (LT)$	$\Delta = 56' 17' 30.5" (RT)$
$D = 88' 23' 02.7"$	$D = 43' 08' 17.3"$	$D = 5' 12' 02.6"$	$D = 57' 17' 44.8"$
$L = 38.78'$	$L = 102.90'$	$L = 52.06'$	$L = 98.25'$
$T = 19.99'$	$T = 54.19'$	$T = 26.04'$	$T = 53.50'$
$R = 64.83'$	$R = 132.82'$	$R = 1,101.69'$	$R = 100.00'$
$SE = 0.04$	$SE = 0.04$	$SE = 0.04$	$SE = 0.04$
$RO = 92'$	$RO = 92'$	$RO = 92'$	$RO = 92'$
$TR = 56'$	$TR = 56'$	$TR = 56'$	$TR = 56'$

-L-

PI Sta 47+05.85
$\Delta = 76' 07' 05.2" (LT)$
$D = 10' 25' 02.7"$
$L = 730.68'$
$T = 430.62'$
$R = 550.00'$
$SE = 0.04$
$RO = 72'$
$TR = 36'$

REVISIONS



PROJECT REFERENCE NO. Y-5500JC SHEET NO. rw06

Location and Surveys

DRMP
DRMP, INC.
4235 SOUTH STREAM BLVD., SUITE 150
CHARLOTTE, NC 28217
PHONE: (704) 332 2289

PROJECT SURVEYOR

AUGUST A. THICK

DOCUMENT NOT CONSIDERED FINAL UNLESS ALL SIGNATURES COMPLETED

MICHAEL J. SCHULTZ & TERESA C. SCHULTZ
DB 4788 PG 116

- Y2- POT Sta. 12+74.75 = -Y4- POT Sta. 25+59.63
- Y2- PT Sta. 12+88.92
- Y2- PC Sta. 13+21.77
- Y2- POT Sta. 13+66.79 = -Y3- POT Sta. 23+60.24

-Y2- PT Sta. 13+60.55