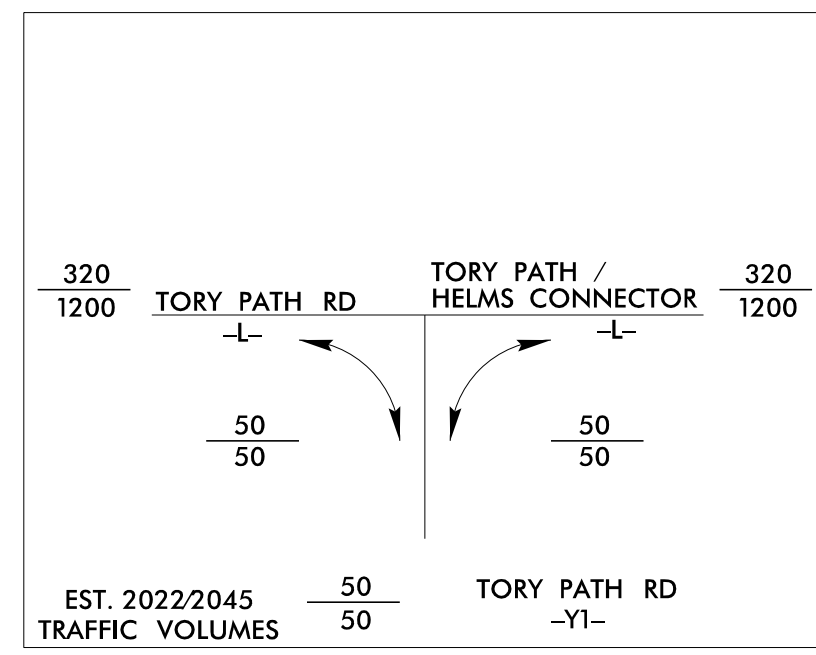


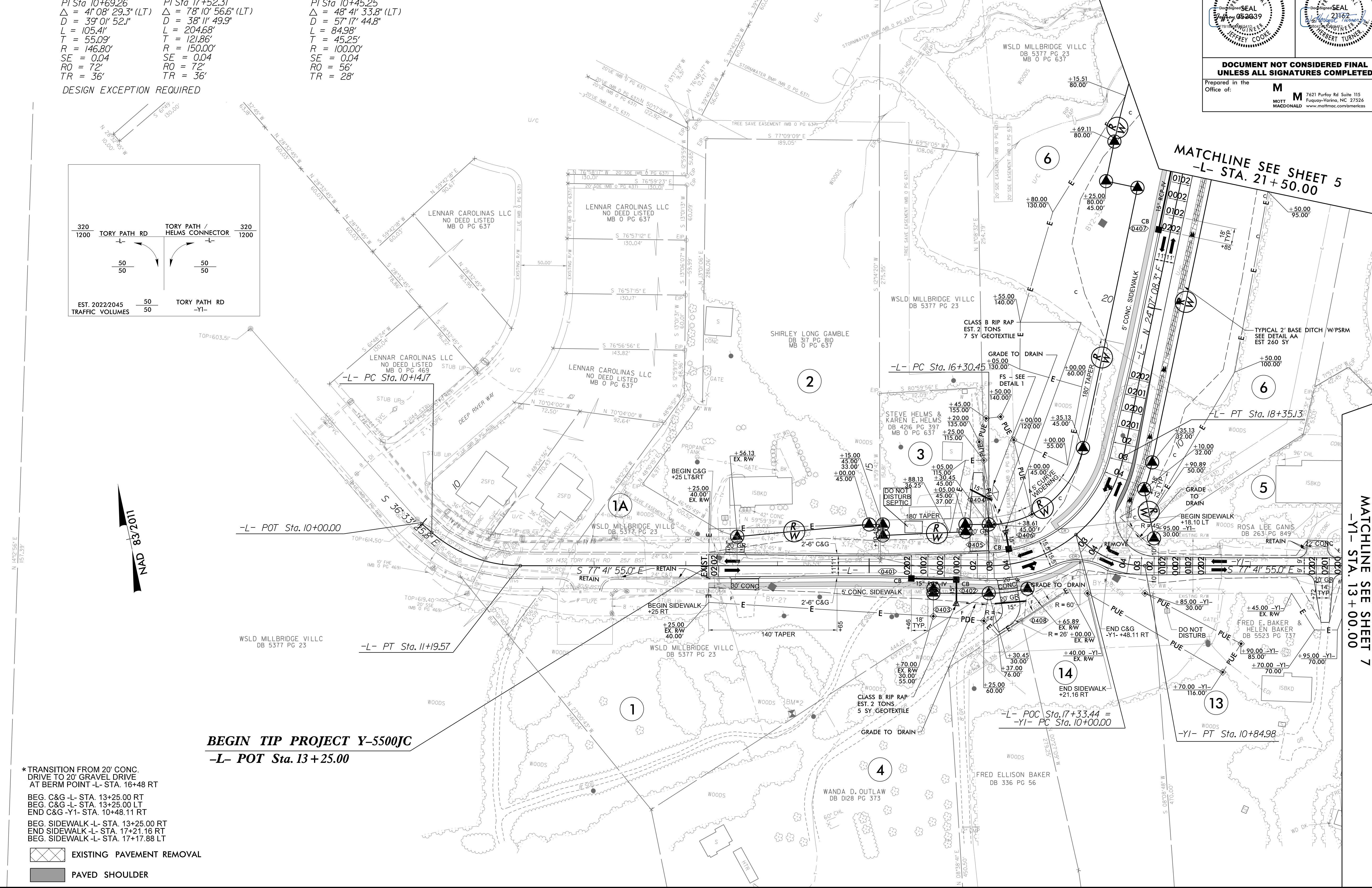
-L- SEE PROFILE SHEET 8  
-Y1- SEE PROFILE SHEET 9  
FOR DITCH DETAILS SEE SHEET 2D-1  
FOR CURB RAMP DETAILS SEE SHEET 2C-3

<b>-L-</b>		<b>-Y1-</b>	
PI Sta 10+69.26	PI Sta 17+52.31	PI Sta 10+45.25	
$\Delta = 4^{\circ}08'29.3"$ (LT)	$\Delta = 78^{\circ}10'56.6"$ (LT)	$\Delta = 48^{\circ}41'33.8"$ (LT)	
D = 39'01" 52.1"	D = 38'11" 49.9"	D = 57'17" 44.8"	
L = 105.41'	L = 204.68'	L = 84.98'	
T = 55.09'	T = 121.86'	T = 45.25'	
R = 146.80'	R = 150.00'	R = 100.00'	
SE = 0.04	SE = 0.04	SE = 0.04	
RO = 72'	RO = 72'	RO = 56'	
TR = 36'	TR = 36'	TR = 28'	

DESIGN EXCEPTION REQUIRED



8/17/99  
3:58:04 PM  
C:\Users\jcoole\OneDrive\Desktop\14288\_rdu\_psh04.dgn



**BEGIN TIP PROJECT Y-5500JC**  
-L- POT Sta. 13+25.00

\* TRANSITION FROM 20' CONC. DRIVE TO 20' GRAVEL DRIVE AT BERM POINT -L- STA. 16+48 RT  
BEG. C&G -L- STA. 13+25.00 RT  
BEG. C&G -L- STA. 13+25.00 LT  
END C&G -Y1- STA. 10+48.11 RT  
BEG. SIDEWALK -L- STA. 13+25.00 RT  
END SIDEWALK -L- STA. 17+21.16 RT  
BEG. SIDEWALK -L- STA. 17+17.88 LT

EXISTING PAVEMENT REMOVAL  
 PAVED SHOULDER

MATCHLINE SEE SHEET 5  
-L- STA. 21+50.00

MATCHLINE SEE SHEET 7  
-Y1- STA. 13+00.00