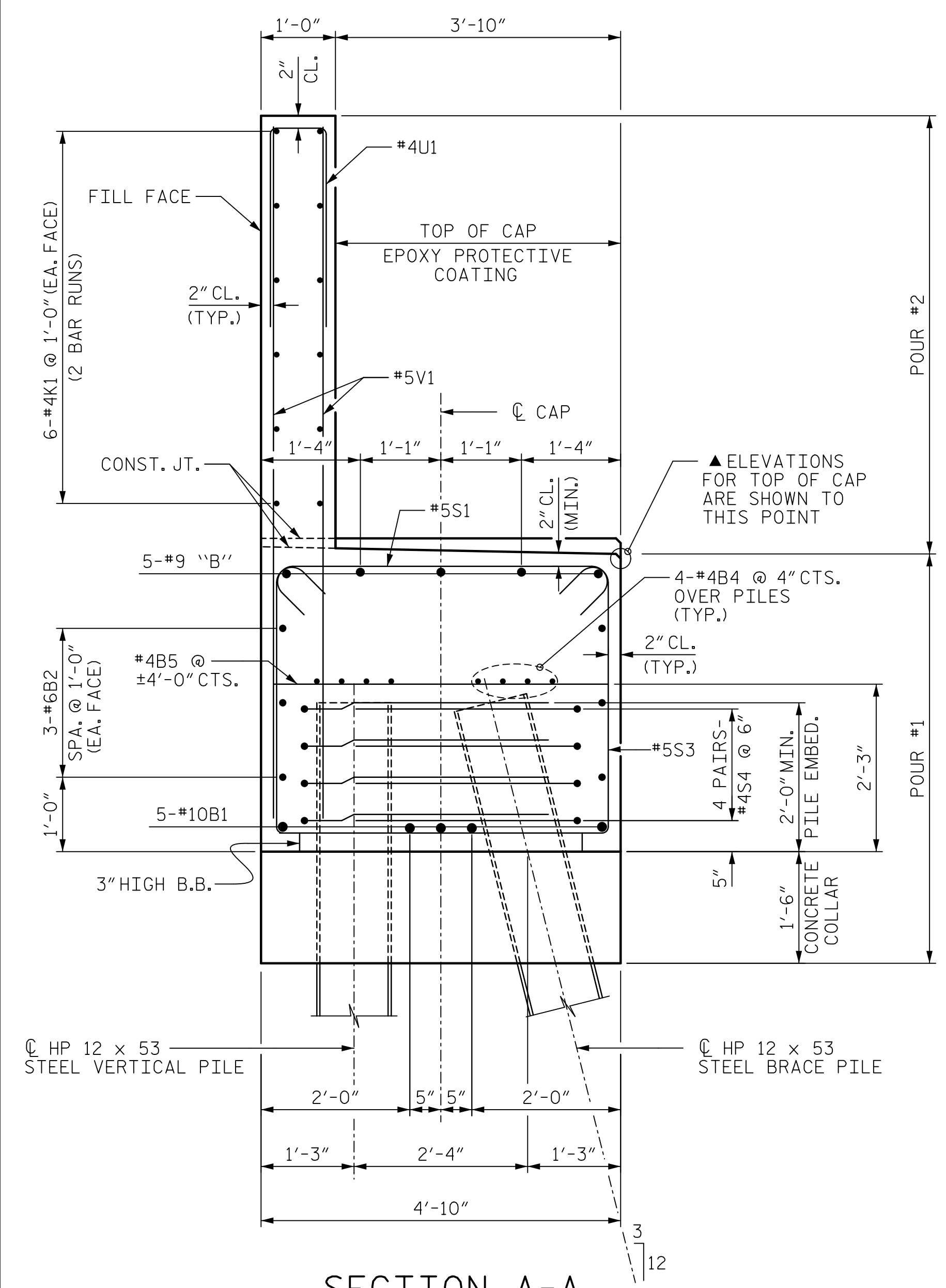
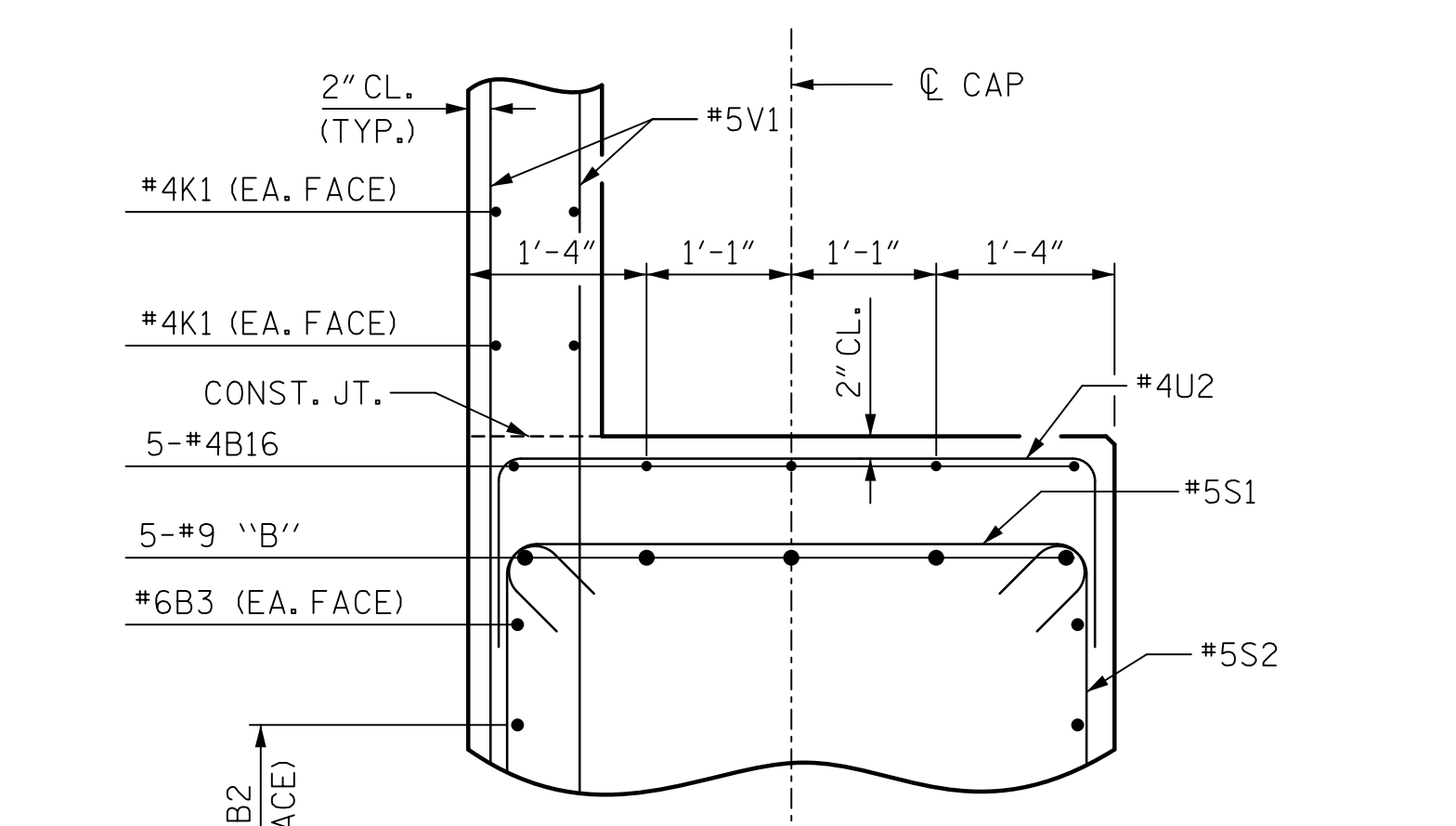


DATE: 3/29/2019
TIME: 2:27:58 PM

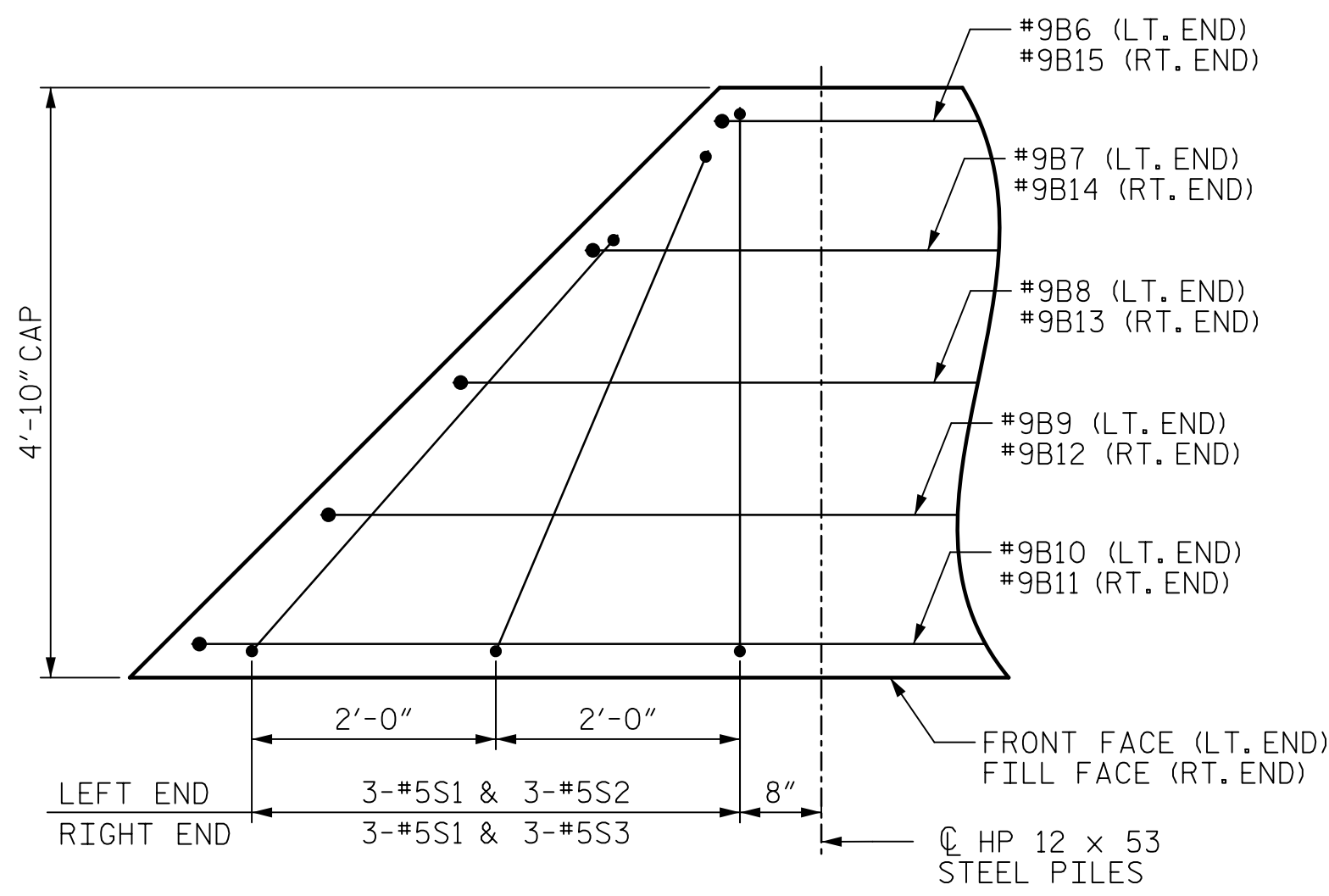
USER: BinJambalaga
DGN: R:\Structures\04 Drawings\01_001_LBRO044_SMU_LE03.dgn



SECTION A-A



SECTION B-B



SPLAYED BAR DETAIL

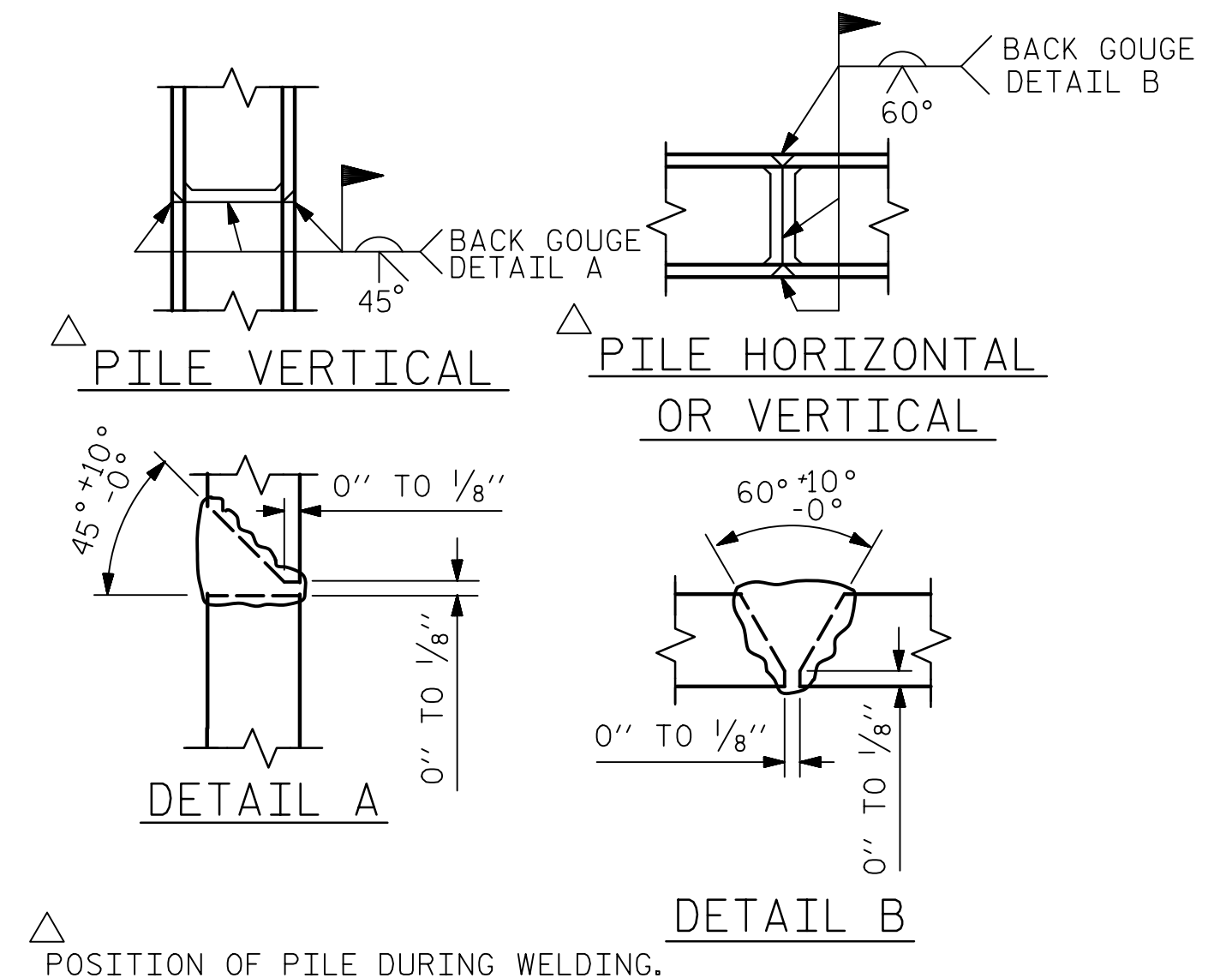
PLAN VIEW SHOWN AT LEFT END, SIMILAR BY ROTATION AT RIGHT END.

BAR TYPE

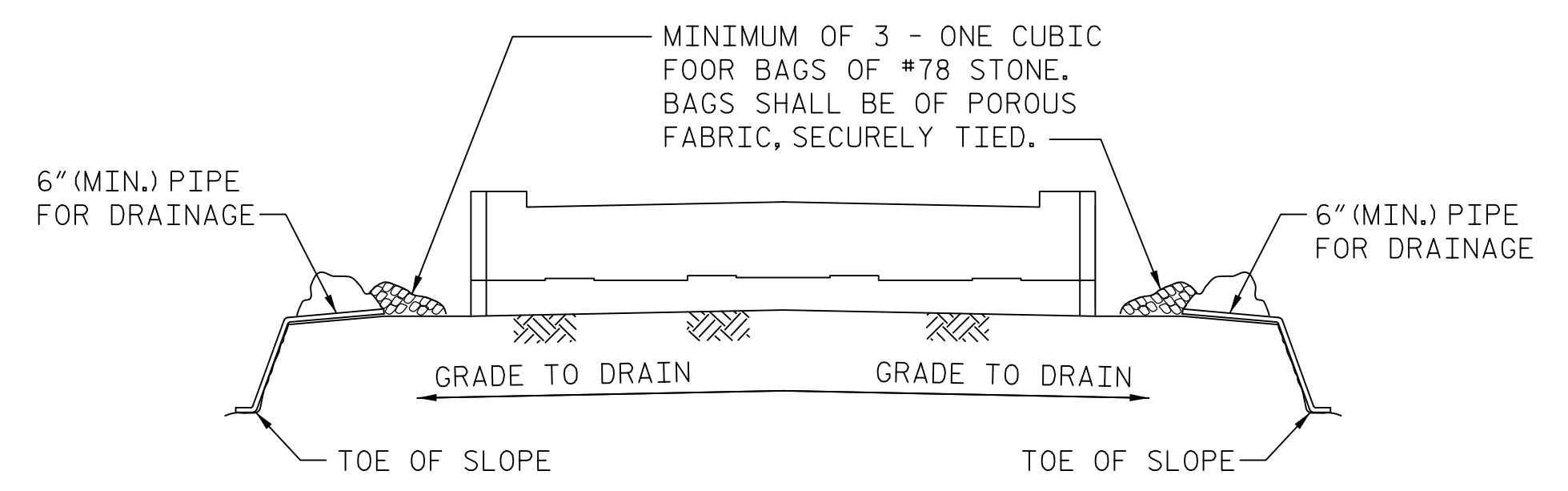
BAR	DIM. "X"
B6	34'-7"
B7	35'-8"
B8	36'-9"
B9	37'-10"
B10	38'-11"
B11	32'-10"
B12	27'-8"
B13	26'-7"
B14	25'-6"
B15	28'-6"

ALL BAR DIMENSIONS ARE OUT TO OUT.

BILL OF MATERIAL					
END BENT 2					
BAR NO.	SIZE	TYPE	LENGTH	WEIGHT	
B1	5	#10	1	60'-10"	1309
B2	6	#6	STR	57'-8"	520
B3	2	#6	STR	33'-7"	101
B4	16	#4	STR	30'-4"	324
B5	12	#4	STR	4'-6"	36
B6	1	#9	9	35'-10"	122
B7	1	#9	9	36'-11"	126
B8	1	#9	9	38'-0"	129
B9	1	#9	9	39'-1"	133
B10	1	#9	9	40'-2"	137
B11	1	#9	9	34'-1"	116
B12	1	#9	9	28'-11"	98
B13	1	#9	9	27'-10"	95
B14	1	#9	9	26'-9"	91
B15	1	#9	9	29'-9"	101
B16	10	#4	STR	14'-4"	96
B17	5	#4	STR	3'-5"	11
H1	25	#6	2	12'-11"	485
H2	25	#6	2	12'-3"	460
H3	12	#4	3	16'-11"	136
H4	12	#4	3	17'-7"	141
K1	24	#4	STR	30'-3"	485
K2	8	#4	STR	3'-8"	20
S1	60	#5	4	5'-5"	339
S2	38	#5	5	13'-10"	548
S3	22	#5	5	12'-9"	293
S4	56	#4	6	7'-6"	281
S5	3	#6	7	10'-1"	45
S6	3	#6	8	5'-4"	24
U1	50	#4	6	6'-8"	223
U2	18	#4	6	9'-0"	108
V1	100	#5	STR	8'-8"	904
V2	10	#5	STR	11'-9"	123
V3	22	#5	STR	6'-4"	145
V4	22	#5	STR	7'-8"	176
V5	10	#5	STR	10'-4"	108
V6	32	#5	STR	5'-8"	189
V7	32	#5	STR	6'-11"	231
REINFORCING STEEL			9009 LBS.		
CLASS A CONCRETE					
POUR #1 (CAP, COLLARS & LOWER WINGWALLS)			56.7 C.Y.		
POUR #2 (BACKWALL & UPPER WINGWALL)			18.7 C.Y.		
TOTAL =			75.4 C.Y.		
HP 12x53 STEEL PILES:					
NO. = 15			LIN. FT. = 615		
PILE DRIVING EQUIPMENT SETUP FOR HP 12x53 STEEL PILES			15 EA.		



PILE SPLICE DETAILS



BAGGED STONE AND PIPE SHALL BE PLACED IMMEDIATELY AFTER COMPLETION OF END BENT EXCAVATION. PIPE MAY BE EITHER CONCRETE, CORRUGATED STEEL, CORRUGATED ALUMINUM ALLOY, OR CORRUGATED PLASTIC. PERFORATED PIPE WILL NOT BE ALLOWED.

BAGGED STONE SHALL REMAIN IN PLACE UNTIL THE ENGINEER DIRECTS THAT IT BE REMOVED. THE CONTRACTOR SHALL REMOVE AND DISPOSE OF SILT ACCUMULATIONS AT BAGGED STONE WHEN SO DIRECTED BY THE ENGINEER. BAGS SHALL BE REMOVED AND REPLACED WHENEVER THE ENGINEER DETERMINES THAT THEY HAVE DETERIORATED AND LOST THEIR EFFECTIVENESS.

NO SEPARATE PAYMENT WILL BE MADE FOR THIS WORK AND THE ENTIRE COST OF THIS WORK SHALL BE INCLUDED IN THE UNIT CONTRACT PRICE FOR THE SEVERAL PAY ITEMS.

TEMPORARY DRAINAGE AT END BENT

DOCUMENT NOT CONSIDERED FINAL UNLESS ALL SIGNATURES COMPLETED

AECOM
AECOM TECHNICAL SERVICES OF NC, INC.
5438 WADE PARK BOULEVARD, SUITE 200
RALEIGH, NC 27607
(919) 854-4200 www.aecom.com
AECOM License No. F-0342

Professional Seal:
Seal No. 041343
Professional Engineer
Gregory R. Cook
5/15/2012

PROJECT NO. BR-0044
ROCKINGHAM COUNTY
STATION: 21+97.00 -L-

SHEET 3 OF 3

STATE OF NORTH CAROLINA
DEPARTMENT OF TRANSPORTATION
RALEIGH
SUBSTRUCTURE
END BENT 2

REVISIONS						SHEET NO.
NO.	BY:	DATE:	NO.	BY:	DATE:	S-36
1			3			TOTAL SHEETS
2			4			39

DRAWN BY : D.R. DRUM	DATE : 11/2019
CHECKED BY : G.R. COLS	DATE : 11/2019
DESIGNED BY : H.T. ROSEMOND	DATE : 11/2019
DESIGN CHECKED BY : S. NATARAJAN	DATE : 11/2019