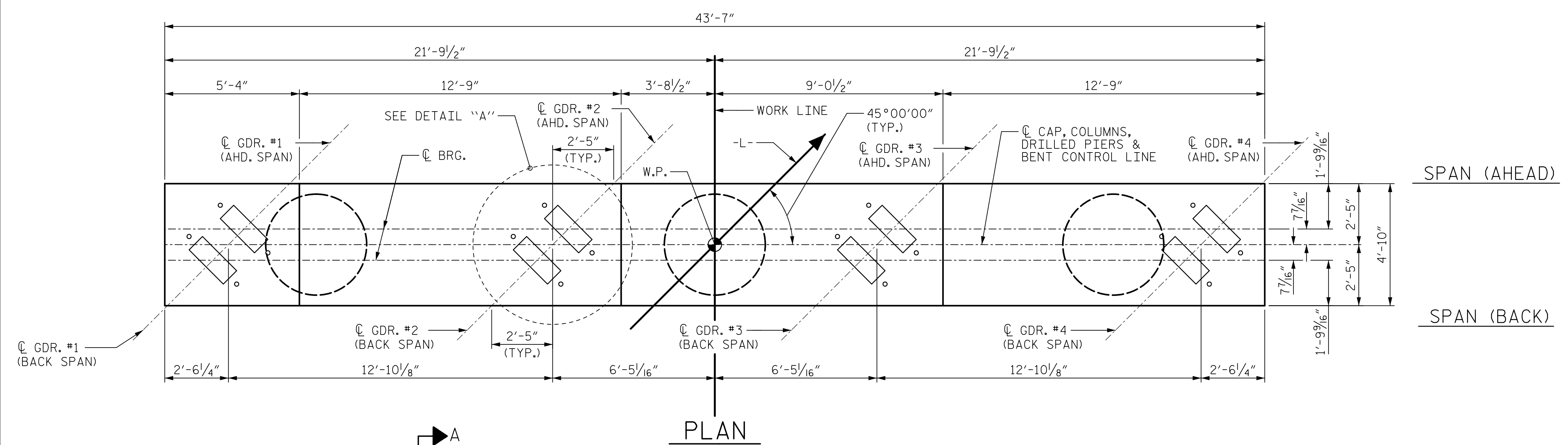
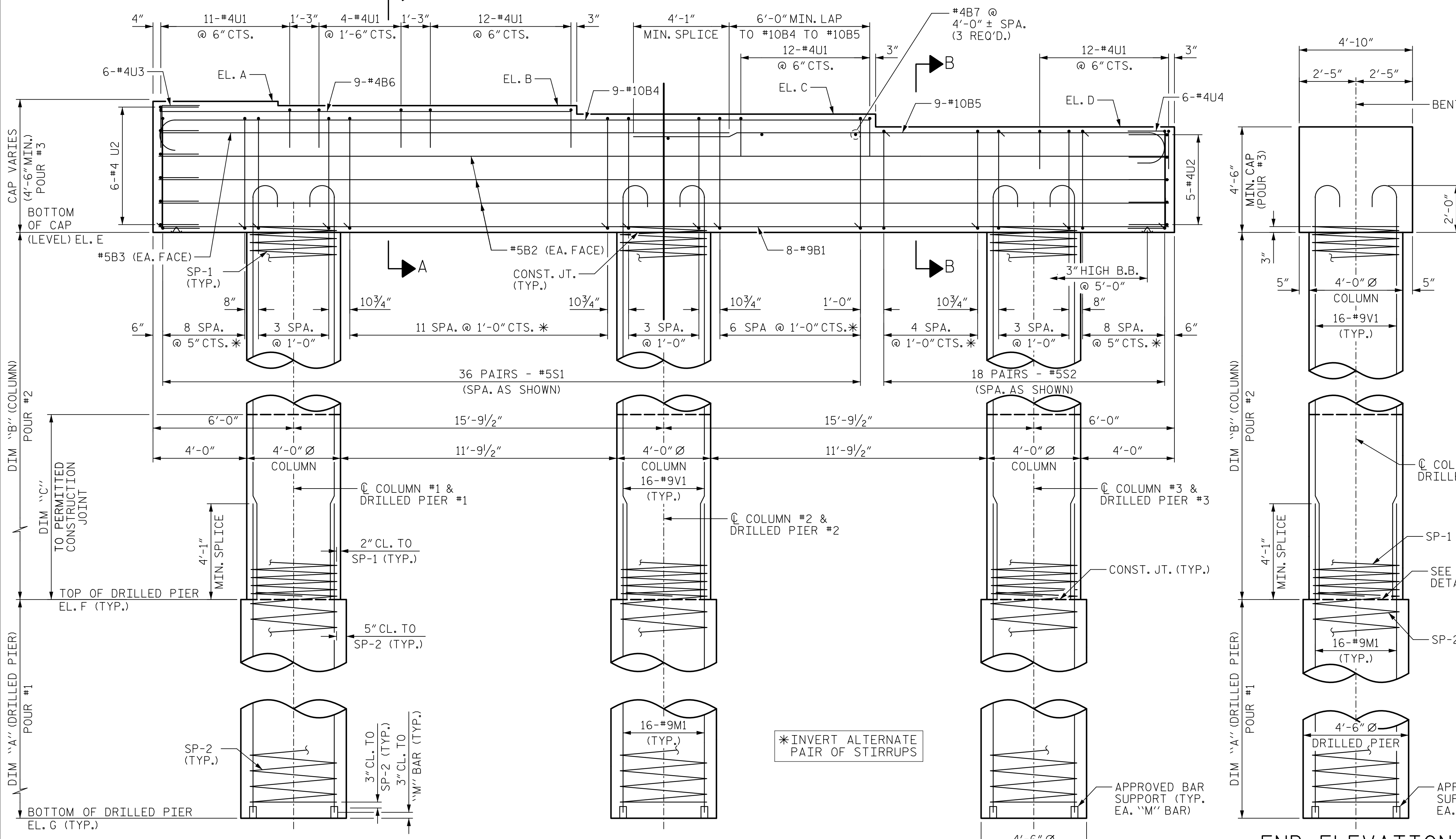


DATE: 4/15/2022  
TIME: 3:55:25 PM

USER: greg@acem.com  
DIR: R:\Structures\04 Drawings\01\_0061\_BR0044\_SML\B101.dgn



PLAN

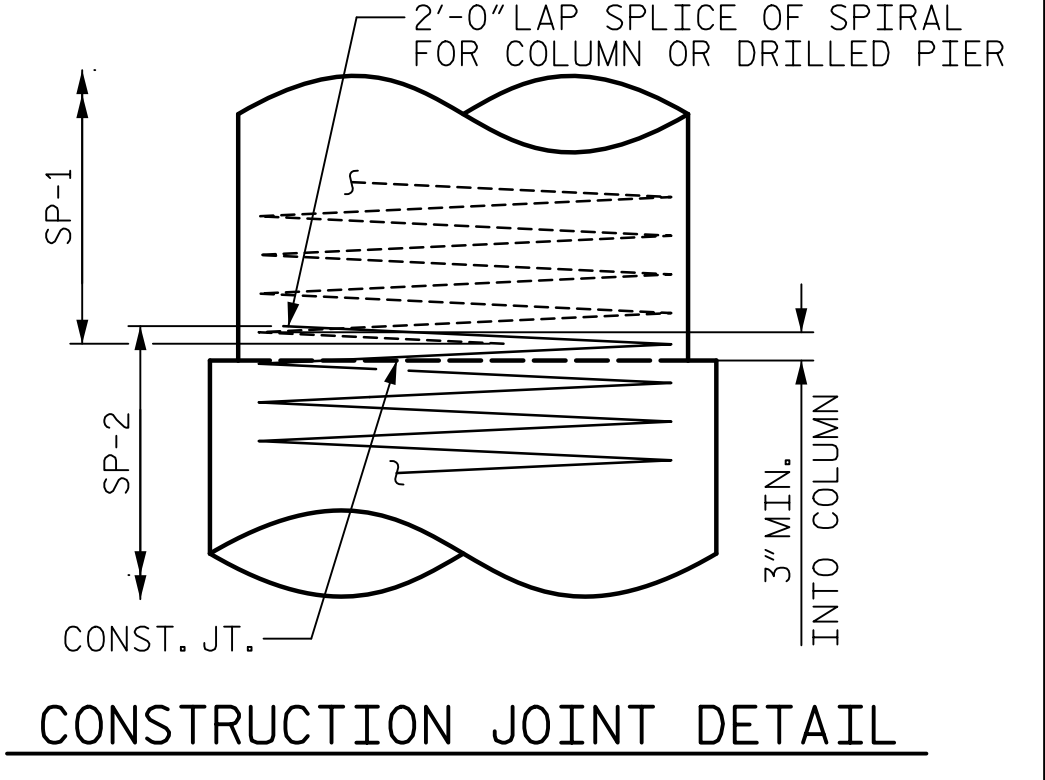


ELEVATION

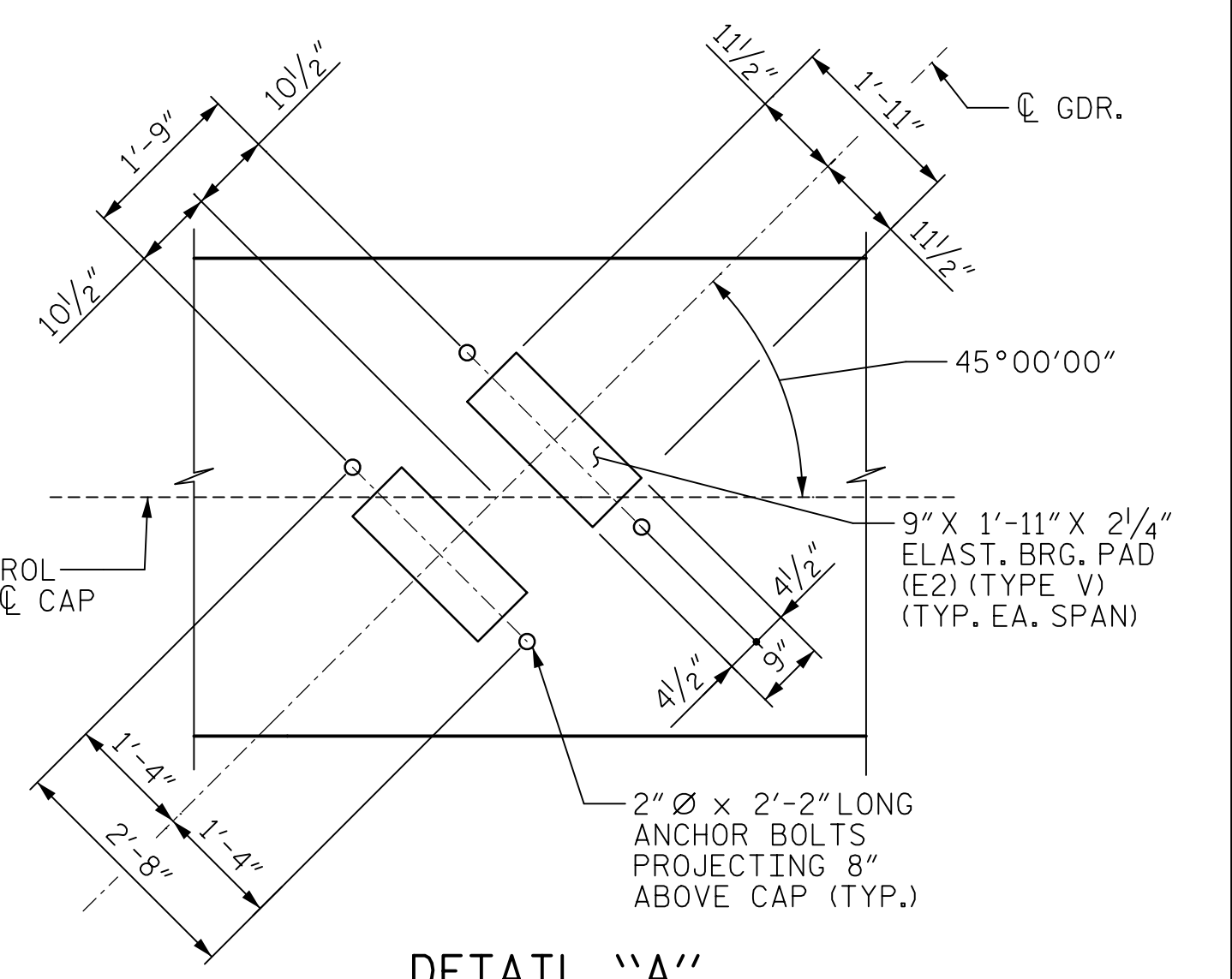
\*INVERT ALTERNATE PAIR OF STIRRUPS

NOTES

- STIRRUPS AND "U" BARS IN CAP MAY BE SHIFTED SLIGHTLY TO CLEAR ANCHOR BOLTS.
- ALL STEEL IN THE DRILLED PIERS IS INCLUDED IN THE PAY ITEMS FOR "REINFORCING STEEL" AND "SPIRAL COLUMN REINFORCING STEEL".
- FOR DRILLED PIERS, SEE SECTION 411 OF THE STANDARD SPECIFICATIONS.
- THE CONTRACTOR'S ATTENTION IS CALLED TO THE FACT THAT THE LONGITUDINAL REINFORCEMENT FOR THE DRILLED PIERS IS DELETED WITH 3 FEET OF EXTRA LENGTH.
- THE LOCATION OF THE CONSTRUCTION JOINT IN THE DRILLED PIERS AT BENTS 1 AND 4 IS BASED ON AN APPROXIMATE GROUND LINE ELEVATION. IF THE CONSTRUCTION JOINT IS ABOVE THE ACTUAL GROUND ELEVATION, THE CONTRACTOR SHALL PLACE THE CONSTRUCTION JOINT 1 FOOT BELOW THE GROUND LINE.
- FOR SECTIONS A-A AND B-B, ELEVATIONS A-K AND DIMENSIONS A-C, SEE SHEET 2 OF 3.
- HOOKS ON "V" BARS MAY BE TURNED AS NECESSARY FOR PLACING REINFORCING STEEL.



CONSTRUCTION JOINT DETAIL



DETAIL "A"

PROJECT NO. BR-0044  
ROCKINGHAM COUNTY  
STATION: 21+97.00 -L-

SHEET 1 OF 3

**AECOM**  
AECOM TECHNICAL SERVICES OF NC, INC.  
5438 WADE PARK BOULEVARD, SUITE 200  
RALEIGH, NC 27607  
(919) 854-4200  
www.aecom.com  
AECOM License No. F-0342

Professional Engineer Seal  
No. 041343  
Gregory R. Cox  
5/15/2022

STATE OF NORTH CAROLINA DEPARTMENT OF TRANSPORTATION RALEIGH					
SUBSTRUCTURE					
BENTS 1-4					
REVISIONS					
NO.	BY:	DATE:	NO.	BY:	DATE:
1			3		
2			4		
SHEET NO.					S-31
TOTAL SHEETS					39

DRAWN BY : M.K. TOM  
CHECKED BY : G.R. COLS  
DESIGNED BY : S. NATARAJAN  
DESIGN CHECKED BY : G.R. COLS

DATE : 11/2019  
DATE : 11/2019  
DATE : 11/2019  
DATE : 11/2019

DOCUMENT NOT CONSIDERED FINAL UNLESS ALL SIGNATURES COMPLETED

END ELEVATION