

DATE: 3/29/2019
TIME: 2:25:52 PM

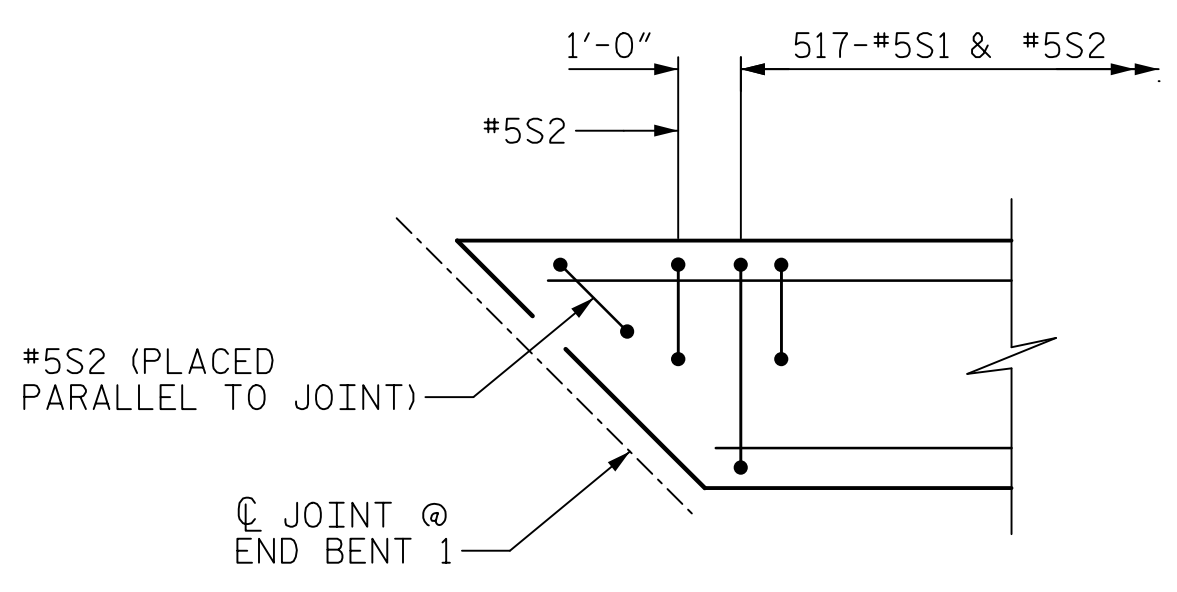
USER: BinJiang\BinJiang.dwg
DIN: R:\Structures\04 Drawings\01_0041_BR0044_LSMU_CBR02.dwg

NOTES

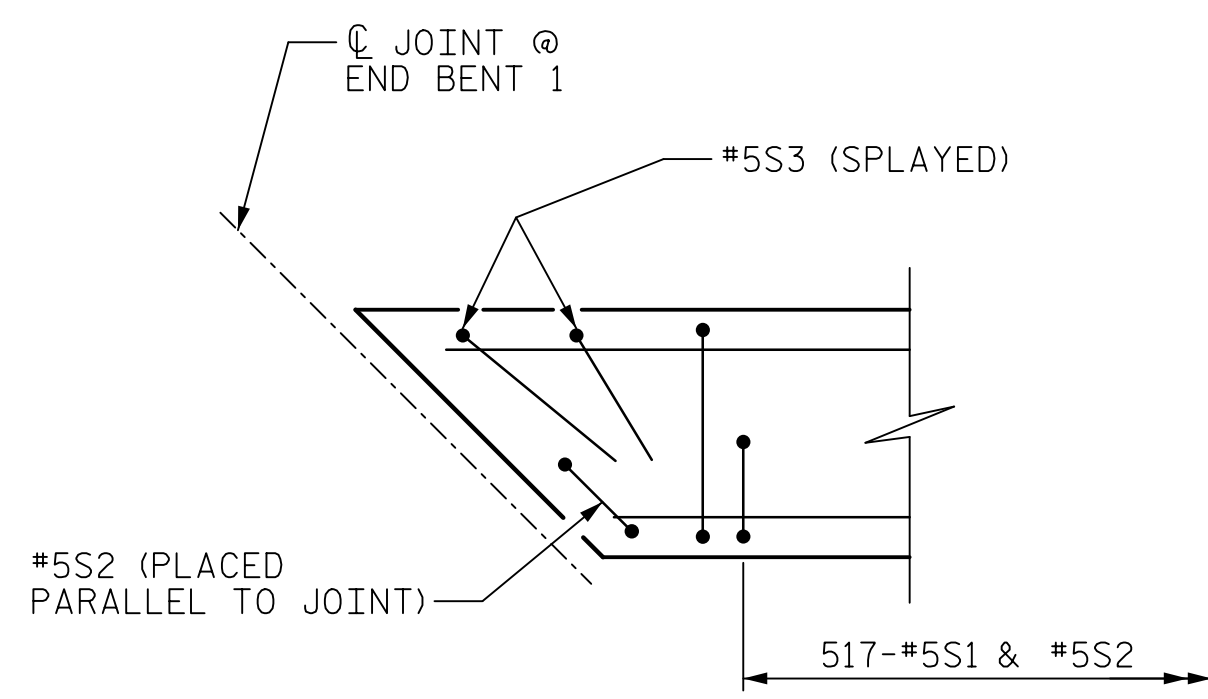
THE BARRIER RAIL IN EACH SPAN SHALL NOT BE CAST UNTIL ALL SLAB CONCRETE IN THAT SPAN HAS BEEN CAST AND HAS REACHED A MINIMUM COMPRESSIVE STRENGTH OF 3,000 PSI.

ALL REINFORCING STEEL IN BARRIER RAILS SHALL BE EPOXY COATED.

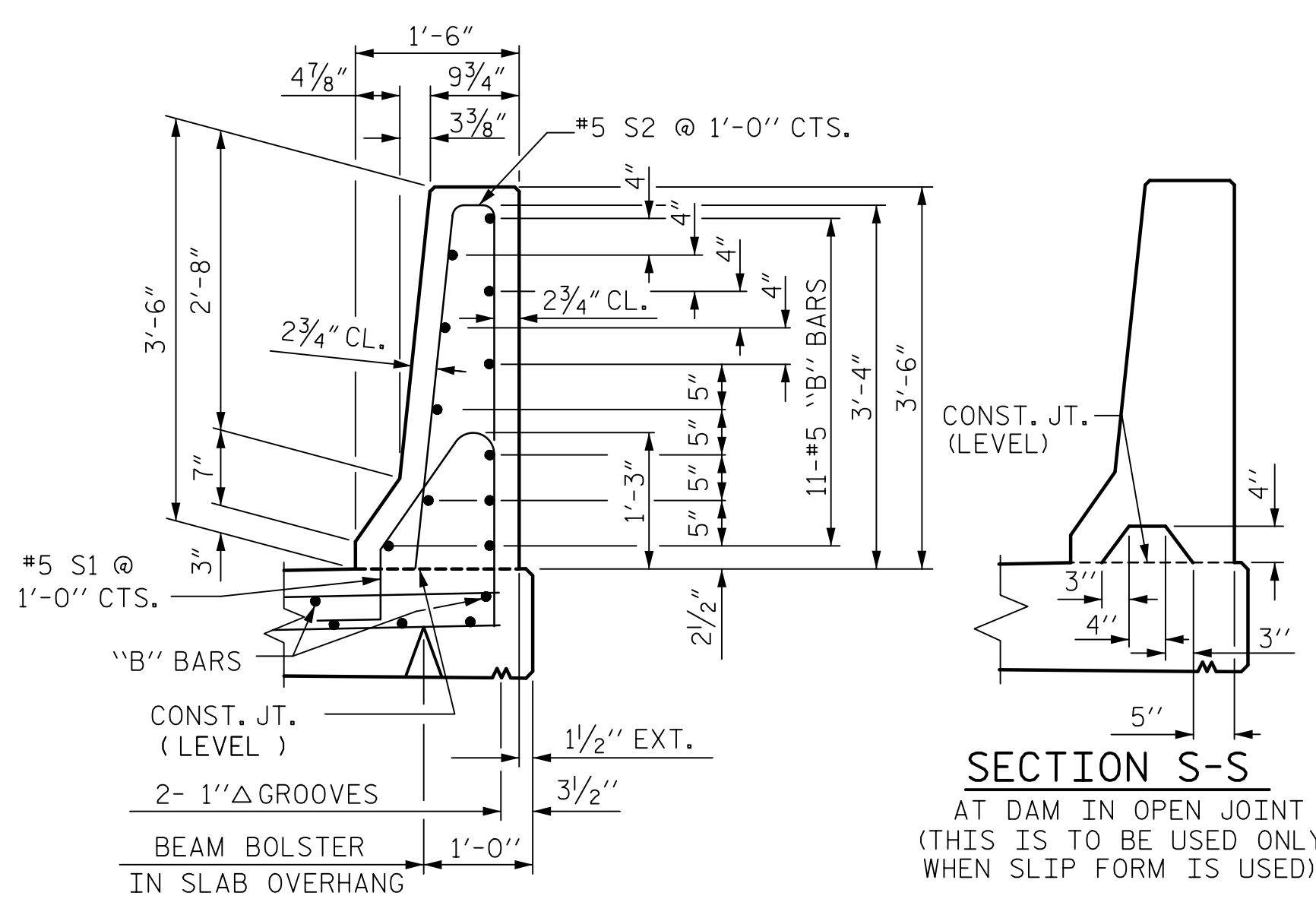
GROOVED CONTRACTION JOINTS, 1/2" IN DEPTH, SHALL BE TOOLED IN ALL EXPOSED FACES OF THE BARRIER RAIL AND IN ACCORDANCE WITH ARTICLE 825-10(B) OF THE STANDARD SPECIFICATIONS. THE CONTRACTION JOINT SHALL BE LOCATED AT EACH THIRD POINT BETWEEN BARRIER RAIL EXPANSION JOINTS. ONLY ONE CONTRACTION JOINT IS REQUIRED AT MIDPOINT OF BARRIER RAIL SEGMENTS LESS THAN 20 FEET IN LENGTH AND NO CONTRACTION JOINTS ARE REQUIRED FOR THOSE SEGMENTS LESS THAN 10 FEET IN LENGTH.



DETAIL "A"
END BENT 2 SIMILAR BY ROTATION

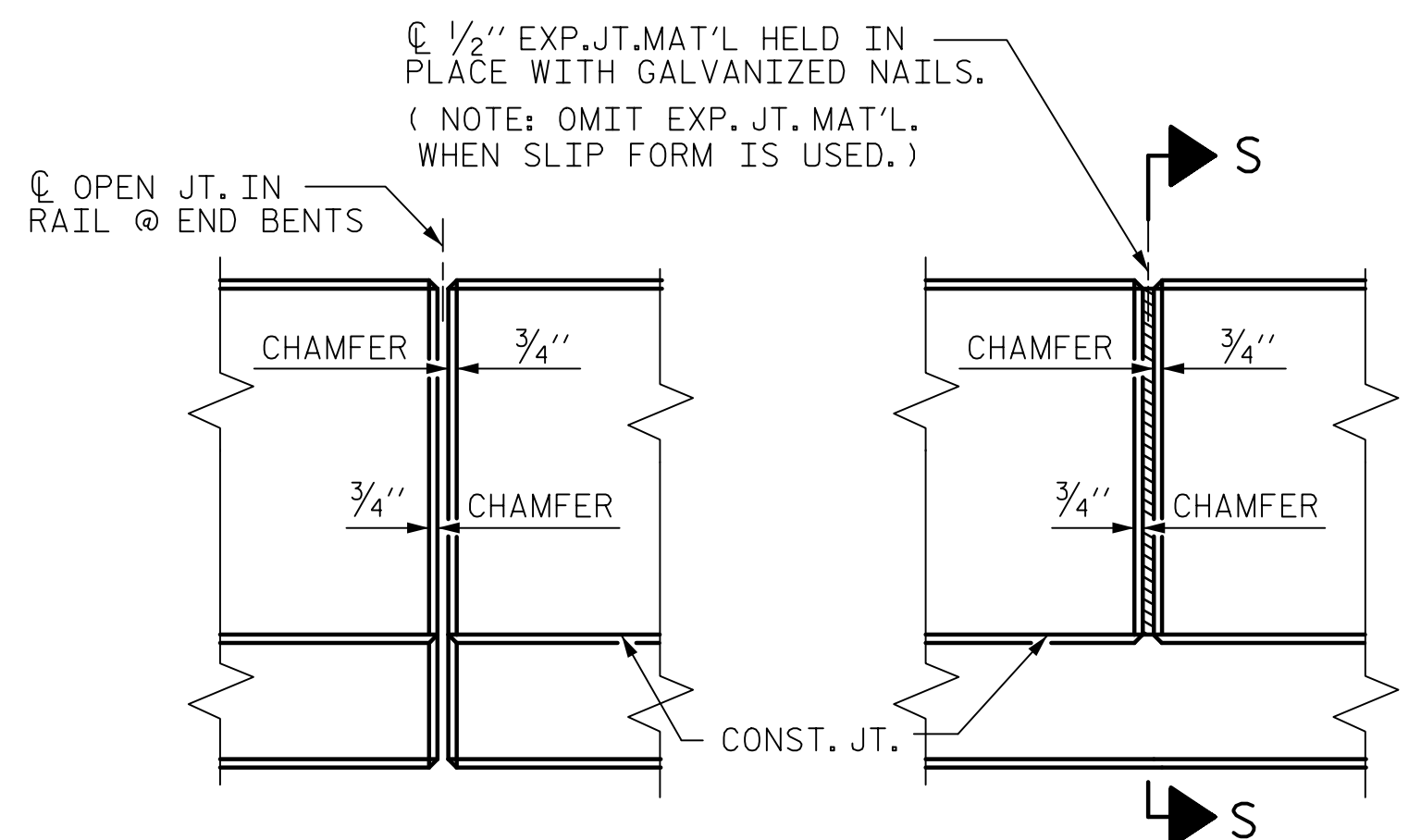


DETAIL "B"
END BENT 2 SIMILAR BY ROTATION

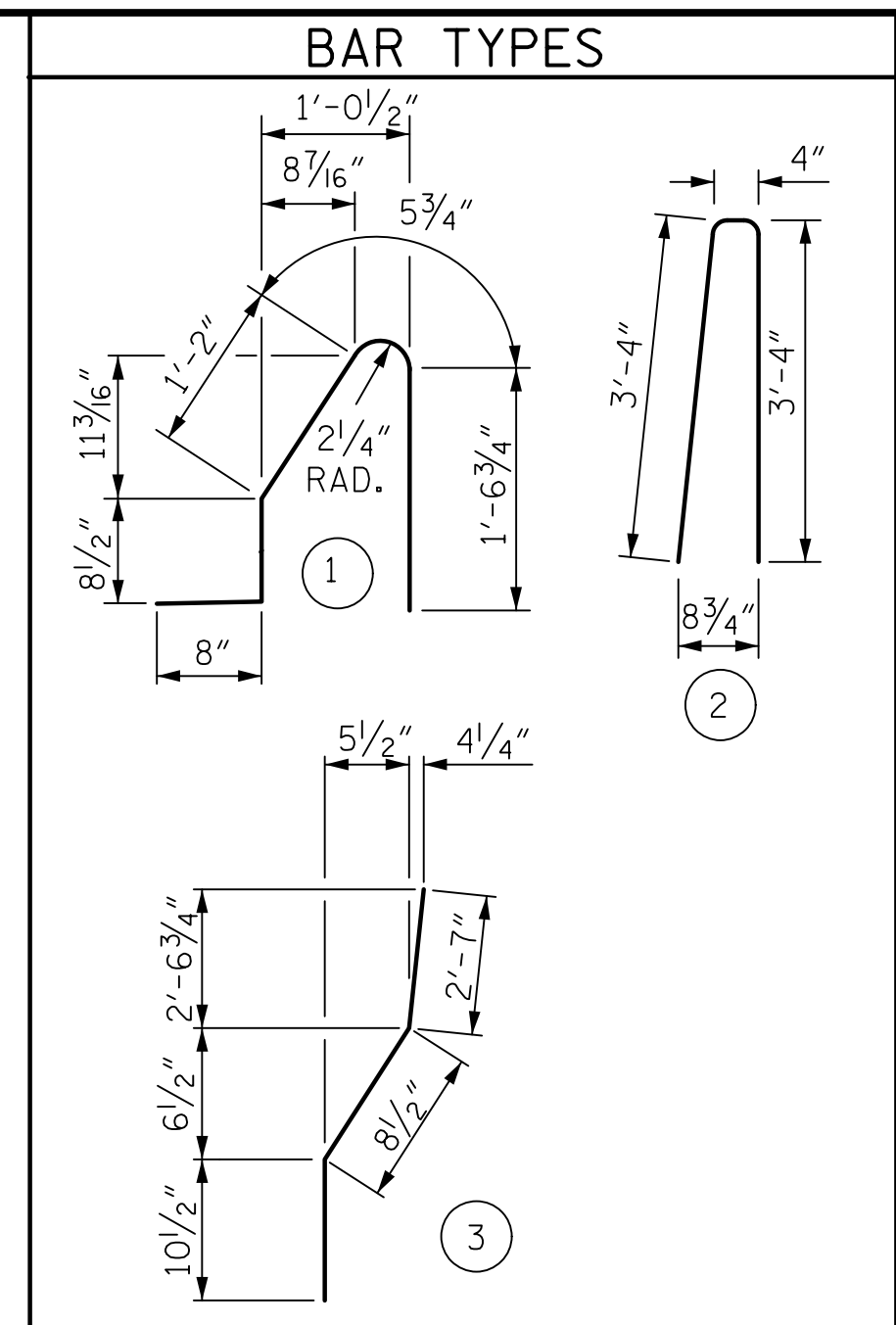


SECTION THRU RAIL

SECTION S-S
AT DAM IN OPEN JOINT
(THIS IS TO BE USED ONLY WHEN SLIP FORM IS USED)



ELEVATION AT EXPANSION JOINTS
BARRIER RAIL DETAILS



ALL BAR DIMENSIONS ARE OUT TO OUT

BILL OF MATERIAL

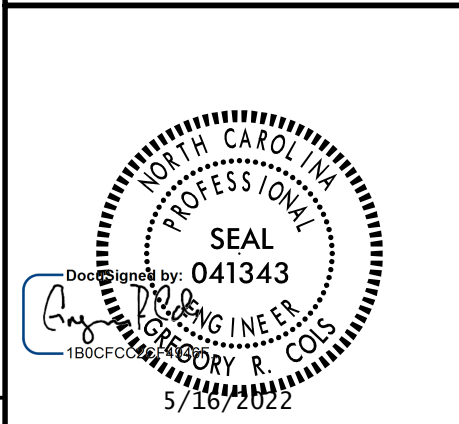
FOR CONCRETE BARRIER RAIL ONLY

BAR	NO.	SIZE	TYPE	LENGTH	WEIGHT
* B1	374	#5	STR	27'-10"	10,857
* B2	22	#5	STR	11'-6"	264
* B3	22	#5	STR	12'-4"	283
* B4	22	#5	STR	11'-0"	252
* B5	22	#5	STR	10'-2"	233
* S1	1034	#5	1	4'-7"	4943
* S2	1040	#5	2	7'-0"	7593
* S3	4	#5	3	4'-2"	17

* EPOXY COATED REINFORCING STEEL	24,442 LBS.
CLASS AA CONCRETE	141 CU. YDS.
CONCRETE BARRIER RAIL	1036.6 LIN. FT.

PROJECT NO. BR-0044
ROCKINGHAM COUNTY
STATION: 21+97.00 -L-

SHEET 2 OF 2



STATE OF NORTH CAROLINA
DEPARTMENT OF TRANSPORTATION
RALEIGH
STANDARD
CONCRETE
BARRIER RAIL

REVISIONS						SHEET NO.
NO.	BY:	DATE:	NO.	BY:	DATE:	S-22
1			3			TOTAL SHEETS
2			4			39

DOCUMENT NOT CONSIDERED FINAL UNLESS ALL SIGNATURES COMPLETED

ASSEMBLED BY : A. JIANG	DATE : 6/2019
CHECKED BY : G.R. COLS	DATE : 6/2019
DESIGNED BY : A. JIANG	DATE : 6/2019
DESIGN CHECKED BY : G.R. COLS	DATE : 6/2019
DRAWN BY : ARB 5/87	REV. 7/12 MAA/GM
CHECKED BY : SJD 9/87	REV. 6/13 MAA/GM
	REV. 12/17 MAA/THC