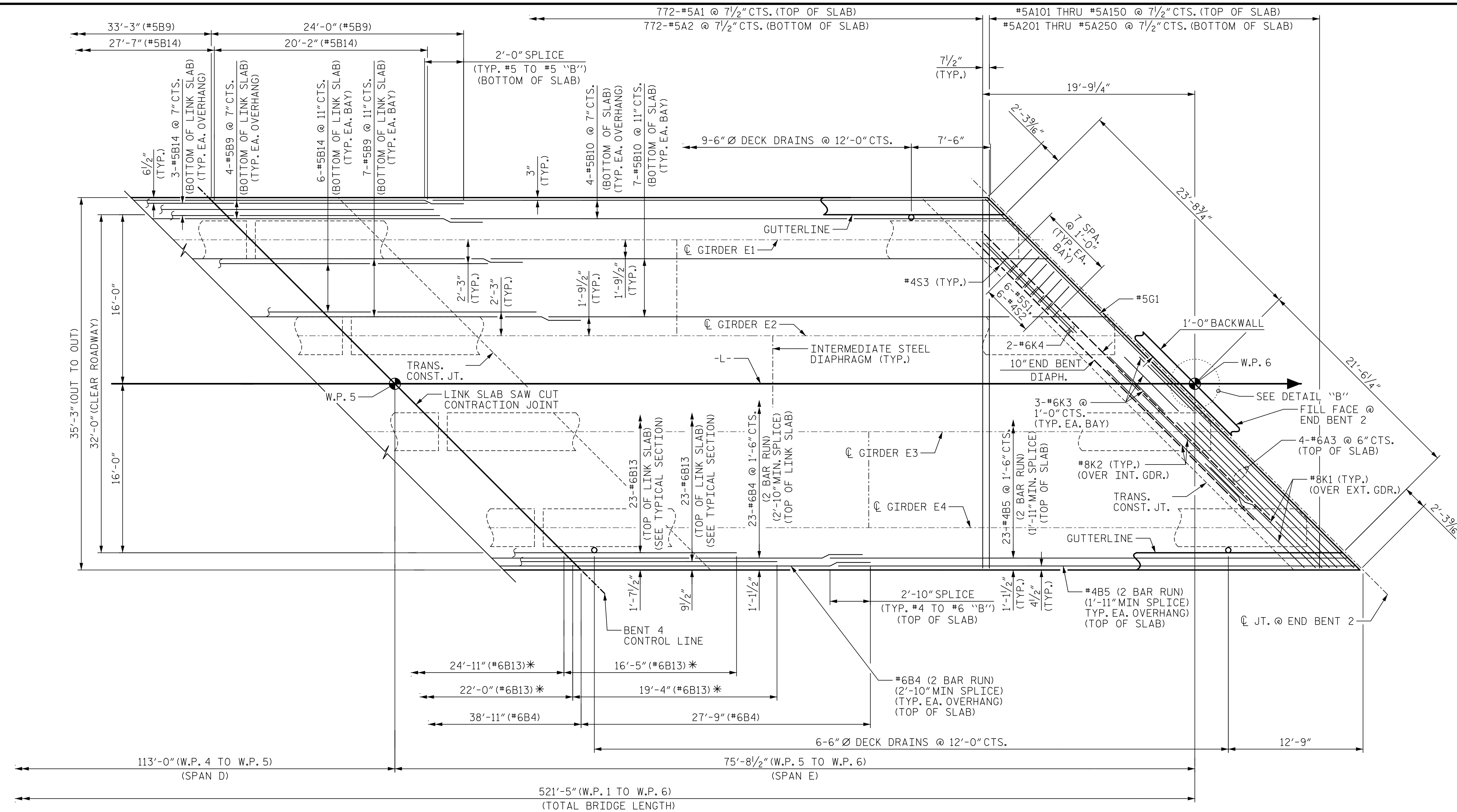
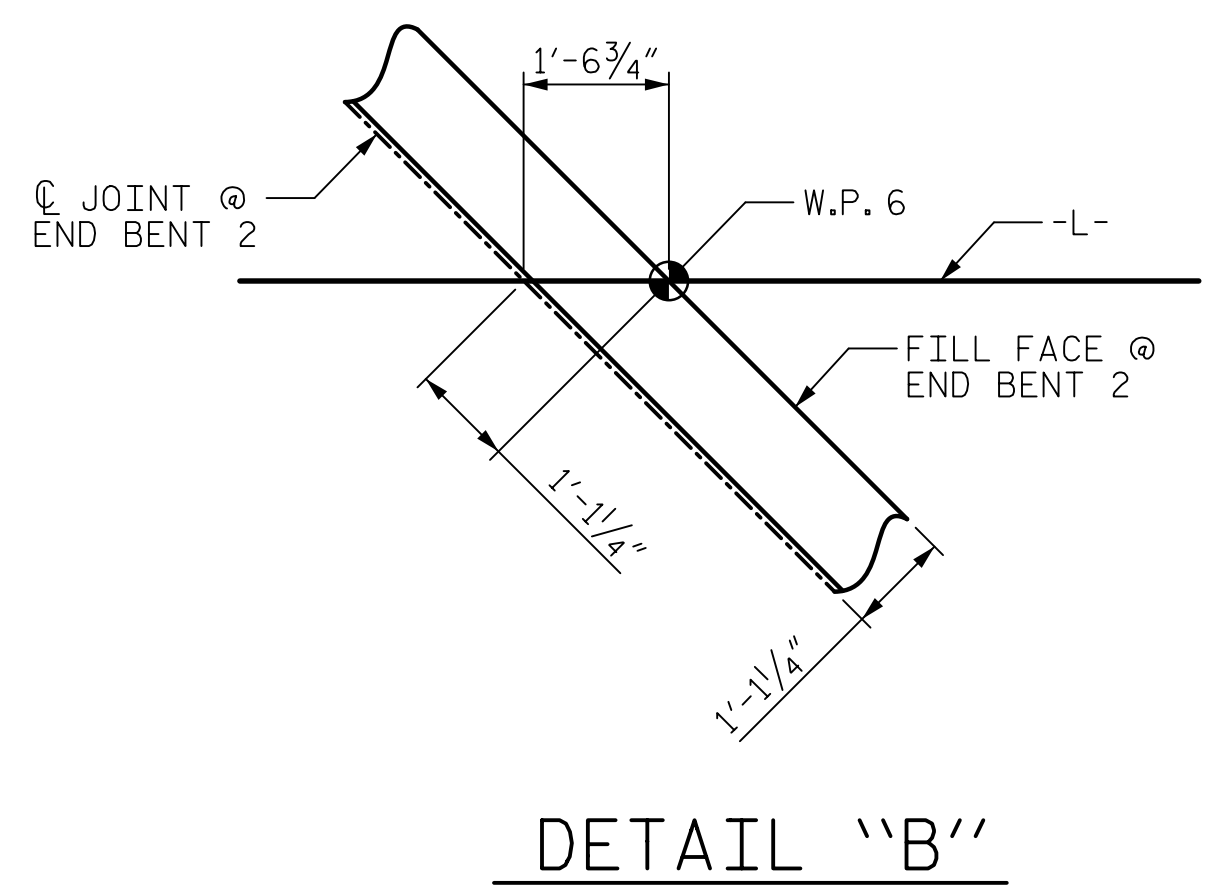


DATE: 3/29/2022
TIME: 2:58:59 PM



PLAN OF SPAN E

* STAGGER ALTERNATING RUNS OF #6B13 BY 2'-11", AS SHOWN.



DETAIL "B"

- NOTES:**
- FOR REINFORCING STEEL IN CONCRETE BARRIER RAIL, SEE "CONCRETE BARRIER RAIL" SHEETS.
 - FOR SECTION VIEWS, SEE "TYPICAL SECTION & DETAILS" SHEET.
 - FOR LOCATION OF INTERMEDIATE STEEL DIAPHRAGMS, SEE "FRAMING PLAN" SHEET.
 - FOR INTERMEDIATE STEEL DIAPHRAGM DETAILS, SEE "INTERMEDIATE STEEL DIAPHRAGMS FOR 63" MODIFIED BULB TEE PRESTRESSED CONCRETE GIRDERS" SHEET.
 - FOR LOCATION OF TRANSVERSE CONSTRUCTION JOINTS, SEE "POURING SEQUENCE" ON "SUPERSTRUCTURE BILL OF MATERIAL" SHEETS.
 - FOR TRANSVERSE CONSTRUCTION JOINT DETAIL, SEE "TYPICAL SECTION DETAILS" SHEET.
 - LINK SLAB SAW CUT CONTRACTION JOINTS EXTEND TO THE EDGE OF DECK ON BOTH SIDES.

PROJECT NO. BR-0044
 ROCKINGHAM COUNTY
 STATION: 21+97.00 -L-

SHEET 5 OF 5

AECOM
 AECOM TECHNICAL SERVICES OF NC, INC.
 5438 WADE PARK BOULEVARD, SUITE 200
 RALEIGH, NC 27607
 (919) 854-4200 www.aecom.com
 AECOM License No. F-0342

Professional Engineer Seal
 State of North Carolina
 No. 041343
 Date: 5/15/2022

STATE OF NORTH CAROLINA DEPARTMENT OF TRANSPORTATION RALEIGH					
SUPERSTRUCTURE					
PLAN OF SPANS SPAN E					
REVISIONS					
NO.	BY:	DATE:	NO.	BY:	DATE:
1			3		
2			4		
SHEET NO.					S-12
TOTAL SHEETS					39

DRAWN BY : B.D. HODACK	DATE : 02/2022
CHECKED BY : G.R. COLS	DATE : 03/2022
DESIGNED BY : B.D. HODACK	DATE : 02/2022
DESIGN CHECKED BY : G.R. COLS	DATE : 03/2022

DOCUMENT NOT CONSIDERED FINAL UNLESS ALL SIGNATURES COMPLETED

USER: BinJambouhack
DIR: R:\Structures\04 Drawings\01_0021_BR0044_LSMU_S05.dgn