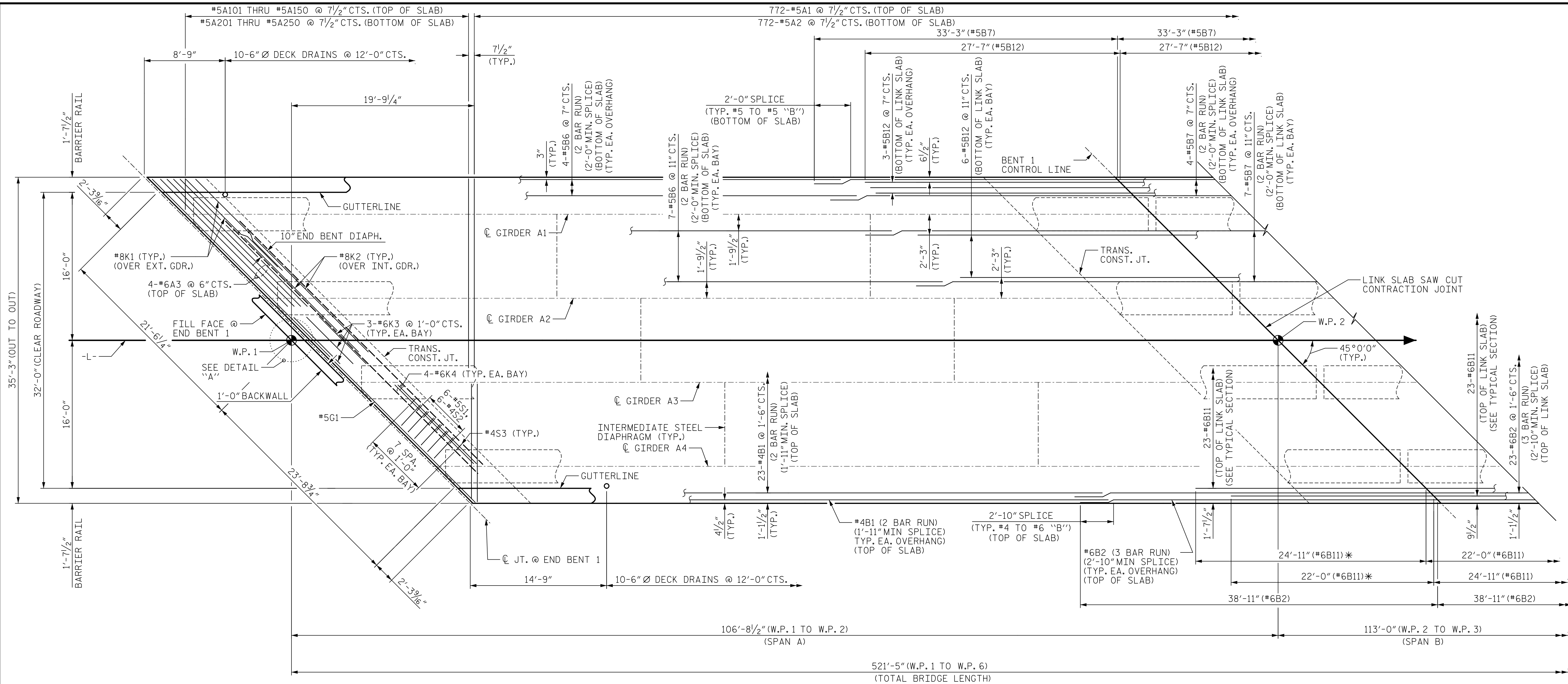


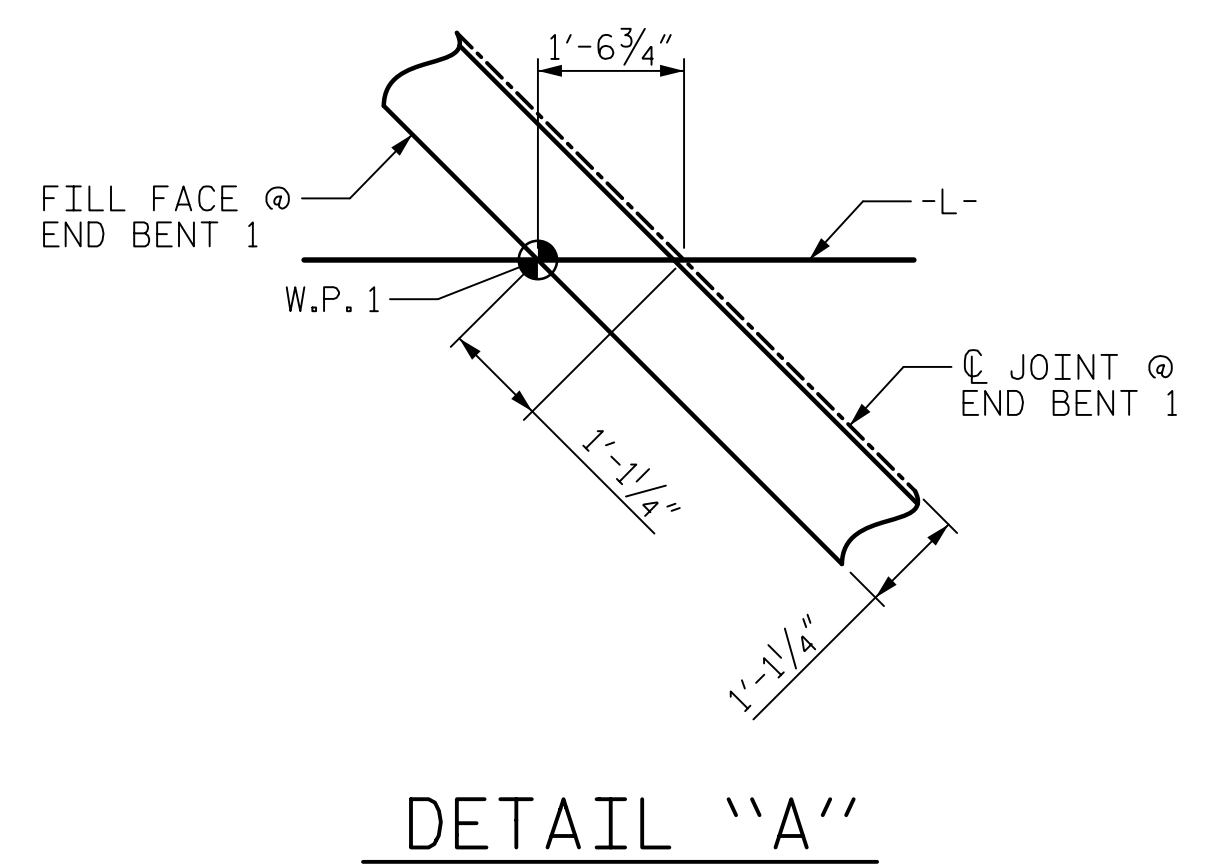
DATE: 3/29/2022
TIME: 2:44 PM

USER: Bin (17) 01640604
DN: F:\0517085 - BR-0044\BR04_CAD_GIS\910_CADD\DOT_TIP\Structures\4 Drawings\01_0015_BR0044_SMI_S01.dgn



PLAN OF SPAN A

* STAGGER ALTERNATING RUNS OF #6B11 BY 2'-11" AS SHOWN



NOTES:

- FOR REINFORCING STEEL IN CONCRETE BARRIER RAIL, SEE "CONCRETE BARRIER RAIL" SHEETS.
- FOR SECTION VIEWS, SEE "TYPICAL & SECTION DETAILS" SHEET.
- FOR LOCATION OF INTERMEDIATE STEEL DIAPHRAGMS, SEE "FRAMING PLAN" SHEET.
- FOR INTERMEDIATE STEEL DIAPHRAGM DETAILS, SEE "INTERMEDIATE STEEL DIAPHRAGMS FOR 63" MODIFIED BULB TEE PRESTRESSED CONCRETE GIRDERS" SHEET.
- FOR LOCATION OF TRANSVERSE CONSTRUCTION JOINTS, SEE "POURING SEQUENCE" ON "SUPERSTRUCTURE BILL OF MATERIAL" SHEETS.
- FOR TRANSVERSE CONSTRUCTION JOINT DETAIL, SEE "TYPICAL SECTION DETAILS" SHEET.
- LINK SLAB SAW CUT CONTRACTION JOINTS EXTEND TO THE EDGE OF DECK ON BOTH SIDES.

PROJECT NO. BR-0044
 ROCKINGHAM COUNTY
 STATION: 21+97.00 -L-

SHEET 1 OF 5

AECOM
 AECOM TECHNICAL SERVICES OF NC, INC.
 8438 WADE PARK BOULEVARD, SUITE 200
 RALEIGH, NC 27607
 (919) 854-4200 www.aecom.com
 AECOM License No. F-0342

Seal of a Professional Engineer for North Carolina, No. 041343, signed by Gregory P. Colby on 5/15/2022.

STATE OF NORTH CAROLINA
DEPARTMENT OF TRANSPORTATION
 RALEIGH
 SUPERSTRUCTURE
**PLAN OF SPANS
 SPAN A**

REVISIONS						SHEET NO.	
NO.	BY:	DATE:	NO.	BY:	DATE:	S-08	
1			3			TOTAL SHEETS	
2			4			39	

DRAWN BY : B.D. HODACK	DATE : 02/2022
CHECKED BY : G.R. COLS	DATE : 03/2022
DESIGNED BY : B.D. HODACK	DATE : 02/2022
DESIGN CHECKED BY : G.R. COLS	DATE : 03/2022

DOCUMENT NOT CONSIDERED FINAL UNLESS ALL SIGNATURES COMPLETED