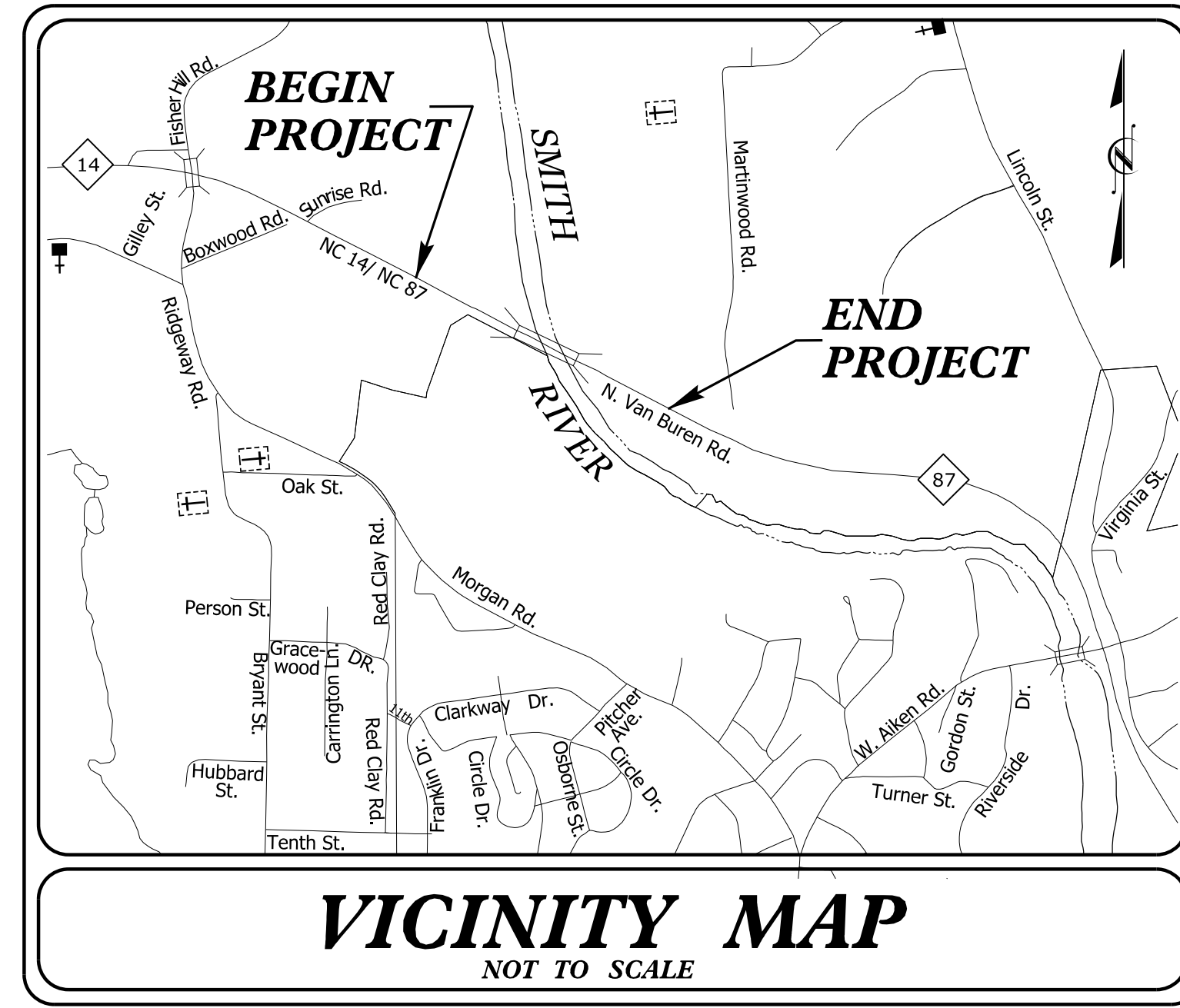
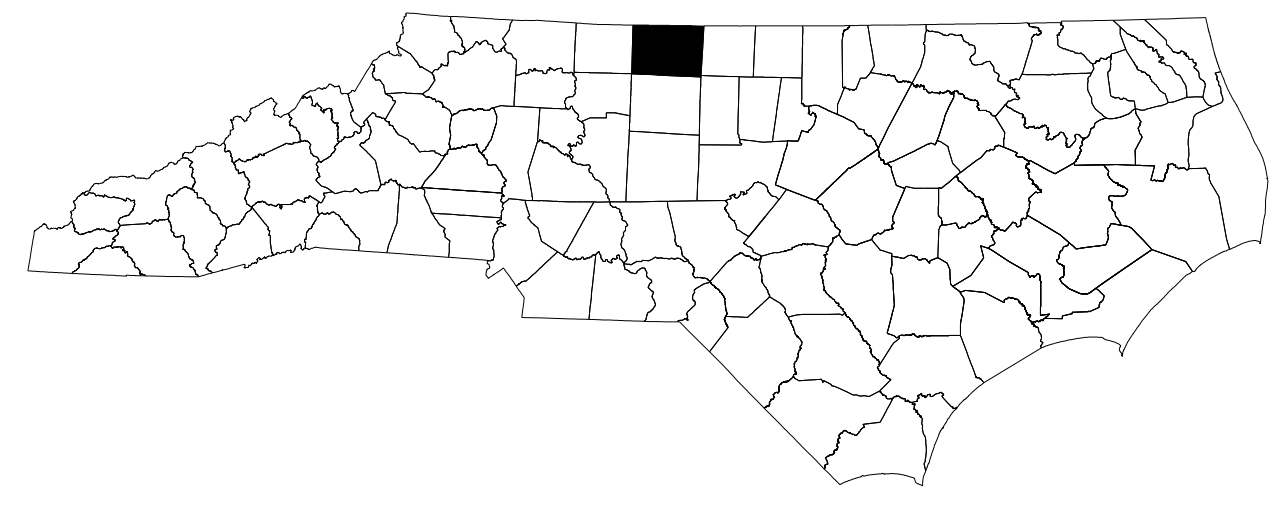


STATE OF NORTH CAROLINA  
DIVISION OF HIGHWAYS

**TRANSPORTATION MANAGEMENT PLAN**  
**ROCKINGHAM COUNTY**



**VICINITY MAP**  
NOT TO SCALE  
**LOCATION: BRIDGE NO. 168 ON NC 14/NC 87  
(N. VAN BUREN ROAD) OVER  
SMITH RIVER**

**INDEX OF SHEETS**

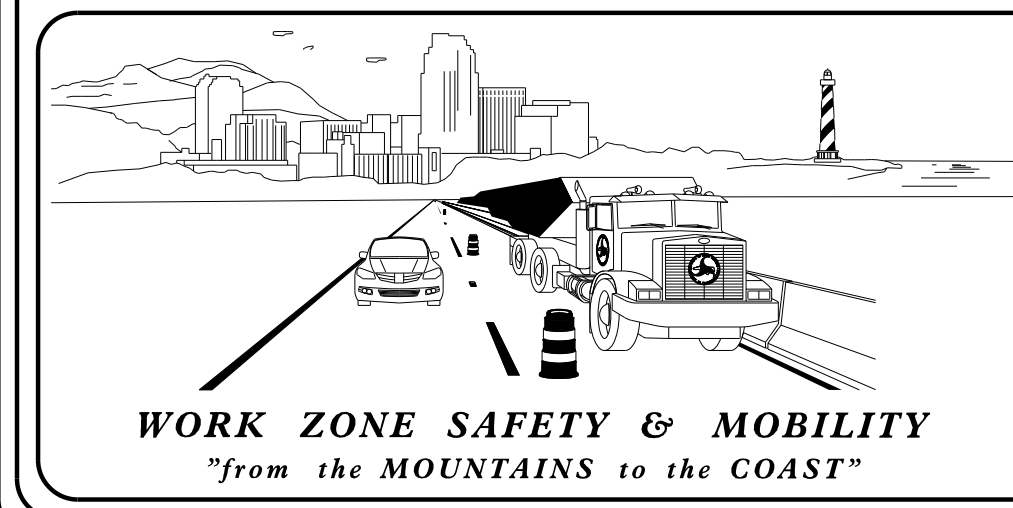
SHEET NO.	TITLE
TMP-1	TITLE SHEET, VICINITY MAP, AND INDEX OF SHEETS
TMP-1A	LIST OF APPLICABLE ROADWAY STANDARD DRAWINGS, AND LEGEND
TMP-1B	TRANSPORTATION OPERATIONS PLAN: (MANAGEMENT STRATEGIES, GENERAL NOTES, AND LOCAL NOTES)
TMP-2A	TEMPORARY SHORING DATA
TMP-2B	PORTABLE CONCRETE BARRIER AT TEMPORARY SHORING
TMP-3	TEMPORARY TRAFFIC CONTROL PHASING
TMP-4	TEMPORARY TRAFFIC CONTROL PHASE I DETAIL
TMP-5	TEMPORARY TRAFFIC CONTROL PHASE II DETAIL

SHEET NO.  
TMP-1

**BR-0044**

**TIP PROJECT:**

**DOCUMENT NOT CONSIDERED FINAL  
UNLESS ALL SIGNATURES COMPLETED**



**PLANS PREPARED BY:**

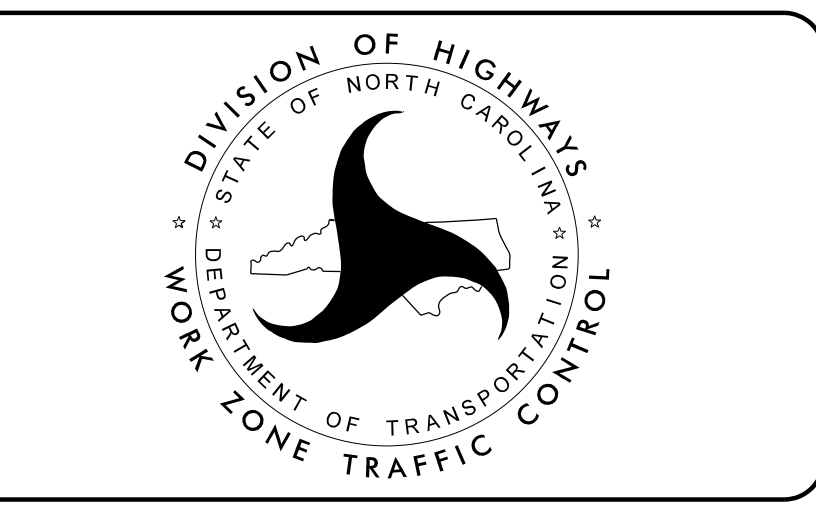
**GREG COLS, P.E.**  
PROJECT ENGINEER

**NEIL J. DEAN, P.E.**  
PROJECT DESIGN ENGINEER

**NCDOT CONTACTS:**

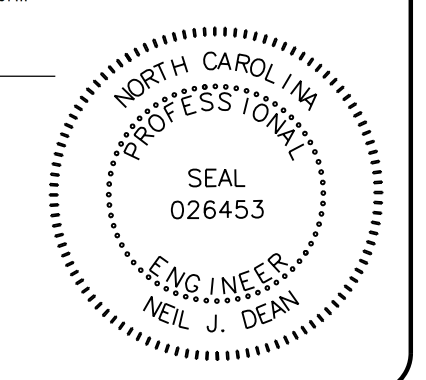
**KENNETH THORNEWELL, JR., P.E.**  
PROJECT ENGINEER

**JUSTIN BEAVER, P.E.**  
PROJECT DESIGN ENGINEER



**AECOM**  
NC Firm License No.: F-0342  
5438 Wade Park Boulevard  
Suite 200 Raleigh, NC 27607  
Phone: 919-461-1100

APPROVED: *Neil Dean*  
DATE: 4/8/2022



SEAL

4/6/2022  
R:\Traffic\TrafficControl\TC\BR0044\_TC\_TMP-1.dgn  
joanna.mccormack