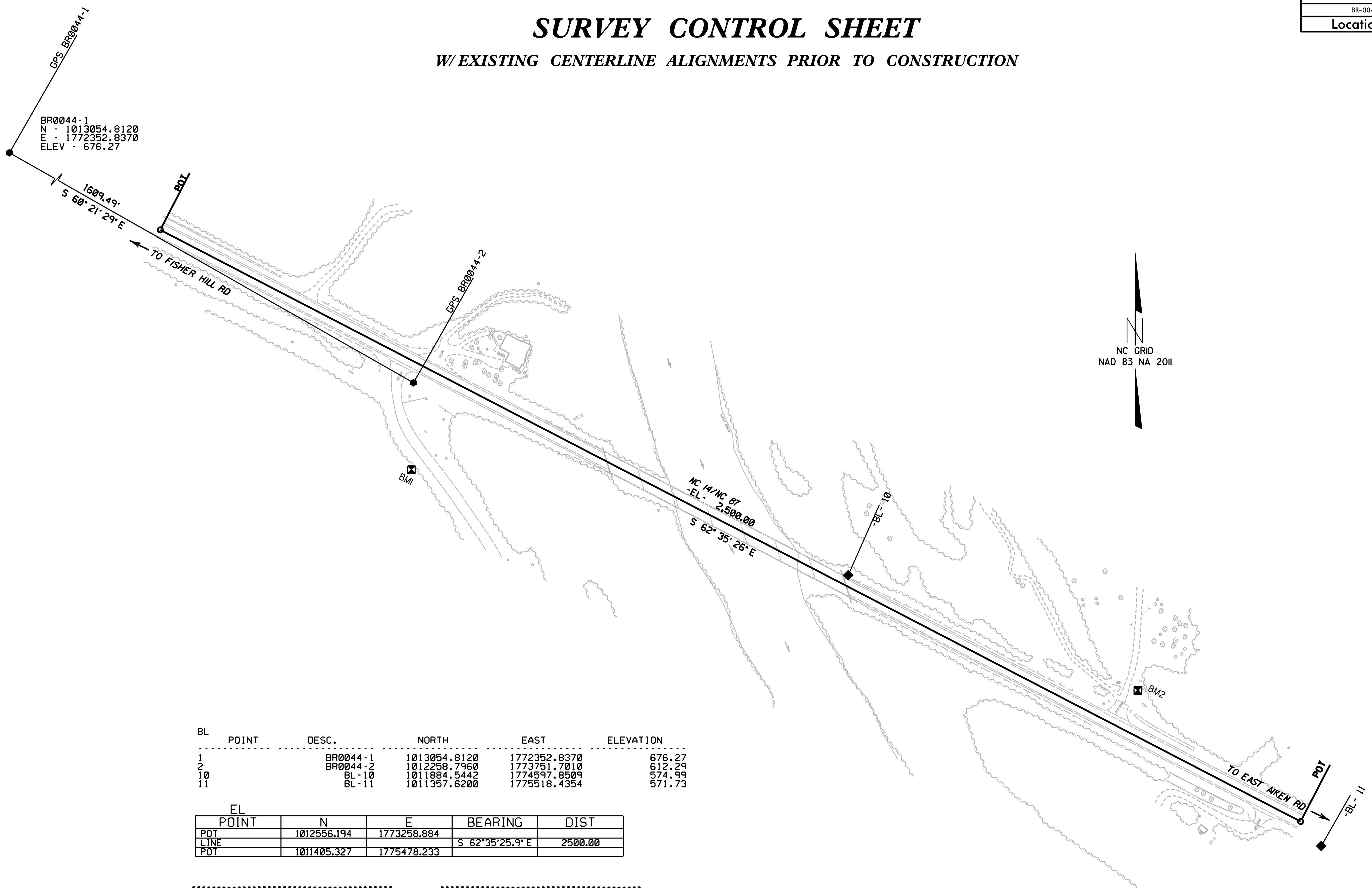


SURVEY CONTROL SHEET

W/ EXISTING CENTERLINE ALIGNMENTS PRIOR TO CONSTRUCTION

6/2/09



BL	POINT	DESC.	NORTH	EAST	ELEVATION
1		BR0044-1	1013054.8120	1772352.8370	676.27
2		BR0044-2	1012258.7960	1773751.7010	612.29
10		BL - 10	1011884.5442	1774597.8509	574.99
11		BL - 11	1011357.6200	1775518.4354	571.73

EL	POINT	N	E	BEARING	DIST
POT		1012556.194	1773258.884		
LINE				S 62° 35' 25.9" E	2500.00
POT		1011405.327	1775478.233		

.....
 BMI ELEVATION = 630.72
 N 1012090 E 1773748
 BL STATION 21+74.00 156 RIGHT
 RR SPIKE IN A 12' OAK

.....
 BM2 ELEVATION = 572.78
 N 1011660 E 1775161
 BL STATION 36+35.00 85 LEFT
 CHISELED SQ ON A CONC SIGN BASE

NOTES:

- PROJECT CONTROL WAS ESTABLISHED USING GNSS, THE GLOBAL NAVIGATION SATELLITE SYSTEM.
- THE SURVEY CONTROL DATA FOR THIS PROJECT HAS BEEN COMPILED FROM VARIOUS SOURCES. IF FURTHER INFORMATION REGARDING PROJECT CONTROL IS NEEDED, PLEASE CONTACT THE LOCATION AND SURVEYS UNIT.

REVISIONS

D:\S\2008_07\36\Projects\BR0044\microstation\CONTROL SHEETS\BR0044_LS_rw2c-1.dgn