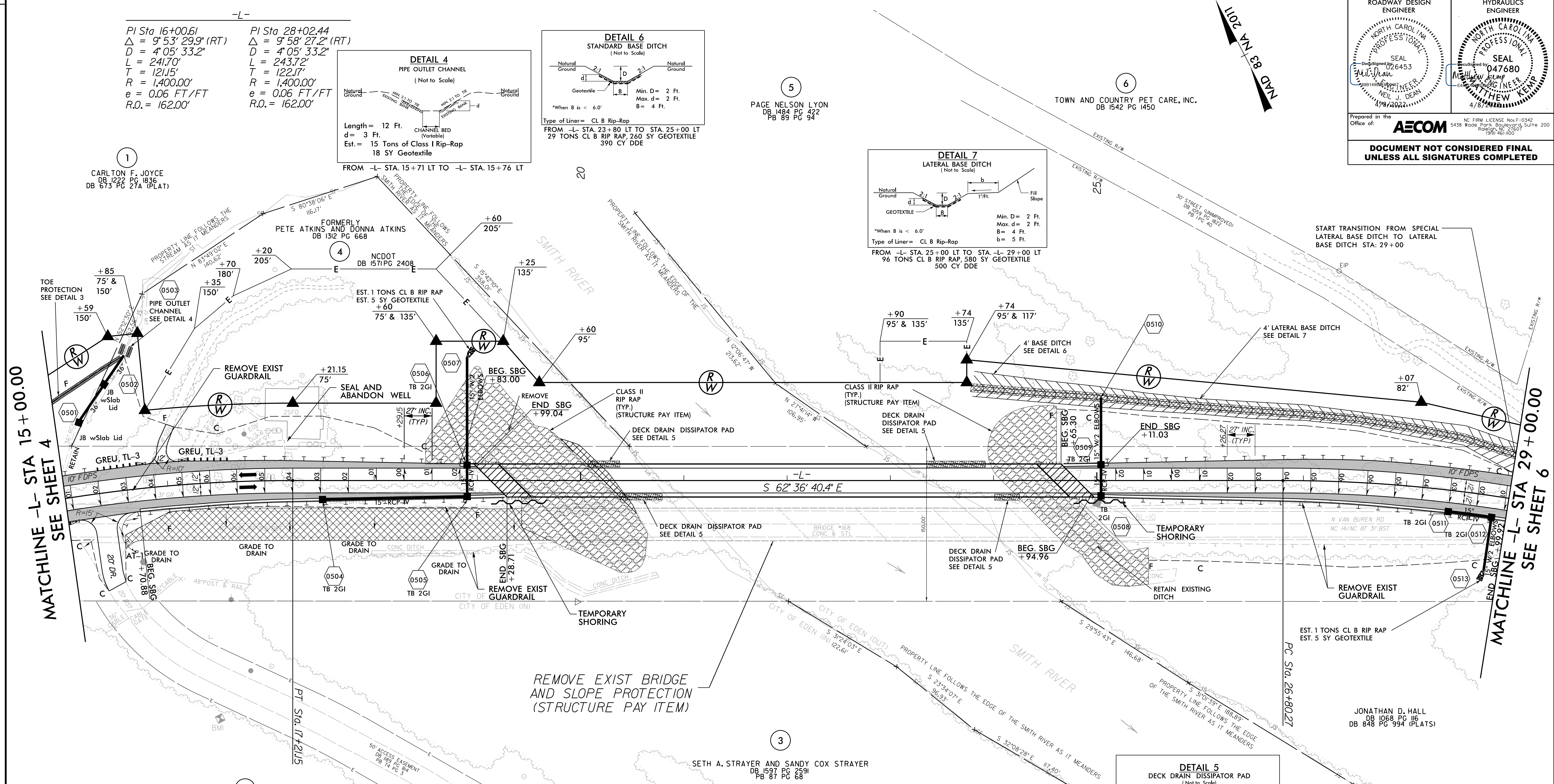
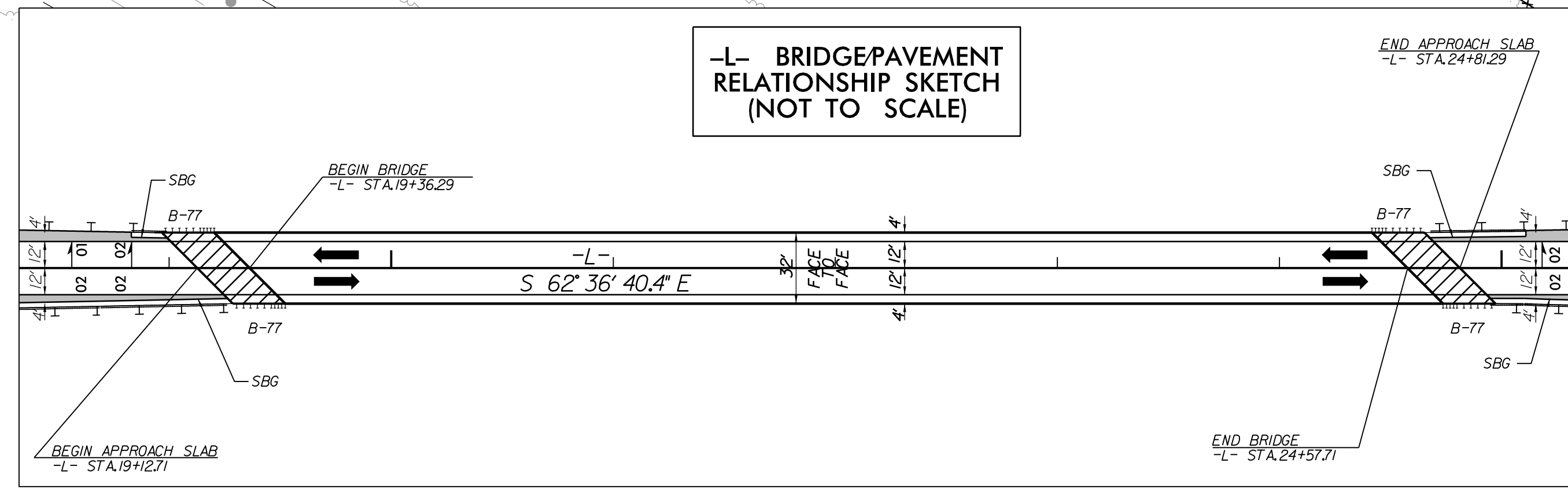
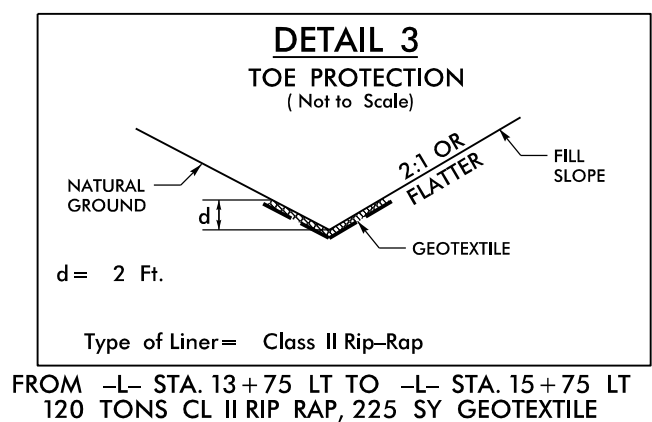
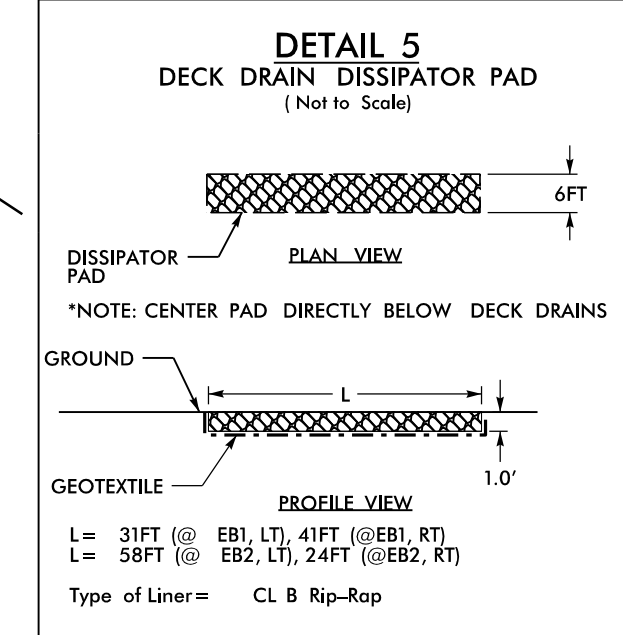
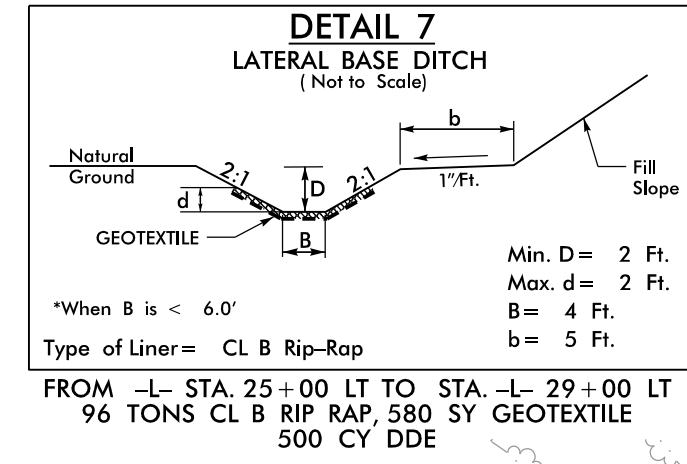
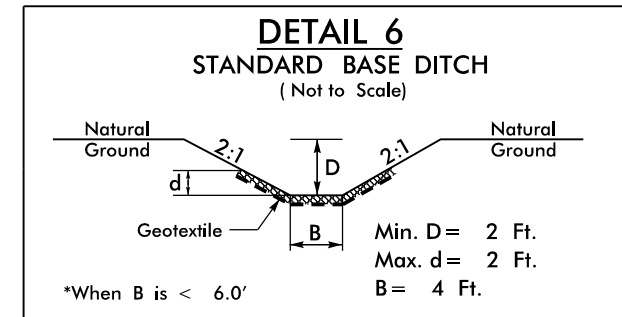
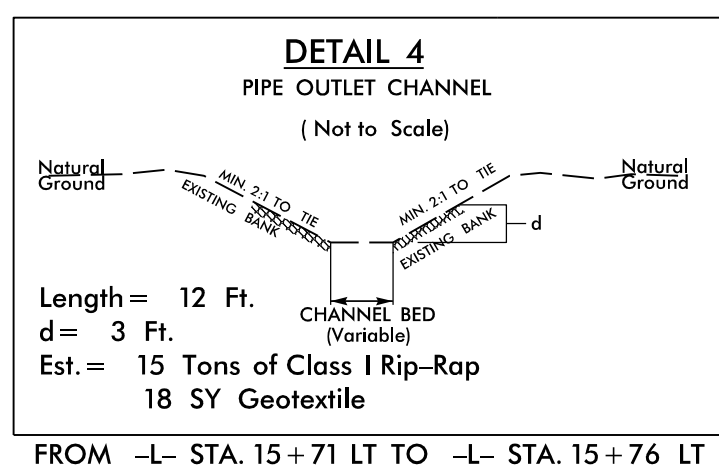


PROJECT REFERENCE NO. <i>BR-0044</i>		SHEET NO. <i>5</i>	
RW SHEET NO.			
ROADWAY DESIGN ENGINEER		HYDRAULICS ENGINEER	
Prepared in the Office of:			
		NC FIRM LICENSE No. F-0342 5438 Wade Park Boulevard, Suite 200 Raleigh, NC 27607 (919) 461-4000	
DOCUMENT NOT CONSIDERED FINAL UNLESS ALL SIGNATURES COMPLETED			



-L-

PI Sta 16+00.61 $\Delta = 9' 53'' 29.9''$ (RT) $D = 4' 05'' 33.2''$ $L = 241.70'$ $T = 121.15'$ $R = 1,400.00'$ $e = 0.06$ FT/FT $R.O. = 162.00'$	PI Sta 28+02.44 $\Delta = 9' 58'' 27.2''$ (RT) $D = 4' 05'' 33.2''$ $L = 243.72'$ $T = 122.17'$ $R = 1,400.00'$ $e = 0.06$ FT/FT $R.O. = 162.00'$
--	--



- PAVEMENT REMOVAL
- END BENT EXCAVATION SEE STRUCTURE PLANS (STRUCTURE PAY ITEM)

FOR -L- PROFILE SEE SHEET 7

FOR STRUCTURE PLANS SEE S-1 THROUGH S-44

REVISIONS
 5/14/99
 R:\P\3\30\2022\03\04\BR0044_r.dwg_psh05.dgn
 3/30/2022
 10:11:27 AM
 10/11/2022