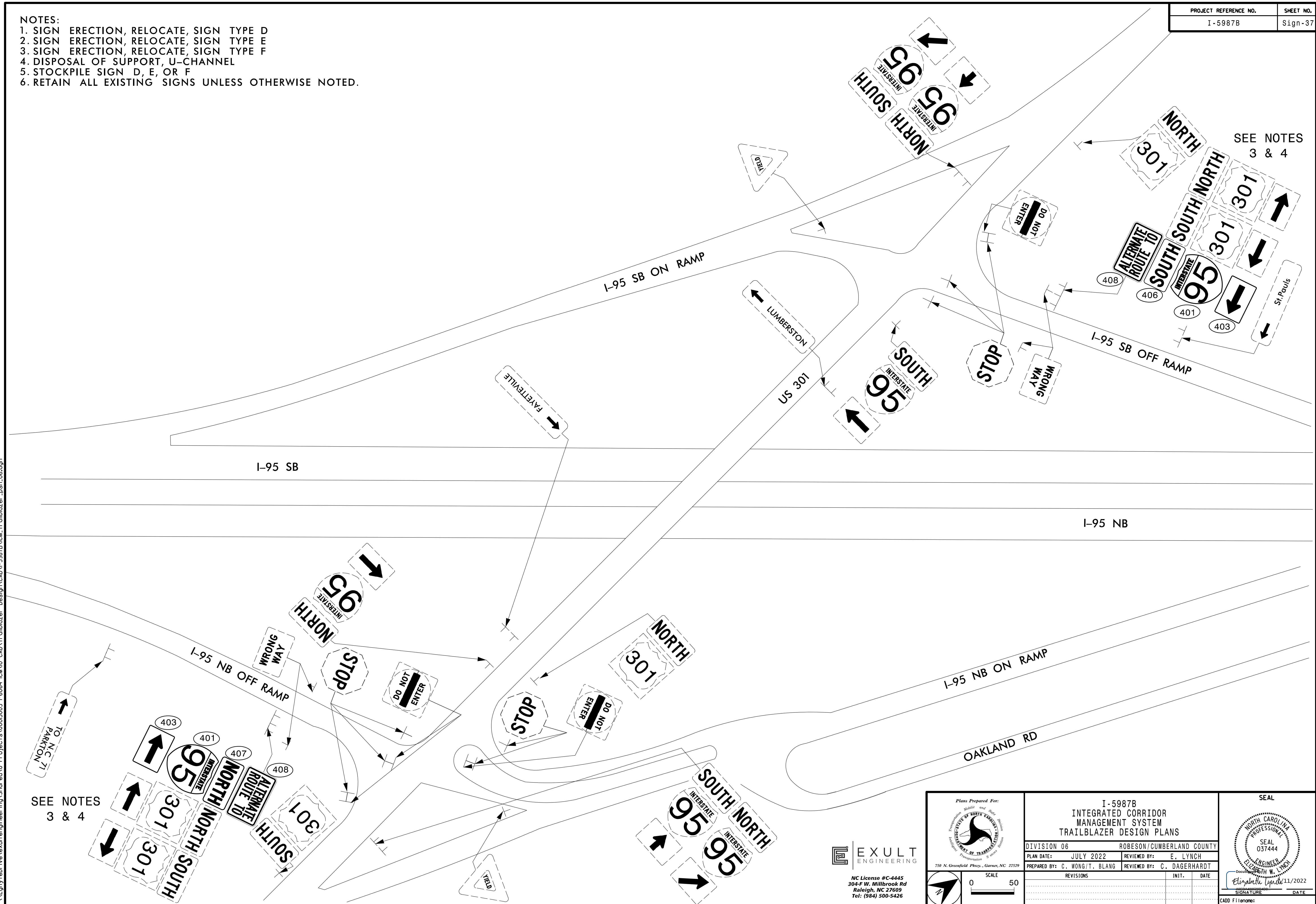


- NOTES:
1. SIGN ERECTION, RELOCATE, SIGN TYPE D
 2. SIGN ERECTION, RELOCATE, SIGN TYPE E
 3. SIGN ERECTION, RELOCATE, SIGN TYPE F
 4. DISPOSAL OF SUPPORT, U-CHANNEL
 5. STOCKPILE SIGN D, E, OR F
 6. RETAIN ALL EXISTING SIGNS UNLESS OTHERWISE NOTED.



SEE NOTES 3 & 4

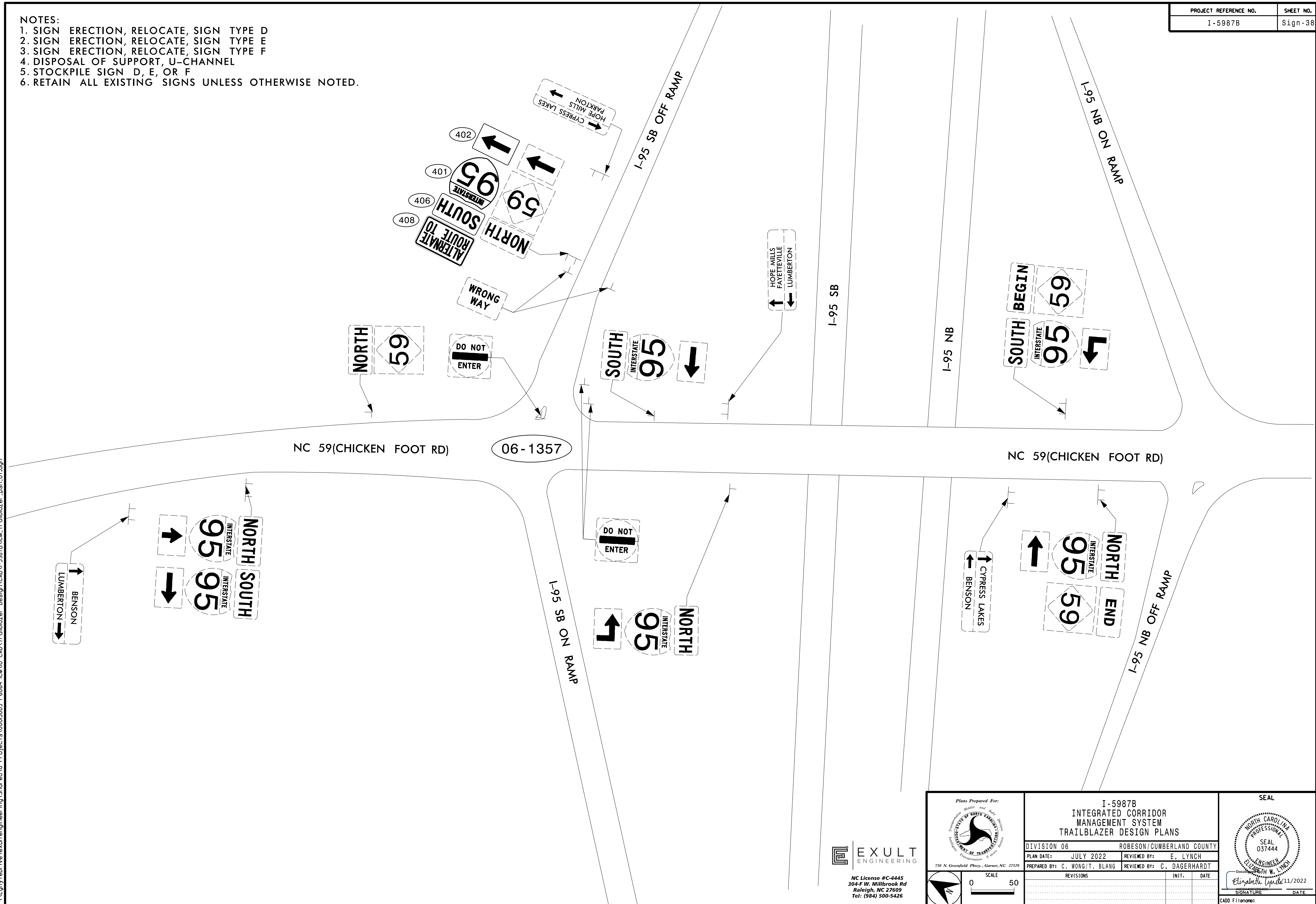
SEE NOTES 3 & 4

7/11/2022 \\Egnyr\drive\exult\engineering\Shored\0 Projects\00015005 1-6064 ICM10 CAD\Trailblazer Design\CAD\1-5987B\CM-Trailblazer_psh_06.dgn

EXULT ENGINEERING
 NC License #C-4445
 304-F W. Millbrook Rd
 Raleigh, NC 27609
 Tel: (984) 500-5426

	Plans Prepared For: I-5987B INTEGRATED CORRIDOR MANAGEMENT SYSTEM TRAILBLAZER DESIGN PLANS		SEAL
	DIVISION 06 PLAN DATE: JULY 2022 PREPARED BY: C. WONG/T. BLANG	ROBESON/CUMBERLAND COUNTY REVIEWED BY: E. LYNCH REVIEWED BY: C. DAGERHARDT	

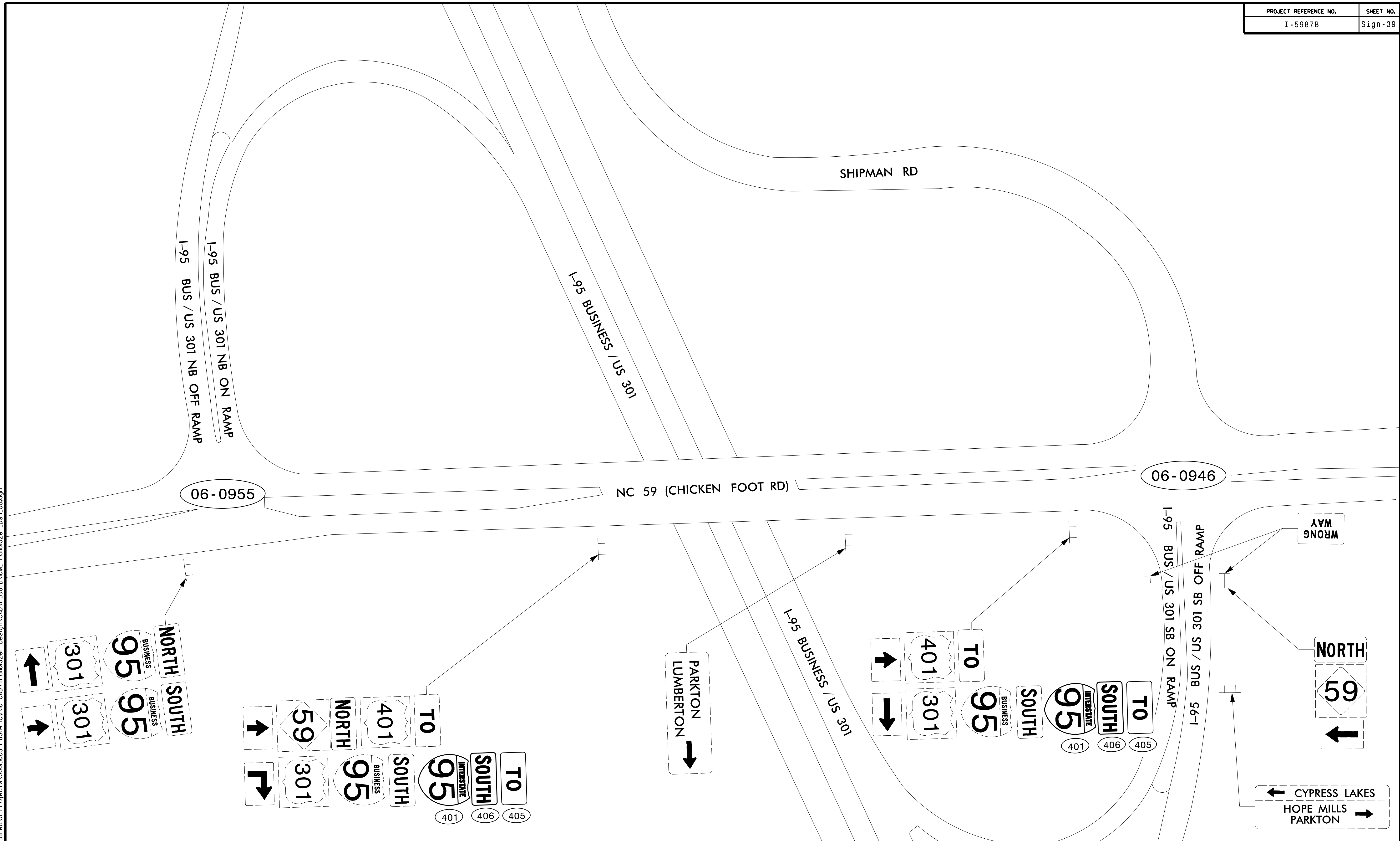
- NOTES:
 1. SIGN ERECTION, RELOCATE, SIGN TYPE D
 2. SIGN ERECTION, RELOCATE, SIGN TYPE E
 3. SIGN ERECTION, RELOCATE, SIGN TYPE F
 4. DISPOSAL OF SUPPORT, U-CHANNEL
 5. STOCKPILE SIGN D, E, OR F
 6. RETAIN ALL EXISTING SIGNS UNLESS OTHERWISE NOTED.



7/11/2022 \\Egnyte\Drive\exult\engineering\Shored\0 Projects\0005005 I-6064 ICM10 CAD\Trailblazer Design\CAD\I-5987B\CM-Trailblazer_psh_07.dgn

EXULT ENGINEERING
 NC License #C-4445
 304-F W. Millbrook Rd
 Raleigh, NC 27609
 Tel: (984) 500-5426

	Plans Prepared For: I-5987B INTEGRATED CORRIDOR MANAGEMENT SYSTEM TRAILBLAZER DESIGN PLANS		SEAL
	DIVISION 06 PLAN DATE: JULY 2022 PREPARED BY: C. WONG/T. BLANG	ROBESON/CUMBERLAND COUNTY REVIEWED BY: E. LYNCH REVIEWED BY: C. DAGERHARDT	
SCALE 0 50		REVISIONS INIT. DATE	SIGNATURE DATE



- NOTES:**
1. SIGN ERECTION, RELOCATE, SIGN TYPE D
 2. SIGN ERECTION, RELOCATE, SIGN TYPE E
 3. SIGN ERECTION, RELOCATE, SIGN TYPE F
 4. DISPOSAL OF SUPPORT, U-CHANNEL
 5. STOCKPILE SIGN D, E, OR F
 6. RETAIN ALL EXISTING SIGNS UNLESS OTHERWISE NOTED.

7/11/2022 \\Egnyt\0\ive\exult\engineering\Shored\0 Projects\0005005 I-6064 ICM10 CAD\Trailblazer Design\CAD\I-5987B\CM Trailblazer_psh_08.dgn

EXULT ENGINEERING

NC License #C-4445
304-F W. Millbrook Rd
Raleigh, NC 27609
Tel: (984) 500-5426

Plans Prepared For:

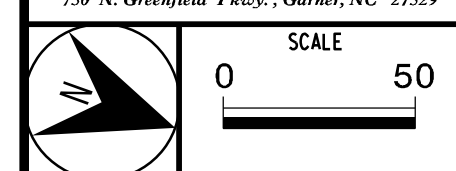
750 N. Greenfield Pkwy., Garner, NC 27529

I-5987B INTEGRATED CORRIDOR MANAGEMENT SYSTEM TRAILBLAZER DESIGN PLANS	
DIVISION 06	ROBESON/CUMBERLAND COUNTY
PLAN DATE: JULY 2022	REVIEWED BY: E. LYNCH
PREPARED BY: C. WONG/T. BLANG	REVIEWED BY: C. DAGERHARDT
REVISIONS	INIT. DATE

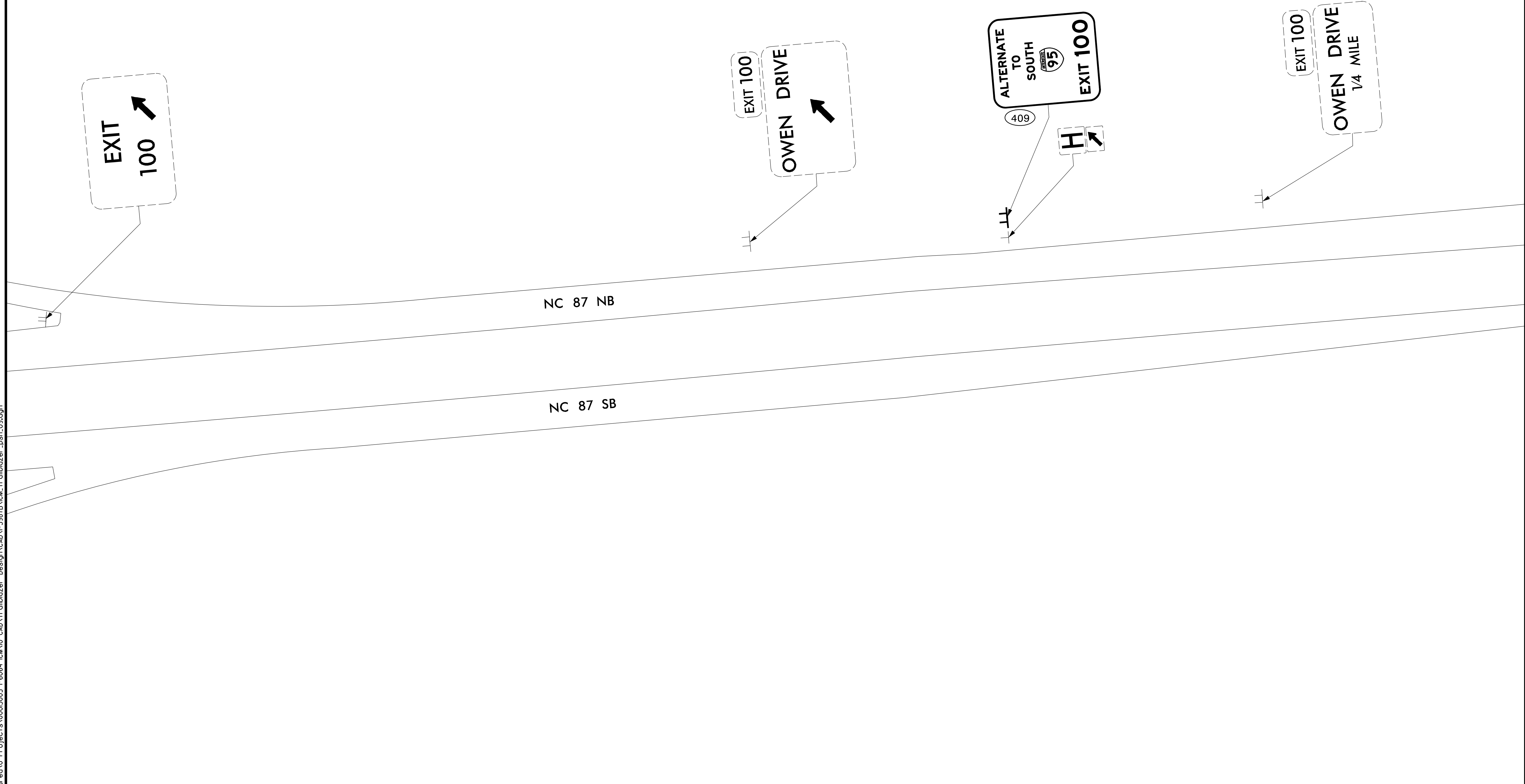
SEAL

ELIZABETH W. LYNCH
ENGINEER
11/2022

SIGNATURE DATE



- NOTES:
1. SIGN ERECTION, RELOCATE, SIGN TYPE D
 2. SIGN ERECTION, RELOCATE, SIGN TYPE E
 3. SIGN ERECTION, RELOCATE, SIGN TYPE F
 4. DISPOSAL OF SUPPORT, U-CHANNEL
 5. STOCKPILE SIGN D, E, OR F
 6. RETAIN ALL EXISTING SIGNS UNLESS OTHERWISE NOTED.



7/11/2022 \\Egnyr\drive\exult\engineering\Shored\0 Projects\0005005 I-6064 ICM10 CAD\Trailblazer Design\CAD\I-5987B\CM-Trailblazer_psh_09.dgn

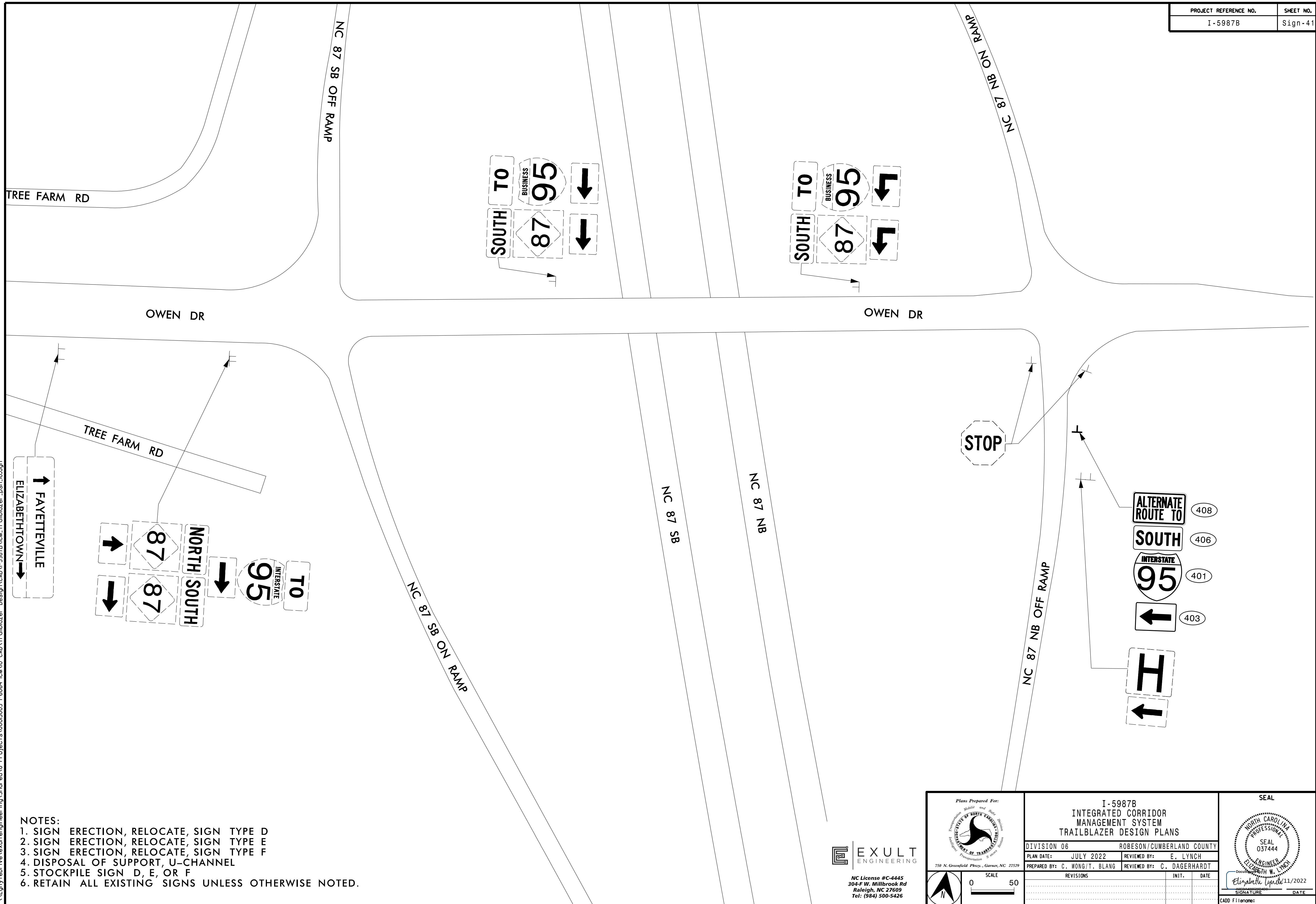
EXULT
ENGINEERING

NC License #C-4445
304-F W. Millbrook Rd
Raleigh, NC 27609
Tel: (984) 500-5426

	I-5987B INTEGRATED CORRIDOR MANAGEMENT SYSTEM TRAILBLAZER DESIGN PLANS		SEAL
	DIVISION 06 PLAN DATE: JULY 2022 PREPARED BY: C. WONG/T. BLANG	ROBESON/CUMBERLAND COUNTY REVIEWED BY: E. LYNCH REVIEWED BY: C. DAGERHARDT	

SCALE: 0 50

CADD Filename: _____



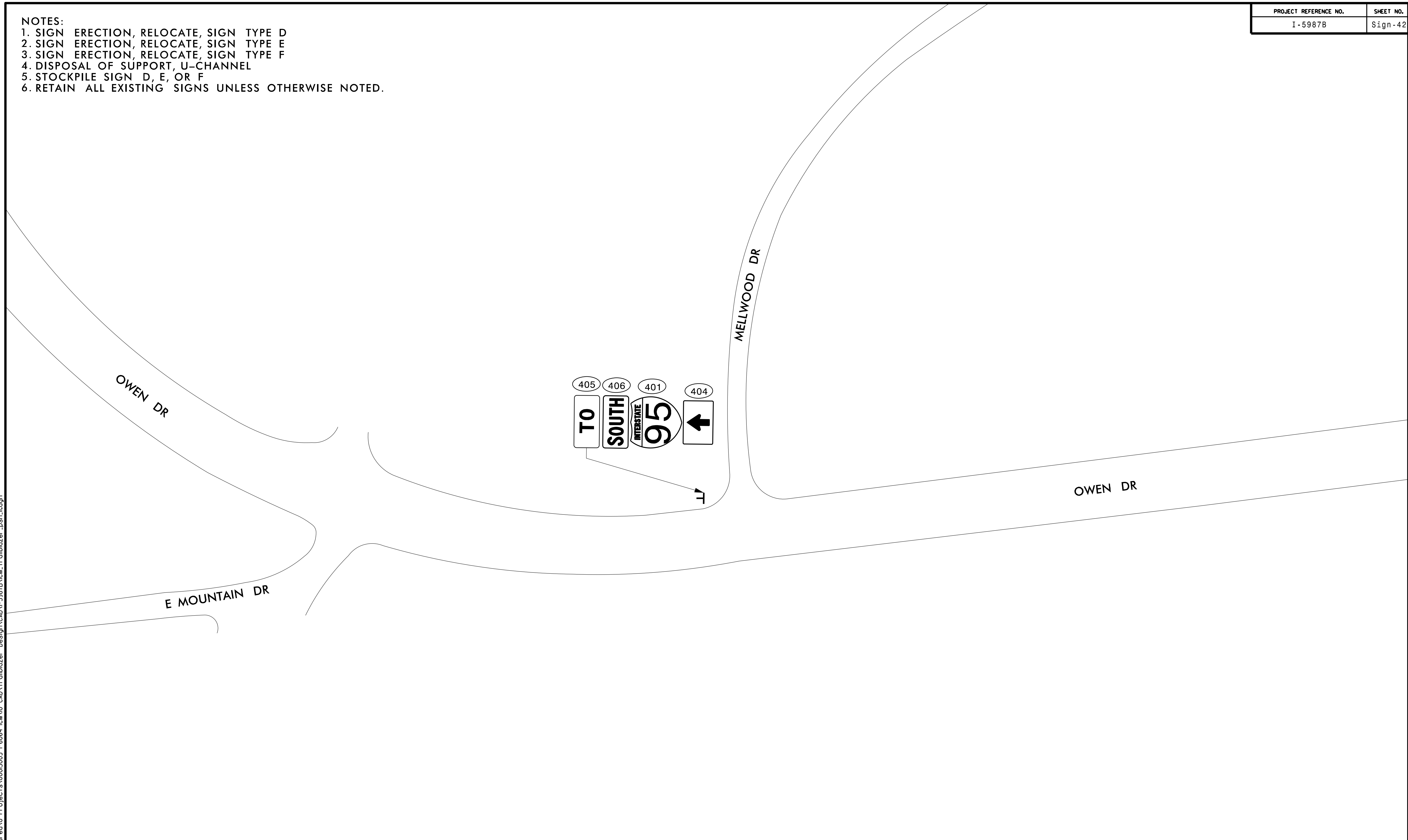
- NOTES:**
1. SIGN ERECTION, RELOCATE, SIGN TYPE D
 2. SIGN ERECTION, RELOCATE, SIGN TYPE E
 3. SIGN ERECTION, RELOCATE, SIGN TYPE F
 4. DISPOSAL OF SUPPORT, U-CHANNEL
 5. STOCKPILE SIGN D, E, OR F
 6. RETAIN ALL EXISTING SIGNS UNLESS OTHERWISE NOTED.

7/11/2022 \\Egnyr\01\ve\exult\engineering\Shored\0 Projects\0005005 I-6064 ICM10 CAD\Tralblazer Design\CAD\I-5987B\NCM-Tralblazer_psh_10.dgn

EXULT ENGINEERING
 750 N. Greenfield Pkwy., Garner, NC 27529
 NC License #C-4445
 304-F W. Millbrook Rd
 Raleigh, NC 27609
 Tel: (984) 500-5426

	I-5987B INTEGRATED CORRIDOR MANAGEMENT SYSTEM TRAILBLAZER DESIGN PLANS		SEAL
	DIVISION 06 PLAN DATE: JULY 2022 PREPARED BY: C. WONG/T. BLANG	ROBESON/CUMBERLAND COUNTY REVIEWED BY: E. LYNCH REVIEWED BY: C. DAGERHARDT	

- NOTES:
1. SIGN ERECTION, RELOCATE, SIGN TYPE D
 2. SIGN ERECTION, RELOCATE, SIGN TYPE E
 3. SIGN ERECTION, RELOCATE, SIGN TYPE F
 4. DISPOSAL OF SUPPORT, U-CHANNEL
 5. STOCKPILE SIGN D, E, OR F
 6. RETAIN ALL EXISTING SIGNS UNLESS OTHERWISE NOTED.



7/11/2022 \\Egnyr\drive\exult\engineering\Shored\0 Projects\0005005 I-6064 ICM10 CAD\Trailblazer Design\CAD\I-5987B\NCM-Trailblazer_psh.lldgn

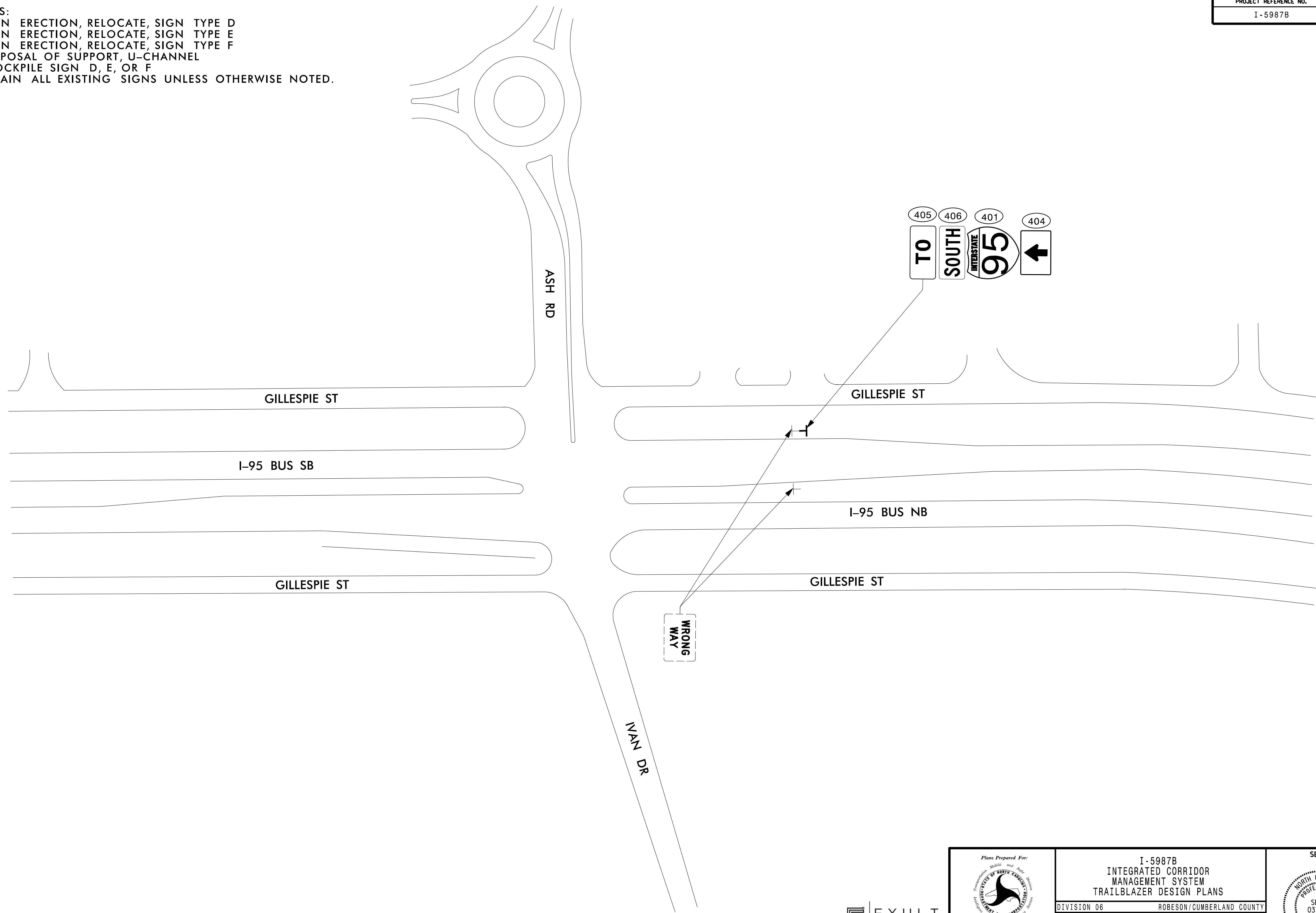
EXULT
ENGINEERING
750 N. Greenfield Pkwy., Garner, NC 27529
NC License #C-4445
304-F W. Millbrook Rd
Raleigh, NC 27609
Tel: (984) 500-5426

	Plans Prepared For: I-5987B INTEGRATED CORRIDOR MANAGEMENT SYSTEM TRAILBLAZER DESIGN PLANS		SEAL
	DIVISION 06 PLAN DATE: JULY 2022 PREPARED BY: C. WONG/T. BLANG	ROBESON/CUMBERLAND COUNTY REVIEWED BY: E. LYNCH REVIEWED BY: C. DAGERHARDT	

SCALE 0 50

CADD Filename:

- NOTES:
1. SIGN ERECTION, RELOCATE, SIGN TYPE D
 2. SIGN ERECTION, RELOCATE, SIGN TYPE E
 3. SIGN ERECTION, RELOCATE, SIGN TYPE F
 4. DISPOSAL OF SUPPORT, U-CHANNEL
 5. STOCKPILE SIGN D, E, OR F
 6. RETAIN ALL EXISTING SIGNS UNLESS OTHERWISE NOTED.



7/11/2022 \\Egnyt\drive\exult\engineering\Shored\0 Projects\0005005 I-6064 ICM10 CAD\Trailblazer Design\CAD\I-5987B\CM Trailblazer_psh.l2.dgn

EXULT
ENGINEERING

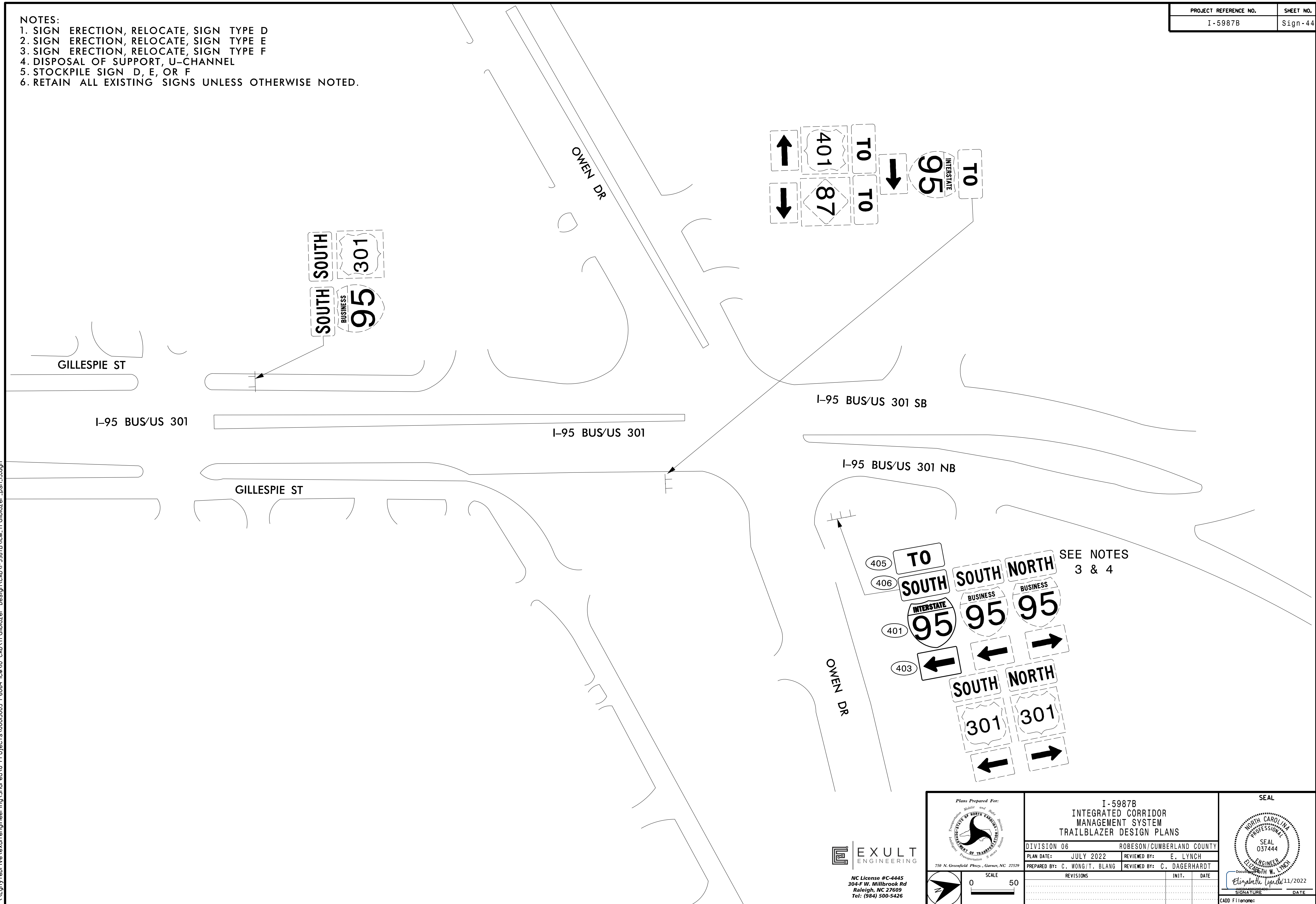
750 N. Greenfield Pkwy., Garner, NC 27529

NC License #C-4445
304-F W. Millbrook Rd
Raleigh, NC 27609
Tel: (984) 500-5426

	Plans Prepared For: I-5987B INTEGRATED CORRIDOR MANAGEMENT SYSTEM TRAILBLAZER DESIGN PLANS		SEAL
	DIVISION 06 PLAN DATE: JULY 2022 PREPARED BY: C. WONG/T. BLANG	ROBESON/CUMBERLAND COUNTY REVIEWED BY: E. LYNCH REVIEWED BY: C. DAGERHARDT	

CADD Filename: _____

- NOTES:
 1. SIGN ERECTION, RELOCATE, SIGN TYPE D
 2. SIGN ERECTION, RELOCATE, SIGN TYPE E
 3. SIGN ERECTION, RELOCATE, SIGN TYPE F
 4. DISPOSAL OF SUPPORT, U-CHANNEL
 5. STOCKPILE SIGN D, E, OR F
 6. RETAIN ALL EXISTING SIGNS UNLESS OTHERWISE NOTED.



7/11/2022 \\Egnyte\Drive\exult\engineering\Shored\0 Projects\0005005 I-6064 ICM10 CAD\Trailblazer Design\CAD\I-5987B\NCM-Trailblazer_psn_13.dgn

EXULT
ENGINEERING
 750 N. Greenfield Pkwy., Garner, NC 27529
 NC License #C-4445
 304-F W. Millbrook Rd
 Raleigh, NC 27609
 Tel: (984) 500-5426

	I-5987B INTEGRATED CORRIDOR MANAGEMENT SYSTEM TRAILBLAZER DESIGN PLANS		SEAL
	DIVISION 06 PLAN DATE: JULY 2022 PREPARED BY: C. WONG/T. BLANG	ROBESON/CUMBERLAND COUNTY REVIEWED BY: E. LYNCH REVIEWED BY: C. DAGERHARDT	
SCALE 0 50		REVISIONS INIT. DATE	SIGNATURE DATE

CADD Filename: