

NOTE: UTILIZE FABRIC INSERT INLET PROTECTION DEVICES IN LIEU OF ROCK INLET SEDIMENT TRAPS TYPE-C, AS DIRECTED, TO AVOID IMPOUNDMENT OF RUNOFF IN ROADWAY OPEN TO TRAFFIC.

NOTE: ALL EROSION CONTROL DEVICES SHOWN ARE LOCATED WITHIN EXISTING RW OR EASEMENT.

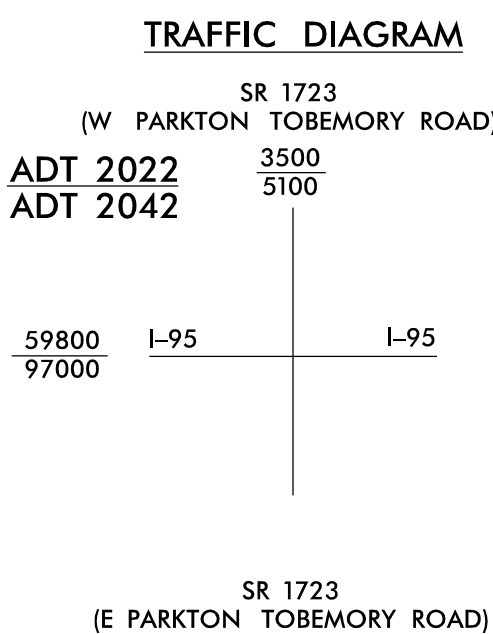
NOTE: CONTRACTOR SHALL PROVIDE INLET PROTECTION FOR PARTIALLY INSTALLED STORM DRAINS. THIS MEASURE SHOULD BE INSTALLED AT THE END OF EACH WORKING DAY.

FINAL EROSION CONTROL FOR CONSTRUCTION SHEET 36

NOTE: CONTRACTOR SHALL MAINTAIN ALL DEVICES AS PROJECT IS BROUGHT UP TO GRADE.

NOTE: INSTALL MATTING FOR EROSION CONTROL IN ALL PROPOSED DITCH LINES EXCEPT WHERE PERMANENT LINERS ARE SPECIFIED ON THE PLANS OR DIRECTED OTHERWISE BY THE ENGINEER.

NOTE: CONTRACTOR SHALL PROVIDE GROUND COVER ON EXPOSED SLOPES IN ACCORDANCE WITH THE "SOIL STABILIZATION TIMEFRAMES", SEE EC-3.



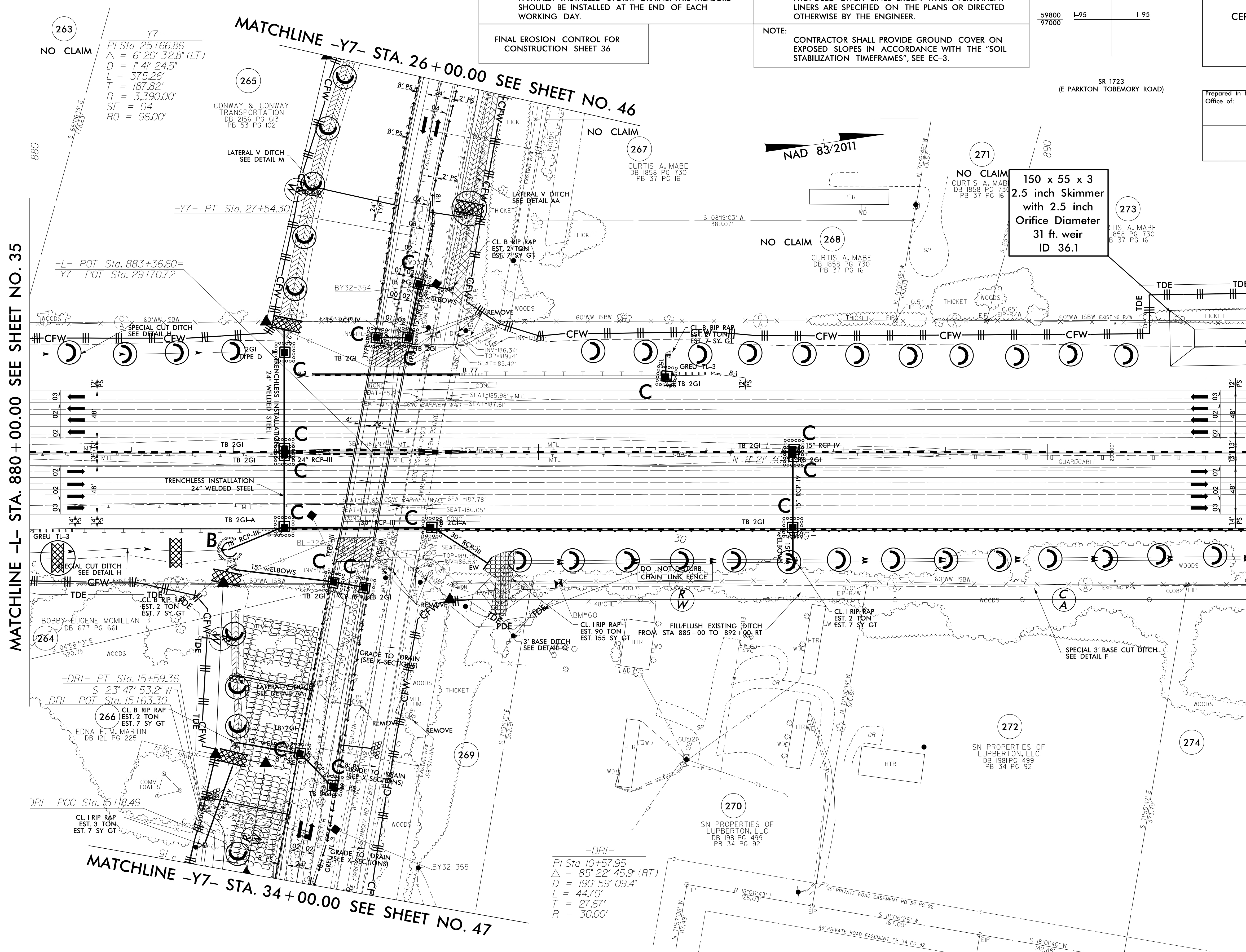
PROJECT REFERENCE NO.	SHEET NO.
1-5897B	EC-82/CONST.36
RW SHEET NO.	
ROADSIDE ENVIRONMENTAL PROJECT ENGINEER	
LEVEL III CERTIFIED BY: MATTHEW HARVEY, PE CERTIFICATION NUMBER: 3487 ISSUED: MARCH 15, 2022	

Prepared in the Office of:

M M
MOTT MACDONALD

PO Box 700
Fuquay-Varina, NC 27526
www.motmac.com/americas

1223 Jones Franklin Rd.
Raleigh, N.C. 27606
License No. 643177
Bus: 919 851 8977
Fax: 919 851 8107



MATCHLINE -L- STA. 880 + 00.00 SEE SHEET NO. 35

MATCHLINE -L- STA. 892 + 00.00 SEE SHEET NO. 37

MATCHLINE -Y7- STA. 34 + 00.00 SEE SHEET NO. 47

MATCHLINE -Y7- STA. 26 + 00.00 SEE SHEET NO. 46

263 NO CLAIM

-Y7-
PI Sta 25+66.86
 $\Delta = 6^{\circ} 20' 32.8" (LT)$
 $D = 1^{\circ} 41' 24.5"$
 $L = 375.26'$
 $T = 187.82'$
 $R = 3,390.00'$
 $SE = 04$
 $RO = 96.00'$

CONWAY & CONWAY TRANSPORTATION DB 2156 PG 613 PB 53 PG 102

267 NO CLAIM
CURTIS A. MABE DB 1858 PG 730 PB 37 PG 16

NAD 83/2011

150 x 55 x 3
2.5 inch Skimmer
with 2.5 inch Orifice Diameter
31 ft. weir
ID 36.1

273 NO CLAIM
CURTIS A. MABE DB 1858 PG 730 PB 37 PG 16

268 NO CLAIM
CURTIS A. MABE DB 1858 PG 730 PB 37 PG 16

264 NO CLAIM

-DRI- PT Sta. 15+59.36
S 23° 47' 53.2" W
-DRI- POT Sta. 15+63.30

266 NO CLAIM
EDNA F. M. MARTIN DB 121 PG 225

-DRI-

PI Sta 10+57.95
 $\Delta = 85^{\circ} 22' 45.9" (RT)$
 $D = 190^{\circ} 59' 09.4"$
 $L = 44.70'$
 $T = 27.67'$
 $R = 30.00'$

270 SN PROPERTIES OF LUPBERTON, LLC DB 1981 PG 499 PB 34 PG 92

272 SN PROPERTIES OF LUPBERTON, LLC DB 1981 PG 499 PB 34 PG 92

274

5/14/99

NAD 83/2011

PROJECT REFERENCE NO.	SHEET NO.
1-5897B	EC-83/CONST.37
RW SHEET NO.	
ROADSIDE ENVIRONMENTAL PROJECT ENGINEER	

LEVEL III CERTIFIED BY:
 MATTHEW HARVEY, PE
 CERTIFICATION NUMBER: 3487
 ISSUED: MARCH 15, 2022

Prepared in the Office of:

M M
 MOTT MACDONALD

PO Box 700
 Fuquay-Varina, NC 27526
 www.mottmac.com/americas

WETHERILL ENGINEERING

1223 Jones Franklin Rd.
 Raleigh, N.C. 27606
 License No. 643177
 Bus: 919 851 8977
 Fax: 919 851 8107

NOTE: ALL EROSION CONTROL DEVICES SHOWN ARE LOCATED WITHIN EXISTING RW OR EASEMENT.

NOTE: CONTRACTOR SHALL MAINTAIN ALL DEVICES AS PROJECT IS BROUGHT UP TO GRADE.

NOTE: CONTRACTOR SHALL PROVIDE INLET PROTECTION FOR PARTIALLY INSTALLED STORM DRAINS. THIS MEASURE SHOULD BE INSTALLED AT THE END OF EACH WORKING DAY.

NOTE: INSTALL MATTING FOR EROSION CONTROL IN ALL PROPOSED DITCH LINES EXCEPT WHERE PERMANENT LINERS ARE SPECIFIED ON THE PLANS OR DIRECTED OTHERWISE BY THE ENGINEER.

FINAL EROSION CONTROL FOR CONSTRUCTION SHEET 37

NOTE: CONTRACTOR SHALL PROVIDE GROUND COVER ON EXPOSED SLOPES IN ACCORDANCE WITH THE "SOIL STABILIZATION TIMEFRAMES", SEE EC-3.

NOTE: UTILIZE FABRIC INSERT INLET PROTECTION DEVICES IN LIEU OF ROCK INLET SEDIMENT TRAPS TYPE-C, AS DIRECTED, TO AVOID IMPOUNDMENT OF RUNOFF IN ROADWAY OPEN TO TRAFFIC.

273
 CURTIS A. MABE
 DB 1858 PG 730
 PB 37 PG 16

150 x 55 x 3
 2.5 inch Skimmer
 with 2.5 inch
 Orifice Diameter
 31 ft. weir
 ID 36.1

3 inch Skimmer
 with 2.625 inch
 Orifice Diameter
 23 ft. weir with
 4.5 ft. weir height
 ID 37.2
 (See Earthen Dam
 with Skimmer Detail)

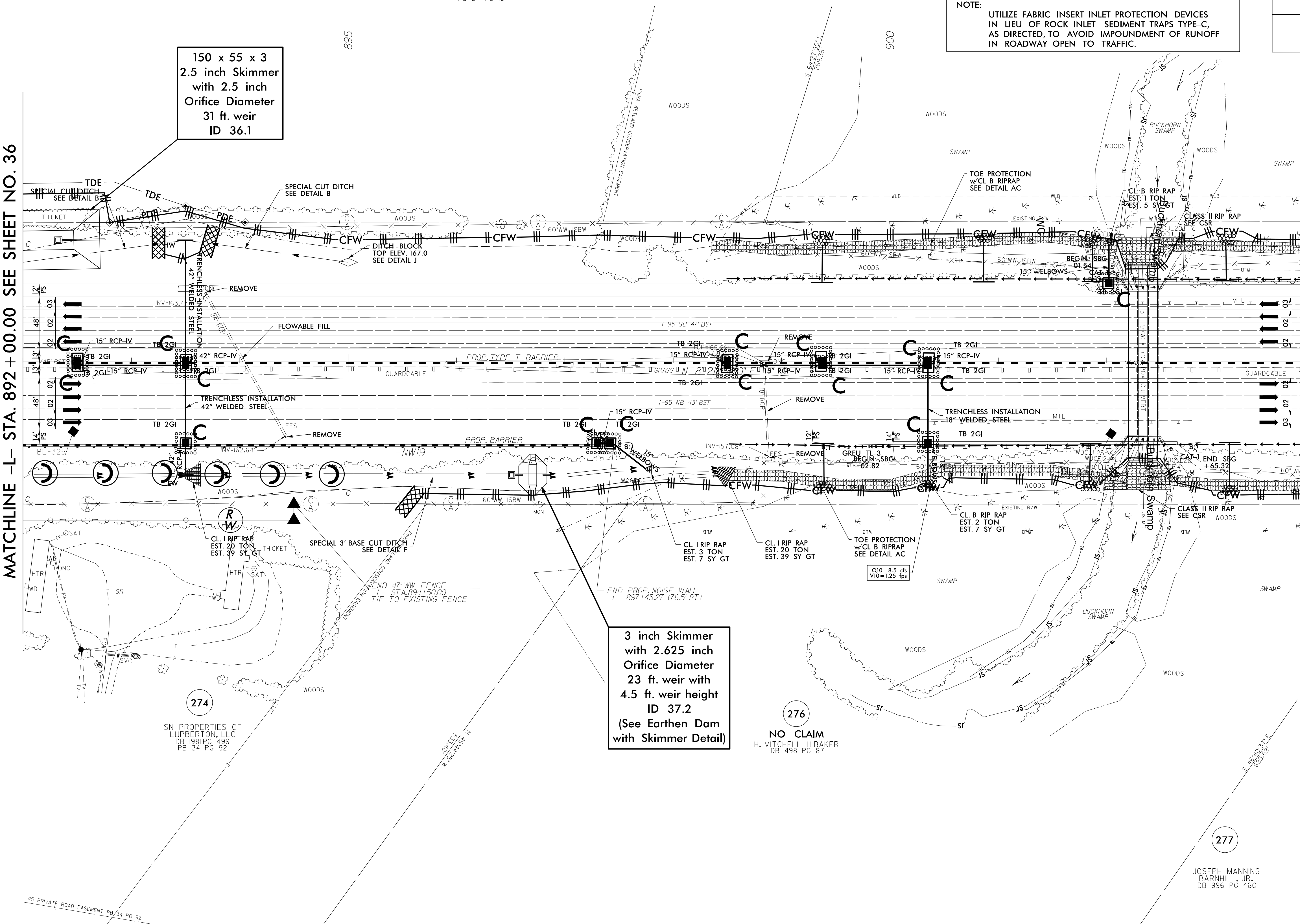
274
 SN PROPERTIES OF
 LUPBERTON, LLC
 DB 1981 PG 499
 PB 34 PG 92

276
 NO CLAIM
 H. MITCHELL III BAKER
 DB 498 PG 87

277

MATCHLINE -L- STA. 892 + 00.00 SEE SHEET NO. 36

MATCHLINE -L- STA. 904 + 00 SEE SHEET NO. 38

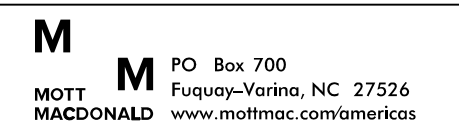



3/14/2022
 Erosion_Control_15987B_EC_PSH_37_f.mxd
 Mott MacDonald

45 PRIVATE ROAD EASEMENT PB/34 PG 92

5/14/2022
 Erosion_Control_01_15987B_EC_PSH_38_f.mxd
 Mott MacDonald

NAD 83/2011

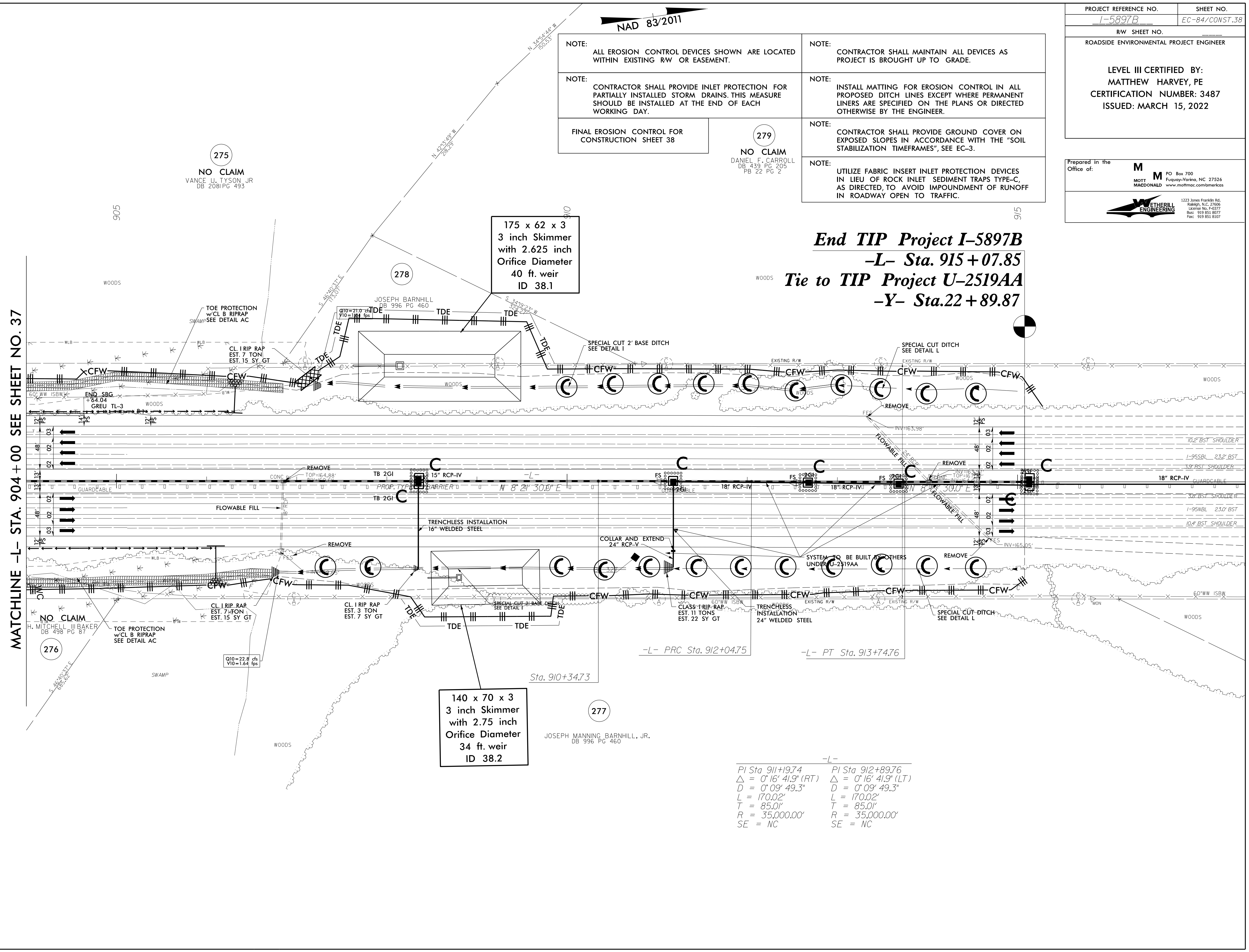
PROJECT REFERENCE NO. <i>I-5897B</i>	SHEET NO. EC-84/CONST.38
RW SHEET NO.	
ROADSIDE ENVIRONMENTAL PROJECT ENGINEER	
LEVEL III CERTIFIED BY: MATTHEW HARVEY, PE CERTIFICATION NUMBER: 3487 ISSUED: MARCH 15, 2022	
Prepared in the Office of:	 MOTT MACDONALD PO Box 700 Fuquay-Varina, NC 27526 www.mottmac.com/amerikas
 1223 Jones Franklin Rd. Raleigh, N.C. 27606 License No. 44377 Bus: 919 851 8877 Fax: 919 851 8107	

- NOTE: ALL EROSION CONTROL DEVICES SHOWN ARE LOCATED WITHIN EXISTING RW OR EASEMENT.
- NOTE: CONTRACTOR SHALL MAINTAIN ALL DEVICES AS PROJECT IS BROUGHT UP TO GRADE.
- NOTE: CONTRACTOR SHALL PROVIDE INLET PROTECTION FOR PARTIALLY INSTALLED STORM DRAINS. THIS MEASURE SHOULD BE INSTALLED AT THE END OF EACH WORKING DAY.
- NOTE: INSTALL MATTING FOR EROSION CONTROL IN ALL PROPOSED DITCH LINES EXCEPT WHERE PERMANENT LINERS ARE SPECIFIED ON THE PLANS OR DIRECTED OTHERWISE BY THE ENGINEER.
- FINAL EROSION CONTROL FOR CONSTRUCTION SHEET 38
- NOTE: CONTRACTOR SHALL PROVIDE GROUND COVER ON EXPOSED SLOPES IN ACCORDANCE WITH THE "SOIL STABILIZATION TIMEFRAMES", SEE EC-3.
- NOTE: UTILIZE FABRIC INSERT INLET PROTECTION DEVICES IN LIEU OF ROCK INLET SEDIMENT TRAPS TYPE-C, AS DIRECTED, TO AVOID IMPOUNDMENT OF RUNOFF IN ROADWAY OPEN TO TRAFFIC.

279
 NO CLAIM
 DANIEL F. CARROLL
 DB 439 PG 205
 PB 22 PG 2

MATCHLINE -L- STA. 904 + 00 SEE SHEET NO. 37

End TIP Project I-5897B
-L- Sta. 915 + 07.85
Tie to TIP Project U-2519AA
-Y- Sta. 22 + 89.87



175 x 62 x 3
 3 inch Skimmer
 with 2.625 inch
 Orifice Diameter
 40 ft. weir
 ID 38.1

140 x 70 x 3
 3 inch Skimmer
 with 2.75 inch
 Orifice Diameter
 34 ft. weir
 ID 38.2

-L-

PI Sta 911+19.74	PI Sta 912+89.76
Δ = 0' 16' 41.9" (RT)	Δ = 0' 16' 41.9" (LT)
D = 0' 09' 49.3"	D = 0' 09' 49.3"
L = 170.02'	L = 170.02'
T = 85.01'	T = 85.01'
R = 35,000.00'	R = 35,000.00'
SE = NC	SE = NC

3/14/2022
 Erosion_Control_01_15987B_EC_PSH_38_f.mxd
 Mott MacDonald

5/14/2022

R:\Erosion\3/14/2022\15987b-EC.psh85_final.dgn
Mott MacDonald

NOTE: ALL EROSION CONTROL DEVICES SHOWN ARE LOCATED WITHIN EXISTING RW OR EASEMENT.

NOTE: CONTRACTOR SHALL PROVIDE INLET PROTECTION FOR PARTIALLY INSTALLED STORM DRAINS. THIS MEASURE SHOULD BE INSTALLED AT THE END OF EACH WORKING DAY.

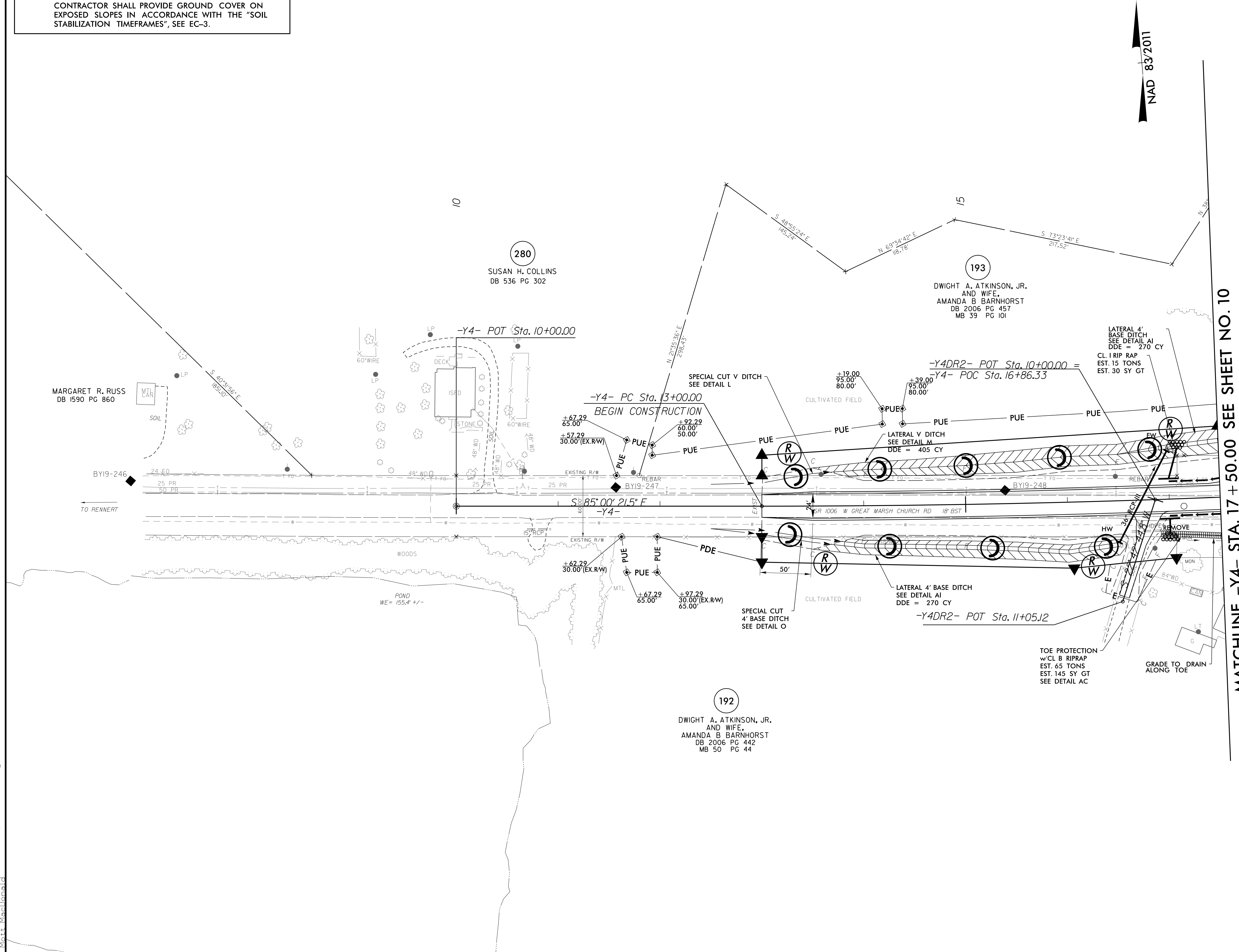
NOTE: CONTRACTOR SHALL PROVIDE GROUND COVER ON EXPOSED SLOPES IN ACCORDANCE WITH THE "SOIL STABILIZATION TIMEFRAMES", SEE EC-3.

NOTE: CONTRACTOR SHALL MAINTAIN ALL DEVICES AS PROJECT IS BROUGHT UP TO GRADE.

NOTE: INSTALL MATTING FOR EROSION CONTROL IN ALL PROPOSED DITCH LINES EXCEPT WHERE PERMANENT LINERS ARE SPECIFIED ON THE PLANS OR DIRECTED OTHERWISE BY THE ENGINEER.

PROJECT REFERENCE NO. 1-5987B	SHEET NO. EC-85/CONST.39
RW SHEET NO. ROADSIDE ENVIRONMENTAL PROJECT ENGINEER	
LEVEL III CERTIFIED BY: ELENI M. RIGGS, PE CERTIFICATION NUMBER: 3056 ISSUED: MARCH 15, 2022	
Prepared in the Office of:	M MOTT MACDONALD 7621 Purfoy Rd, Suite 115 Fuquay-Varina, NC 27526 www.mottmac.com/america

FINAL EROSION CONTROL FOR CONSTRUCTION SHEET 39



MATCHLINE -Y4- STA. 17 + 50.00 SEE SHEET NO. 10

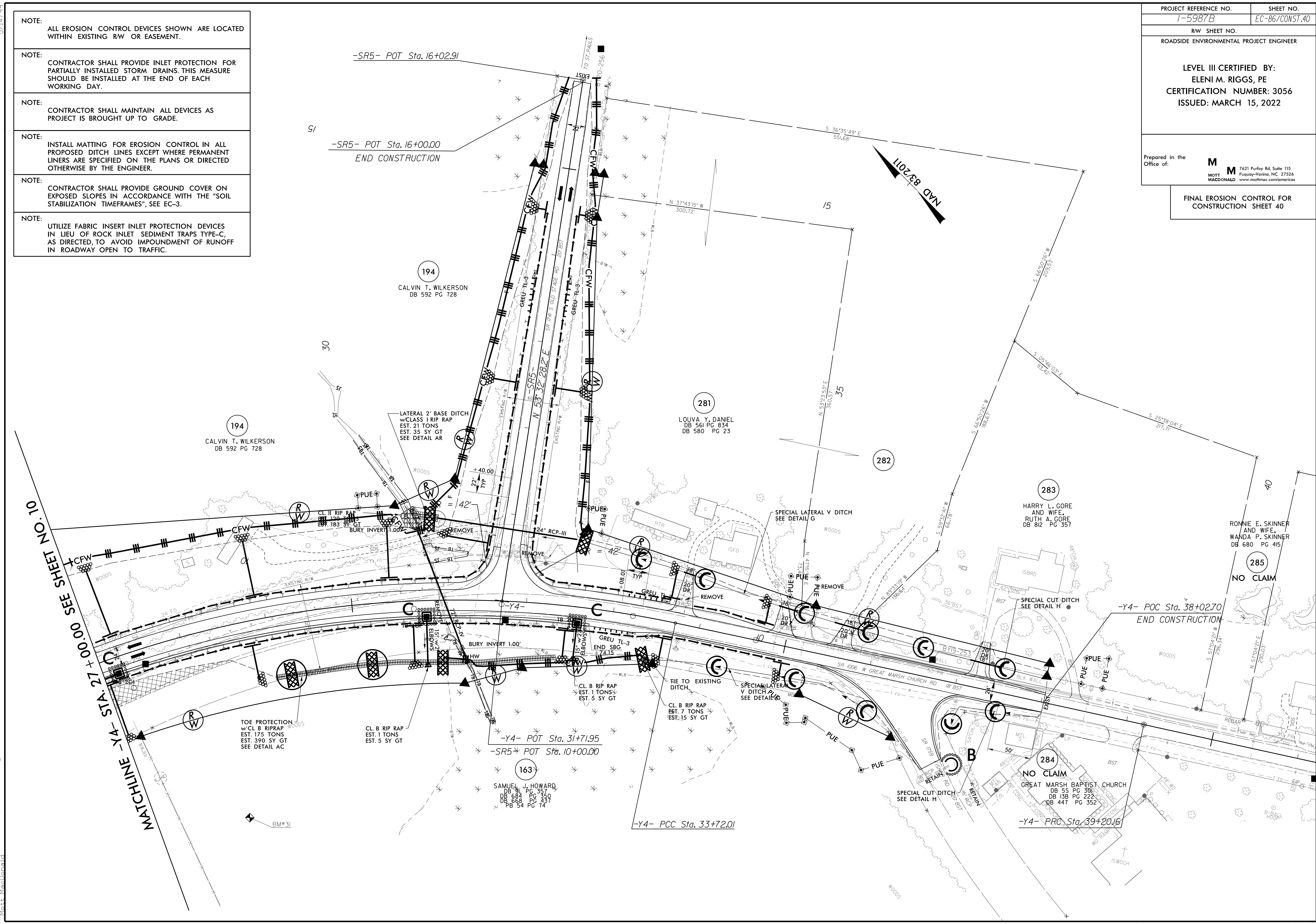
LEVEL III CERTIFIED BY:
 ELENI M. RIGGS, PE
 CERTIFICATION NUMBER: 3056
 ISSUED: MARCH 15, 2022

Prepared in the Office of:
M MOTT MACDONALD
 7621 Purfoy Rd, Suite 115
 Fuquay-Varina, NC 27526
 www.mottmac.com/americas

FINAL EROSION CONTROL FOR
 CONSTRUCTION SHEET 40

- NOTE: ALL EROSION CONTROL DEVICES SHOWN ARE LOCATED WITHIN EXISTING RW OR EASEMENT.
- NOTE: CONTRACTOR SHALL PROVIDE INLET PROTECTION FOR PARTIALLY INSTALLED STORM DRAINS. THIS MEASURE SHOULD BE INSTALLED AT THE END OF EACH WORKING DAY.
- NOTE: CONTRACTOR SHALL MAINTAIN ALL DEVICES AS PROJECT IS BROUGHT UP TO GRADE.
- NOTE: INSTALL MATTING FOR EROSION CONTROL IN ALL PROPOSED DITCH LINES EXCEPT WHERE PERMANENT LINERS ARE SPECIFIED ON THE PLANS OR DIRECTED OTHERWISE BY THE ENGINEER.
- NOTE: CONTRACTOR SHALL PROVIDE GROUND COVER ON EXPOSED SLOPES IN ACCORDANCE WITH THE "SOIL STABILIZATION TIMEFRAMES", SEE EC-3.
- NOTE: UTILIZE FABRIC INSERT INLET PROTECTION DEVICES IN LIEU OF ROCK INLET SEDIMENT TRAPS TYPE-C, AS DIRECTED, TO AVOID IMPOUNDMENT OF RUNOFF IN ROADWAY OPEN TO TRAFFIC.

5/14/2022 3:14:2022 R:\Erosion\1-5987b-EC.psh866.final.dgn Mott MacDonald



LEVEL III CERTIFIED BY:
 ELENI M. RIGGS, PE
 CERTIFICATION NUMBER: 3056
 ISSUED: MARCH 15, 2022

Prepared in the Office of: **M** MOTT MACDONALD
 7621 Purfoy Rd, Suite 115
 Fuquay-Varina, NC 27526
 www.mottmac.com/americas

FINAL EROSION CONTROL FOR CONSTRUCTION SHEET 41

NOTE: ALL EROSION CONTROL DEVICES SHOWN ARE LOCATED WITHIN EXISTING RW OR EASEMENT.

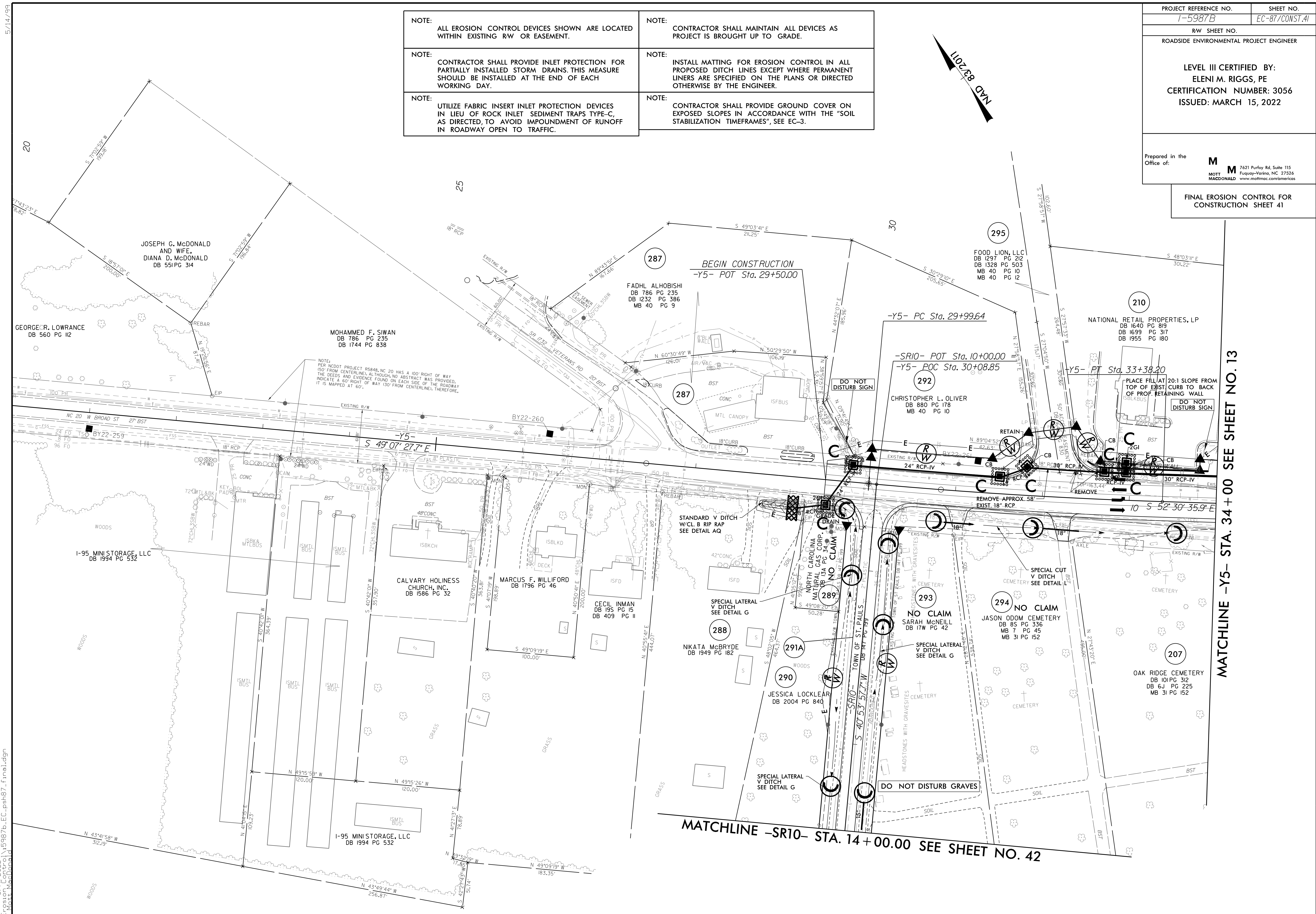
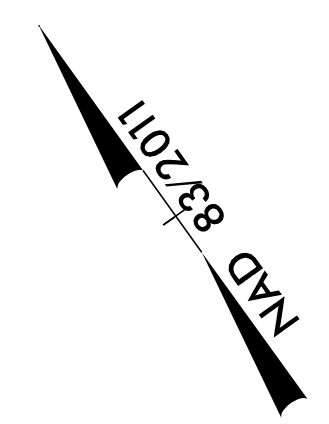
NOTE: CONTRACTOR SHALL PROVIDE INLET PROTECTION FOR PARTIALLY INSTALLED STORM DRAINS. THIS MEASURE SHOULD BE INSTALLED AT THE END OF EACH WORKING DAY.

NOTE: UTILIZE FABRIC INSERT INLET PROTECTION DEVICES IN LIEU OF ROCK INLET SEDIMENT TRAPS TYPE-C, AS DIRECTED, TO AVOID IMPOUNDMENT OF RUNOFF IN ROADWAY OPEN TO TRAFFIC.

NOTE: CONTRACTOR SHALL MAINTAIN ALL DEVICES AS PROJECT IS BROUGHT UP TO GRADE.

NOTE: INSTALL MATTING FOR EROSION CONTROL IN ALL PROPOSED DITCH LINES EXCEPT WHERE PERMANENT LINERS ARE SPECIFIED ON THE PLANS OR DIRECTED OTHERWISE BY THE ENGINEER.

NOTE: CONTRACTOR SHALL PROVIDE GROUND COVER ON EXPOSED SLOPES IN ACCORDANCE WITH THE "SOIL STABILIZATION TIMEFRAMES", SEE EC-3.



MATCHLINE -Y5- STA. 34 + 00 SEE SHEET NO. 13

MATCHLINE -SR10- STA. 14 + 00.00 SEE SHEET NO. 42

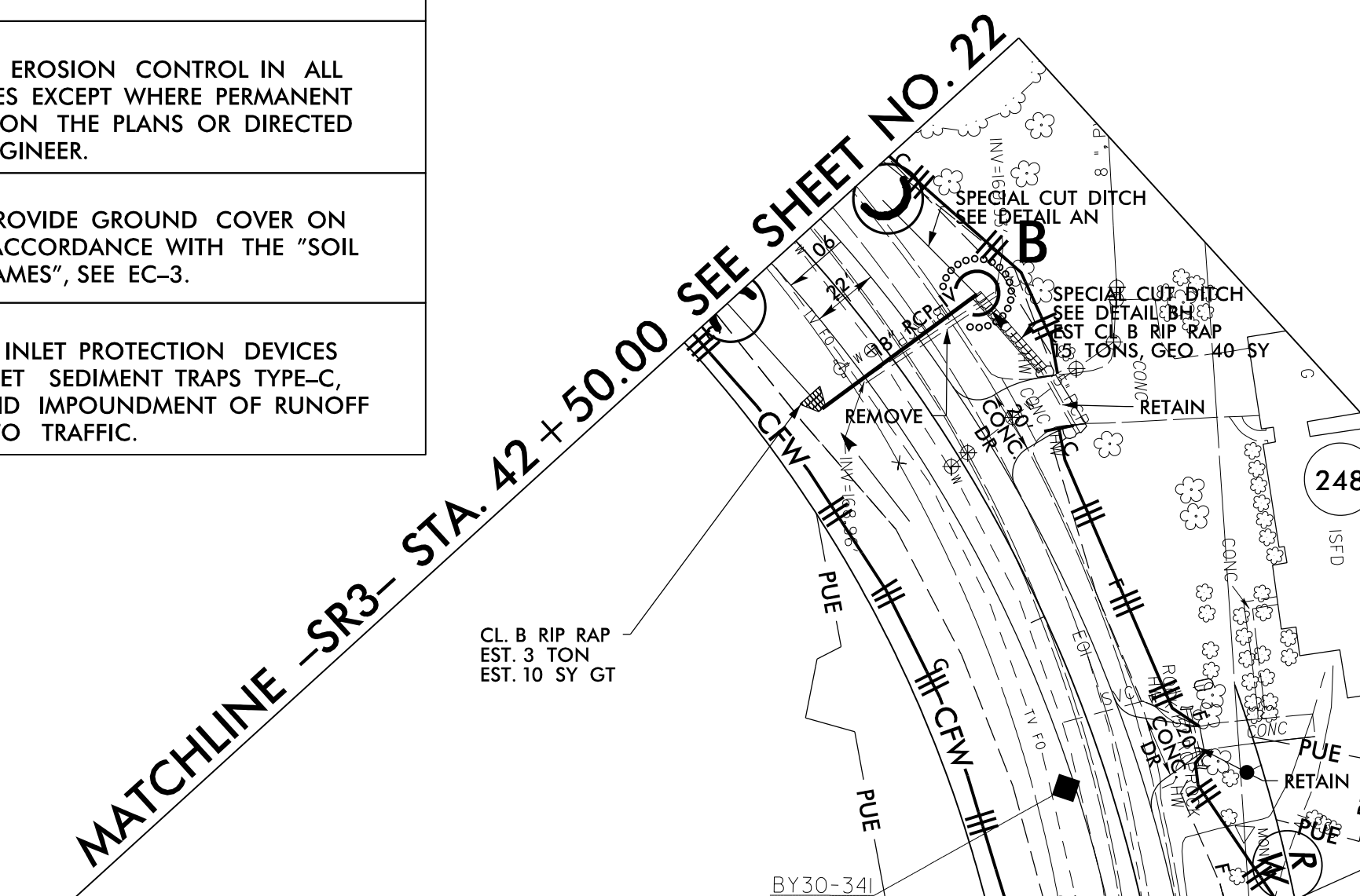
3/14/2022 R:\Erosion\15987b-EC.psh87_final.dgn Mott MacDonald

PROJECT REFERENCE NO.	SHEET NO.
1-5987B	EC-89/CONST.43
RW SHEET NO.	
ROADSIDE ENVIRONMENTAL PROJECT ENGINEER	
LEVEL III CERTIFIED BY: MATTHEW HARVEY, PE CERTIFICATION NUMBER: 3487 ISSUED: MARCH 15, 2022	

ETHERILL ENGINEERING
 1223 Jones Franklin Rd.
 Raleigh, N.C. 27606
 License No. F-0377
 Bus: 919 851 8077
 Fax: 919 851 8107

TRANSPORTATION PLANNING/DESIGN - BRIDGE/STRUCTURE DESIGN
 CIVIL/SITE DESIGN - GIS/GPS - CONSTRUCTION OBSERVATION

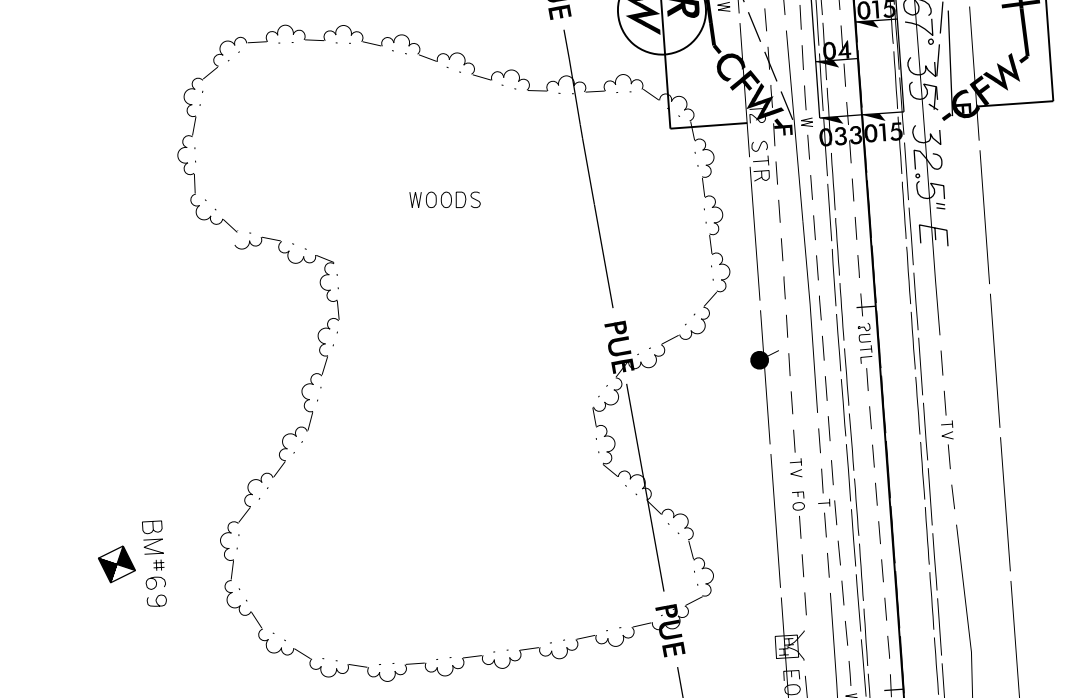
- | | |
|---|--|
| NOTE:
ALL EROSION CONTROL DEVICES SHOWN ARE LOCATED WITHIN EXISTING RW OR EASEMENT. | NOTE:
CONTRACTOR SHALL MAINTAIN ALL DEVICES AS PROJECT IS BROUGHT UP TO GRADE. |
| NOTE:
CONTRACTOR SHALL PROVIDE INLET PROTECTION FOR PARTIALLY INSTALLED STORM DRAINS. THIS MEASURE SHOULD BE INSTALLED AT THE END OF EACH WORKING DAY. | NOTE:
INSTALL MATTING FOR EROSION CONTROL IN ALL PROPOSED DITCH LINES EXCEPT WHERE PERMANENT LINERS ARE SPECIFIED ON THE PLANS OR DIRECTED OTHERWISE BY THE ENGINEER. |
| FINAL EROSION CONTROL FOR CONSTRUCTION SHEET 43 | NOTE:
CONTRACTOR SHALL PROVIDE GROUND COVER ON EXPOSED SLOPES IN ACCORDANCE WITH THE "SOIL STABILIZATION TIMEFRAMES", SEE EC-3. |
| | NOTE:
UTILIZE FABRIC INSERT INLET PROTECTION DEVICES IN LIEU OF ROCK INLET SEDIMENT TRAPS TYPE-C, AS DIRECTED, TO AVOID IMPOUNDMENT OF RUNOFF IN ROADWAY OPEN TO TRAFFIC. |



-SR3- PT Sta.45+73.53

242
 MARY ANN REGAN
 DB 507 PG 150
 PB 6 PG 95

-SR3-
 PI STA. 43+01.14
 $\Delta = 81^{\circ} 52' 36.4" (RT)$
 $D = 11^{\circ} 48' 48.8"$
 $L = 693.07'$
 $T = 420.69'$
 $R = 485.00'$
 $SE = 0.06$
 $RO = SEE PLANS$



253
 ANGUS MCCORMICK &
 CAROLYN MCCORMICK
 DB 1390 PG 723

-SR3- POT Sta.50+27.16

250
 CAROL S. MCBRYDE & JERRY MCBRYDE
 DB 1292 PG 138
 PB 6 PG 95

251
 FAYE E. MCRAINEY REAVES
 DB 519 PG 355
 PB 26 PG 23

254
 BRENDA JOYCE & JIMMY MAULDIN
 DB 874 PG 528

-SR3- POT Sta. 49+05.00
END CONSTRUCTION



REVISIONS

5/14/99

PROJECT REFERENCE NO. 1-5987B SHEET NO. EC-90/CONST.44

RW SHEET NO. ROADSIDE ENVIRONMENTAL PROJECT ENGINEER

LEVEL III CERTIFIED BY: MATTHEW HARVEY, PE CERTIFICATION NUMBER: 3487 ISSUED: MARCH 15, 2022

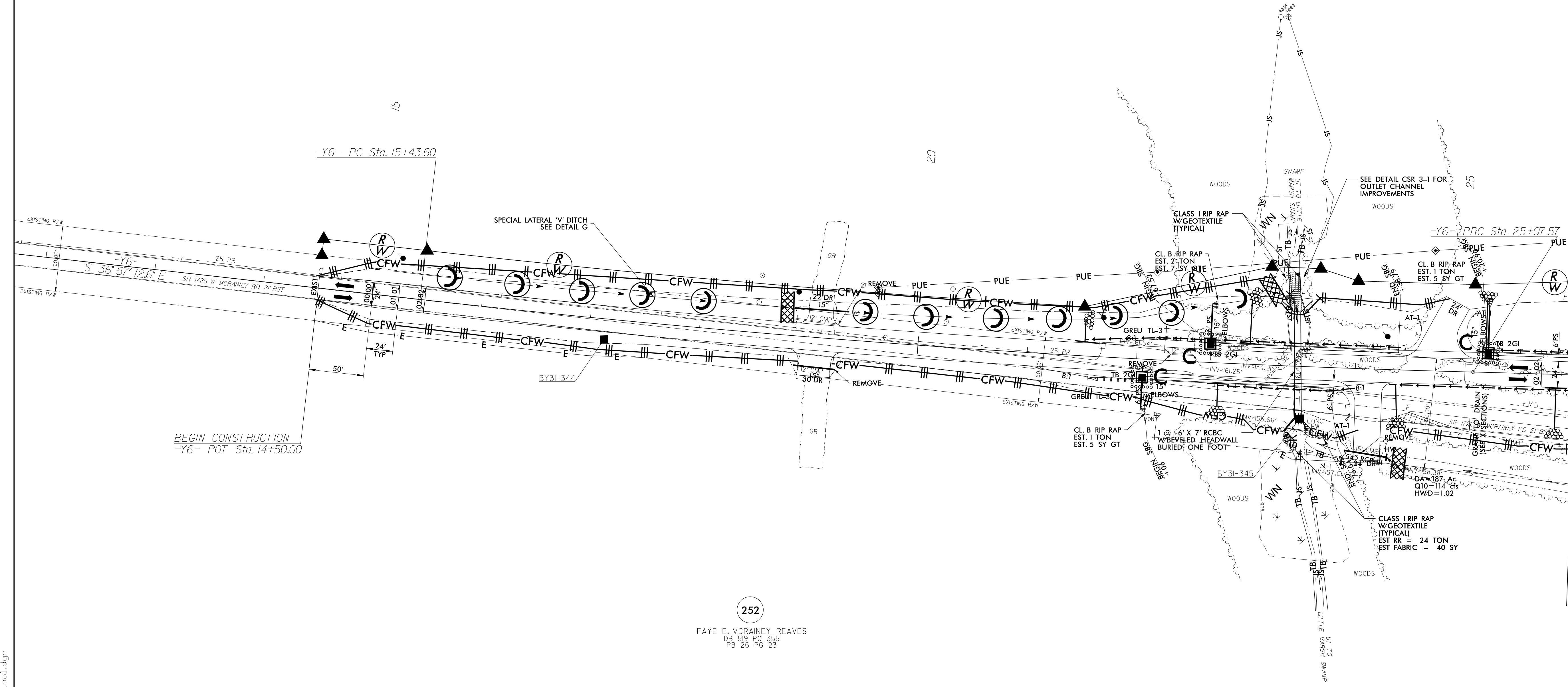
Prepared in the Office of: MOTT MACDONALD 1223 Jones Franklin Rd. Raleigh, N.C. 27606 License No. 143777 Bui: 919 851 8077 Fax: 919 851 9107

NOTE: ALL EROSION CONTROL DEVICES SHOWN ARE LOCATED WITHIN EXISTING RW OR EASEMENT.
NOTE: CONTRACTOR SHALL MAINTAIN ALL DEVICES AS PROJECT IS BROUGHT UP TO GRADE.
NOTE: CONTRACTOR SHALL PROVIDE INLET PROTECTION FOR PARTIALLY INSTALLED STORM DRAINS THIS MEASURE SHOULD BE INSTALLED AT THE END OF EACH WORKING DAY.
NOTE: INSTALL MATTING FOR EROSION CONTROL IN ALL PROPOSED DITCH LINES EXCEPT WHERE PERMANENT LINERS ARE SPECIFIED ON THE PLANS OR DIRECTED OTHERWISE BY THE ENGINEER.
FINAL EROSION CONTROL FOR CONSTRUCTION SHEET 44
NOTE: CONTRACTOR SHALL PROVIDE GROUND COVER ON EXPOSED SLOPES IN ACCORDANCE WITH THE "SOIL STABILIZATION TIMEFRAMES", SEE EC-3.
NOTE: UTILIZE FABRIC INSERT INLET PROTECTION DEVICES IN LIEU OF ROCK INLET SEDIMENT TRAPS TYPE-C, AS DIRECTED, TO AVOID IMPOUNDMENT OF RUNOFF IN ROADWAY OPEN TO TRAFFIC.



256 FAYE E. MCRAINEY REAVES DB 519 PG 355 PB 26 PG 23

252 FAYE E. MCRAINEY REAVES DB 519 PG 355 PB 26 PG 23



MATCHLINE -Y6- STA. 26 + 00.00 SEE SHEET NO. 25

-Y6-
PI Sta 20+25.89 PI Sta 26+92.85
Delta = 4' 58" 32.9" (LT) Delta = 1' 54" 45.5" (RT)
D = 0' 30" 58.2" D = 0' 30" 58.2"
L = 963.97' L = 370.54'
T = 482.29' T = 185.29'
R = 11,100.00' R = 11,100.00'
SE = NC SE = NC

3/14/2022 E:\egston\Control\15987b\EC_PSH_44_f.mxd.dgn Mott MacDonald

5/14/2022

3/14/2022
E:\Erosion_Control\15987b_EC_PSH_46_f.mel.dgn
Matt Macdonald

PROJECT REFERENCE NO.	SHEET NO.
1-5897B	EC-92/CONST.46
RW SHEET NO.	
ROADSIDE ENVIRONMENTAL PROJECT ENGINEER	
LEVEL III CERTIFIED BY: MATTHEW HARVEY, PE CERTIFICATION NUMBER: 3487 ISSUED: MARCH 15, 2022	

Prepared in the Office of:

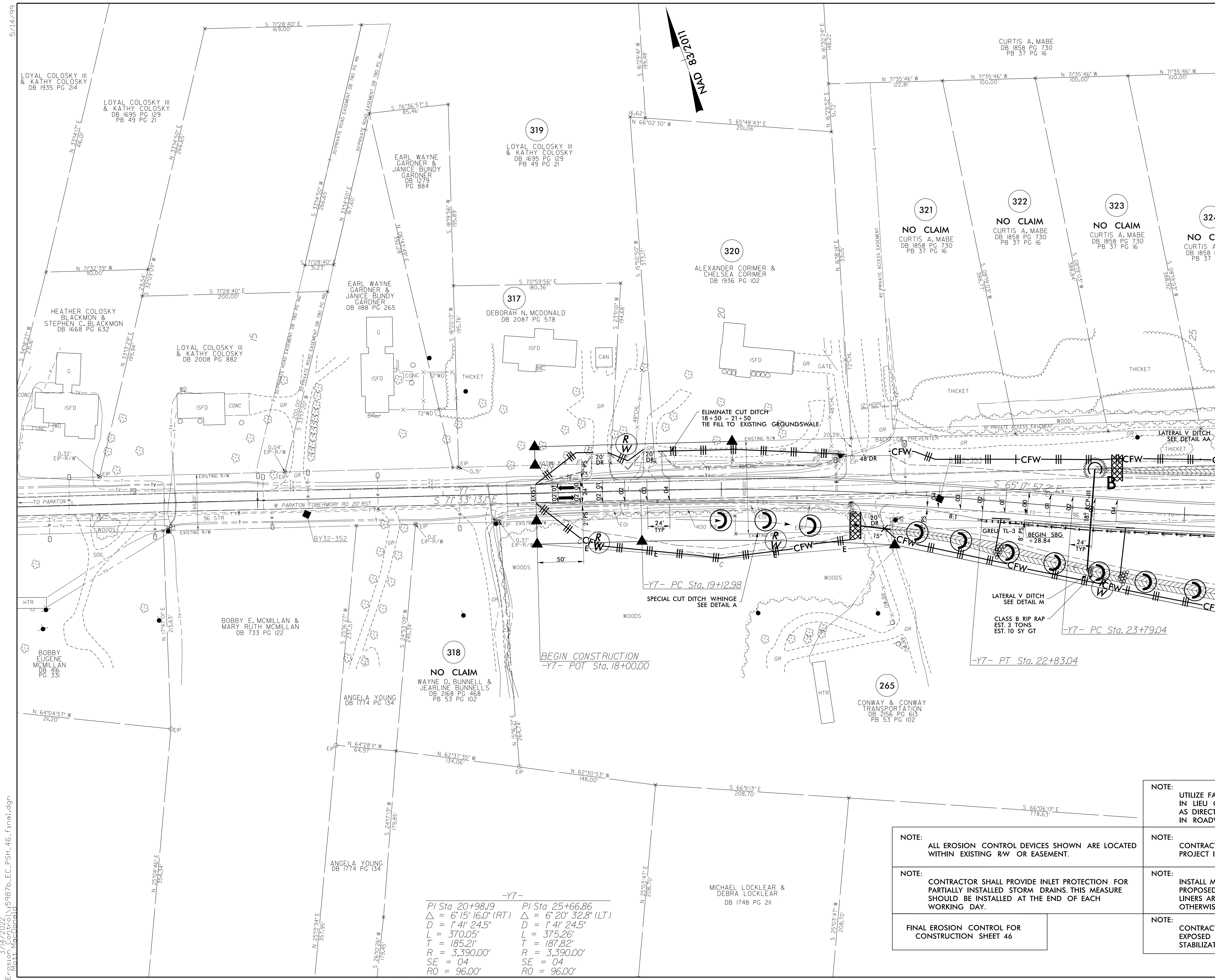
M M
MOTT
MACDONALD

PO Box 700
Fuquay-Varina, NC 27526
www.mottmac.com/americas

ETHERILL
ENGINEERING

1223 Jones Franklin Rd.
Raleigh, N.C. 27606
License No. 14377
Bus: 919.851.8077
Fax: 919.851.9107

MATCHLINE -Y7- STA. 26 + 00.00 SEE SHEET NO. 36



-Y7-

PI Sta 20+98.19	PI Sta 25+66.86
Δ = 6' 15" 16.0" (RT)	Δ = 6' 20" 32.8" (LT)
D = 1' 4" 24.5"	D = 1' 4" 24.5"
L = 370.05'	L = 375.26'
T = 185.21'	T = 187.82'
R = 3,390.00'	R = 3,390.00'
SE = 04	SE = 04
RO = 96.00'	RO = 96.00'

- NOTE: ALL EROSION CONTROL DEVICES SHOWN ARE LOCATED WITHIN EXISTING RW OR EASEMENT.
- NOTE: CONTRACTOR SHALL MAINTAIN ALL DEVICES AS PROJECT IS BROUGHT UP TO GRADE.
- NOTE: CONTRACTOR SHALL PROVIDE INLET PROTECTION FOR PARTIALLY INSTALLED STORM DRAINS. THIS MEASURE SHOULD BE INSTALLED AT THE END OF EACH WORKING DAY.
- NOTE: INSTALL MATTING FOR EROSION CONTROL IN ALL PROPOSED DITCH LINES EXCEPT WHERE PERMANENT LINERS ARE SPECIFIED ON THE PLANS OR DIRECTED OTHERWISE BY THE ENGINEER.
- NOTE: CONTRACTOR SHALL PROVIDE GROUND COVER ON EXPOSED SLOPES IN ACCORDANCE WITH THE "SOIL STABILIZATION TIMEFRAMES", SEE EC-3.

- NOTE: UTILIZE FABRIC INSERT INLET PROTECTION DEVICES IN LIEU OF ROCK INLET SEDIMENT TRAPS-C, AS DIRECTED, TO AVOID IMPOUNDMENT OF RUNOFF IN ROADWAY OPEN TO TRAFFIC.
- NOTE: CONTRACTOR SHALL PROVIDE INLET PROTECTION FOR PARTIALLY INSTALLED STORM DRAINS. THIS MEASURE SHOULD BE INSTALLED AT THE END OF EACH WORKING DAY.
- NOTE: CONTRACTOR SHALL PROVIDE GROUND COVER ON EXPOSED SLOPES IN ACCORDANCE WITH THE "SOIL STABILIZATION TIMEFRAMES", SEE EC-3.

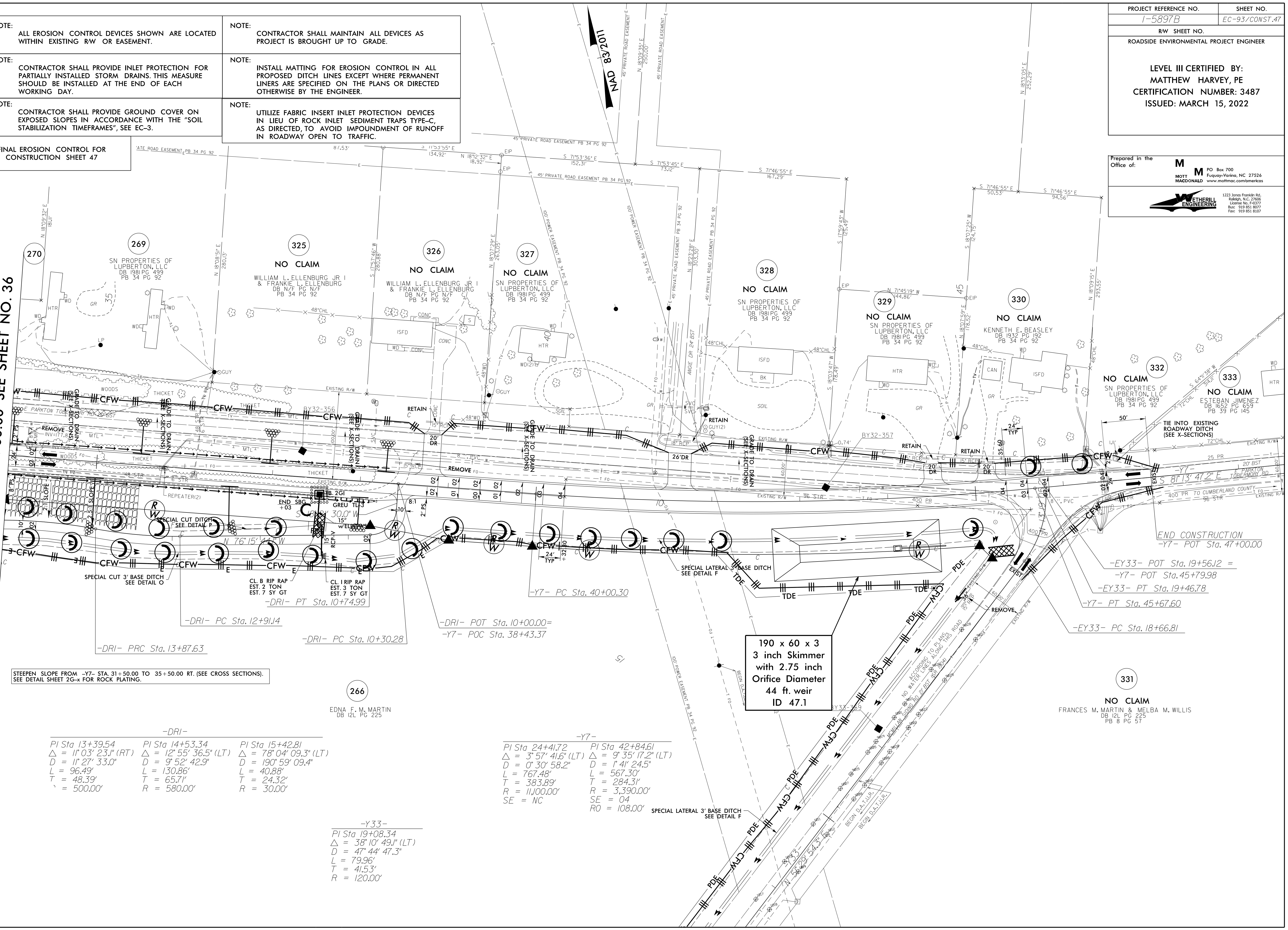
LEVEL III CERTIFIED BY: MATTHEW HARVEY, PE CERTIFICATION NUMBER: 3487 ISSUED: MARCH 15, 2022

Prepared in the Office of: MOTT MACDONALD MOTT MACDONALD ENGINEERING

- NOTE: ALL EROSION CONTROL DEVICES SHOWN ARE LOCATED WITHIN EXISTING RW OR EASEMENT.
NOTE: CONTRACTOR SHALL MAINTAIN ALL DEVICES AS PROJECT IS BROUGHT UP TO GRADE.
NOTE: CONTRACTOR SHALL PROVIDE INLET PROTECTION FOR PARTIALLY INSTALLED STORM DRAINS. THIS MEASURE SHOULD BE INSTALLED AT THE END OF EACH WORKING DAY.
NOTE: INSTALL MATTING FOR EROSION CONTROL IN ALL PROPOSED DITCH LINES EXCEPT WHERE PERMANENT LINERS ARE SPECIFIED ON THE PLANS OR DIRECTED OTHERWISE BY THE ENGINEER.
NOTE: CONTRACTOR SHALL PROVIDE GROUND COVER ON EXPOSED SLOPES IN ACCORDANCE WITH THE "SOIL STABILIZATION TIMEFRAMES", SEE EC-3.
NOTE: UTILIZE FABRIC INSERT INLET PROTECTION DEVICES IN LIEU OF ROCK INLET SEDIMENT TRAPS TYPE-C, AS DIRECTED, TO AVOID IMPOUNDMENT OF RUNOFF IN ROADWAY OPEN TO TRAFFIC.

FINAL EROSION CONTROL FOR CONSTRUCTION SHEET 47

MATCHLINE -Y7- STA. 34 + 00.00 SEE SHEET NO. 36



STEEPEN SLOPE FROM -Y7- STA. 31+50.00 TO 35+50.00 RT. (SEE CROSS SECTIONS). SEE DETAIL SHEET 2C-X FOR ROCK PLATING.

Table with 3 columns for DRI stationing: PI Sta 13+39.54, PI Sta 14+53.34, PI Sta 15+42.81. Includes values for Delta, D, L, T, R.

Table with 2 columns for -Y7- stationing: PI Sta 24+41.72, PI Sta 42+84.61. Includes values for Delta, D, L, T, R, SE, RO.

Table for -Y33- stationing: PI Sta 19+08.34. Includes values for Delta, D, L, T, R.

190 x 60 x 3 3 inch Skimmer with 2.75 inch Orifice Diameter 44 ft. weir ID 47.1